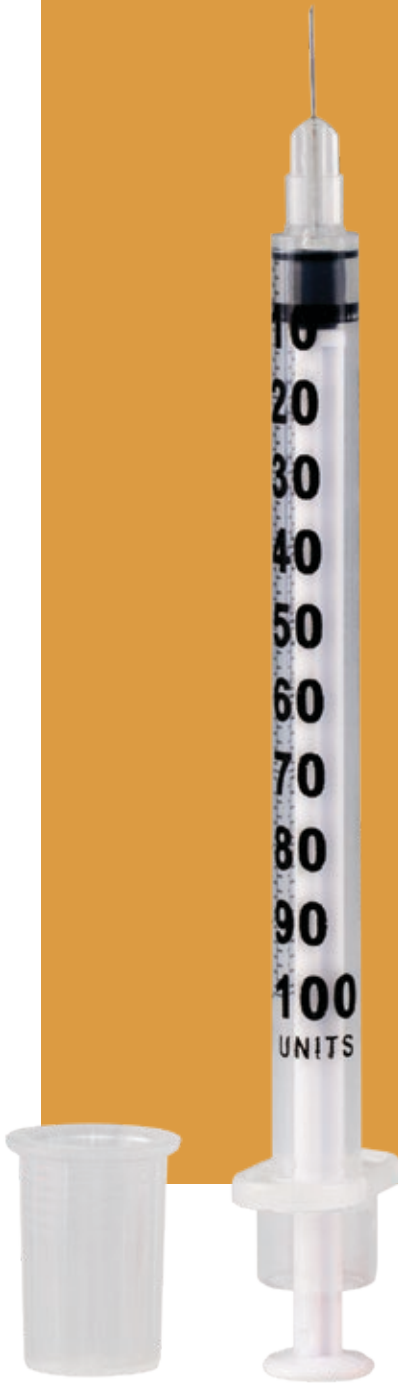


# SOL-M™ Insulin Syringe



The SOL-M™ Insulin Syringe with Fixed Needle is used to inject insulin into the body.

The fixed needle ensures low waste space and better accuracy compared to conventional syringes and needles.

## Two different packaging options:

- Sterile, PE Bag of 10 units  
Mainly for Consumer use
- Sterile, individual blister  
Mainly for Hospital use

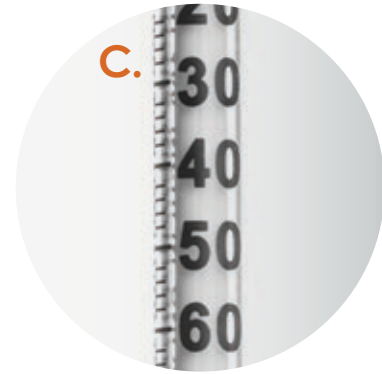
## Shorter needles

Shorter needle can avoid the risk of injecting into muscle and less painful with minimum puncture





# SOL-M™ Insulin Syringe



- A. Three-bevelled, lubricated needle** - Makes injections more comfortable.
- B. Low dead space** - Minimizes residual medication wastage.
- C. Transparent barrel with bold scale** - Markings make it easier to see and measure the syringe content.

## SOL-M™ Insulin Syringe with Fixed Needle (U-100 Insulin Only), PE Bag

| Reference number | Capacity | Gauge size | Outer diameter (mm) | Length  |        | Shelf Box / Shipping Case (pcs) |
|------------------|----------|------------|---------------------|---------|--------|---------------------------------|
| 163311654B       | 0.3 ml   | 31G        | 0.25 mm             | 6 mm    | 15/64" | 100/1000                        |
| 1633051B         | 0.3 ml   | 30G        | 0.3 mm              | 8 mm    | 5/16"  | 100/1000                        |
| 1632912B         | 0.3 ml   | 29G        | 0.33 mm             | 12.5 mm | 1/2"   | 100/1000                        |
| 165311564B       | 0.5 ml   | 31G        | 0.25 mm             | 6 mm    | 15/64" | 100/1000                        |
| 1653151B         | 0.5 ml   | 31G        | 0.25 mm             | 8 mm    | 5/16"  | 100/1000                        |
| 1653051B         | 0.5 ml   | 30G        | 0.3 mm              | 8 mm    | 5/16"  | 100/1000                        |
| 1652912B         | 0.5 ml   | 29G        | 0.33 mm             | 12.5 mm | 1/2"   | 100/1000                        |
| 161311564B       | 1 ml     | 31G        | 0.25 mm             | 6 mm    | 15/64" | 100/1000                        |
| 1613151B         | 1 ml     | 31G        | 0.25 mm             | 8 mm    | 5/16"  | 100/1000                        |
| 1613051B         | 1 ml     | 30G        | 0.3 mm              | 8 mm    | 5/16"  | 100/1000                        |
| 1612912B         | 1 ml     | 29G        | 0.33 mm             | 12.5 mm | 1/2"   | 100/1000                        |

## SOL-M™ Insulin Syringe with Fixed Needle (U-100 Insulin Only), Individual Blister

| Reference number | Capacity | Gauge size | Outer diameter (mm) | Length |        | Shelf Box / Shipping Case (pcs) |
|------------------|----------|------------|---------------------|--------|--------|---------------------------------|
| 165311564        | 0.5 ml   | 31G        | 0.25 mm             | 6 mm   | 15/64" | 100/800                         |
| 1653151          | 0.5 ml   | 31G        | 0.25 mm             | 8 mm   | 5/16"  | 100/800                         |
| 161311564        | 1 ml     | 31G        | 0.25 mm             | 6 mm   | 15/64" | 100/800                         |
| 1613151          | 1 ml     | 31G        | 0.25 mm             | 8 mm   | 5/16"  | 100/800                         |

### For more information, please contact:

Sol-Millennium Europe Sp. z o.o.  
 Twarda 18, PL-00105 Warsaw, Poland  
 Tel: +48 22 202 67 23, e-mail: info.EU@sol-m.com

[sol-m.com](http://sol-m.com)

EMA-IN-133-0920