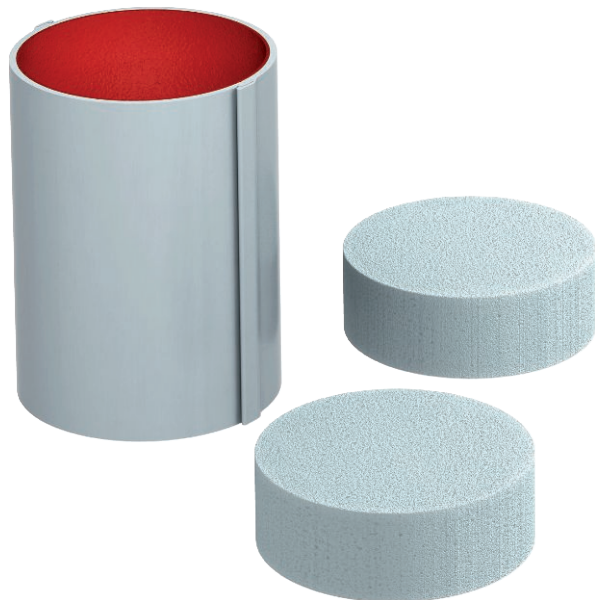


Technical data sheet

PYROCOMB® Intube pipe shell, Ø 120 mm

Item no. 7204300



Internally coated pipe shells with click lock. The inner space can be fitted with cables and electrical installation pipes completely. CE-labelled, European approved construction product according to ETA-13/0904 and German general type approval. Fire resistance up to 120 minutes.

Closing with 2 foam plugs included in the delivery. The surface seal is created with PYROCOAT® ASX coating.

In some applications, the use of metallic tightening straps is prescribed to secure the pipe shells in light-duty partitions. Details can be found in the mounting instructions/approval.

CE

PVC Polyvinylchloride

Master data

Item no.	7204300
Type	CTS 12150
Description 1	Pipe shell
Description 2	internally coated
Dimension	Ø107x150mm
Colour	Grey
Material	Polyvinylchloride
Material symbol	PVC
Smallest sales unit	1,00 Piece
Weight	35,20 kg/100 pc.

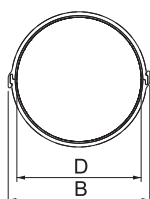
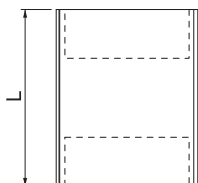
Technical data sheet

PYROCOMB® Intube pipe shell, Ø 120 mm

Item no. 7204300



Technical data



Length	150,00 mm
Dimension B	116,40 mm
Dimension D	107,00 mm
Dimension L	150,00 mm
Fire protection version	Assembly insulation
Diameter	116,40 mm
Shape	Round
For opening	125,00 Ø mm
Accessories required	<input type="checkbox"/>