

MIXERS

MIX-AS

FLOATING DOWNDRAFT MIXER



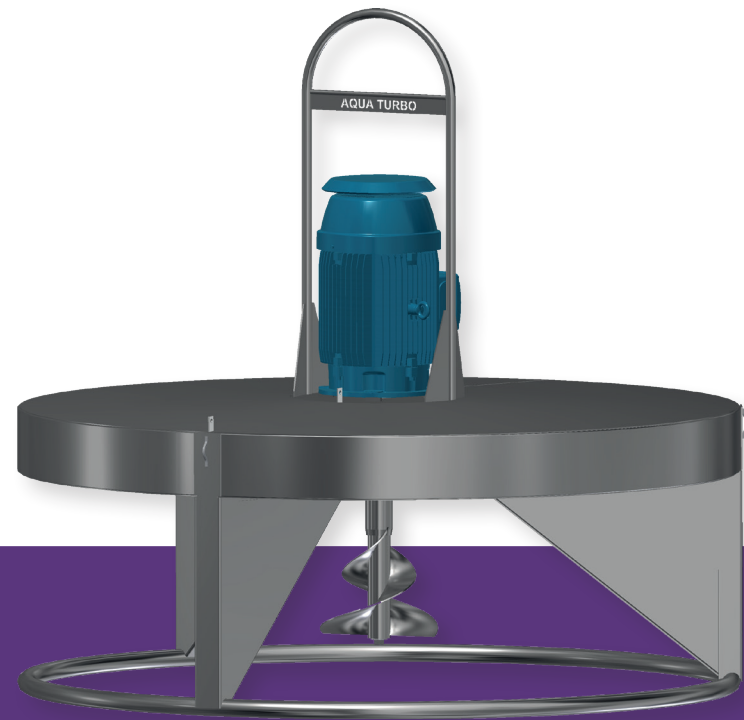
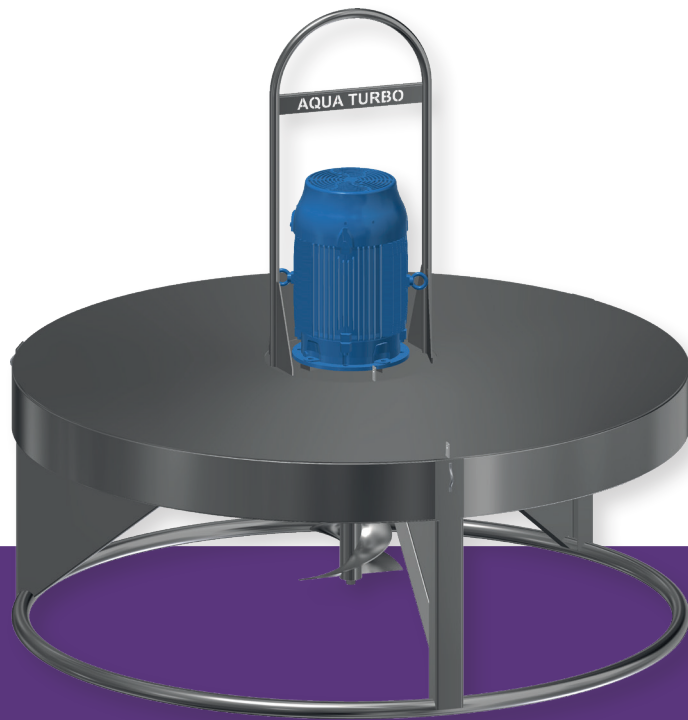
SFA
enviro

PROVIDE INTENSIVE RADIAL,
SUB-SURFACE MIXING PATTERN
FOR VARIOUS PROCESS
REQUIREMENTS
ADAPTABLE TO MOST TANK
CONFIGURATIONS

Aquaturbo

MAIN CHARACTERISTICS

Open, two-bladed helical impeller providing intensive radial, sub-surface mixing pattern with minimal surface disturbance and extremely low power to volume performance



ADVANTAGES

GENERAL-PURPOSE MIXER ADAPTABLE TO MOST TANK CONFIGURATIONS PLUS APPLICATIONS AND EASILY POSITIONED FOR VARIOUS PROCESS REQUIREMENTS

SIMPLE, ROBUST, AND RELIABLE

NON-CLOGGING, NO SHEERING ACTION IMPELLER

VIRTUALLY ZERO SURFACE TURBULENCE AND NO AEROSOLS

NO O₂ TRANSFER AND EASY TO INSTALL AND REMOVE

COMPONENTS

- Turbulent 3D radial mixing pattern
- 1.5 - 55kW Motor Range
- 4 + 6-Pole Speeds, Direct Drive Motor
- AISI 304/316 or other SS

OPTIONS

- Float Mounted only
- Vertical Operation only
- One x Surface Drive
- Fixed or Variable Water Levels



A STEP AHEAD IN WATER TECHNOLOGY

sfa-enviro.com

 [@sfa_enviro](https://twitter.com/sfa_enviro)

