



General Specifications

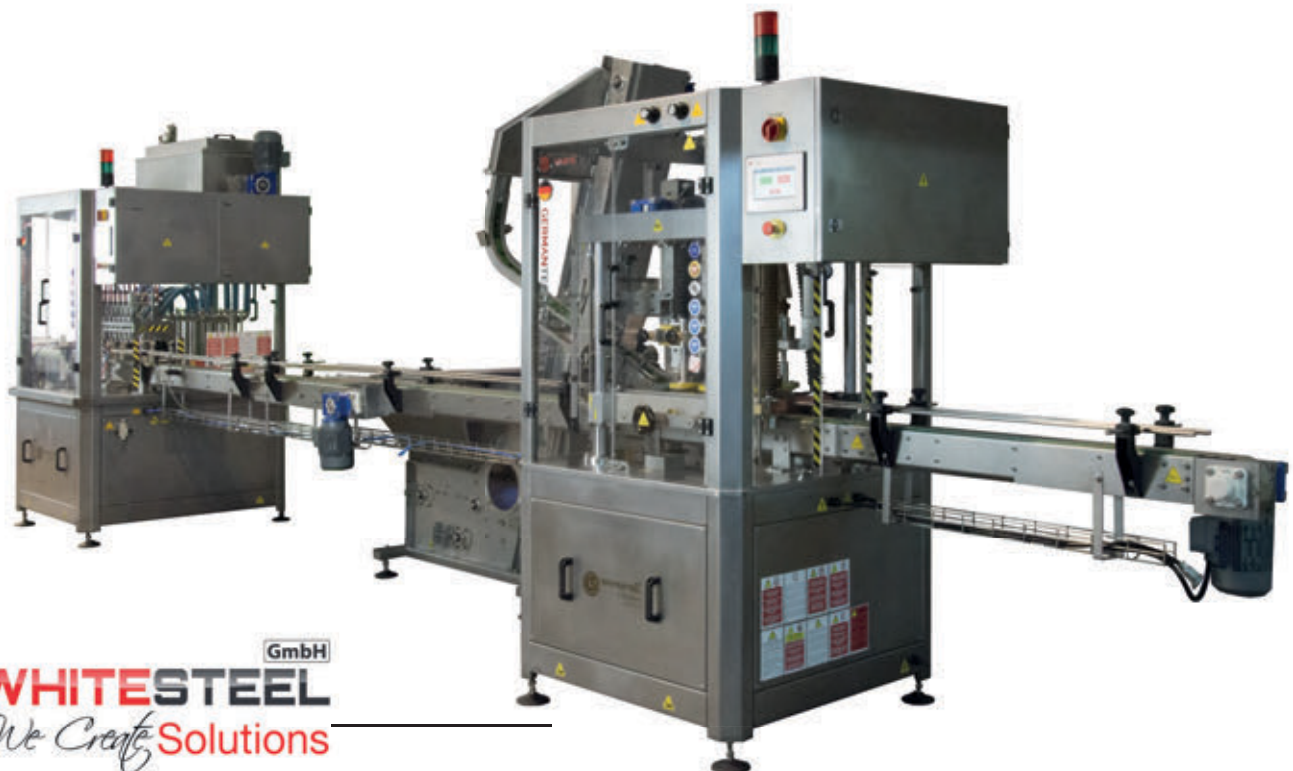
Full automatic 6 heads filling and capping jars machine.

The Machine consists of :

- 1) Buffer tank (80L)
- 2) Automatic Liquid Filling Machine 6 Filling Nozzles
- 3) caps feeder (elevator)
- 4) Automatic cap placing, capping function.
- 5) Automatic Capping Machine
- 6) Conveyor connected with the body of Machines
- 7) Control Panel

Technical Specifications :

- 1- Type of metal used that will not contact the product: ss.304
- 2- Type of metal used that will not contact the product: ss.304
- 3- Power specification : 380V. / 50Hz. / (4-6) kw
- 4- Capacity specification 2000 B/hr.
- 5- Compressed air specification : 6Bar.
- 6- Function: Automatic Filling & Capping machine
- 7- Filling range: 100-1000ml.
- 8- Filling nozzles and type: 6 anti foaming diving nozzles
- 9- Viscosity range: 1-20.000 Cps
- 10- Buffer tank: 80L.



HMI and SCADA system:

Both operating & controlling processes take place by control panel which made of SS. (304) sealed (IP-55) and contains:

- PLC attached with HMI touch screen to control of machine functions.
- Light, conducting, and magnetic sensors are.
- Contractors and thermal Relays.
- All switches and signal light.
- The Control panel attached with required electrical diagram.



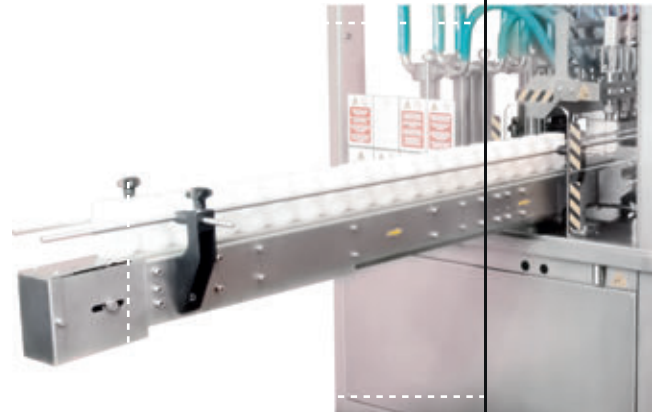
Conveyor System :

The multi-flexing plastic chain conveyor systems with Stainless steel beam permits horizontal as well as vertical distribution of products.

The conveying systems tight vertical bends save floor space by enabling multilevel transportation and make access easy for operators.

The collection of standard components guarantee the design of a customized conveyor solution with fast delivery time.

The base link parts of the chain links have the same basic shape, and the same technical properties. Five different materials are used. The standard material is acetal resin (POM). Different materials are used. The conveyor can be configured with the suitable standard chain according to the production requirements, e.g. temperature, strength, etc.



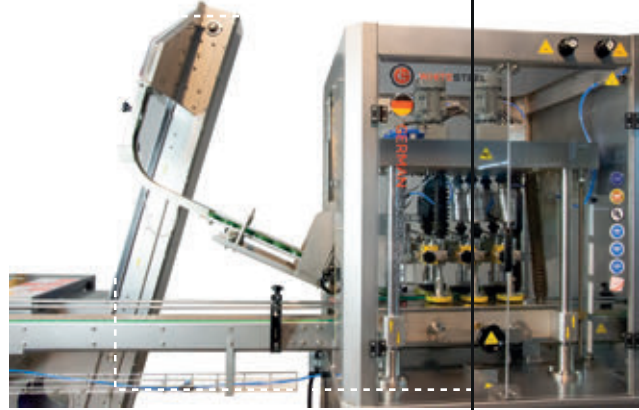
Filling System :

- Diving filling nozzles (6)
- Filling accuracy ($\pm 1\%$)
- Fills using FLOW METERS to control in the required filling quantity.
- Nozzles height can be adjusted based on size and height of the used containers.
- Works by diving mechanism (Servo Motor), where it's inserted into the can to prevent foaming.



Feeding system

- Cap feeder consists of:
 - bowl feeder.
 - elevator to feed plastic caps automatically to the tunnel feeder.
 - it's driven by a sensory system to control of machine work.



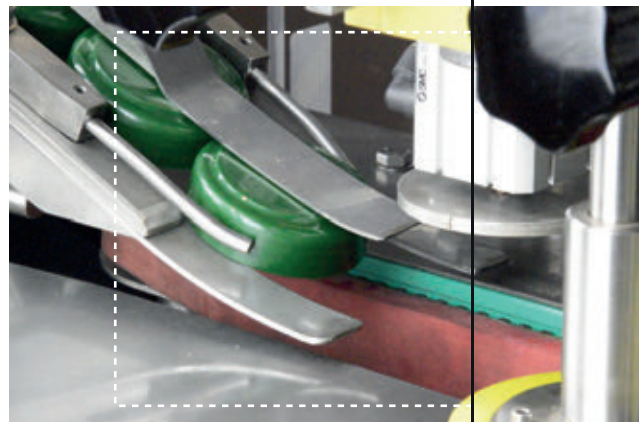
Feeding specifications :

- Caps are feed vertically on the bottles.
- Has a special conveyor that moves caps to the bottles.
- It's driven by a sensors system that is compatible with machine's work.



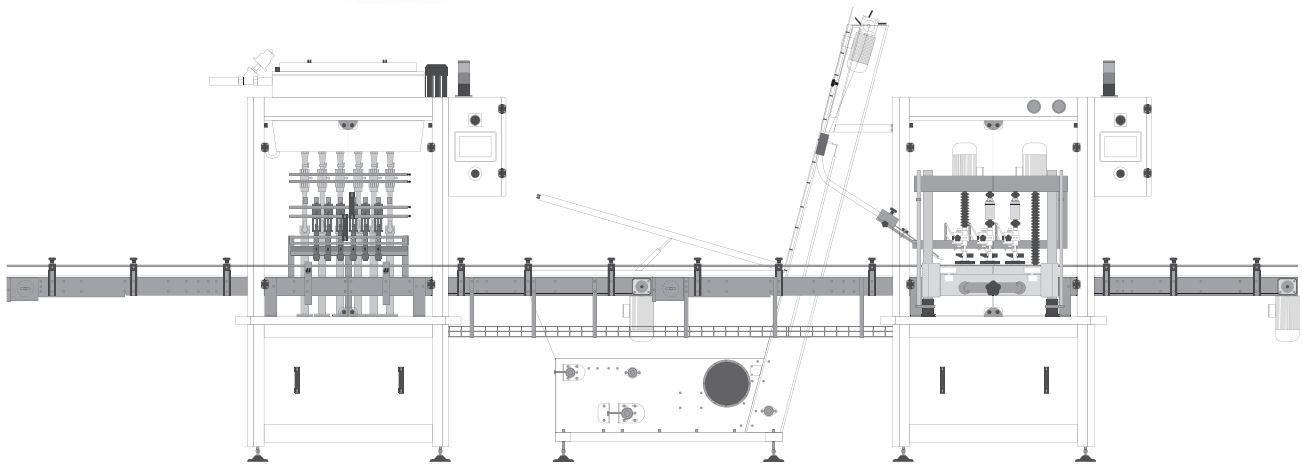
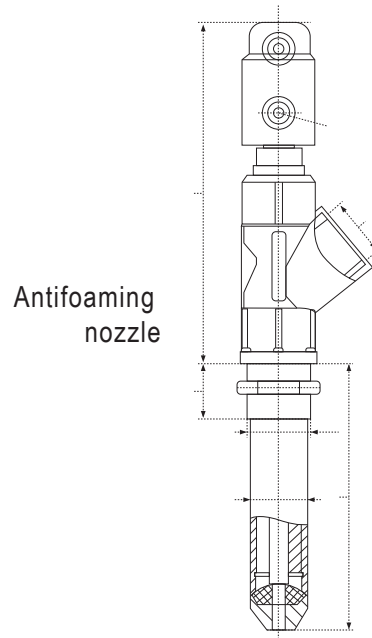
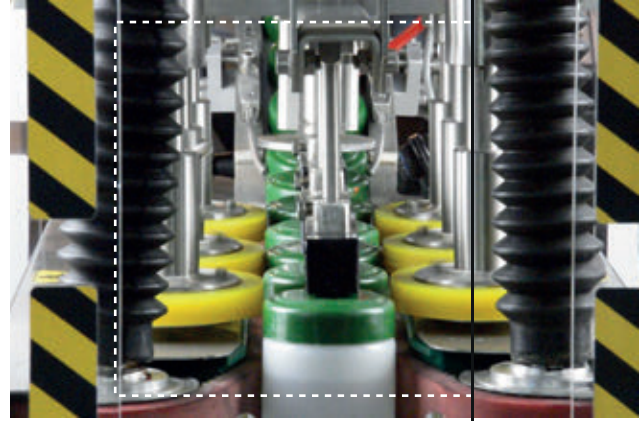
Sealing Rolls materials :

- Jars caps automatically goes into jars caps slot by adopting cap-pulling device.
- In order to the machine can fit on capping on various Jars volumes, and considering multi-usages in this machine, so it is adjustable on machine design.



Capping system:

- Linear cap screw
- Capping mechanism (Rotate) consists of a 6 rotary capping head which driven by sensors system that is compatible with machine's work.



Filling

Caps feeding

Closing



WHITESTEEL GmbH
We Create Solutions

The information is for guidance only. We reserve the right to modify any material or feature without notice in advance. Photos are not binding. For further information, please, consult our web site www.whitesteel.de

