



BICYCLE-STAND 453

Steel + Stainless steel | 860 mm

Specifications

U-rack made from perpendicular steel profiles (rectangular profile 50 x 20 mm mitre-cut). Other profile dimensions, heights and widths are available upon request at a surcharge. An assembly model is available.



BICYCLE-STAND 453 LED

Steel + Stainless steel | 860 mm

Specifications

Bike rail made from right-angled steel profiles with LED strip on the underside of the cross tube (50 x 20 mm rectangular profile, mitre-cut). Operated with 24 V low voltage, 1 m connector cable with plug socket at the base of the rail. Protection type IP 67. Other profile dimensions, heights and widths are available upon request at a surcharge. An assembly model is available.

Technical information

LED strip (approx. 24.5 x 770 mm) on the underside of the cross tube

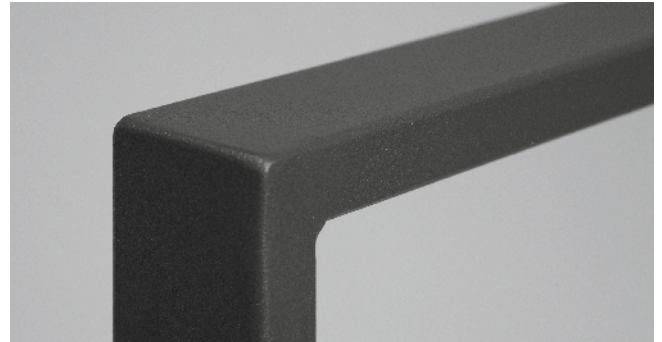
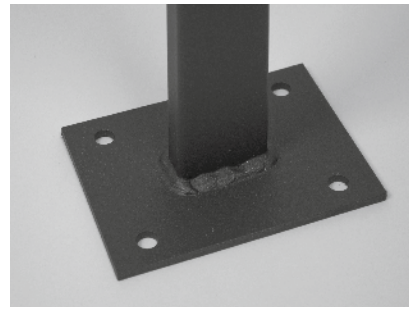
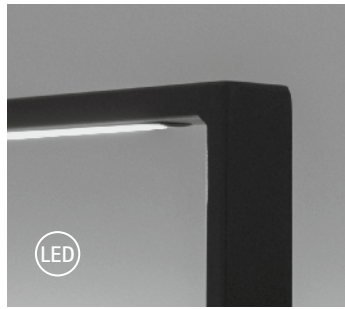
Power supply:	24 Volt DC
Power input:	ca. 6,7 W
Luminous flux:	approx. 560 lm
Reflected beam angle:	120°
Light colour:	4000 K
Light output:	CRI > 80
Protection type IP 67:	IP 67
Connector cable:	approx. 1 m with plug, IP 67

The connection, incl. all technical components, is arranged by the customer, and is not part of the delivery.

The LED unit is available as a spare part and be replaced in case of damage.



2018



► Usable side by side as a handrail or railing (see p. 125)

Mounting

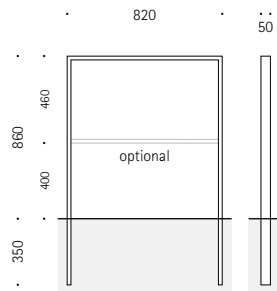
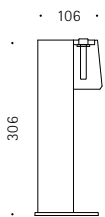
Concrete embedment
 Option: removable with ground shells
 Alternative: version with two flanges to enable screwing

The 453 LED bike rails are removable to enable defective LEDs or cables to be replaced if damaged.

Finish

- Stainless steel 1.4301 pickled and smoothed, grain 240
 Optional: electropolished/high-gloss (no surcharge)
- Steel ST37, galvanised with powder coating in standard RAL colours or DB 703
- Other colours available on request at a surcharge
- Optionally with knee rail

Ground shell*
 (Cross-section)



Ground shells (pair), 400 mm*	458.002
Cover plates for ground shells	458.003
Assembly model	458.004

	Concrete embedding/Removable*	With flanges to enable screwing
453 Steel ST37, galvanised	453.001	453.240
453 Steel ST37, powder-coated	453.011	453.040
453 Stainless steel 1.4301	453.002	453.140

	Concrete embedding/Removable*	With flanges to enable screwing
453 LED Steel ST37, galvanised	453.101	453.540
453 LED Steel ST37, powder-coated	453.111	453.340
453 LED Stainless steel 1.4301	453.102	453.440

*For the removable version, two ground shells are needed.

