

# 公司简介

## *Company Presentation*



Focus On Metal Parts & Plastic Products Custom Services

[www.mxmparts.com](http://www.mxmparts.com)

[sales@mxmparts.com](mailto:sales@mxmparts.com)



### Rapid Response

Respond within 24 hours  
exclusive consultant 1v1  
service



### Quality Plan

Depending on the  
circumstances give you the  
most profitable solution



### Advantage

Optimize processing  
technology, improve quality  
and reduce cost

# Who We Are?

## Features

### 01

Ming Xiao is a Cooperated Company, registered in HK 2012, we have factory name Ningbo Dalilai Mfg Co.,Ltd



## Location

### 02

We located in Ningbo China, the east of China. Ningbo Seaport is the world's largest port in terms of total cargo throughput



## Our Jobs

### 03

We mainly engaged in metal parts and plastic Products custom manufacturing & exporting.



## Team

### 04

We have 50-80 workers, 10 experienced engineers ,10 officials,10 persons in QA & QC.



## Businesses

### 05

Integrity and win-win, good quality & thoughtful service for the survival of the fundamental.



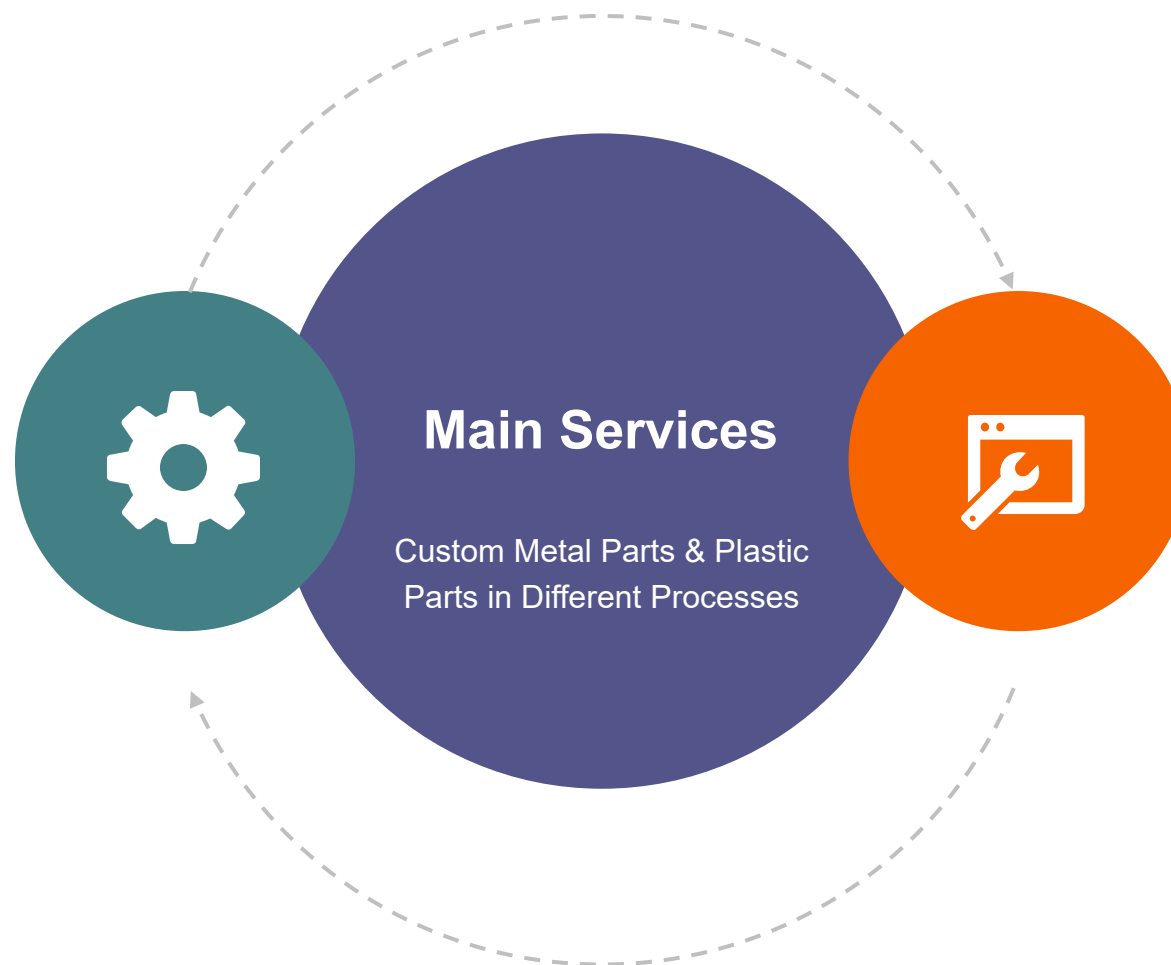
# What We Do?

## CNC Turning & Machining

Machined Parts By Turning, Milling, Grinding, Drilling, Boring, Reaming, WEMD.

## Metal Stamping & Bending

Sheet Metal Parts & Pipe Parts Formed By Die Stamping, Deep Drawing, Pipe Bending, Welding, Laser Cutting



## Plastic Injection Molding

Plastic Injection Molded Parts & Daily Necessities

## Plastic Extrusion

PVC Profiles, ABS Profiles, PC Profiles, PP Profiles

# How To Quote?



## Send Details

Such as particular drawings (2D,3D), quantity, special informations if needed.



## Cost Check

We will check the material cost and machining costs, finally get the unit price.



## Send Quotation

Will quote price together with details, such as Price term, Payment Term, Lead Time, Packing.

# OutSourcing Service?



Ningbo is an important industrial town, where there are rich processing resources, we have a lot of related friendly factories in cooperation, if you need, we are willing to help purchase!

# Terms & Policy?

## Price Terms

FOB Ningbo Or Shanghai,CIF  
Destination,CFR,DDP For Air Freights



## Certificates

Quality: COC, Test Reports As Requests  
Origin: CO,FORM A, FORM B, FORM E...



## Currency & Payments

US Dollars, EUR  
Cost of Mold / Tooling is 100% in advance, Mass  
Production Order is 30-50% in advance,balane  
pay against to shipment



## Quality Policy

Special request will be 100% inspected before  
shipping,once has quality problem at customer's  
side,will be repaced the disqualified pieces and  
credit the sorting cost.

# Cooperation



## Friendly & Mutual Benefit

Satisfied with the price, through some details of the communication to establish mutual trust



Place Order For Samples → issue PI → Tooling Cost → Confirm Payment Receipt → Prepare Mold Or Tool / Order Raw Materials → Make Samples → Send To Customer For Approval → Customer Feedbacks → (If Quality OK) Place Order For Mass Production → Pay Deposit → Buy Materials For Production → Inspection → Packing → Notify Customers → Arrange Shipment → Pay Balance → Release Customs Documents → Finish Order. (If Quality Problems) → Redo Samples





展示

## Facilities & Products

From Next page, you will see our production equipment and products, I hope you will find them useful.

MING XIAO MANUFACTURING CO., LTD



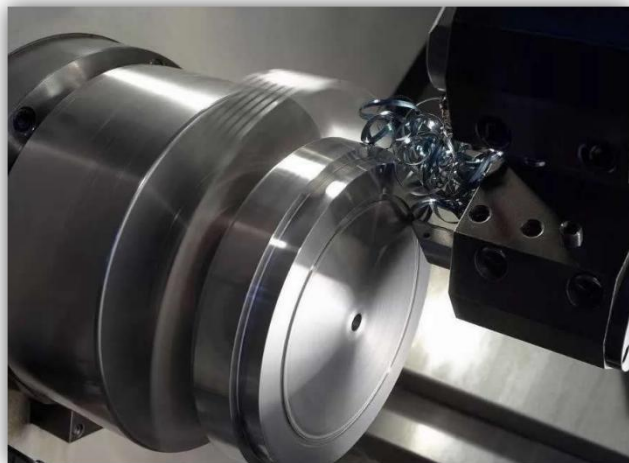
# Mold & Tooling Working



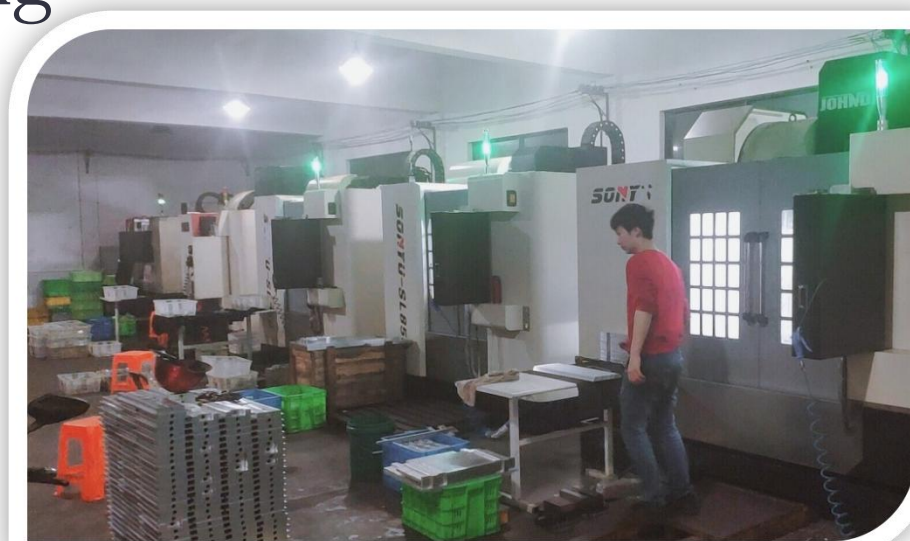
# CNC Turning & Machining



# CNC Turning & Machining



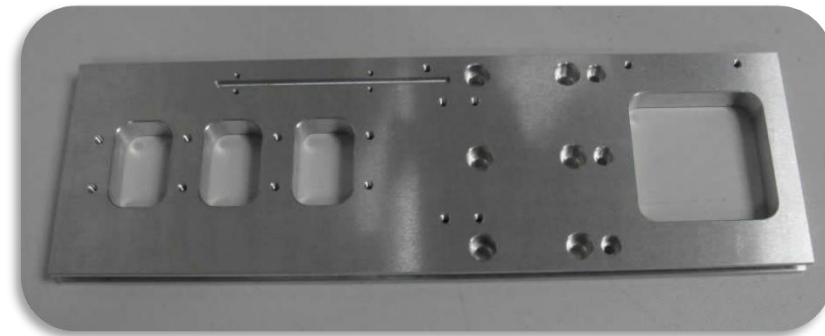
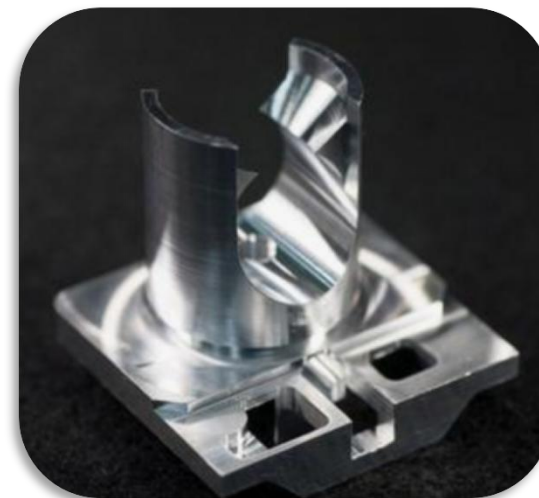
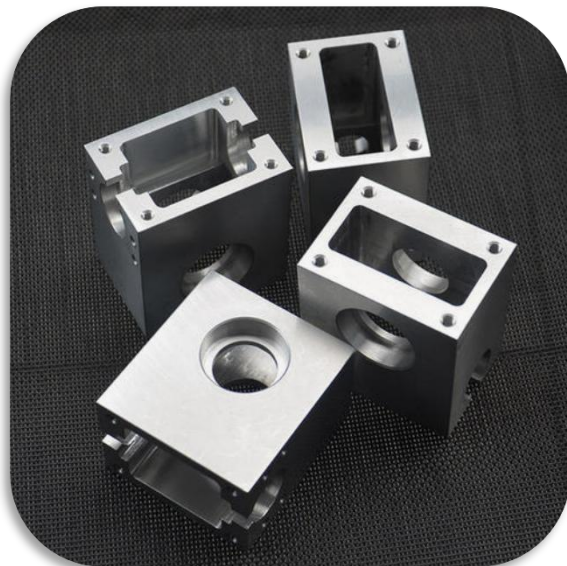
# CNC Turning & Machining



# Turned & Machined Parts



# CNC Milled Parts



# Informations

## About Turned & Machined Parts

### Materials

Stainless Steel:  
SS303,SS304,SS316,SS430...  
Aluminum Alloy:  
AL6061,AL6068,AL7075...  
Carbon Steel:  
AISI1020,AISI1045,42CrMo...  
Copper & Brass: T1,T2,E-  
Cu,H62Pb1,H63,H59...

### Product Capacities

Outer diameter: 1mm~600mm  
Diameter:1mm~600mm  
Length:  
2mm~6000mm  
Tolerance:  
 $\pm 0.005$ mm for small parts  
Surface Finish:  
Ra0.4 / Rz 3.2 / N5

### Finish Treatment

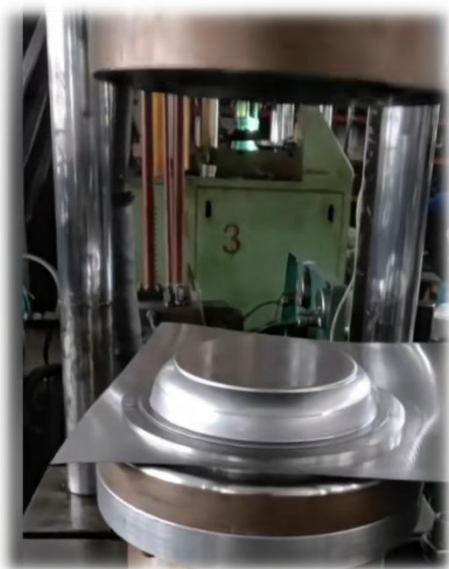
Polished, Brushed, Hardening,  
Anodine, Anodizing, Hard  
anodizing, Electroplating of  
chrome/zinc/nickel plated,  
Tinning, Copperize, Golden,  
Silver plated,Colour spray-  
painting, Powder Coating,  
Blackening, Hot-dip galvanizing,  
Tephlon plating, etc.

### Lead Time

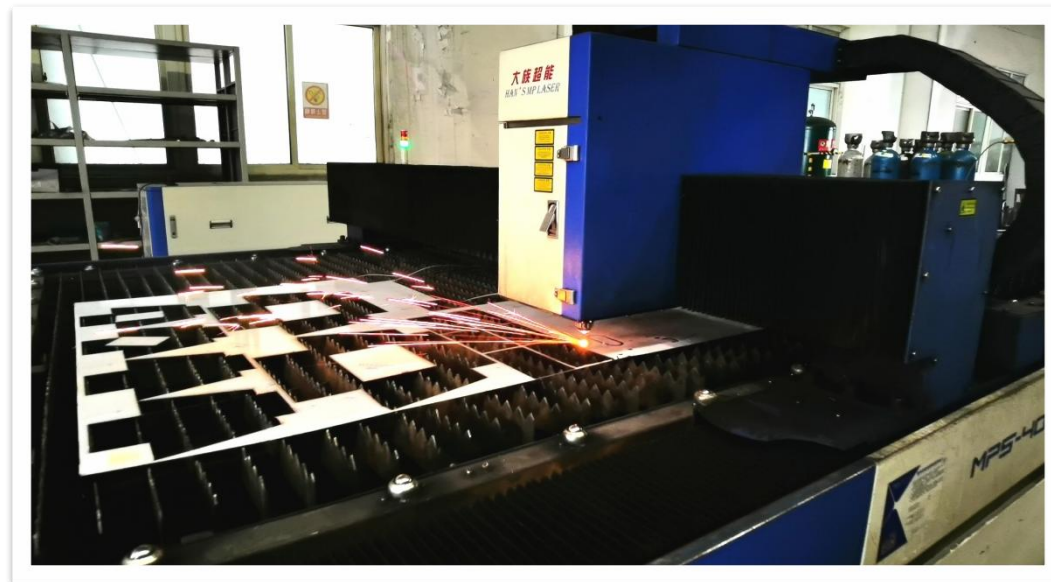
Lead time for custom samples  
of metal machine parts is  
10days.(if need tool or mold,  
will reach to 30 days)  
Lead time for mass  
production:generally a order is  
30-60days, if machining  
process is too complicated or  
quantity is very high,the lead  
time will longer.



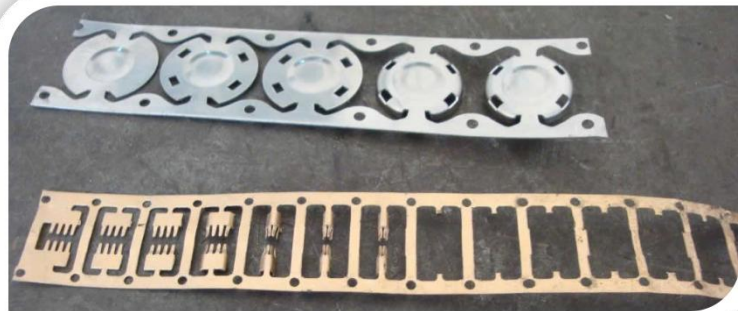
# Sheet Metal Fabricating



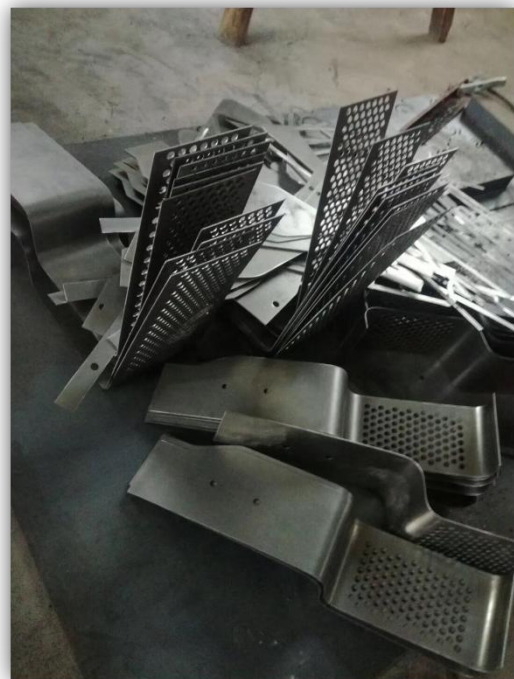
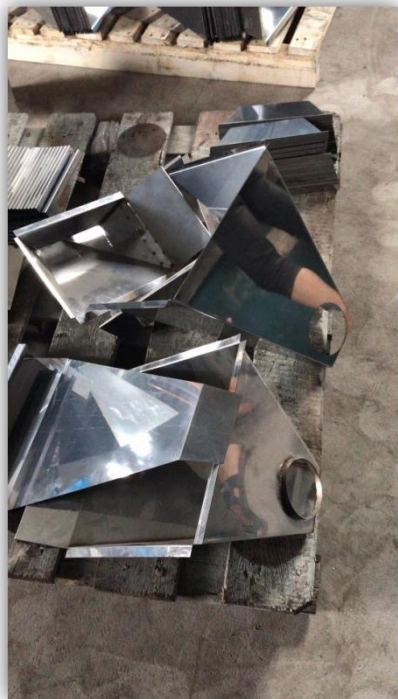
# Sheet Metal Fabricating



# Sheet Metal Parts

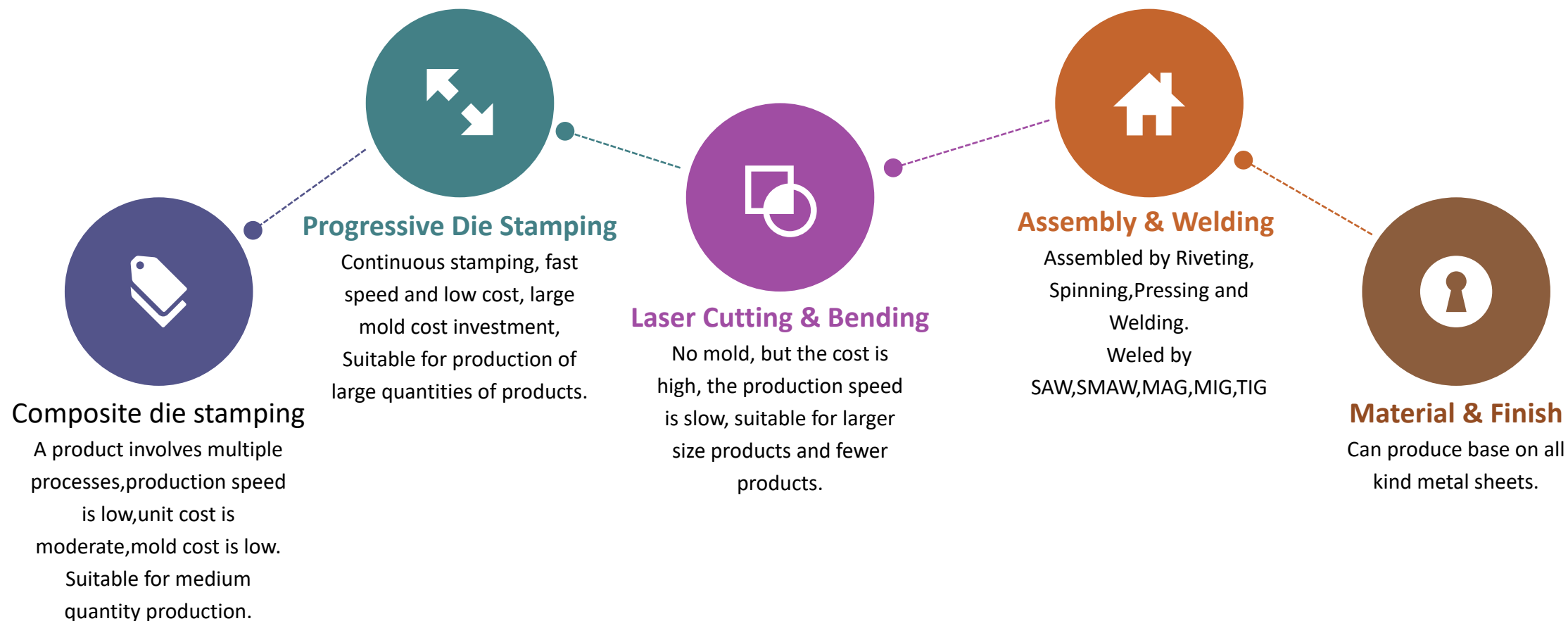


# Sheet Metal Parts

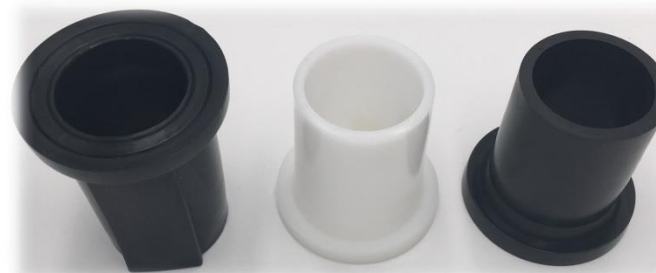
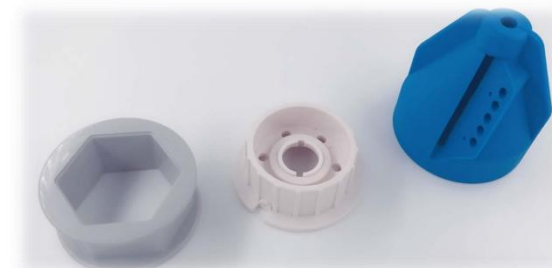


# Informations

## Sheet Metal Formed Parts



# Plastic Injection Molding



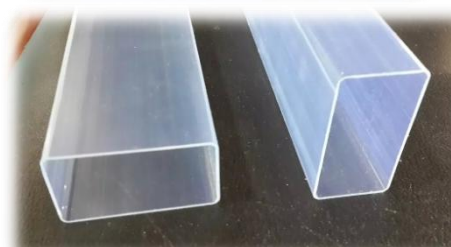
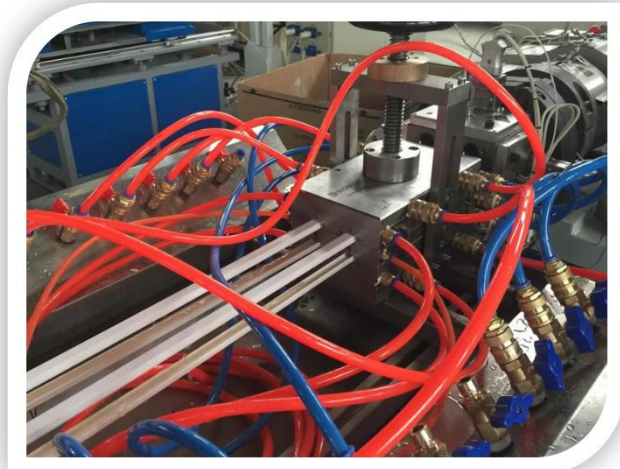
# Capacity Of Plastic Injection

<b>Material</b>	PA, PA6, PA+FG, ABS, FR ABS, POM, PC, PS, HIPS, PP, PVC, TPR, TPU, TPE, HDPE, PMMA, SBS, SEBS, PPSU, etc.
<b>Mold Cavity</b>	Single or Multi-cavity
<b>Mold Base</b>	LKM or Equivalent Standard mold base
<b>Core Steel</b>	NAK80 Prehardened steel, 718, 718H, P20, S136 etc.
<b>Machine Cap.</b>	20 sets range from 30Tons to 530Tons
<b>Tolerance</b>	Min +/-0.1mm,
<b>Max Mold Size</b>	830mm X 800mm
<b>Product Unit Weight</b>	From 0.1gram to 2,000grams
<b>Tooling Lead-time</b>	30 – 45 Days
<b>Production Lead-time</b>	2-4 weeks
<b>Surface Treatment</b>	Chrome Plating, Silk-Printing, Laser Etching, Texture, Vacuum coating, etc
<b>Mold Life</b>	50000 shots -500000 shots
<b>Delivery Time</b>	In about 30 days for new production
<b>Packing</b>	Plastic paper, then put on Composite wooden pallet.
<b>MOQ</b>	1000 pcs acc. to plastics' size, small pieces will higher MOQ



# Plastic Extrusion Profiles

Materials: PVC, ABS, PE, PP, PS, PMMA, PC  
Technics: Cold Extruding, Hot Extruding,  
2Colors Co-extrusion, Soft & Hard Co-  
extrusion, embossing extrusion  
Machining Services: holes Cutting,

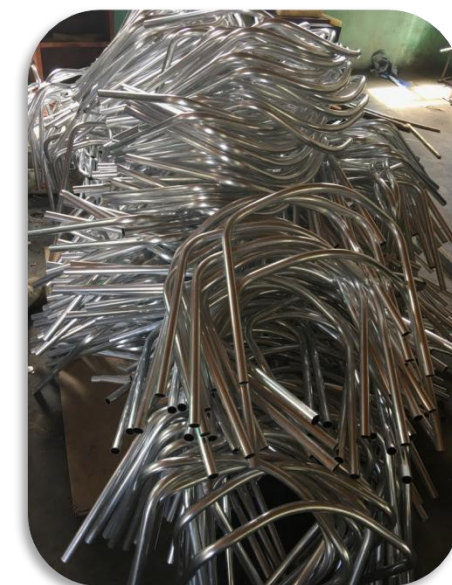




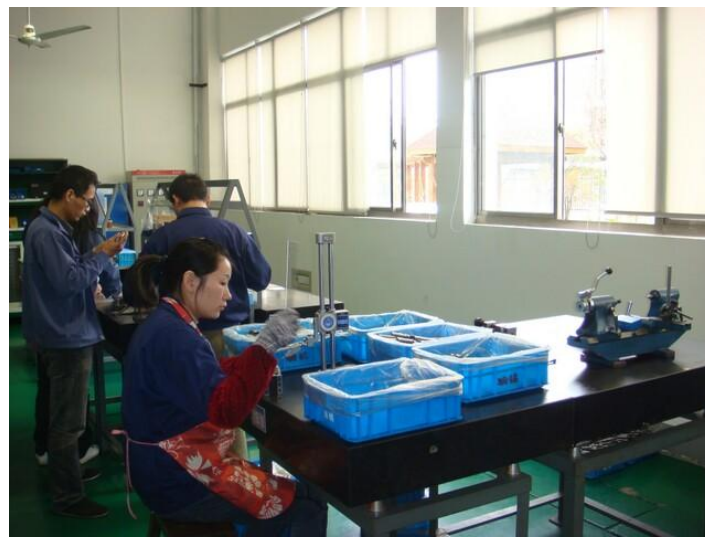
# Pipe Forming



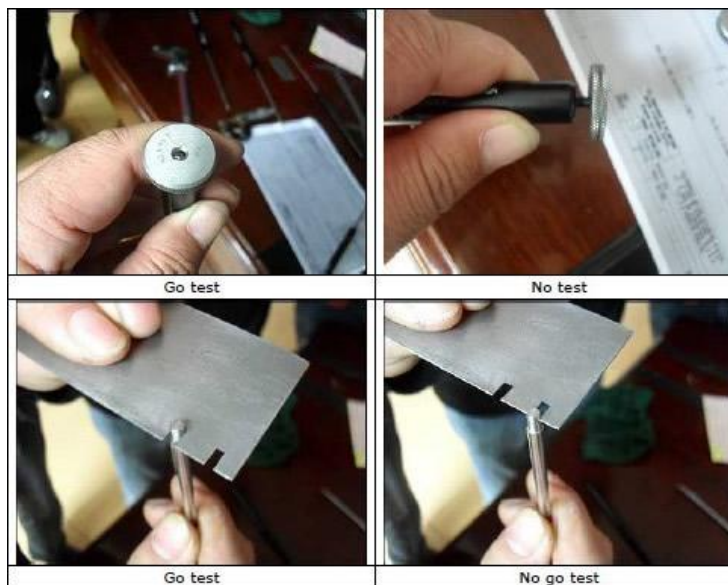
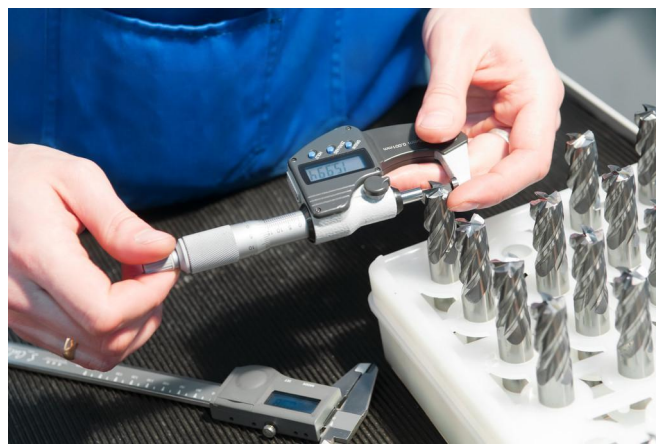
# Pipe Forming Components



# Inspections



# Inspections



# Packing & Shipment



# Market Division

**Domestic**  
30% Sales come from domestic sources

**America**  
30% Sales come from USA & Canada

**Europe**  
20% Sales come from Europe,main customers from Denmark, Germany, Czech Republic,Italy,France,UK

**Others**  
20% come from The ASEAN, Indonisia, Malaysia,etc





# 感谢一路有你

Thanks for having you all the way

Mobile / WhatsApp: +86 13780014913

Skype: [jackie.chang574](#)

Email: [sales@mxmparts.com](mailto:sales@mxmparts.com)

RM 506,Bldg #11, Dongcheng Shuian,

#446 Zhonghe St., Yinzhou District,

Ningbo, 315100, China

[www.mxmparts.com](http://www.mxmparts.com)

