

ALXR[®]

HEALTHCARE > SUPPLY CHAIN



Imaging Radiography

CGO-2100 | Interventional Cardiology | Angiography System

NHS Supply Chain Framework Contract Number:
FAG0000000000000000000000



NHS Supply Chain
approved supplier



Telephone: 0116 246 0733

Email: imaging@alxr.co

Web: www.alxr.co

IMAGING RADIOGRAPHY

Lorem ipsum dolor sit amet, consectetur adipiscing elit, sed diam nonummy nibh euismod tincidunt ut laoreet dolore magna aliquam erat volutpat. Ut wisi enim ad minim veniam, quis nostrud exerci tation ullamcorper suscipit lobortis nisl ut aliquip ex ea commodo consequat. Duis autem vel eum iriure dolor in hendrerit in vulputate velit esse molestie consequat, vel illum dolore eu feugiat nulla facilisis at vero eros et accumsan et iusto odio dignissim qui blandit praesent luptatum zzril delenit augue duis dolore te feugait nulla facilisi.

Lorem ipsum dolor sit amet, consectetur adipiscing elit, sed diam nonummy nibh euismod tincidunt ut laoreet dolore magna aliquam erat volutpat. Ut wisi enim ad minim veniam, quis nostrud exerci tation ullamcorper suscipit lobortis nisl ut aliquip ex ea commodo consequat.

Lorem ipsum dolor sit amet, consectetur adipiscing elit, sed diam nonummy nibh euismod tincidunt ut laoreet dolore magna aliquam erat volutpat. Ut wisi enim ad minim veniam, quis nostrud exerci tation ullamcorper suscipit lobortis nisl ut aliquip ex ea commodo consequat. Duis autem vel eum iriure dolor in hendrerit in vulputate velit esse molestie consequat, vel illum dolore eu feugiat nulla facilisis at vero eros et accumsan et iusto odio dignissim qui blandit praesent luptatum zzril delenit augue duis dolore te feugait nulla facilisi.

?????????????

Lorem ipsum dolor sit amet, consectetur adipiscing elit, sed diam nonummy nibh euismod tincidunt ut laoreet dolore magna aliquam erat volutpat. Ut wisi enim ad minim veniam, quis nostrud exerci tation ullamcorper suscipit lobortis nisl ut aliquip ex ea commodo consequat. Duis autem vel eum iriure dolor in hendrerit in vulputate velit esse molestie consequat, vel illum dolore eu feugiat nulla facilisis at vero eros et accumsan et iusto odio dignissim qui blandit praesent luptatum zzril delenit augue duis dolore te feugait nulla facilisi.

Overall Upgrade For Better Clinical Practices

Manipulation upgrade, safety upgrade, user-experience upgrade

Wandong latest model of CG0-2100 interventional cardiac and vascular imaging system brings customers an overall upgraded clinical experience, including clearer imaging, abundant functions, ease of operation, lower radiation and high efficient workflow and the multi-functional systems. This satisfies all clinical demands of cardiac, neurological and peripheral vascular intervention treatment.

200
Million

Clinical Practice

400
Sets

Installations in Total





30
Yrs

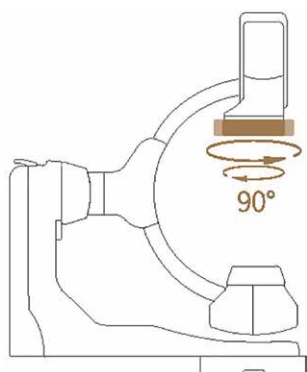
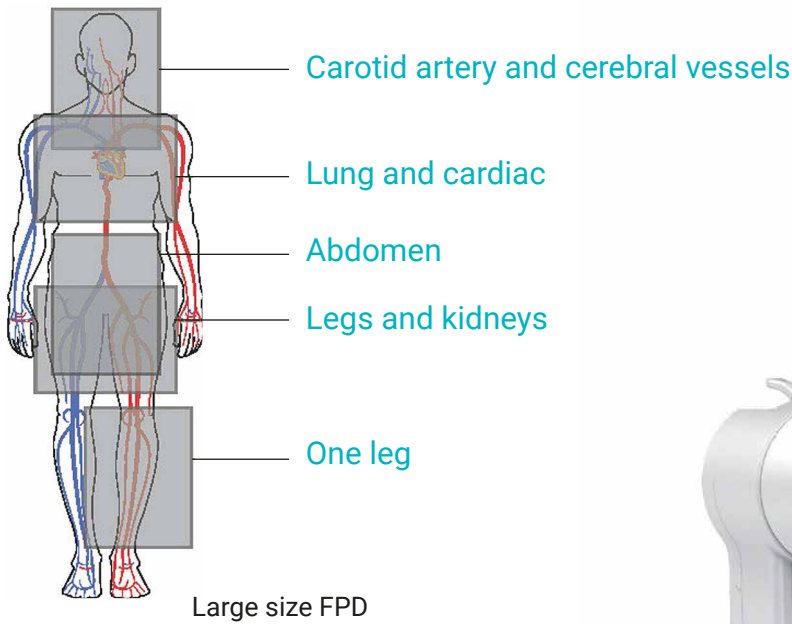
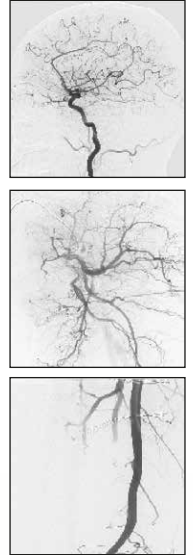
R&D Experience



High Performance Imaging

Large size FPD, for better imaging

- 
High Definition
 194µm pixel size, higher DQE, lower noise, more image detail.
- 
High SNR Low Dose
 16 bits AD conversion, reduces pixel noise and linear noise, large dynamic range brings better imaging at low dose.
- 
Ghost Artifacts Elimination
 Venus 5 chips, high reading speed, no ghost artifacts.
- 
Large FOV
 40cm x 30cm FPD satisfies various applications. In cardiology applications, no need to move C-arm for iradial artery imaging.



FPD 90° motorised rotation



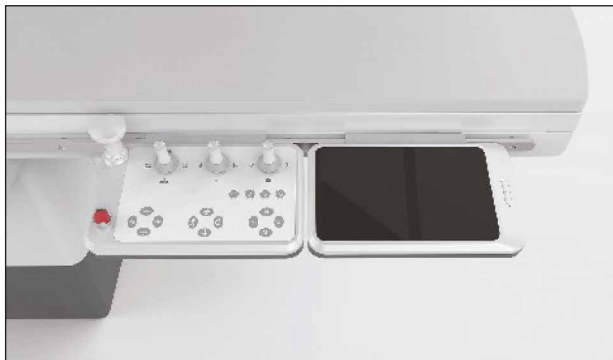
High Performance Imaging

The unique design of mechanical moving structure is convenient for manipulation and quick imaging.



Multiple Anti-Collision System

30 virtual model, real-time calculation prior to the mechanical moving.
Capacitive non-invasive object detection, intelligent protection will initiate when approaching patient.
The self-balanced structure detector will auto retreat once it contacts any object.



Integrated Control Panel

Table side console, integrated control of mechanical moving and imaging functions.



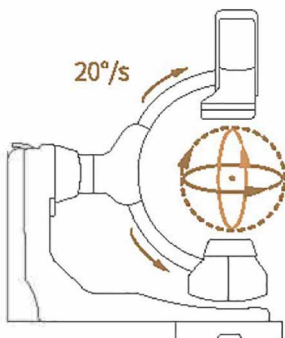
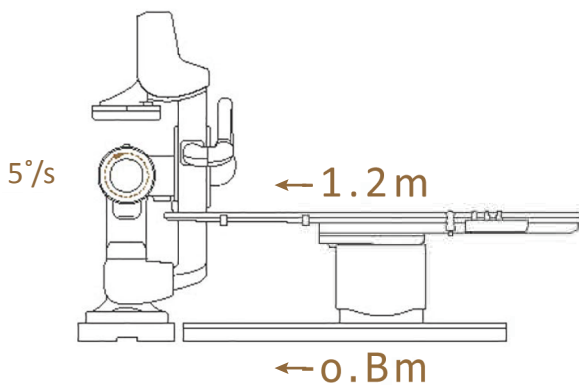
Intelligent Handle Control

All movement control in one hand.



1.2m examination depth

Full coverage of longitudinal imaging from femoral artery to cranial nerve puncture. No need to move C-arm when switching examination from cardiology to neurology.



3 Concentric Axes Structure

C-arm rotation/sliding will not change the FOV center.

2 Meters Longitudinal Travel Range

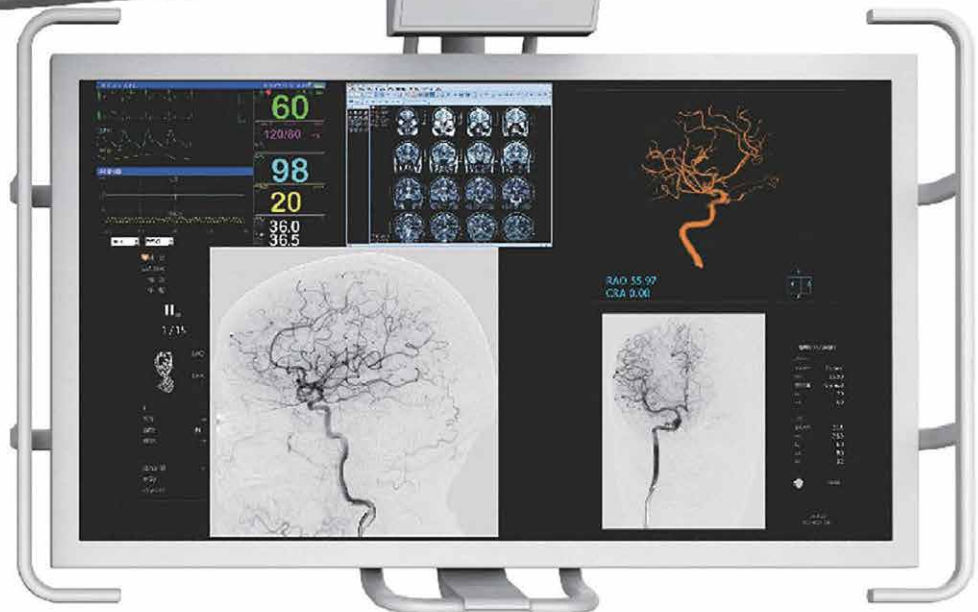
Head to toe examination without patient moving.

High Precision Moving and Scanning

LAO/RAO upto 25°/s

CRA/CAU upto 20°/s

Rotational angiography upto 50°/s



(Optional AIO LCD)

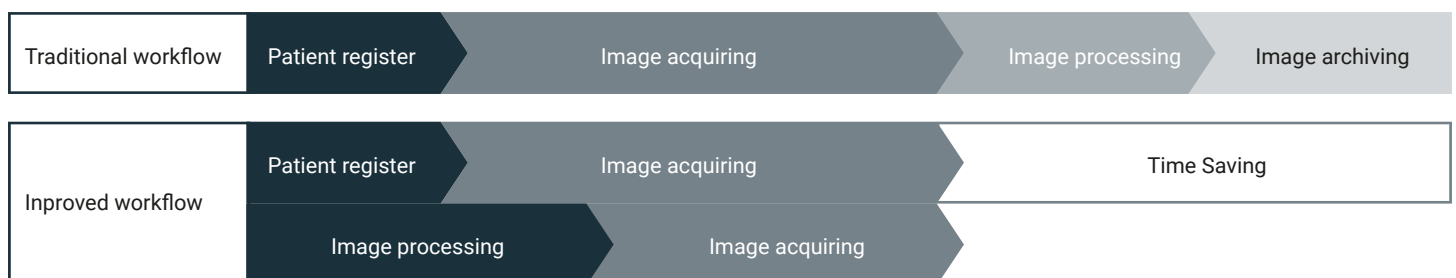
Efficient and Reliable

New released InvaRay 3.0 intelligent imaging platform, bringing high efficient workflow.

High Efficient Workflow

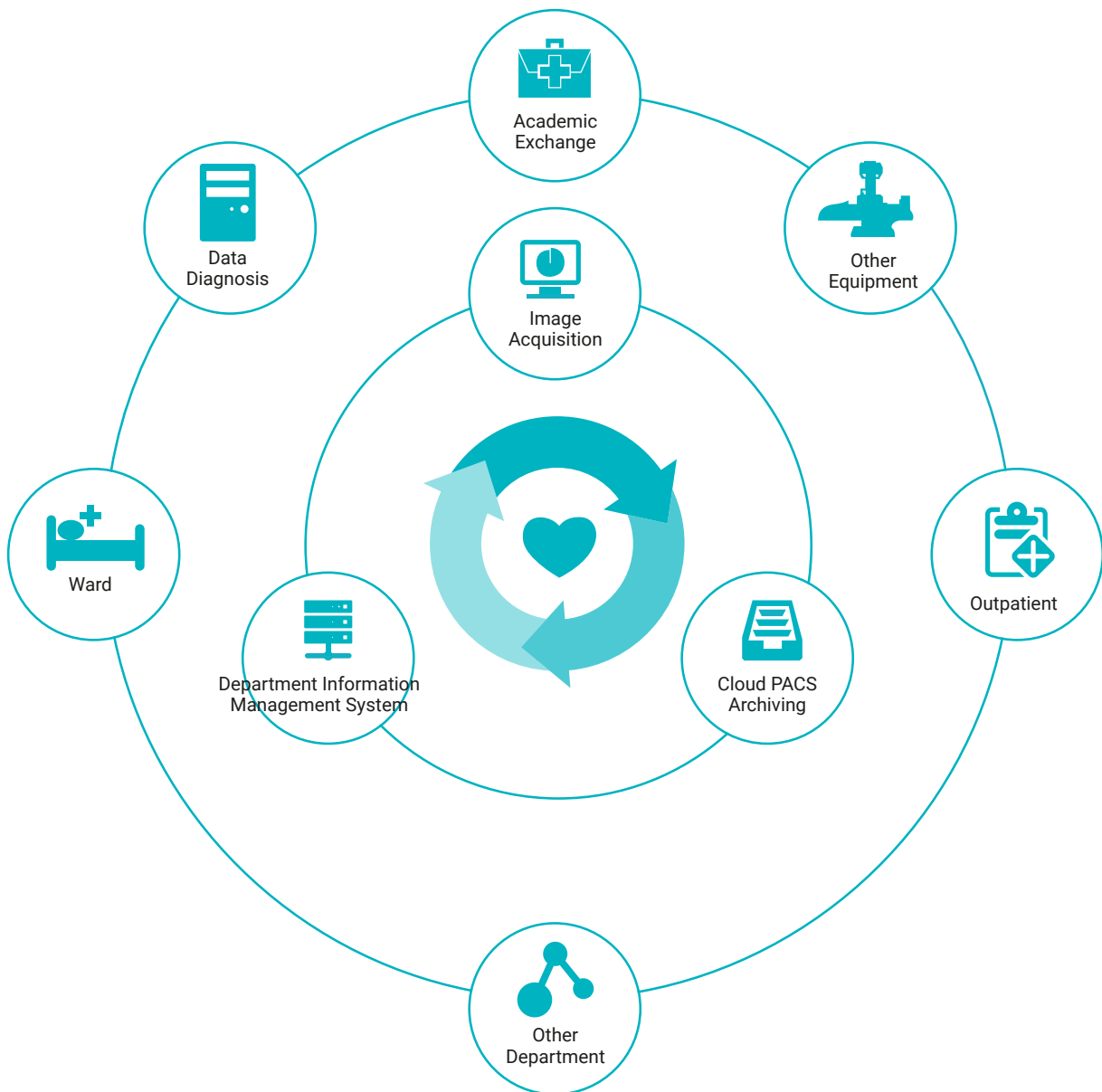
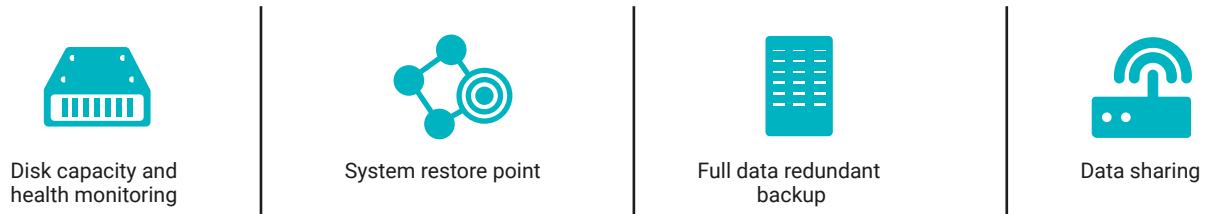
Parallel processing: Image processing and transmission can be done at the same time of image acquisition that enables a high efficient workflow.

Integrated display: real-time image, reference image and other relevant information can be displayed on one LCD, and the display layout and contents can be adjusted according to the clinical demands.



Data Safety

Raid applied in acquisition workstation for high system performance and data security.

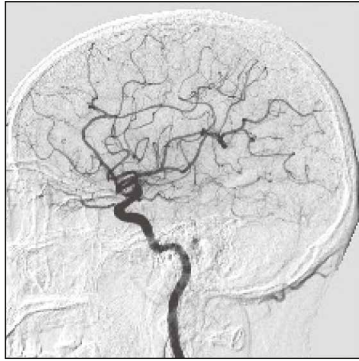


Data Sharing

Fully compliant to DICOM network protocol, to realize opening and sharing of patient information, meanwhile reduced examination time.

Auto Elastic Optimized Registration Technique

AER can realise auto elastic optimised registration to ROI, that helps eliminate embossed artifacts caused by the background movement.



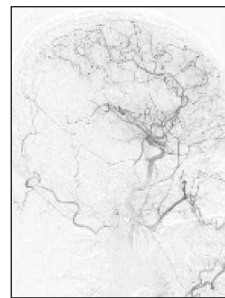
Before registration



After Registration

Vascular Road Track

An overall vessel filling image can be achieved from the combination of vessel filling images of different time phases.

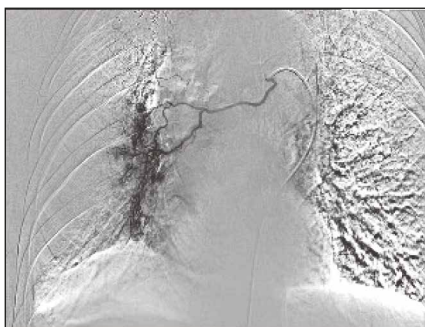


VRT processing

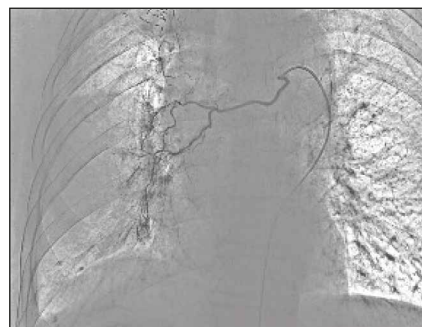


Selfsubtraction Processing Technique

New algorithm of subtraction is applied, comparing to traditional mask subtraction, image is clearer on moving background.



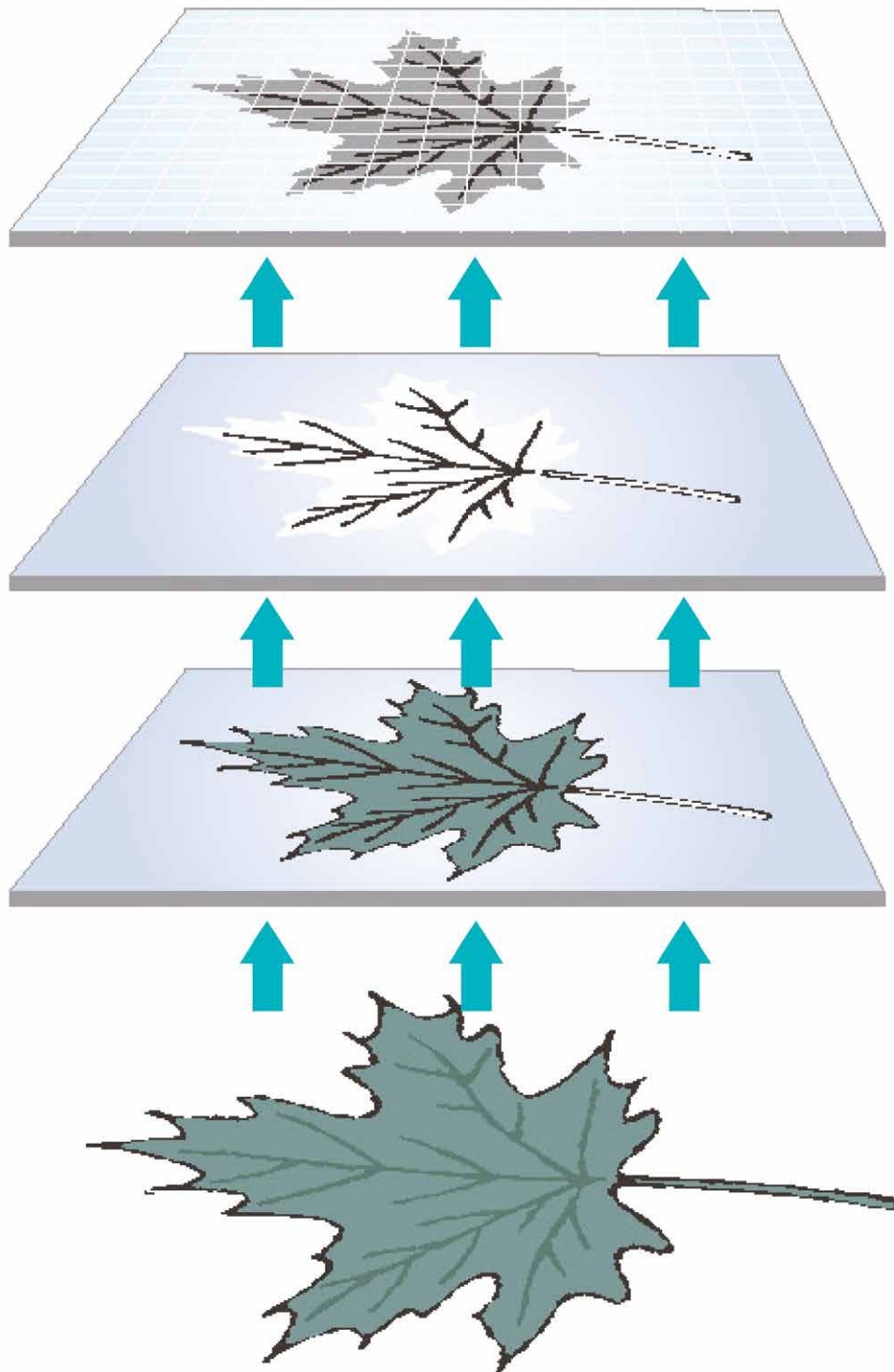
Before processing



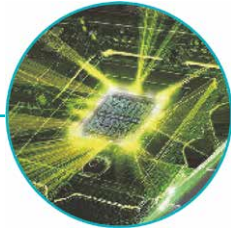
After processing

Multiple Protection from Excessive Radiation

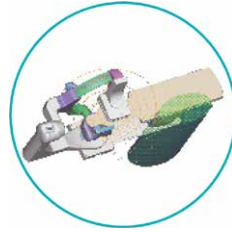
The idea of low radiation was implemented into the design of the entire system. From hardware to software, research has been done in every segment to acquire better images at lower radiation, with the aim of providing the patient and surgeon with a safer environment.



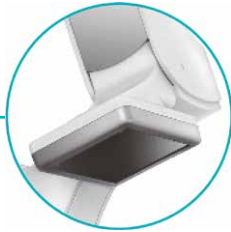
Advanced algorithm of image enhancement and noise reduction applied to acquire high SNR at low dose.



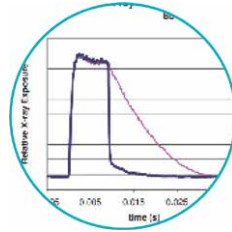
Radiation line calibration combined with surgeon safety area, makes structural design optimised.



Compact design of detector and considerate anti-collision protection system allows smaller SID to acquire image at lower dose.



Grid-control technology, improves X-ray quality by reducing scattered X-rays.



According to the body part and acquisition mode to optimise exposure settings, dose curve and post processing parameters.



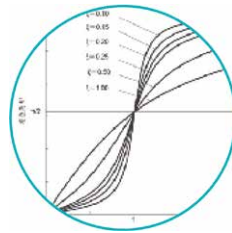
Virtual collimation combined with LIH to indicate moving of imaging zone without exposure.



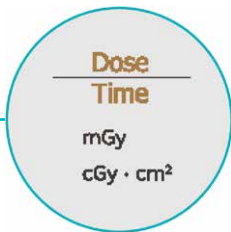
Traceable patient dose report can help doctor with visualised dose improvement.



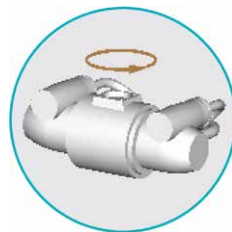
Multiple pulse rate fluoroscopy, doctor can choose high/mid/low imaging dose at table-side.



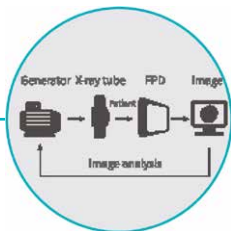
Real-time display of radiation dose for doctor to learn.



Intelligent radiation field control and multiple filtration switching, to provide optimisation to every clinical case.



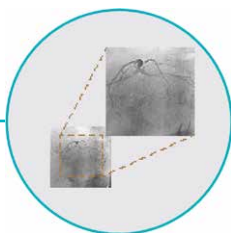
New automatic dose control system, exposure control by image quality evaluation automatically, to ensure high quality image at lowest dose.



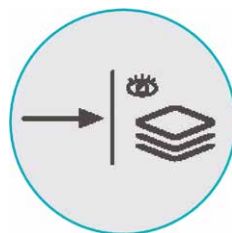
Ceiling suspended screening and table-side protection device to protect a doctor from scattered X-rays.



Fluoro image zoom-in can reach the result of small FOV.

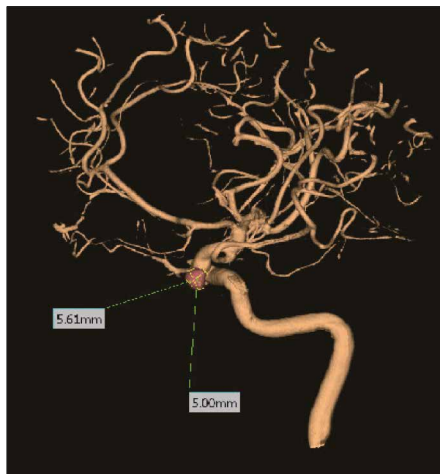
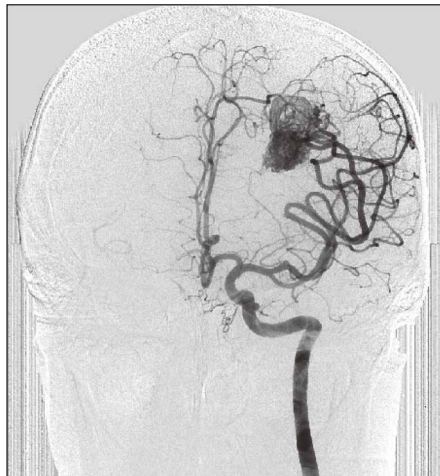
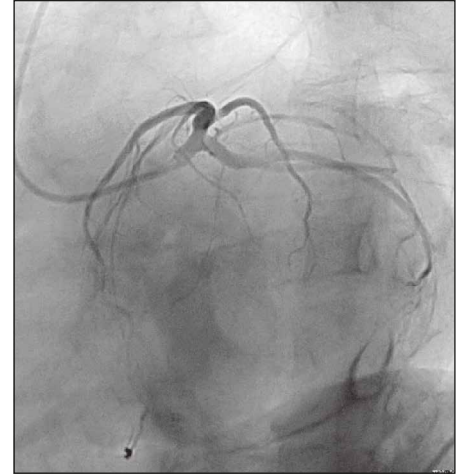
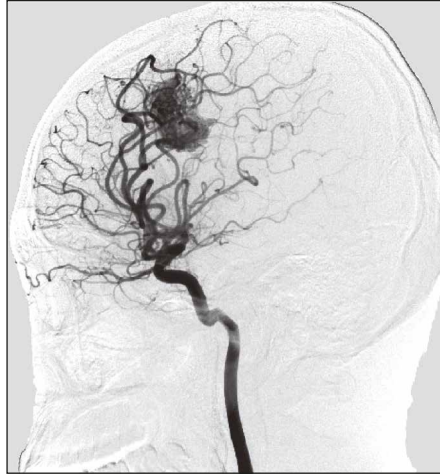
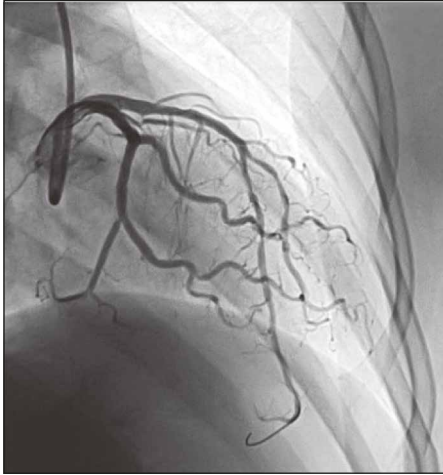


Fluoroscopy Loop Storage can store a single frame of image or fluoroscopy loop up to one minute, so that to avoid repeated exposure.



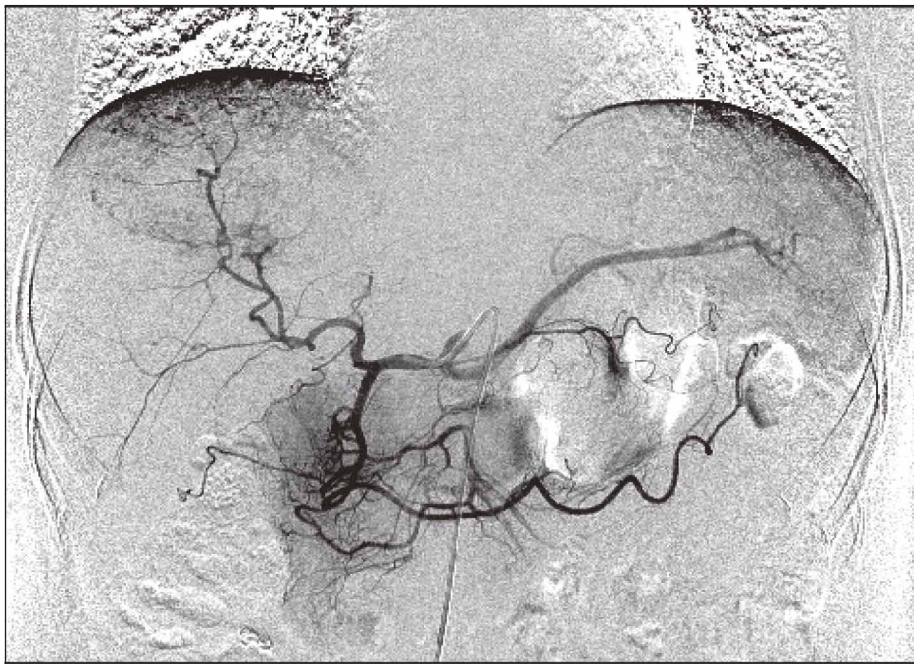
Powerful Practicability For Different Clinical Applications

Design for cardiovascular, cerebrovascular and peripheral vascular intervention 3D imaging, CBCT, stepping stitching and other advanced functions assist clinical examination



Coronary (first 4)

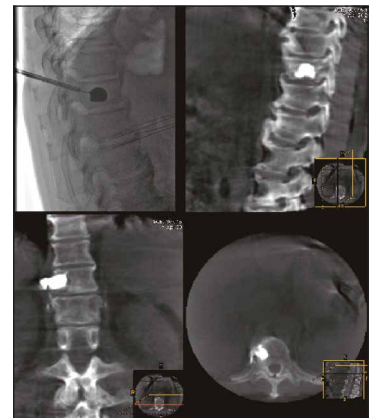
Cerebrovascular (last 4)



Liver



Stepping stitching



Peripheral vascular

Global service caring for you



Professional team

Wandong imaging products have been installed in over 90 countries, more than 100 distributors and authorized service partners are ready to provide professional service.



24hours online support

Quick response and remote technical support, on-line trouble shooting, spare parts inventory and quick delivery.



Regular maintenance

Regular maintenance by experienced and qualified engineers, guarantees the stable operation, prevents major failures, and extends the equipment life.



Free software upgrade

Fully self-developed acquisition platform, free lifetime software upgrade, always providing you an excellent experience.





1. Configuration List:

System Standard Hardware Configuration

No.	Part Name	Model	Manufacturers	Quantity
1	High Frequency Generator	IN-GE 100kW	WDM	1SET
2	Flat Panel Detector	Paxscan 4030CB	VARIAN	1SET
3	X-ray Tube Assembly	G-1582	VARIAN	1SET
4	Oil Cooling Circulating System	HE581	VARIAN	1SET
5	Cathlab-table	GC-2	WDM	1SET
6	C-Arm	CB-4	WDM	1SET
7	Imaging Workstation	PC Console	WDM	1SET
		19" LCD Monitor	WDM	1SET
		19" Monochrome Medical LCD	WDM	3 SET
		Software Packages (TX-AN2000)	WDM	1SET
8	Uninterruptible Power Source	C3K	iv-techmould	1SET
9	High-voltage Cable	75kV / 25m	Claymount	1SET
10	Collimator	IN-CO	WDM	1SET
11	Suspended Lead Protective Screen	b0.5	WDM	1SET

12	AreaDosimeter	IBA DAP	IBA	1SET
13	Accessory Bag	Intercom System	WDM	1SET
		Oil Circulating Device Stents		
		Exposure Foot Switch		
		Headscarves Shelf		
		Monitor Hanger for Four Monitors		
		Tableside Lead Protection		
		Infusion support		
		Two arm supports		
		Hand support board		
		Plate tray support		

System Standard Software Configuration

No.	Part Name	Model	Manufacturers	Quantity
1	WD-Acquire Image Acquisition Operating Software.	V2.0	WDM	1SET
2	WD-CAN BUS embedded Control Software	V2.0	WDM	1SET
3	WD-CGO System Operating Software	V2.0	WDM	1SET

System optional components (Optional)

No.	Part Name	Model	Manufacturers	Quantity
1	3D Reconstruction Workstation	WD-3D Diagnostic System	WDM	1SET
2	Diagnostic Workstation	WD-REPORT Image Diagnostic System	WDM	1SET
3	Advanced Diagnostic Workstation		WDM	1SET
4	Rotating & stepping Angiography system (including software)		WDM	1SET
5	Compartment Operating Console		WDM	1SET
6	55" All-in-One Monitor		WDM	1SET
7	Suspended Lead Protective Screen (replace the 12th item of the standard configuration)	Pb0.5 (Including shadowless lamp)	WDM	1SET

2. Technical Specifications:

System Standard Configuration

Part Name	System Description	
Flat Panel Detector	Model: Type: Image Size: Element matrix: Pixel Size: Gray Scale: Speed of acquisition: DQE(0): Spatial Resolution:	Paxscan 4030CB a-Si / CsI, monoblock 397mm × 298mm 2048×1536 194µm 16bit 30fps, 15fps, 7.5fps, 3.7fps, 2fps, 1fps, rate programmable >77% 2.58lp/mm
High Frequency Generator	Model: Maximum Power: Invert Frequency: Continuous Fluoroscopy: Pulse Fluoroscopy: kV Range: mA Range: Exposure Time: mAs: Power Supply:	IN-GE 100kW 200kHz 0.5~20mA 5~60mA 40~125kV 10~1000mA 1ms~6.3s 0.5mAs~1000mAs 3-phase 380VAC
X-Ray Tube Assembly	VARIAN: Focal Spot: Focal Spot Power: Maximum Anode Storage: Anode Rotation Speed: Anode Angle: Cooling Model:	G-1582 0.3mm/1.0mm 18/112kW 1500kHU 10800rpm (Max) 10° Air cooling + Oil cooling
Monitor Hanger	Quadruple Range of Movement:	Horizontal 1560mm, Rotation 120°, Elevating distance 300mm
Collimator	Model: Vision Type: Mode of Adjustment: Filtration:	IN-CO square, circular Electric / Manual / Automatic 0-0.3mm Cu filtration adjustable

<p>C-Arm and Cathlab-table Systems</p>	<p>C-Arm Model: Inner Diameter: Motion control: Rotation movement: Sliding movement: SID: L-Arm Rotation movement: DSA Rotation movement: DSA Stepper movement: 3D-DSA: C-arm reset: CPR position: Position memory quantity: Impact protection: Cath-table Model: Size of table-top: Material of table-top: Longitudinal movement: Lateral movement: Elevating distance of table-top: Railway movement: Table side control box: Weight capacity: Real-time tracking stepping angiography and stepping DSA (optional): Step coverage:</p>	<p>CB-4 1326mm, External diameter: 1526mm Electric -105° ~ + 115°, Speed: 20°/s -56° ~ + 50°, Speed: 15°/s 840mm ~ 1180mm, Speed: 100mm/s -95° ~ + 95°; Speed: 5°/s -105° ~ + 115°; Speed: 50°/s step distance 230mm 200° 5.5s Manual, Motorised The surface of table move to foot side 99 Capacitive Sensing + 3D Software Forecast GC-2 3080mm×680mm×45mm; ternary table-top; 250mm, 440mm, 680mm Carbon fiber composite board 1160mm; 330mm 790mm~1120mm Longitudinal 790mm Control of Cath-table movement, C-Arm and L-Arm movement, Collimator control, Image playback control, SID control 200kg Step distance: 230mm; Longitudinal 1300mm (travel range more than 900mm)</p>
<p>Digital Imaging System</p>	<p>Model: Hardware Configuration: CPU: Memory: Hard Disk: CD-ROM: System Interfaces: Monitor: Operating system: Software Configuration:</p>	<p>Invaray IN-IS Image Acquisition Workstation Intel Xeon ≥2.0 GHz (6Core) 16GB 1TB DVDRW USB, standard RS232, LPT, 100MB network interface, DVI/VGA, Raid10 19"LCD 19" Monochrome Medical LCD resolution ratio 1280 × 1024, Gray scale 1024 Windows7, 64bits Invaray EXPLOITER</p>

	<p>Image Acquisition:</p> <p>Field of acquisition: 40×30cm, 30×30cm, 22.5×22.5cm, 17.5×17.5cm, 15×15cm</p> <p>Acquisition matrix and speed of fluoroscopy: 1024×768 30FPS/15FPS/ 7.5FPS/ 3.7FPS/ 2FPS/ 1FPS</p> <p>Acquisition matrix and speed of CINE: 1024 ×768, 30FPS/15FPS</p> <p>Acquisition matrix and speed of DSA: 2048 × 1536, 7.5FPS~1FPS Programmable Rate</p> <p>Acquisition matrix and speed of spot film: 2048 × 1536, 7.5FPS~1FPS Programmable Rate</p> <p>Fluoroscopy Loop Storage (FLS), Real-time Auto-Shutter Function (ASF), Virtual Collimator, ROADMAP function</p> <p>Vascular Road Track (VRT), Vascular Accumulative Tracer Roadmap Technique (VATRT), DSA Self-subtraction Processing Technique (SPT)</p> <p>Region of Interest (ROI) Auto Elastic Optimized Registration Technique (AEORT), Auto Vascular Border Distinguish (AVBD) and measurement.</p> <p>High pressure syringe synchronous control with image</p> <p>Rotational Angiography software package (optional)</p> <p>Stepping Angiography software package (optional)</p> <p>3D-DSA software package (optional)</p>
	<p>Imaging Processing:</p> <p>Noise reduction: 4 level real-time noise reduction (fluoroscopy, Cine)</p> <p>Image Enhancement: 4 level real-time image enhancement (Spot, DSA)</p> <p>Geometrical transformation (M/F/R)</p> <p>Grayscale adjustment (W/L,B/W)</p> <p>Automatic Dose Control based on image quality</p> <p>Dose Management based on radiation safety: Kerma/rate display</p>
	<p>Image Review:</p> <p>Support continuous or single frame review</p> <p>Real-time playback of different acquisition rate</p> <p>Adjustment of image review mode</p> <ul style="list-style-type: none"> *Edge enhancement *Left-Right and Up-Down image flip *Black and white reverse *DSA playback rate control: 0~30fps *Multi-image display and multi-group image display: 1x1, 2x2, 3x3, 4x4 <p>Image zooming and roaming: Image zoom in/out through the mouse roller control</p> <p>Roaming support any direction of movement</p> <p>Mouse roller control of playback: support single frame playback only</p> <p>Patient data management: Patient information list</p> <p>New, edit, delete, search and lock patient information</p>

UPS	<p>Image storage and export: Real-time storage, important patients' information protection. Images can be exported in the Windows compatible format (AVI, BMP, JPG/DICOM).</p> <p>Image information editor: Hospital name, patient ID, patient name, patient sex, patient age, patient X-ray image number, operating technician, surgery doctor, prescription doctor, inspection date, Series date, Sequence date, Series time, Sequence time, Sequence name, image width, Image height, acquisition type, acquisition rate, SID, mAS, mA, kV, C-arm angle, L-arm angle, C-arm rotation angel, window width, window level, enhance level, edge enhancement, the current frame number / the total number of frames, mark of image sent.</p> <p>Image measurement and annotation: Arrows annotation, text annotation, measuring annotation, the name annotation of image, Sequence name annotation, automatic annotation in sequence of program acquisition, image calibration, image length, area and angle measurement, image vascular stenosis measurement.</p> <p>DICOM functions: Archive Full support of DICOM storage, transmission, printing and CD/DVD burning For imaging workstation only, 2KVA, 1600W.</p>
Area Dosimeter	Real-time measure the Dose Area Product (DAP) and Dose Area Product
	Rate (DAPR).

Optional:

Part Name	System Description
3D Reconstruction Workstation	<p>Hardware Configuration: CPU: Intel Core 2 Duo ≥2.6GHz Graphic Memory: 2GB Hard disk: ≥320GB, CD-ROM: DVD RW System Interfaces: USB, standard RS232, LPT, 100MB network interface, DVI/VGA output interface Monitor: 19" Color Monitor resolution 1280×1024 Software Configuration: WD-3D software package Realize 3D angiography reconstruction</p>
Diagnosis Workstation	<p>Hardware Configuration: CPU: Intel Core 2 Duo ≥2.6GHz Graphic Memory: 2GB Hard disk: ≥320GB, CD-ROM: DVD RW System Interfaces: USB, standard RS232, LPT, 100MB network interface, DVI/VGA output interface</p> <p>Monitor: 19" Monochrome Medical LCD resolution 1280×1024, Gray scale 1024</p>

	<p>Operating system: Windows 7</p> <p>Software Configuration: WD-REPORT</p> <p>Graphic report: directly write diagnosis report, import images, and output to paper printing</p> <p>The report template: provide common template of lesions image studies and descriptions, user-defined template.</p>
Advanced Diagnostic Workstation	<p>Hardware Configuration:</p> <p>CPU: Intel Xeon (4 core) ≥3.0GHz</p> <p>Graphic Memory: 8GB Hard disk: ≥500GB, CD-ROM: DVD RW</p> <p>System Interfaces: USB, standard RS232, LPT, 100MB network interface, DVI/VGA output interface</p> <p>Monitor: 19" Color Monitor resolution 1280×1024</p> <p>Software Configuration: CBCT reconstruction and visual software</p> <p>3D reconstruction, graphic report</p> <p>Brain</p>
Rotating and stepping system	<p>Rotational DSA: For cerebral vessels, resolution ratio 2048*1536, two sequences.</p> <p>C-arm rotation speed, acquisition frame rate can be configured.</p> <p>Stepping DSA: For lower limb vessels, resolution ratio 2048*1536, two sequences.</p> <p>Step distance can be configured.</p>
Compartment operation console	<p>The console to control the C-arm movement in control room.</p>
55" All-in-One Monitor	<p>Monitor: 55", 10 bit, 1074M color LED</p> <p>Brightness (Max): ≥620 cd/m², contrast (typical): 1400:1</p> <p>Visual angle (typical): 178° (CR ≥10)</p> <p>Pixel pitch: 0.315mm(H) x 0.315mm(V)</p> <p>Resolution: 3840 x 2160</p> <p>Display area: 1210mm(H) x 680mm(V)</p> <p>Power supply: 100-240VAC, +/-10%, 50/60Hz +/-3%</p> <p>Power consumption: Max. 300W</p> <p>Input port: DVI-D, Display port, VGA</p> <p>Environment temperature: 5°C - 35°C, humidity: 15%-85% non-condensing</p> <p>Storage temperature: -20°C - 50°C, humidity: 10%-90% non-condensing</p> <p>Certified by: UL60601, FCC, CE, CCC</p>

FLOOR MODEL COMPARISON	SIEMENS ARTIS ONE	GE IGS 323	PHILIPS FD20	CGO-2100	REMARKS	
C-arm gantry						
Type	C-arm, floor-to- ceiling shaft, head-landing only	C-arm, floor- mounted, three axis, head or side mounting only	Floor-mounted, three-axis	C-arm, Floor-mounted, five-axis, L-arm with lateral movement and isocenter	<p>The CGO-2100 is currently the industry's high-end shaft floor-to-ceiling rack design model, with maximum coverage and maximum rotation speed models. Clinical use is more flexible and ensures that the output image is always in a vertical state.</p>	
C-arm rotation angle (when the C-ARM is on patient's head side)	± 130° LAO/RAO and + 55°/ 45° cran/caud	LAO/RAO: -105° / +117° ; cran/caud: -50°/ +45°	LAO/RAO: -120°/+185°; cran/caud: -90° /+90°;	LAO/RAO: -105°~+115° cran/caud: -56°~+50°		
C-arm rotation angle (when the C-ARM is on patient's lateral deposit)	± 45° LAO/RAO and + 15/ 45 cran/caud when the c-arm rotates to 35° of left side.	LAO/RAO -50°/ +45°; CRAN/CAUD +55°/ -55°	LAO/RAO: -90° / +90°; cran/caud: -185° / +120°	L-arm rotation range: -95°~ +95°		
C-arm Maximum Rotation stepping	45°/s	40°/s	Craneal: 55°/ s Lateral: 30°/ s	50°/s		
Focus-Isocenter point Distance	75 cm	70.5 cm	81 cm			
Source-image Distance (SID)	90 - 120 cm, up-down speed 9cm/s	95 - 119 cm	89.5-119.5	84cm~118cm		
Isocenter height	106 cm	107 cm	113.5 cm	120cm Depth, Reduce the unnecessary risk from mechanic positioning during the operation		
Rotative FPD	Yes, standard option/ motorized, rotatable in 0- 90°	No	Yes	Rotative FPD		
C-arm positioning reserved	50 programmable + 5 programmed positioning	Optional: 72 positionings (9 user's / 8 Gantry's)	Stanadr: 2 positioning, Optional - 100 positioning	Standard: 99 positioning		
Anti-collision protection	Yes	Yes	Yes	Capacitive Sensing + 3D simulation Forecast		
C-arm automatic movement to reference angle	Yes, Optional-Automap	Yes, Optional In-Room Browser	Yes, Optional	Yes		
CATH TABLE	SIEMENS ARTIS ONE	GE IGS 323	PHILIPS FD20	CGO-2100		
Table length and width	280cm, 45cm	300cm, 46cm	319cm, 50cm	308cm, 45cm		<p>CGO-2100 uses the floor-rail and floating cath-table, with maximum longitudinal movement, try to avoid moving patients can be multi-directional examination.</p>
Table height	77-110cm	78-108cm	78.9-106.9cm	79-112cm		
Longitudinal movement	125 cm	170 cm	120cm	180cm		
Movement angle	+/- 120 °	+/- 180 °	Optional	Floor-mounted equipped, 80cm longitudinal movement		
Weight capacity	250 kg + 100 kg CPR + 40 kg optional	200 kg, the table needs to be pulled back when rescuing the patient	250 kg + 50 kg CPR	250 kg + 135 kg CPR		

GENERATOR	SIEMENS ARTIS ONE	GE IGS 323	PHILIPS FD20	CGO-2100	
Power	80 kW?	80 kW	100kw	100 kW	
Max Tube Voltage	125 kV	125 kV	125 kV	125 kV	
Max Tube Current	1000mA	1000mA	1250mA	1000mA	
Fluoroscopy voltage and current	40 to 125 kV; Small focus: Max 250mA; Micro focus: Max 68MA;	?	40to 125KV; Current range: 0.1 to 30mA	40 to 125KV; Pulse fluoroscopy: 5-60mA Continued fluoroscopy: 0.5- 20mA	The maximum current matches the generator voltage, the current is too small, and limiting the output voltage will not meet the perspective image quality needs of organs such as the heart.
Max Power during continued fluoroscopy	10 min: 4000 W; 30 min: 3000 W; >30 min: 2500 W	1500 W	2400 W for 30 min; 2000 W for 8 hours	>30 min: 2500 W	
X-RAY TUBE / COLLIMATOR	SIEMENS ARTIS ONE	GE IGS 323	PHILIPS FD20	CGO-2100	
Focus	0.3/0.6 *0.6/ 1.0mm	0.3, 0.6 and 1.0 mm	0.4 /0.7mm	0.3/1.0mm	
Anode capacity	3.375 Mhu	3.7 MHu	2.4 MHu	1.5 MHu	
Generator Pulse Optimization Technology	Yes	No	No	Yes	Stable ray hardness for high quality image quality
Cu Filter auto-filtering	5 different thickness Cu filters, automatically implanted according to the conditions of the object	3 level, automatic	3 level, fixed settings	3 level, automatic	
DETECTOR	SIEMENS ARTIS ONE	GE IGS 323	PHILIPS FD20	CGO-2100	
Max. vision field	30x30cm	30x30 cm	30x40cm	30x40cm	Platform detector is an important part of the hardware. Wandong uses a 4030cm flat panel detector, to meet all clinical examination of the whole body. This detector can be rotated. The lower extremity and wide area can be used for maximum area imaging, reducing the amount of radiation brought by multiple exposures.
Min. vision field	8x8cm	11x11cm	10.5x10.5cm	5 field, min 15x15cm	
Digital grey scale	14 bit	14 bit	14 bit	16 bit	
Post-process grey scale	12 bit	12 bit	12 bit	16 bit	
Digital export	1024 x 1024 Pixel @ 12 bit	1024 x 1024 @ 12 bit	1024 x 1024 @ 12 bit	1024 x 1024 @ 16 bit	
Pixel size	154 μm x 154 μm	200 μm x 200 μm	154 μm x 154 μm	194 μm x 194 μm	
Max.resolution	3.25 Lp / mm	2.5 Lp/mm	3.25 Lp / mm	2.58Lp/mm	
DQE	74%	75%	74%	>70%	
Shortcuts on detector	Yes, with flat plate up and down, flat rotation, field of view selection, C-arm angle and other operating shortcuts	Yes, flat up-down movement	Yes, flat up-down movement	Yes, flat up-down and rotation movement	More shortcuts to facilitate doctors in the bedside operation, saving time for surgery.
MONITOR	SIEMENS ARTIS ONE	GE IGS 323	PHILIPS FD20	CGO-2100	
Technology	TFT flat monitor	LCD monitor	LCD monitor	Medical LCD monitor	The use of the highest brightness in a professional medical display, ensures that surgeons in the room can obtain the best visual effects of the image.
Monitor in Control room	1 set, 19 inch	1 set, 18 inch	1 set, 18 inch	2 sets, 19 inch	
Max brightness in control room	1000cd/m2	600cd/m2	600cd/m2	1M Medical Monitor	
Monitor in Operation room	2 sets, 19 inch	2 sets, 18 inch	2 sets, 18 inch	2 sets, 19 inch	
Max brightness in operation room	1000cd/m2	600cd/m2	600cd/m2	1M Medical Monitor	

DIGITAL IMAGE SYSTEM	SIEMENS ARTIS ONE	GE IGS 323	PHILIPS FD20	CGO-2100	
Fast acquisition for cardio	7.5/10/15/30pps, (1K)	15 / 30 pps (1k-matrix)	15 / 30 pps (1k-matrix)	7.5/10/15/30pps, (1K)	
Digital acquisition	0.5-7.5 fps	0.5-7.5 fps	0.5-6 fps	0.5-7.5 fps	
Image grey scale	12bit	12bit	12bit	16bit	
Pulsed fluoroscopy	9 levels, 0.5/1.0/2.0/3.0/4.0 /7.5/10/15/30pps	10/15/30pps	3.75/7.5/15/30pps	1-30pps programmable	A variety of perspective frequencies are adjustable, providing the right perspective frequency under different conditions, ensuring image quality while reducing unnecessary exposure.
Perspective image sequence storage	Yes,1020 frames	Yes, last 300 frames	last 20s images	Yes, personalized time for reservation	Dynamic perspective image storage function, effectively reduce X-ray dose
Flat automatic rotary serve	Collimator auto-tracking	No	No	Detector auto-tracking	Always ensure that the image on the monitor is vertical, regardless of the rack position
Two-way transmission of optical images and host systems, two-way storage	Yes	No	No	Yes	This feature allows doctors to record patients in other hospitals for the operation to be recorded on their equipment for easy diagnosis.
SPETIAL FUNCTIONS	SIEMENS ARTIS ONE	GE IGS 323	PHILIPS FD20	CGO-2100	
Real-time rotation DSA	Yes	Yes	Yes	Yes	
Analog CT function	DynaCT	Innova CT	Xper CT	Advanced Workstation	
LOW-DOSE TECHNOLOGY	SIEMENS ARTIS ONE	GE IGS 323	PHILIPS FD20	CGO-2100	
Low-dose platform	Care & Clear Platform	No independent low-dose platform	Clarity IQ platform as optional	Operation acquisition procedure setting for different surgical modality	
Automatic exposure parameter settings without testing exposure	Yes, Carematic	Yes, AutoEx	Yes	Invaray 3.0 internal exposure process acquisition setting	
Low-dose acquisition	Yes, equipped with low-dose acquisition footbreak	No, normal-dose acquisition	No, normal-dose acquisition	Yes	
Automaticly set and insert the filter	Yes, Carefilter	Yes	Manually insert	Yes	
Pulsed fluoroscopy rate	9 levels: 0.5, 1.0, 2.0, 3.0, 4.0, 6.0, 7.5, 15, 30fps	7.5, 15, 30 fps	3.75, 7.5, 15, 30 fps	1-30fps, programmable	Wandong adopts the programmable perspective pulse frequency, can adjust the dose more flexibly in the clinical use process, and ensure the image quality to achieve a more appropriate dose, so as to achieve the goal of saving the dose.
Dose indicator	Yes, Carewatch	Optional	Yes	Yes	



We have over 20 years experience of working in the NHS supporting the delivery of products and healthcare services. We are committed to supporting the NHS by delivering products that prioritise patient safety at the best value without compromising quality, safety and service.

Our products go through extensive quality control procedures at each step of the manufacturing, assembly, packing and shipping process following strict sterilisation, hygiene, technical and quality compliance procedures. These are verified regularly and independently to ensure consistent results and quality targets. Spot checking and testing is also carried out throughout the manufacturing process and on finished products.

Supplies available to purchase through NHS Supply Chain or get in touch to buy direct. Discounts and rebates are available.

ALXR IS A PROVIDER ON THE FOLLOWING
NHS SUPPLY CHAIN FRAMEWORK AGREEMENTS

Diathermy Consumables

Single Use Tourniquet

**Infusion Pumps, Administration
Sets And Associated Products**

**Imaging, Radiotherapy,
Endoscopy Equipment, Ancillary
Devices, Associated Goods
and Services**

**Single Use PPE and Medical
Protective Consumables**

Office and Outdoor Furniture

ALXR[®]
HEALTHCARE > SUPPLY CHAIN

ALXR Limited
109 Coleman Road
Leicester, LE5 4LE
United Kingdom

info@alxr.co
+44 (0) 116 246 0733

