

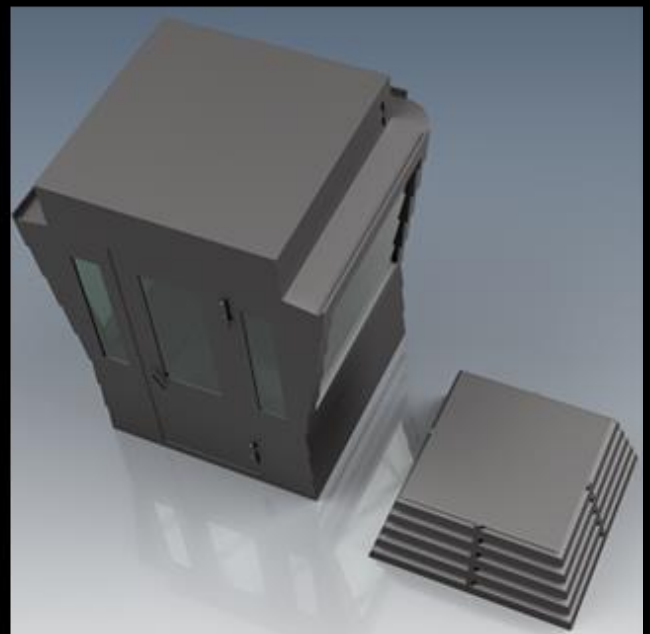
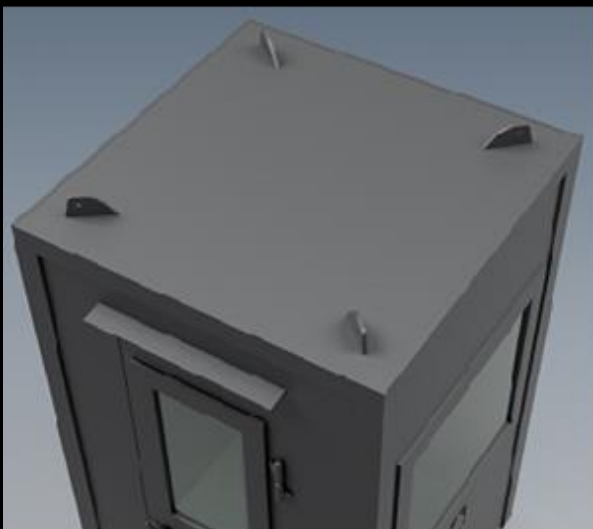
# Plug & Play Bulletproof Guard Shacks



**ASPIS**



**TITAN**



<b>Ballistic Protection:</b>	Roof + 4 lateral sides.
<b>US Certifications:</b>	NIJ 0108.08 LEVEL IV+.
<b>EU Certifications:</b>	FB7+ EN1522 EN1523. BR7+ EN1063.
<b>Extra shootings (+):</b>	UL752 Level 10 (Official test report Body & Glass).
	<b>Openings:</b>
<b>ASPIS</b>	<b>Windows:</b> 100cm. x 80cm. (W x H) - Door Window: 40cm. x80cm. (W x H)
<b>TITAN</b>	<b>Windows:</b> 120cm. x 105cm. (W x H) - Door Window: 41.5cm. x 104cm. (W x H)
<b>One each side</b>	- Door Side Windows: 19cm. x 104cm. (W x H).
<b>Standard equipment:</b>	
Working bench:	1.
Locks:	Security lock.
Cables:	Electricity/Ethernet/Phone.
Sockets:	2 (electricity) 1 (Ethernet )1 (phone line).
Fuse box:	1 (including all required fuses for A/C, Lights, Sockets).
Lights:	1 (ceiling).
HVAC:	System must be purchased locally.
HVAC preparations:	Pre-Wired, Fuse, Line Set Opening.
Lifting points:	4 on top of construction.
Color:	Upon Request.
<b>Upon Request:</b>	
<ul style="list-style-type: none"> <li>• Intercom Kit.</li> <li>• Gun Ports.</li> <li>• Mirror effected glasses (one way).</li> </ul>	<ul style="list-style-type: none"> <li>• Floor bulletproof protection.</li> <li>• Forklift Pockets.</li> <li>• External flood lights Led 100W or HQI250W.</li> </ul>
<b>Plug &amp; Play Status:</b>	Ready to be connected to public networks (Electricity / Internet / Phone).

Product Description	External Dimensions			Kg.	Transportation Details
	CM.				40 feet High Cube Maritime Container
Series	Width	Length	Height	Weight	Items
<b>ASPIS</b>	150	150	245	2820	6
<b>TITAN</b>	200	177	244/304	3350	5