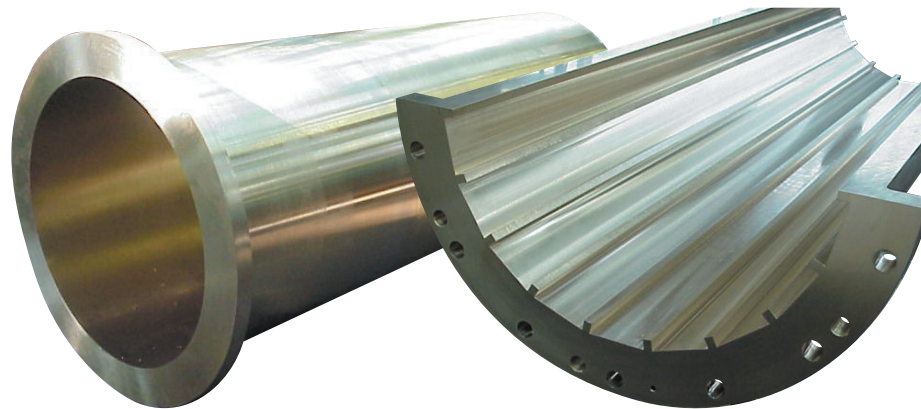




SHIP BUILDING INDUSTRY

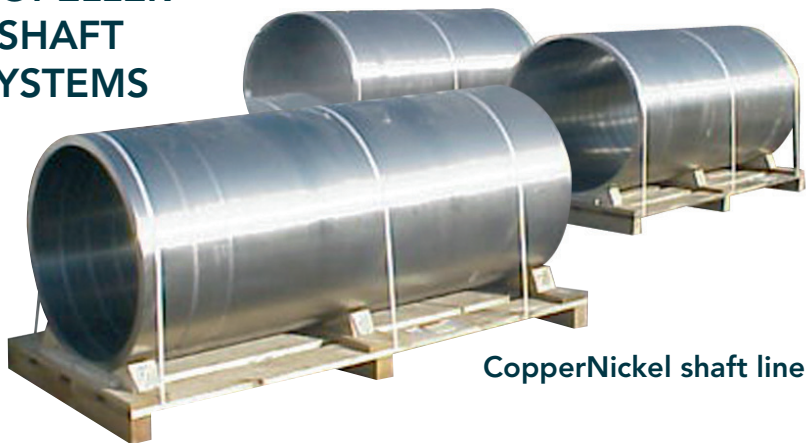
Serving your Industry with non ferrous
and stainless steel Centrifugal Castings

Split or unsplit fully machined carriers
for water lubricated bearings

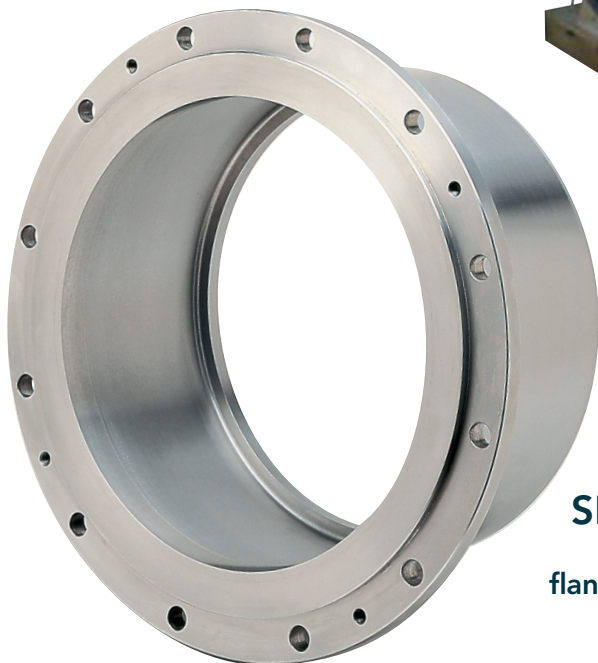


LG4 shaft liners

PROPELLER
SHAFT
SYSTEMS



CopperNickel shaft liners



SHAFT SEALS
Stainless steel
flanged components

RUDDER STOCK
SYSTEMS
Stainless steel liners



Please contact us for more specific products!
E.mail : commercial@lbi.fr - Web site : <http://www.lbi.fr>

CENTRIFUGAL CASTINGS FOR SHIP BUILDING INDUSTRY

Materials

- Stainless steels
- Duplex
- Bronze
- Leaded gunmetal
- Nickel aluminium bronze
- Copper nickel 70 - 30

Condition

- Proof machined
- Finish machined

Advantages of centrifugal casting

- Improved corrosion resistance
- Dimensional stability
- Excellent machinability
- High mechanical properties

Main approvals

- ISO 9001 
EN ISO 9001:2000
Certificate N°: 71 100 8 006
- Germanischer Lloyds
- Lloyds Register of Shipping
- U.K. Ministry of Defence (N)



LBI - 26, rue de la République
B.P. 70090 - 57360 Amnéville - FRANCE
Telephone +33 (0) 3 87 71 15 11
Fax +33 (0) 3 87 71 14 96
E.mail : commercial@lbi.fr
Web site : <http://www.lbi.fr>

