

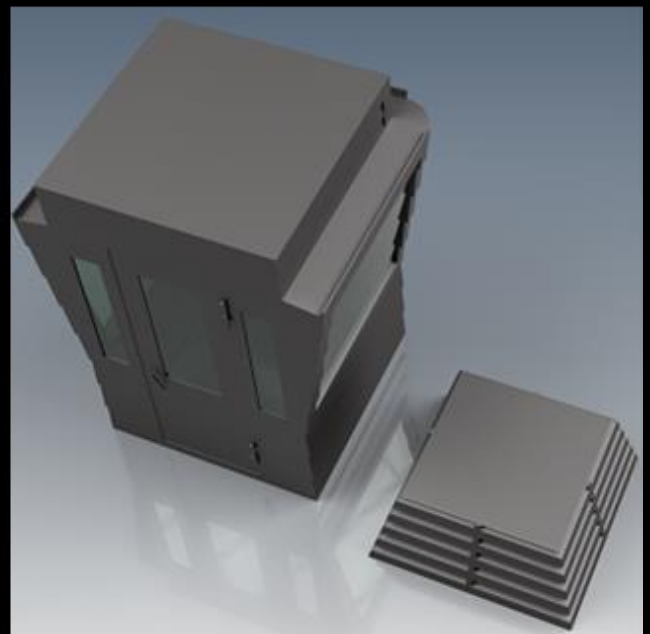
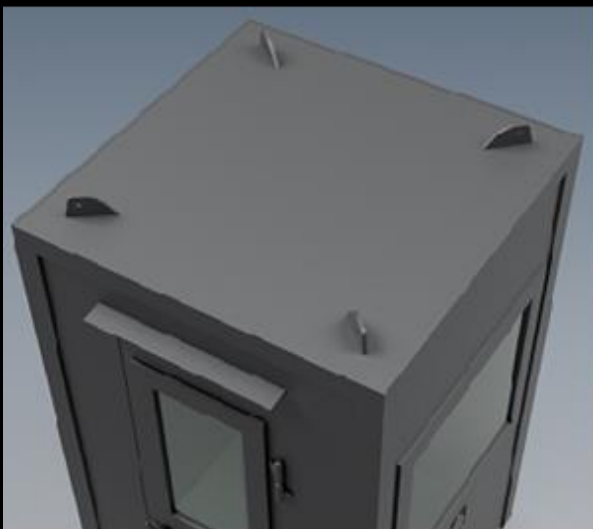
Plug & Play Bulletproof Guard Shacks



ASPIS



TITAN



Ballistic Protection:	Roof + 4 lateral sides.
US Certifications:	NIJ 0108.08 LEVEL IV+.
EU Certifications:	FB7+ EN1522 EN1523. BR7+ EN1063.
Extra shootings (+):	UL752 Level 10 (Official test report Body & Glass).
	Openings:
ASPIS	Windows: 3.28ft. x 2.62ft. (W x H) - Door Window: 1.31ft. x 2.62ft. (W x H)
TITAN	Windows: 3.93ft. x 3.44ft. (W x H) - Door Window: 41.5ft. x 3.41ft. (W x H)
One each side	- Door Side Windows: 0.62ft. x 3.41ft. (W x H).
Standard equipment:	
Working bench:	1.
Locks:	Security lock.
Cables:	Electricity/Ethernet/Phone.
Sockets:	2 (electricity) 1 (Ethernet)1 (phone line).
Fuse box:	1 (including all required fuses for A/C, Lights, Sockets).
Lights:	1 (ceiling).
HVAC:	System must be purchased locally.
HVAC preparations:	Pre-Wired, Fuse, Line Set Opening.
Lifting points:	4 on top of construction.
Color:	Upon Request.
Upon Request:	
<ul style="list-style-type: none"> • Intercom Kit. • Gun Ports. • Mirror effected glasses (one way). 	<ul style="list-style-type: none"> • Floor bulletproof protection. • Forklift Pockets. • External flood lights Led 100W or HQI250W.
Plug & Play Status:	Ready to be connected to public networks (Electricity / Internet / Phone).

Product Description	External Dimensions			Lbs.	Transportation Details
	Feet.				40 feet High Cube Maritime Container
Series	Width	Length	Height	Weight	Items
ASPIS	4.92	4.92	8	6217	6
TITAN	6.56	5.80	8/9.97	7385	5