



深圳市普星五金科技有限公司

地址：深圳市龙岗区宝龙街道龙新社区兰一村兰水路16号
电话：0755-84823653
手机：13923771244/13724283563/13501575461
邮箱：zhang@pshardware.com
网址：<http://www.promostar-hardware.com/>

ShenZhen PromoStar Hardware Co.,ltd

Add:No.16 Lanshui Road,Longxin Area,Baolong Street,LongGang District,ShenZhen China
Tel:0086 755-84823653
Mob:13923771244/13724283563/13501575461
E-mail: sales@pshardware.com office@pshardware.com
Web:<https://www.pshardware.com>

德国

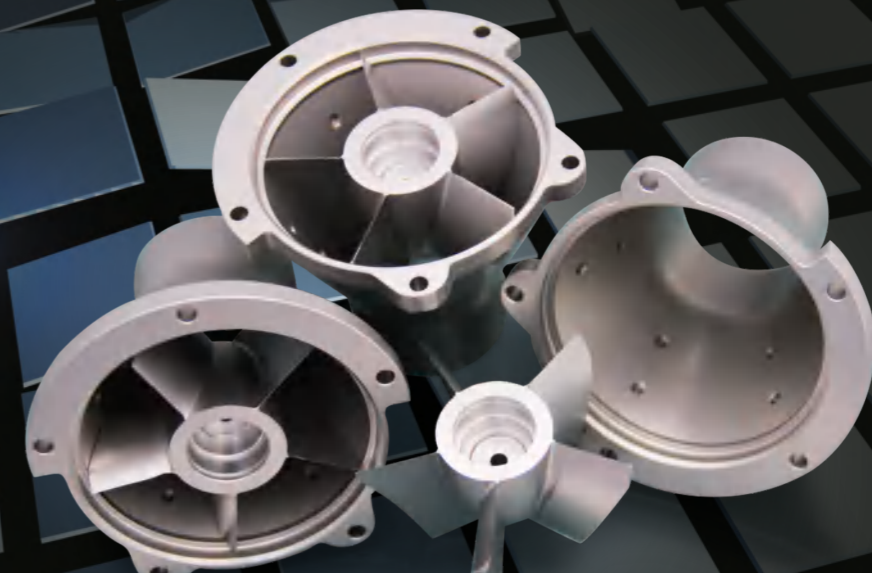
Germany

Address:Hildegundisstr.10 40668 Meerbusch Germany
TEL:+49-(0) 2150 9099920 Mobile:+49 173 6989519
Email:sales@pshardware.com
Web:<https://www.pshardware.de>

专注于CNC数控车铣加工 Focus on CNC Machining Parts

高品质
High Quality

高精度
High Precision



深圳普星五金科技有限公司
SHENZHEN PROMOSTAR HARDWARE CO.,LTD

COMPANY PROFILE

公司简介

深圳市普星五金科技有限公司成立于2004年，是一家服务于全球领先的精密五金产品加工商，公司已通过ISO9001:2015认证，公司主营业务为数控车，铣五金加工产品，精密件加工（CNC机加工），应用于光学、工业、汽车、医疗、新能源、运动设备，机械设备等领域。拥有着数十年的丰富经验及先进的设备。目前公司拥有CNC数控车床、CNC数控铣床（四轴、五轴）、CNC数控车铣复合、自动车床、等设备。公司目前员工有50-60人，业务遍及欧洲，美国，东南亚等国家。

为了更好服务于客户，公司于2010年与HONGZHI INDUSTRIE GmbH合作在德国成立分公司，拓展欧洲市场，给客户更方便，快捷的服务同时也将国外先进的生产技术，经营理念，市场信息反馈给国内工厂。

公司致力于把高品质的五金产品带入世界每个需要的各行业领域，并在五金产品CNC机加工及设计方面为客户提供有竞争力、安全可信赖的产品、解决方案与服务，与客户开放合作，持续为客户创造价值，激发组织创新。公司坚持围绕客户需求持续创新，加大基础设备及人才投入，厚积薄发，推动五金行业进步。

我们使命 Our Mission

为客户创造价值，推动产业良性发展，促进经济增长，为奋斗者提供舞台！

to create value for customers, promote the sound development of industry, promote economic growth, provide a stage for strivers!

我们的坚持 Our adherence

以奋斗者为本，以客户为中心！
to the striver-oriented, customer-centric!



Shenzhen Promostar Hardware Co., Ltd is a steadily growing company who founded in 2004. As a metalworking company, we offer a full range of CNC Machining Service. Such as CNC Turning, CNC Milling, Laser Cutting, Sheet Metal Machining and Stamping in kinds of material. For example: Titanium, Aluminum, Brass, Bronze, Carbon Steel, Tooling Steel, Stainless steel, POM, Peek, PET & so on.

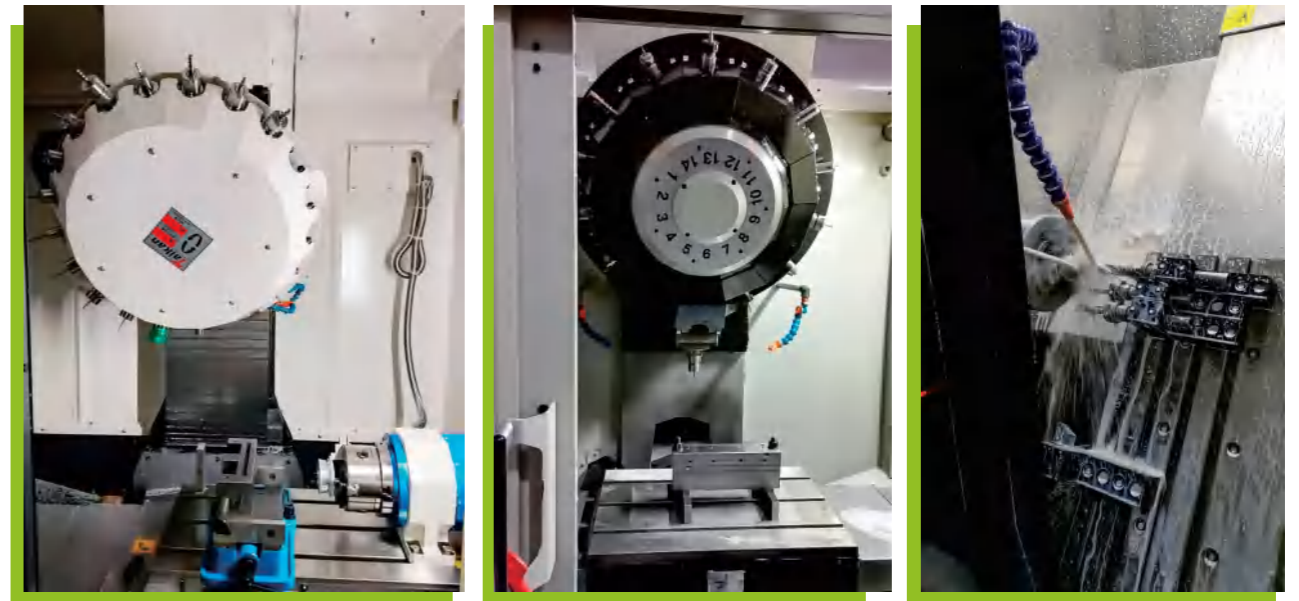
Our factory is located at Shenzhen China covers an area of 3,000 square meters.. Our machines includes a dozen CNC Milling Centers (3-axis and 4-axis), CNC Turning Machines, Automatic Turning Machines, Laser Cutting, Stamping, Welding and Laser Engrave. We can provide the entire development process from R&D, Production, Quality Management, Assembly, Packaging to Shipping.

With our machines and well-trained staff we can guarantee tolerances of +/- 0.002mm. We can comply with the standard certifications ROHS and REACH. We deal not only with Chinese Standard materials but also with International Materials as well. We are ISO9001:2015 certificated.

We will keep investing in Sustainability, Quality Management, Digital Management, and Human Resource. Our Principle is to create value for Customers, Push industrial virtuous circle, prompt the growth of Economic and provide a stage for strivers.

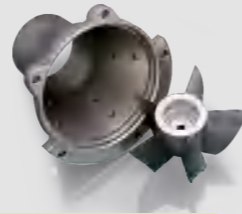
COMPANY WORKSHOP

公司车间



CNC车&铣系列

CNC TURNING & MILLING PARTS



材料: 铝、不锈钢、钛、铁、黄铜、红铜、POM等
Material: Aluminium, Stainless Steel, Titanium, Steel, Brass, Copper, POM and so on.
表面处理: 氧化、发黑、电镀、喷油、喷漆、橡胶手感漆等
Finishes: Anodize, Oxidize, Electric-Plating, Liquid Painting, Rubber Painting etc.
承接数量Capacity: from 1pc-10,000pcs
机器行程Working Size: x: 1-855mm z: 250mm

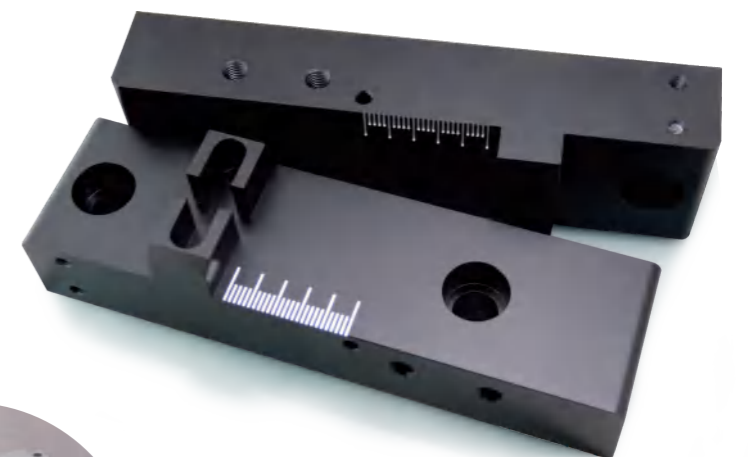


CNC铣床系列

CNC MILLING PARTS



材料: 铝、不锈钢、钛、铁、黄铜、红铜、POM等
Material: Aluminium, Stainless Steel, Titanium, Steel, Brass, Copper, POM and so on.
表面处理: 氧化、发黑、电镀、喷油、喷漆、橡胶手感漆等
Finishes: Anodize, Oxidize, Electric-Plating, Liquid Painting, Rubber Painting etc.
承接数量Capacity: from 1pc-10,000pcs
机器行程Working Size: x: 1-1060mm y: 1-600mm z: 1-600mm



自动车床系列

AUTOMATIC TUNING PARTS

材料: 铝、不锈钢、钛、铁、黄铜、红铜、POM等

Material: Aluminium, Stainless Steel, Titanium, Steel, Brass, Copper, POM and so on.

表面处理: 氧化、发黑、电镀、喷油、喷漆、橡胶手感漆等

Finishes: Anodize, Oxidize, Electric-Plating, Liquid Painting, Rubber Painting etc.

承接数量Capacity: from 1pc-1,000,000pcs

机器行程Working Size: x: 1-90mm y: 1-20mm



冲压系列

STAMPING PARTS

材料: 铝、不锈钢、钛、铁、黄铜、红铜、POM等

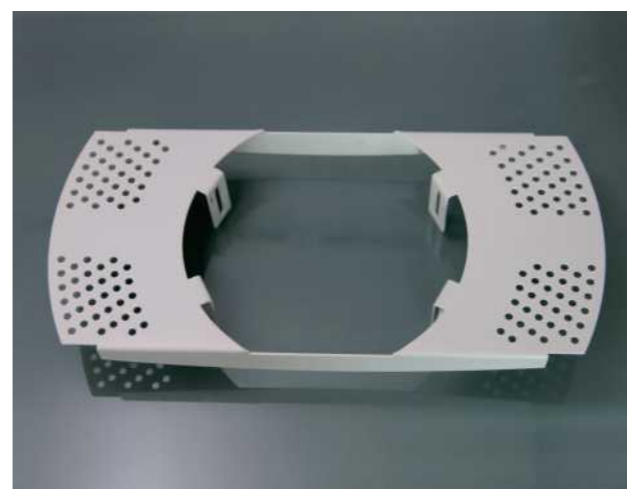
Material: Aluminium, Stainless Steel, Titanium, Steel, Brass, Copper, and so on.

表面处理: 氧化、发黑、电镀、喷油、喷漆、橡胶手感漆等

Finishes: Anodize, Oxidize, Electric-Plating, Liquid Painting, Rubber Painting etc.

承接数量Capacity: from 1000pc-1,000,000pcs

机器行程Working Size: x: from 0.1mm to 5mm



检测设备

DETECTION EQUIPMENT

我们的服务

OUR SERVICE

精细加工 / 品质保证

HIGH PRECISOIN / HIGH QUALITY



加工设备 Equipment

加工中心、数控车床、铣床、车铣复合、线切割、火花机，激光打标机
CNC Milling Machine、CNC Turning Machine、Multiaxes turning milling machine、Tapping Machine、Laser Engrave machine

表面处理 Surface Treatment

阳极氧化、抛光、拉丝、电镀、发黑、喷涂、丝印、热处理...
Anodizing、Polishing、Brushing、Electroplating、Chemical Oxidize、Powder Coating、Paint Spraying、Heat treatment

检测设备 Inspection Equipment

2.5次元影像仪、三丰卡尺、数码千分尺、高度仪、针规、塞规、丝锥、丝规
Coordinate Measuring Machine、Projector、Mitutoyo digital calipers、Digital micrometer、Centre-height gauge、Pin Gauges、Screw gauges

图纸格式 Drawing file

SolidWorks、Pro/ENGINEER、AutoCAD(DXF、DWG)PDF、IGS、STP...

加工材料 Material

不锈钢Steel Stainless: SUS201 SUS303 SUS304 SUS316...
钛合金Titanium: TA1, TA2,TA3, TA4
低碳钢、碳钢Carbon Steel、Mild Steel: 4140 4340Q235 Q345B 20 45...
铜 Brass、Copper、Bronze: HPB63 HPB59 H59 H68 H80 H90 C11000 C3600...
铝合金Aluminum: Al6061、Al6063、Al6082、Al7075...
塑胶Plastic: POM ABS PP PVC PC PEEK...

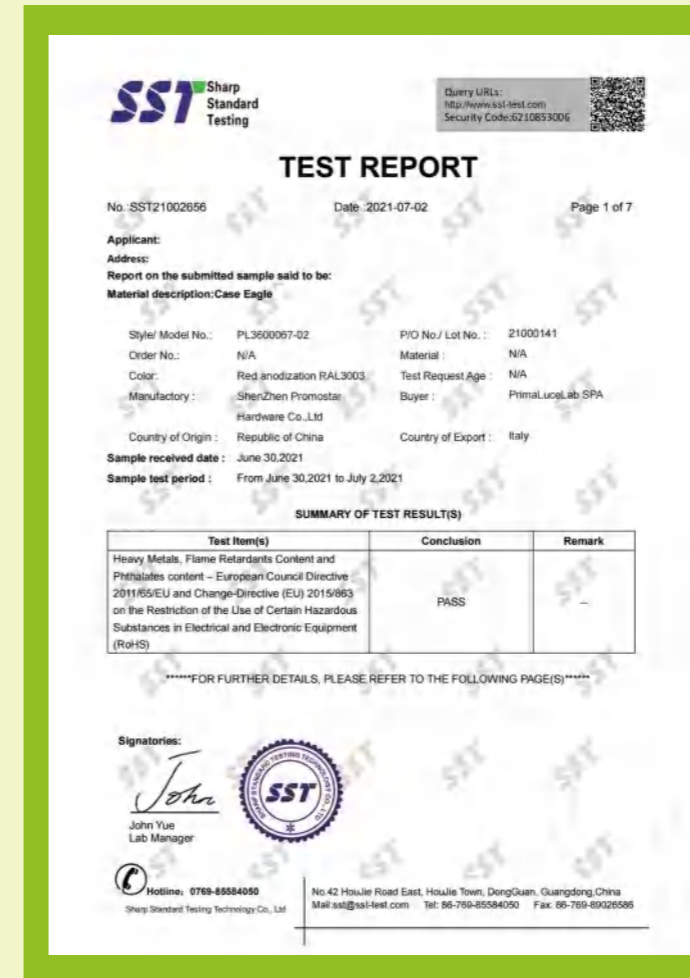
应于范围 Applied Range

应用于光学、工业、汽车、医疗、新能源、运动设备，机械设备等领域
Appying on Optical Parts、Motor Parts、Medical Equipmet Parts、ATM Parts Connector Parts...

产品证书 CERTIFICATIONS



ISO CERTIFICATE



ROHS CERTIFICATE