



— Label & Packaging —

• • • • WORKING WITH 17gsm TISSUE PAPER • • • •



This is the raw paper received from paper supplier. 17gsm tissue paper, disordered edges are the nature of this paper since it is very thin.



2 You can see how both edges are disordered, I mean both the width and the length. This is a new package of tissue paper, size is 70x100cm.



A new package of 30gsm tissue paper.



3 A new package of coated board - 100gsm

Above are examples of other papers used by us. I just want you to see the difference of the papers. It is easy to handle higher grammages comparing to 17gsm.



A bundle of papers (17gsm) on the feeding area of the printing machine. Please notice the straight edges.

For a higher quality of printing and of course operational purposes the paper needs to have straight edges.

Before getting it printed the paper (70x100cm) trimmed 1cm on all four edges, means it is no longer 70x100cm, ideally it is 68x98cm (remember the poor edges, all of them has to be trimmed).

It needs to be cut in to half, too. So final dimension of plain sheet is now 49x68cm.

4



This how the papers look like on the machine after getting printed. Although edges are not bad, they need to be trimmed again for a better quality and easy handling & packaging.

5

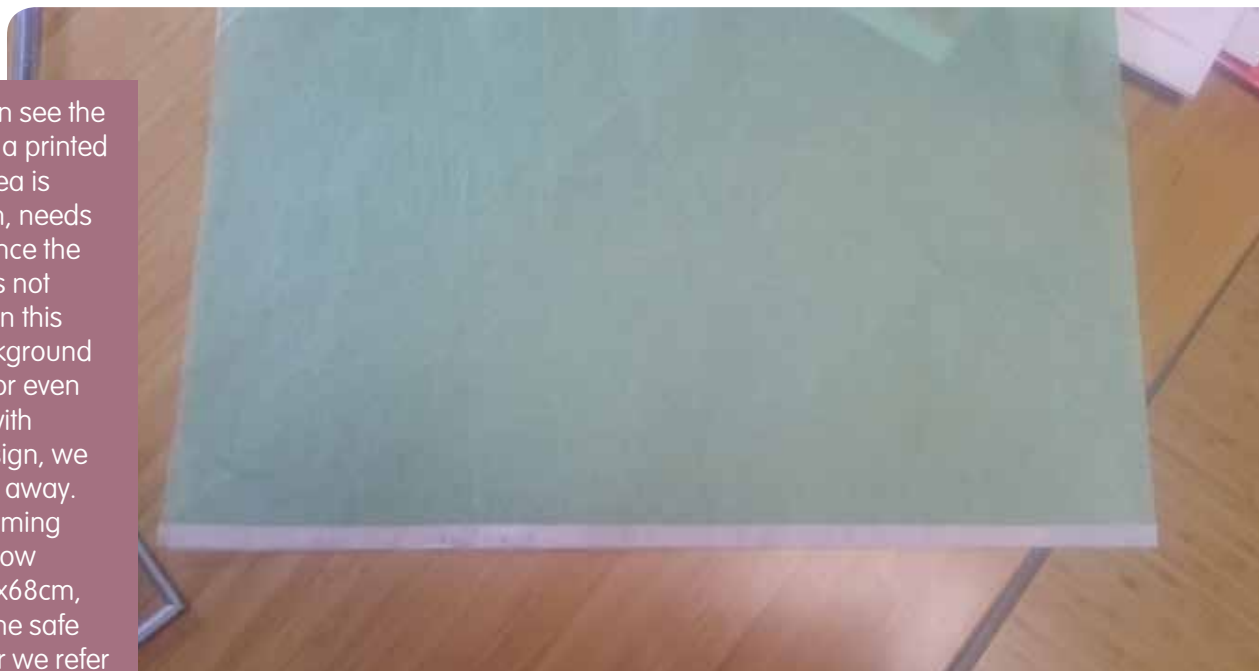


6

After printing and get trimmed this paper is now measured 48x68cm.

7

Above you can see the plain area on a printed paper, this area is like about 1cm, needs to be plain, since the machine does not able to print on this area. For background printed ones or even for the ones with continous design, we need to trim it away. After final trimming the paper is now measured 47x68cm, but to be on the safe side it is better we refer it as 47x67cm.



• • • • CONCLUSION • • • •

17gsm white tissue paper:

1. If there is a continuous design or a background printed artwork, you must refer the printed sheet size 47x67cm,
2. If the artwork has enough space on the edges, you can refer the printed sheet size 48x68cm,
3. If both above options do not meet your expectations, you need exactly a printed sheet measuring 50x70cm, this is also possible, but its price is going to be different than on our price list. This needs to be quoted again.

30gsm white tissue paper:

1. Smallest printed sheet size is 48x68cm, because it is easy to handle comparing to 17gsm, and raw paper comes in order.
2. If you need exactly a printed sheet measuring 50x70cm, this is also possible, but its price is going to be different than on our price list. This needs to be quoted again.