

Prefabricated Relocatable Modular Units.



Modularity:

Vertical alignment: Up to three floors (Ground-floor, 1, 2) **Horizontal alignment:** Expanded as needed



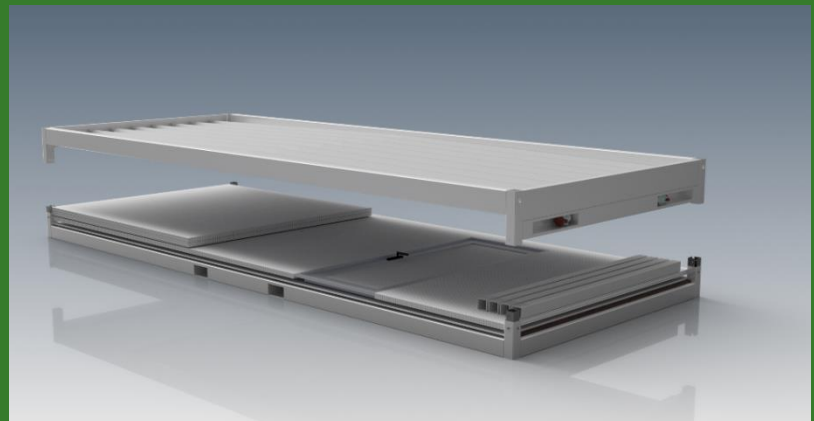
Assembly: (One unit)

- 3 people for 4 hours
- 1 forklift or crane for 30 minutes (Roof lift)

Transportation: Flat pack

Flat pack packaging allows a safe & low-cost transportation.

8 units may fit in a truck or a 40ft HC Maritime container



Assembly & relocation described in fully detailed manual. **No special skills** or tools are required.

Construction.

Floor frame made of galvanized steel section RHS 120X80X3mm, reinforced with cross beams made of galvanized RHS 80X40X2mm every 40cm.

Roof frame made of galvanized steel section RHS 160X80X3mm and 120X80X3mm, reinforced with cross beams made of galvanized RHS 80X40X3mm.

The two frames (roof and floor) are connected together by four columns, of galvanized hollow section RHS 80X80X3mm and 2 columns of galvanized RHS 50X50X3mm. The entire frame is painted and protected with 2 coats of paint.

Walls: Monolithic insulated sandwich panel **50mm thick**, white (RAL 9002).

Roof panels: Monolithic insulated sandwich **roof panel 50mm thick**, white (RAL 9002).

All panels are made of environmentally friendly materials (CFC free).

(Fire retardant panels upon request may vary in price & delivery time)

Floor: OSB boards of 18mm with PVC floor on top of OSB covers the galvanized floor frame of the unit.

- **Handling:** Forklift pockets & Lifting points available by default.
- **Configuration:** Window & Door may be installed on any side of the unit
- **Water collection from roof:** Gutters inside the four columns of the unit.

External dimensions: 235cm X 600cm X 259cm

Internal dimensions: 225cm X 574cm X 230cm

Weight: +/- 1100kg

Electrical equipment:

- 4 Sockets (16amp fuse each)
- Ceiling & front external led lights.

External connection (SCAMETYPE, INDUSTRIAL SOCKET IP68)

Colour:

- Standard colour Ral 9002
- upon request (may vary in price & delivery time)

Production time: 30-40 days.

Minimum order: 8 Flat pack units

