

GEI 
GRATINGS EUROPE INDUSTRY



A TEAM OF PROFESSIONALS EXPERIENCED IN MANUFACTURE RIGHT THROUGH TO IMPLEMENTATION

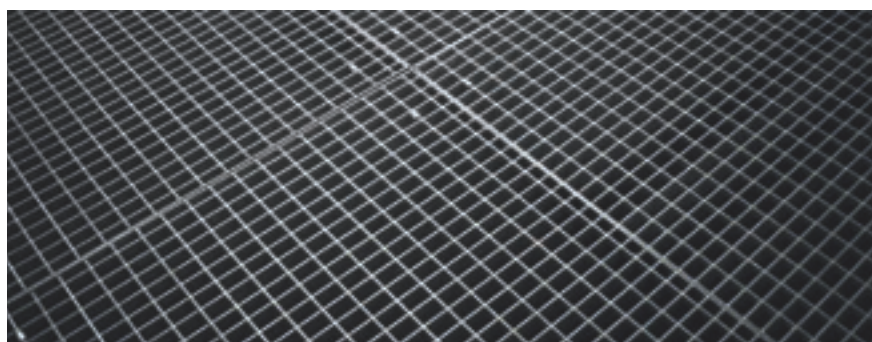
GEI is a guarantee of quality and service, from the design phase right up to the implementation of your projects. Our products are manufactured on high performance production lines using cutting-edge, advanced technology. Our sales department, in collaboration with our design office, examines your requirements, advises you and recommends the best solution for you. After manufacture, all our products undergo dual quality control (quality and quantity) in order to ensure optimum quality. As being a specialist in grating is all about designing for the future, we constantly innovate and support you through every stage of your project. This support is also provided by the logistics service, who makes every effort to guarantee delivery of your orders as soon as possible. **GEI** also guarantees an after-sales service in order to best respond to your claims and ensure your complete satisfaction. **GEI**, a team of professionals at your service.



A BUILT-IN DESIGN OFFICE

Custom manufacture is **GEI**'s speciality. The technicians from our design office, which is a fully integrated part of the company, are always available to handle your technical requests and process your technical drawings and can advise you in collaboration with our sales department. Specially trained in computer-aided design software, our industrial designers can draft calculation notes for you and create a model for your project by finding the best solution to your specific requirements and needs, in both the industrial and architectural sectors.





GEI 
| | | |
GRATINGS EUROPE INDUSTRY



OUR PRODUCTS

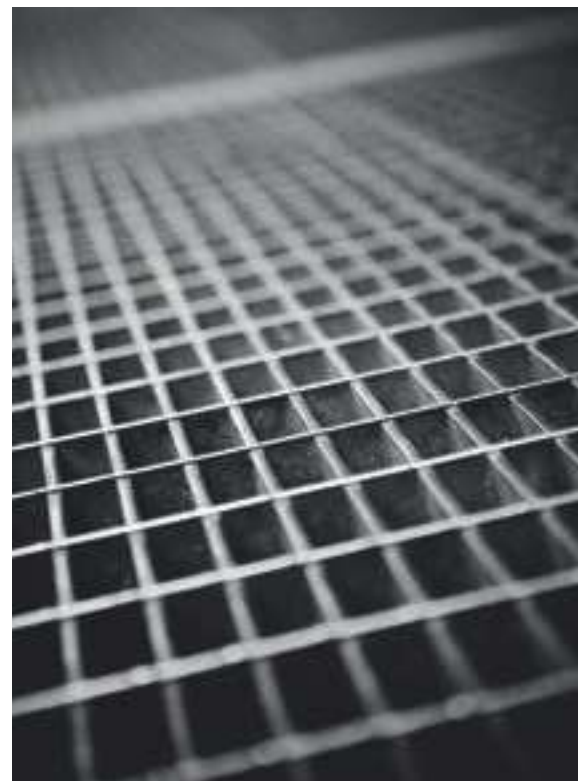
Press-locked grating	6
Press-welded grating	10
Stainless steel and aluminium gratings	14
Louved grating	16
Grating for shelving, fencing and safety railings	18
FRP grating	20
Stair treads	24
Spiral staircases	26
Safety grids	28
Safety grid stair treads	31
Special gratings	32
Fastening systems and accessories	34

TECHNICAL SUPPORT

Technical information	36
Load tables	38

STOCK PROGRAMME

Stock programme	40
-----------------	----





GEI 
GRATINGS EUROPE INDUSTRY



Thanks to a wide variety of designs and the many ways in which it can be used, press-locked grating offers great flexibility in dimension, mesh gauge, and the height and width of the bearer bars.

The materials used also vary, in order to provide the best solution for specific requirements, whether this be for industrial or architectural usage. Press-locked grating is the commonest type of custom-made grating, as the number of options available in terms of shape and structure allow the appearance of the grating to be taken into account during manufacture.



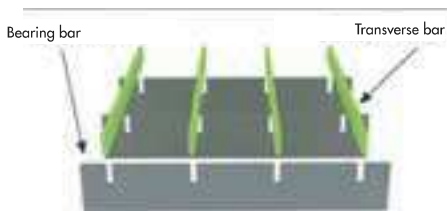


PRESS-LOCKED GRATING

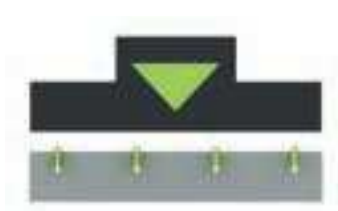


METHOD OF MANUFACTURE

GEI press-locked grating is characterized by transverse, cross bars inserted under high pressure into pre-existing notches in the bearing bars. This grating is produced in "flat" or "T"-shaped sections, welded into place and then optionally undergoes hot-dip galvanizing in accordance with the applicable EN ISO 1461 standards. For situations with an increased risk of slipping, anti-slip grating can be produced, where the upper surface of the bearing bars and/or the transverse bars can be given anti-slip serrations. GEI press-locked grating is typically manufactured from EN 10025 standard S235JR steel, which ensures a consistent production quality. RAL-GZ 638 manufacturing tolerances applied.



STEP 1
BBs and TBs fixed in place



STEP 2
Press-locking



STEP 3
Application of banding bars

GENERAL TECHNICAL SPECIFICATIONS

Press-locked GEI grating uses a precise load table. The dimensions of the bearing bars (BB) and the transverse bars (TB) are important because they determine the load bearing capacity of the grating.

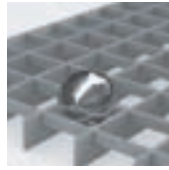
MESH CENTRE DISTANCES

Mesh centre-to-centre distance (or pitch) is the distance between the centre of the bearing bars and the centre of the transverse bars. It is decided based on standards and load capacity and is used by our design office to produce the calculation notes.

For a BB thickness of 2 to 3 mm, the centre distance of the BB and TB is typically a multiple of 11.11. For a BB and TB thickness of 4 and 5 mm, the BB centre distance is typically a multiple of 18 and the TB centre distance a multiple of 17.

GEI has a range of press-locked gratings with different mesh types on offer:

- Standard mesh: 30 x 30 - 30 x 40 - etc.
- Security bars: 19 x 40 - 30 x 19 - 19 x 19 - etc.
- Reduced mobility mesh: 19 x 19.
- Other options are available on request.



Security mesh with holes that do not let through anything exceeding a 20mm diameter ball

For decorative large-meshed vertical panels (for example: 60 x 60 mm – 40 x 100 mm – etc.), it is possible to make panels with aligned meshes as well as whole meshes for aesthetic purposes.

BEARING BARS

Standard height: from 20 to 150 mm.

Standard thickness: from 2 to 8 mm.

Other options are available on request.

TRANSVERSE BARS

Standard height: 10 mm.

Standard thickness: 2 mm.

Other options are available on request.

DIMENSIONS

Max length of BB: 4,000 mm.

Max length of TB: 2,000 mm.

MATERIALS

S235JR steel as per EN 10025 standards.

304 (1.4301) or 316Ti (1.4571) stainless steel.

AlMg3 aluminium.

SURFACE FINISHES

Galvanisation as per EN ISO 1461 standards.

Powder-coating as per RAL standard.

Other options are available on request.

FINISHES

“T” or “flat” banding bars.

Single or double anti-slip serration on request.

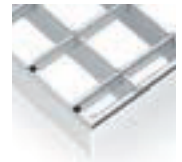
Half-moon or saw-toothed anti-slip serration options.



Double anti-slip serration



“Flat” banding bar



“T” banding bar

FINISHED PRODUCTS

Untreated or galvanized mats, half-mats, panels and stair treads are kept in stock and can easily be assembled on site.

Custom manufacture possible based on the dimensions and/or plans supplied by the customer.

Max dimensions: for optimal grating quality, we advise you not to exceed a height/length ratio of 2 m² in 30 gauge mesh and 1.5 m² in 19 gauge mesh.

AREAS OF APPLICATION

INDUSTRY

- Thermal, hydro-electric, nuclear and solar power stations
- Chemical and oil industries
- Automotive and steel industry
- Shipbuilding
- Cement works
- Transformation and metallic construction
- Railings and fencing
- Emergency stairs
- Railway and transportation industries
- Drains and ventilation systems
- Motorway T3A grating
- Heavy loads

ARCHITECTURE

- Decorative purposes
- Sun shading
- Decorative cladding
- False ceiling
- Fencing
- Safety railings
- Urban furniture
- Gangway
- Multisports grounds
- Metallic construction





PRESS-LOCKED
 PRESS-WELDED
 STAINLESS STEEL AND ALUMINIUM
 LOUVRED GRATING
 SHELVING, FENCING AND SAFETY RAILINGS
 FRP
 STAIR TREADS
 SPIRAL STAIRCASES
 SAFETY GRIDS
 SPECIAL GRATINGS
 FASTENING SYSTEMS AND ACCESSORIES
 TECHNICAL SUPPORT
 STOCK PROGRAMME

GEI ALSO STOCKS OTHER VARIETIES OF PRESS-LOCKED GRATINGS TO MEET EVEN MORE SPECIFIC NEEDS.



GEI HEAVY DUTY GRATING

Heavy duty grating is press-locked grating in which the BBs and TBs are particularly thick. As its name suggests, it's designed to support heavy loads and is mainly used in industrial gangways for heavy vehicles (trucks, helicopters, tanks, etc.). As each project is unique, our design office will advise you according to your needs and requirements.



GEI FULL GRATING

Full grating has bearing bars and cross bars of equal height. It is perfectly suited to intensive industrial use due to its excellent load bearing qualities as it is to architectural use, as it provides an increased degree of visual screening for creating aesthetic ensembles. This means GEI full grating can be used as industrial flooring, but architects also value it for use in safety railing for sun shades and screening.



Press-welded grating consists of square, twisted transverse bars that have been electrowelded to the bearing bars. Welding at the joint of each BB and TB ensures maximum firmness and robustness.

It is particularly suited to places where structural changes are frequent or where more cutting is needed. Press-welded grating is used a lot in numerous industrial sectors.





PRESS-WELDED GRATING



PRESS-LOCKED

PRESS-WELDED

STAINLESS STEEL AND ALUMINIUM

LOUVRED GRATING

SHELVING, FENCING AND SAFETY RAILINGS

FRP

STAIR TREADS

SPIRAL STAIRCASES

SAFETY GRIDS

SPECIAL GRATINGS

FASTENING SYSTEMS AND ACCESSORIES

TECHNICAL SUPPORT

STOCK PROGRAMME

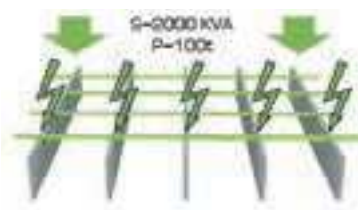
METHOD OF MANUFACTURE

Press-welded grating is obtained by electrical welded transverse bars, which are usually square and twisted (but can be round and straight) into the bearing bars. The grating is produced with "flat" banding, and then optionally undergoes hot-dip galvanizing in accordance with the applicable EN ISO 1461 standards. For an optimised anti-slip surface, it is possible to produce serrated press-welded grating, with serration on the bearing bars only. It is typically manufactured from EN 10025 standard S235JR steel which ensures a consistent production quality. RAL-GZ 638 manufacturing tolerances applied.



STEP 1

Put in place the transverse bars and the bearing bars for electrowelding



STEP 2

Electrowelding

GENERAL TECHNICAL SPECIFICATIONS

Press-welded GEI grating is manufactured according to a precise load table. The dimensions of the bearing bars (BB) are important because they determine the load bearing capacity of the grating.

MESH CENTRE DISTANCES

Mesh centre-to-centre (or pitch) distance is the distance between the centre of the bearing bars and the centre of the transverse bars, (for example: 34.3 x 38.1). It is decided based on standards and load capacity and is used by our design office to produce calculation notes. For convenience's sake, the term "mesh gauge" is more frequently used (for example: 30 x 30).



Security mesh with holes that do not let through anything exceeding a 20mm diameter ball

GEI has a range of press-welded gratings with different mesh types on offer:

- Standard mesh: 30 x 30 - 30 x 44 - etc.
- Security bars: 19 x 40 - 30 x 19 - 19 x 19 - etc.
- Reduced mobility mesh: 19 x 19.
- Other options are available on request.

BEARING BARS

Standard height: from 25 to 60 mm.
Standard thickness: from 2 to 5 mm.
Other options are available on request.

TRANSVERSE BARS

Twisted and square: from 4 to 6 mm.
Round and straight option on request.

DIMENSIONS

Max length of BB: 6,100 mm.
Max length of square twisted bars: 1,000 mm.
Other options are available on request.

MATERIALS

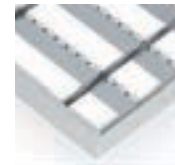
S235JR steel as per EN 10025 standards.

SURFACE FINISHES

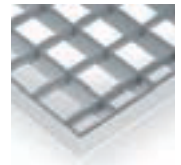
Galvanisation as per EN ISO 1461 standards. Powder-coating as per RAL standard.
Other options are available on request.

FINISHES

"Flat" banding bar.
Anti-slip serration treatment on request.



Single anti-slip serration



"Flat" banding bar

FINISHED PRODUCTS

Untreated or galvanized mats, half-mats, panels and stair treads in stock.

Custom manufacture possible based on the dimensions and/or plans supplied by the customer.



AREAS OF APPLICATION

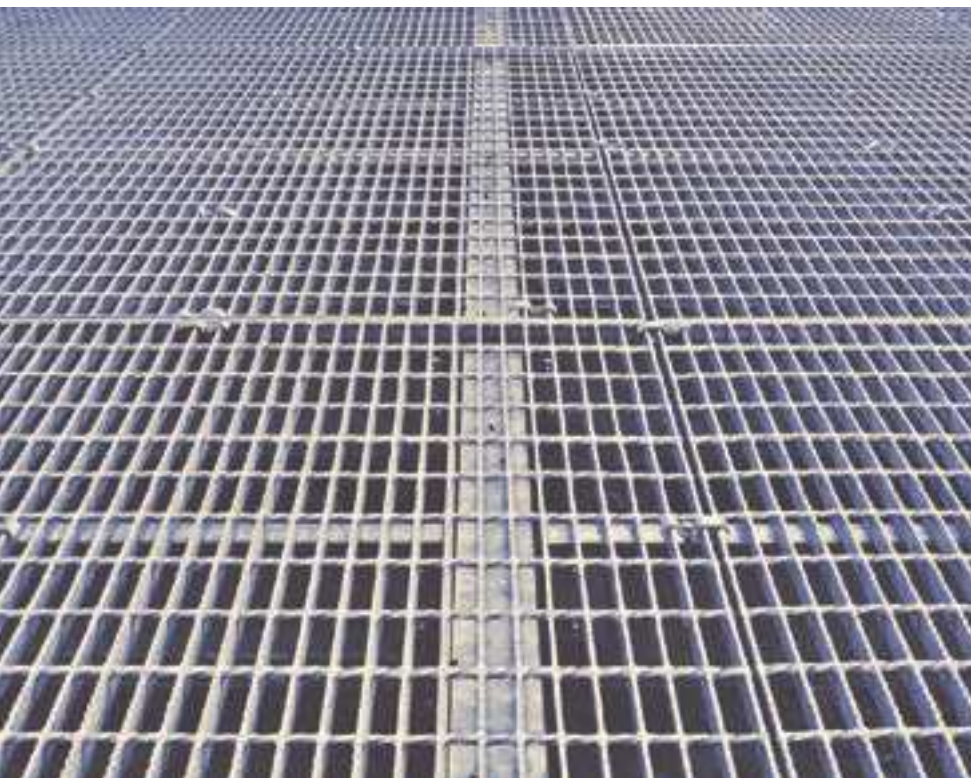
INDUSTRY

- Thermal, hydro-electric, nuclear and solar power stations
- Chemical and oil industries
- Automotive and steel industry
- Shipbuilding
- Cement works
- Transformation and metallic construction
- Railings and fencing
- Emergency stairs
- Railway and transportation industries
- Drains and ventilation systems

ARCHITECTURE

- Decorative
- Sun shading
- Fencing
- Cladding
- Urban furniture
- Gangway
- Multisports grounds





STOCK PROGRAMME

TECHNICAL SUPPORT

FASTENING SYSTEMS AND ACCESSORIES

SPECIAL GRATINGS

SAFETY GRIDS

SPIRAL STAIRCASES

STAIR TREADS

FRP

SHELVING, FENCING AND SAFETY RAILINGS

LOUVERED GRATING

STAINLESS STEEL AND ALUMINIUM

► PRESS-WELDED

PRESS-LOCKED

Stainless steel grating is suitable for all food sector and petrochemical industries.

Aluminium grating is particularly valued by architects for its matte appearance and uniform finish in grating for cladding, industrial ground and flooring, sun screens and false ceilings.

Stainless steel 304 (1.4301) is used, among others, in the food industry while 316Ti stainless steel (1.4571) is used in environments that are particularly exposed to corrosive products (sea air, etc.).



MESH CENTRE DISTANCES

GEI has a range of stainless steel and aluminium gratings with different mesh types on offer:

- Standard mesh: 30 x 30 - 30 x 60 - etc.
- Security bars: 30 x 19 - 40 x 19 - etc.
- Reduced mobility mesh: 19 x 19.
- Other options are available on request.



Security mesh with holes that do not let through anything exceeding a 20 mm diameter ball

BEARING BARS

Standard height: from 20 to 80 mm.
Standard thickness: from 2 to 5 mm.
Other options are available on request.

TRANSVERSE BARS

Standard height: 10 mm.
Standard thickness: 2 mm.
Other options are available on request.

DIMENSIONS

Max length of BB: 3,000 mm.
Max length of TB: 1,500 mm.

TREATMENTS

Stainless steel:	Aluminium:
- Untreated	- Untreated
- Pickled	- Anodised
- Passivated	- Powder-coated

FINISHES

"Flat" banding bar.
Anti-slip serration treatment of BBs or TBs on request.

FINISHED PRODUCTS

Mats, panels and stair treads are available in stock.
Custom manufacture possible based on the dimensions and/or plans supplied by the customer.



STAINLESS STEEL AND ALUMINIUM GRATINGS

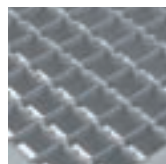


METHOD OF MANUFACTURE

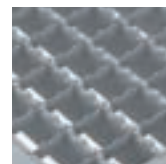
Stainless steel and aluminium gratings are press-locked. This is obtained by inserting transverse bars at high pressure into pre-existing notches in the bearing bars. For an optimised anti-slip surface, we can supply single or double serrated, anti-slip gratings. Stainless steel and aluminium GEI gratings are manufactured with tolerances in accordance with the RAL-GZ 638 standard.



"Flat" banding bar



Single anti-slip half-moon serration on BB



Double anti-slip half-moon serration on BB and TB

MAIN ADVANTAGES

- Easy to handle.
- Lightness: aluminium grating is around 3 times lighter than steel grating.
- Contemporary look.

PRESS-LOCKED

PRESS-WELDED

STAINLESS STEEL AND ALUMINIUM

LOUVRED GRATING

SHELVING, FENCING AND SAFETY RAILINGS

FRP

STAIR TREADS

SPIRAL STAIRCASES

SAFETY GRIDS

SPECIAL GRATINGS

FASTENING SYSTEMS AND ACCESSORIES

TECHNICAL SUPPORT

STOCK PROGRAMME

Louvred grating is mainly used in the architectural sector. Valued by architects for its design and simplicity of use, louvred grating is used extensively in facade elements.

Used in both new builds and renovations, it can be used in buildings for aesthetic purposes. Louvred typically at a 45° angle, this type of grating works very well as a sun screen and allows natural air passage for thermal comfort. It is also used for industrial purposes, where its screening qualities mitigate a sense of emptiness.

Examples of use:

Sun screens, decorative, ventilation systems, flooring, roofing, ...



GENERAL TECHNICAL SPECIFICATIONS

Louvred GEI grating is manufactured according to a precise load table. The dimensions of the bearing bars (BB) are important because they determine the load bearing capacity of the grating.

MESH CENTRE DISTANCES

These are decided based on standards and load capacity. For louvred grating, mesh centre distances for the BB and TB are typically in multiples of 11.11.

GEI has a range of louvred gratings with different mesh available:

- 100 x 30 - 60 x 30 - 30 x 30.
- Other options are available on request.

BEARING BARS

Standard thickness: from 2 to 3 mm.

Height of BBs and TBs (in mm):

Bearing bars	25	30	35	40	50	60
Transverse bars louvred at 45°	35	40	50	55	70	85

Other options are available on request.

DIMENSIONS

Maximum dimensions: 2,500 x 2,000 mm.

For optimal grating quality, we advise you not to exceed a height/length ratio of 1.5 m².

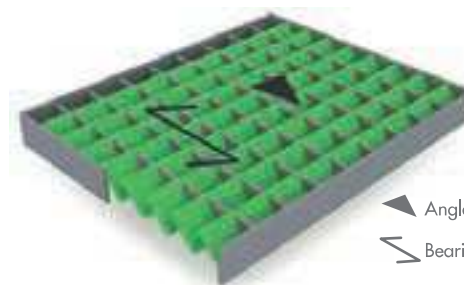
MATERIALS

S235JR steel as per EN 10025 standards.

304 (1.4301) or 316Ti (1.4571) stainless steel.

AlMg3 aluminium.

DIRECTION AND ANGLE



▲ Angle of louvres
 ↗ Bearing direction

CUSTOM-MADE

LOUVRED GRATING



PRESS-LOCKED
 PRESS-WELDED
 STAINLESS STEEL AND ALUMINIUM
 LOUVRED GRATING
 SHELVING, FENCING AND SAFETY RAILINGS
 FRP
 STAIR TREADS
 SPIRAL STAIRCASES
 SAFETY GRIDS
 SPECIAL GRATINGS
 FASTENING SYSTEMS AND ACCESSORIES
 TECHNICAL SUPPORT
 STOCK PROGRAMME

FASTENING SYSTEMS

Fastening systems are manufactured from galvanised steel for steel gratings and from stainless steel for stainless steel and aluminium gratings. In certain cases, gratings may be fixed to structures with welded brackets.



FINISHES



Finishes without banding bars



Finishes with banding bars

METHOD OF MANUFACTURE

GEI louvred grating is characterized by transverse bars inserted at 45° into the bearing bars (please check with us for any other angle). It can then be produced in “flat” sections, welded at right angles to the bearing bars. The grating then optionally undergoes hot-dip galvanizing in accordance with the applicable EN ISO 1461 standards. GEI louvred grating is typically manufactured from EN 10025 standard S235JR steel which ensures a consistent production quality.

FINISHED PRODUCTS

Custom manufacture possible based on the dimensions and/or plans supplied by the customer.

Whether it's a press-locked or press-welded grating, GEI offers you a made-to-measure design for your gratings, whether it be for shelving, fencing or railings.



GRATING FOR FENCING AND SAFETY RAILINGS

Press-locked grating for fencing or for safety railing is manufactured in galvanised steel with an optional powder-coated finish. This allows fast assembly and good resistance. Used in stadiums, factories, airports, sports grounds or for private use, press-locked grating for fencing and safety railing can be used across a variety of fields. There is also an option for press-welded or louvred press-locked grating for a screening effect.

Panels can be linked by square or flat posts which can be fixed on directly or with pre-drilled brackets (only on request).

CENTRE DISTANCES / GAUGES

Most common centre distances (press-locked grating):

- BB gauge: 33.33 mm - 44.44 mm - 55.55 mm - 66.66 mm in 25 / 2.
- TB gauge: 33.33 mm - 44.44 mm - 55.55 mm - 66.66 mm - 99.99 mm in 25 / 2.

Most common centre distances (press-welded grating):

- BB gauge: 68.6 mm in 25 / 2.
- TB gauge: 127 mm for round diameter 5 mm.

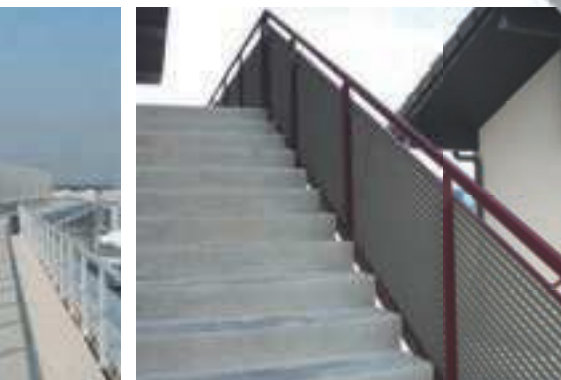
Please ask us if you have any specific requests.

METHOD OF MANUFACTURE



METHOD OF ASSEMBLY





CUSTOM-MADE



GRATING FOR SHELVING, FENCING AND SAFETY RAILINGS



PRESS-LOCKED
PRESS-WELDED
STAINLESS STEEL AND ALUMINIUM
LOUVRED GRATING
SHELVING, FENCING AND SAFETY RAILINGS
FRP
STAIR TREADS
SPIRAL STAIRCASES
SAFETY GRIDS
SPECIAL GRATINGS
FASTENING SYSTEMS AND ACCESSORIES
TECHNICAL SUPPORT
STOCK PROGRAMME

GRATING FOR SHELVING

Press-locked GEI shelving grating has excellent rigidity and allows better visibility of stored items. It means palette racks and grating cantilevers can be equipped enabling heavier loads to be supported without necessarily having to rearrange the runners to bear the load. Metallic grating is a more and more common alternative within the shelving sector due to the fact that the water from emergency sprinklers passes through this type of shelving. Manufactured from S235JR steel, press-welded grating is also available for shelving.

Depending on the environment and your limitations, different forms of grating can be created:

CORNER FLAP



This type of grating is particularly suited to shelving where height is restricted.

FLANGED EDGE



This type of grating is suitable for various types of shelving and has many advantages, particularly in terms of the cost of manufacturing it. Supported on runners, it is able to take a heavier load and the security of its flanged edge secures the grating on the racks.

WITH CLEATS



This grating offers good support and stability as the racks are supported by the cleats underneath.

INDENTED



This variety can bear greater loads as it is supported on runners and provides optimal security based on the way it is indented.



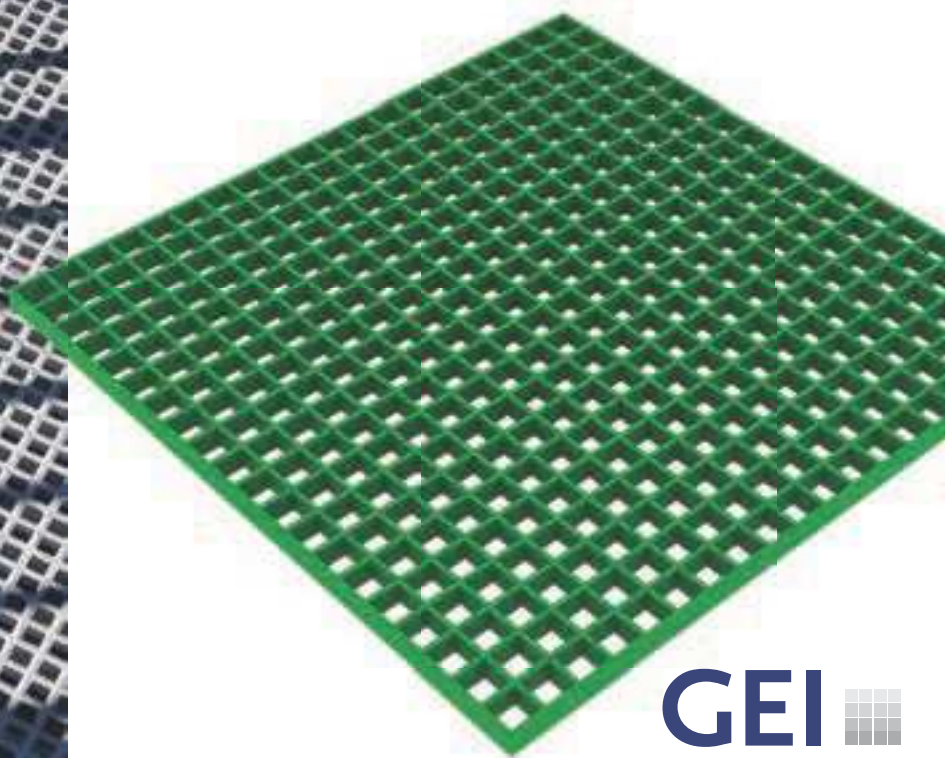
With a toughness that is proving popular within the industrial and public sectors, GEI-FIB FRP grating has many advantages.

- Fire resistant and non-toxic
- Easy to cut
- Load-bearing in both directions
- Resistant to corrosion, weathering and UV light
- Very good chemical resistance
- No electrical conductivity
- Low thermal conductivity
- Concave or gritted R13 in accordance with BGR 181 and DIN 51130 standards
- Easy assembly with specially designed clamps available in stock
- Fast delivery of custom-made products as well as those already in stock





FRP GRATING



METHOD OF MANUFACTURE

Moulded FRP grating is manufactured from fibreglass-reinforced resin. It is composed of 65% resin for its chemical and UV resistance and is composed of 35% fibreglass for increased mechanical strength. GEI has 3 types of resin on offer with different degrees of resistance to chemical corrosion.

IN STOCK



Fire-resistant and corrosion and chemical-resistant RAL 7035 grey or RAL 6010 green isophthalic resin.

FABRICATION



Vinylester resin with extremely high chemical resistance (high concentrations).



Orthophthalic resin with resistance to a wide range of chemicals.

GENERAL TECHNICAL SPECIFICATIONS

FRP GEI grating uses a precise load table.

MESH CENTRE DISTANCES

GEI has a range of FRP gratings with different mesh types on offer:

- 38 x 38 - 26 x 26 - 50 x 50 - etc.
- Security bars: 19 x 19.

BEARING BARS

Standard dimensions: 30 / 7; 38 / 7 and 50 / 7 mm.

STANDARD PANEL DIMENSIONS

- 1000 x 2026 mm.
- 1000 x 3055 mm.
- 1220 x 3055 mm.



STANDARD DIMENSIONS STAIR TREADS WITH GRITTED FRONT EDGE

- 800 x 275 mm.
- 1000 x 275 mm.
- 1000 x 350 mm.



FINISHES

- Concave.
- Grit.
- Entirely grit-covered surface.

FINISHED PRODUCTS

We stock mats, stair treads and stair rails which are easy to assemble on site.

Custom manufacture possible based on the dimensions and/or plans supplied by the customer.

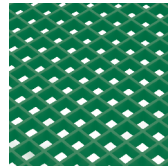


Cutting table

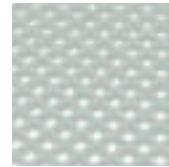


Custom-made

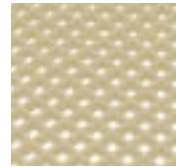
COLOURS



RAL 6010
Green



RAL 7035
Grey



RAL 1001
Beige

Other RAL colours available for special manufacture.

GEI ALSO OFFERS A RANGE OF ACCESSORIES AND SPECIAL FASTENING SYSTEMS FOR FRP GRATINGS.



316 stainless steel clamp
with 19 x 19 mesh washer.
In stock.



316 stainless steel clamp
with 30 x 30 mesh pin.
In stock.



316 stainless steel stair support
for 30 x 30 and 19 x 19 mesh.
In stock.

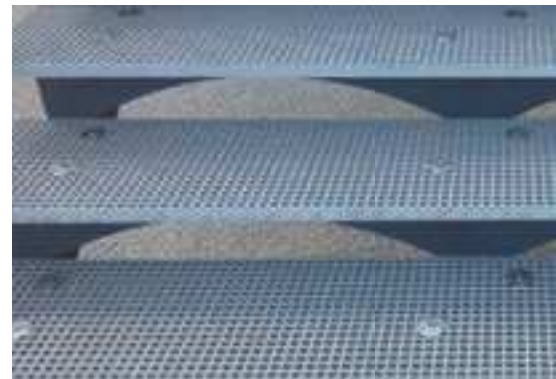
SEALING ACCESSORIES



Adjustable foot.
Dimensions of insert: 35 x 35 mm.
Thickness of insert: 20 mm.
Height of foot: 40 or 70 mm.
In stock.



FRP support bracket
Standard length: 3,000 mm.
Dimensions: 30 x 30 x 5 mm
and 50 x 50 x 6.35 mm.
Can be cut to size.
In stock.





PRESS-LOCKED
PRESS-WELDED
STAINLESS STEEL AND ALUMINIUM



LOUVERED GRATING
SHELVING, FENCING AND SAFETY RAILINGS



FRP
STAIR TREADS
SPIRAL STAIRCASES



SAFETY GRIDS
SPECIAL GRATINGS



AREAS OF APPLICATION

INDUSTRY

- Agrifood industry
- Paper and cellulose industry
- Pharmaceutical industry
- Plastics industry
- Fibre and textile industry
- Automotive construction and aeronautics
- Offshore plants
- Wastewater treatment plant
- Navy and shipbuilding
- Transport
- Stripping and galvanization plant
- Petrochemicals
- Platforms, flooring and bridges
- Stair treads
- Banister
- Sewer, excavation and well cladding
- Production lines
- Conduit cladding
- Danger zone indications
- Car wash
- Chemicals storage untreated
- Sealing
- Etc.

FASTENING SYSTEMS AND ACCESSORIES

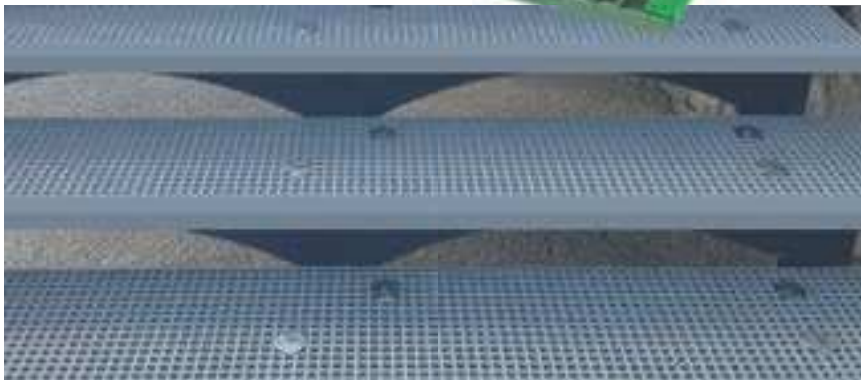
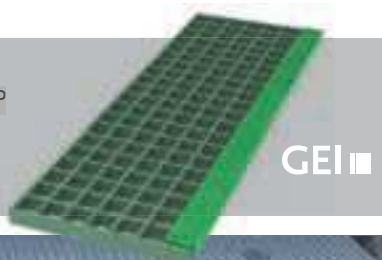
TECHNICAL SUPPORT

STOCK PROGRAMME

Whether it's for an industrial environment with its safety mesh and anti-slip serration or if it's for a public setting with its aesthetically pleasing appearance and finish, there is a staircase suited to any of your needs.

GEI is fully aware that staircase safety is a priority and therefore can supply you with a complete range of standard and custom-made staircases which meet all current safety standards, in particular P98-350 (integration of disadvantaged people).

GEI can also supply you with stair treads in FRP which comply **with all the latest environmental safety standards.**



DRILL HOLE CENTRE DISTANCES / GAUGES (PRESS-LOCKED AND PRESS-WELDED STAIR TREADS)

Depending on your specifications, we offer a wide range of drilling centre distances (itches) which suit any setup.

Stair tread width (in mm)	150 to 159	160 to 169	170 to 179	180 to 189	190 to 199	200 to 249	250 to 279	280 to 309	310 to 339	340 to 369
Dimension d (in mm)	70	80	90	100	110	120	150	180	210	240

Other dimensions for drill holes in stair risers on request.

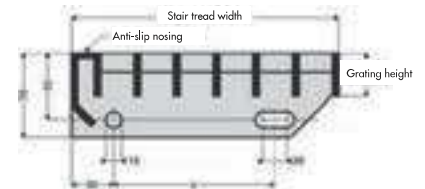
MATERIALS

S235JR steel as per EN 10025 standards.
 304 (1.4301) and 316Ti (1.4571) stainless steel.
 AlMg3 aluminium.
 FRP.

FINISHES

Single or double anti-slip serration treatment on bearing bars and/or transverse bars for an optimal anti-slip finish on request.

Option to add a nosing in a different colour for persons of reduced mobility.



FINISHED PRODUCTS

Galvanised stair treads, FRP stair treads and stainless steel supports for FRP stair treads are stocked.
 Custom manufacture possible based on the dimensions and/or plans supplied by the customer.

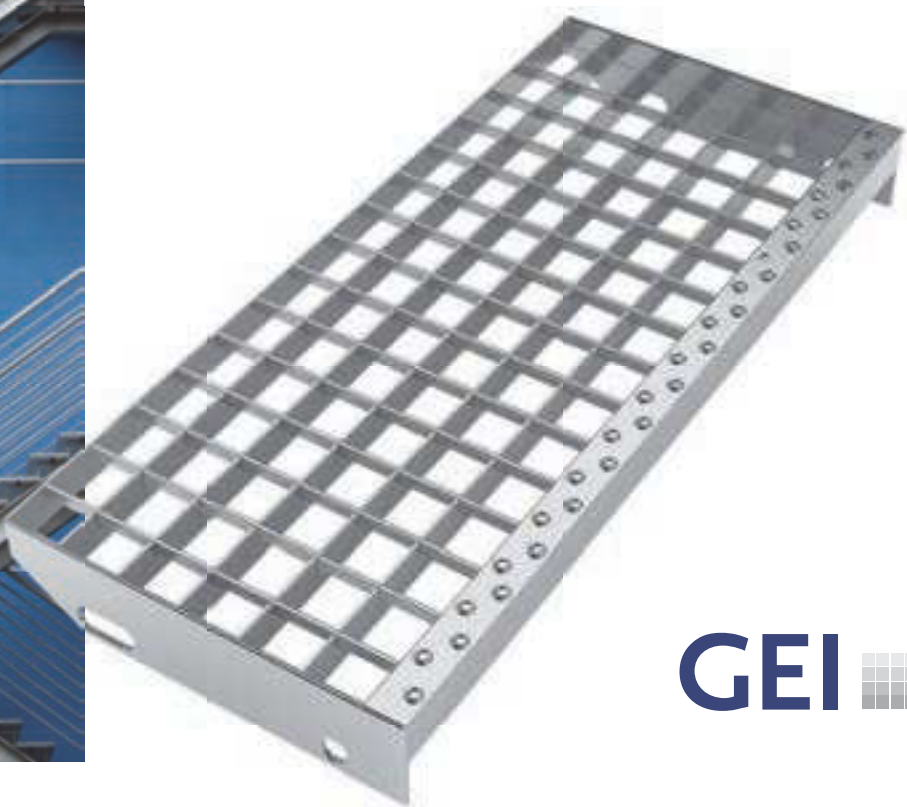




PRESS-LOCKED | PRESS-WELDED | FRP



STAIR TREADS



PRESS-LOCKED
 PRESS-WELDED
 STAINLESS STEEL AND ALUMINIUM
 LOUVRED GRATING
 SHELVING, FENCING AND SAFETY RAILINGS
 FRP
 STAIR TREADS
 SPIRAL STAIRCASES
 SAFETY GRIDS
 SPECIAL GRATINGS
 FASTENING SYSTEMS AND ACCESSORIES
 TECHNICAL SUPPORT
 STOCK PROGRAMME

METHOD OF MANUFACTURE

GEI stair treads are manufactured from press-locked, press-welded or FRP grating with anti-slip front edges (nosing) and support with standard or custom drilled holes depending on your needs. The anti-slip nosing is welded to the end bars and the first bearing bar, ensuring the step's rigidity. The mesh size as well as the height of the bearing bars is determined according to the effective width of the step and the load it needs to bear (quantity of traffic). For situations where surfaces may become slippery, the BBs and the TBs of press-locked treads and the BBs of press-welded treads can be serrated to ensure an optimal anti-slip surface. The manufacture process for press-locked and press-welded stair treads is identical to that used for gratings.

TREAD TYPES



Treads - straight stair

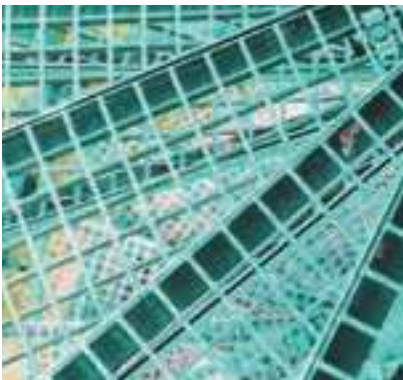


Treads - curved stair

GEI has a range of 3 varieties of spiral staircases on offer which have been designed for industrial, tertiary and public use. These prefab staircases are ready to assemble and are suitable for all structures and all types of environment.

Aesthetically suited to modern structures, spiral staircases also provide a solution in terms of space optimization. Our many years of experience have allowed us to develop stairs with certain advantages:

- fast manufacture
- reduction of time needed for assembly
- custom-made according to your needs



GEI STAIRCASE RANGE

For optimal security, our spiral staircases come equipped with solid handrails with vertical or horizontal railings.



GEI INDUS features a handrail, middle rail and skirting board



GEI LINEA features a handrail, and 5 middle rails



GEI BARO has vertical railings

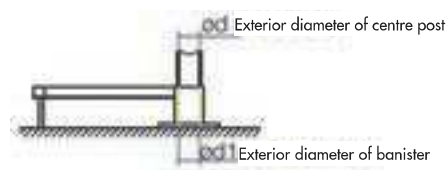
PRESS-LOCKED | PRESS-WELDED | CHECKER PLATE

SPIRAL STAIRCASES



METHOD OF MANUFACTURE

GEI spiral staircases are composed of treads with a banister, manufactured from press-locked, press-welded or checker plate grating. The mesh size as well as the height of the bearing bars is determined according to the effective width of the step and the load it needs to bear (quantity of traffic). The treads are then built up one in relation to another around a centre post.



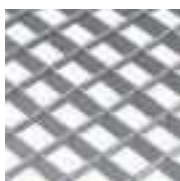
Method of staircase construction

MATERIALS

Untreated steel.
Galvanised steel.

FINISHES

Single or double anti-slip serration treatment on bearing bars and/or transverse bars of press-locked treads.
Anti-slip serration treatment on bearing bars of press-welded treads for an optimal anti-slip surface on request.



Press-locked



Press-welded



Checker plate

PRESS-LOCKED
PRESS-WELDED
STAINLESS STEEL AND ALUMINIUM
LOUVRED GRATING
SHELVING, FENCING AND SAFETY RAILINGS
FRP
STAIR TREADS
SPiral STAIRCASES
SAFETY GRIDS
SPECIAL GRATINGS
FASTENING SYSTEMS AND ACCESSORIES
TECHNICAL SUPPORT
STOCK PROGRAMME

Safety grids for functional or decorative use are suitable for any environment. Due to the wide range of varieties on offer, they guarantee a solution in terms of their great stability, grip, durability and drainage qualities as well as their use as a means of passage or the range of lighting options.



METHOD OF MANUFACTURE

Manufactured using techniques that ensures a consistent production quality, GEI safety grids meet current safety standards. GEI safety grids are manufactured with tolerances in accordance with the RAL-GZ 639 standards.

MATERIALS

S235JR steel as per EN 10025 standards.
 304 (1.4301) or 316Ti (1.4571) stainless steel.
 AlMg3 aluminium.

SURFACE FINISHES

Untreated or galvanised steel.
 Untreated or pickled stainless steel.
 Untreated, pickled or anodized aluminium.

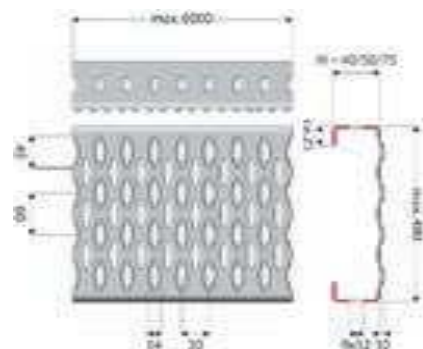
THICKNESSES

Untreated or galvanised steel: 1.5 mm / 2 mm / 2.5 mm.
 Untreated or pickled 304 or 316 stainless steel: 1.5 mm / 2 mm.
 Aluminium: 2 mm / 2.5 mm / 3 mm.



PS-CRANT

PS-CRANT safety grid stand out for its anti-slip serrated surface qualities. It is very well suited to the automotive, construction and industrial sector.



Maximum lengths:

- Untreated or galvanised steel: 6,000 mm.
- Untreated or pickled 304 or 316 stainless steel: 2,000 mm.
- Aluminium: 6,000 mm.

Standard widths:

For the full range of materials and finishes: 120 mm / 180 mm / 240 mm / 300 mm / 360 mm / 420 mm / 480 mm.

Standard height:

For the full range of materials and finishes: 40 mm / 50 mm / 75 mm.



SAFETY GRIDS



PRESS-LOCKED

PRESS-WELDED

STAINLESS STEEL AND ALUMINIUM

LOUVRED GRATING

SHELVING, FENCING AND SAFETY RAILINGS

FRP

STAIR TREADS

SPIRAL STAIRCASES

SAFETY GRIDS

SPECIAL GRATINGS

FASTENING SYSTEMS AND ACCESSORIES

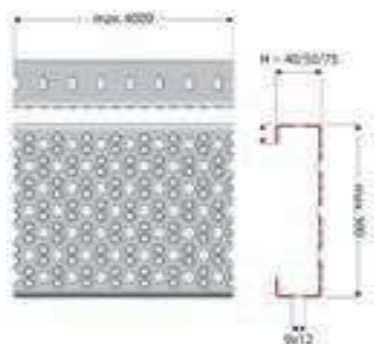
TECHNICAL SUPPORT

STOCK PROGRAMME



PS-PERF

PS-PERF safety grid has excellent grip due to the perforations at the top which allow liquid to drain through.



Maximum lengths:

- Untreated or galvanised steel: 6,000 mm.
- Untreated or pickled 304 or 316 stainless steel: 2,000 mm.
- Aluminium: 6,000 mm.

Standard widths:

For the full range of materials and finishes: 150 mm / 200 mm / 250 mm / 300 mm.

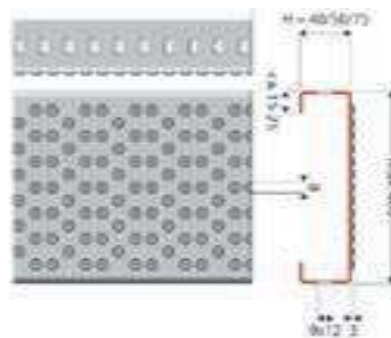
Standard height:

For the full range of materials and finishes: 30 mm / 40 mm / 50 mm / 75 mm.



PS-FERM

PS-FERM safety grid is perfect for areas to which access is restricted and where traffic safety must be guaranteed (this is the only product in our range which has no openings to see through).



Maximum lengths:

- Untreated or galvanised steel: 6,000 mm.
- Untreated or pickled 304 or 316 stainless steel: 2,000 mm.
- Aluminium: 6,000 mm.

Standard widths:

For the full range of materials and finishes: 150 mm / 200 mm / 300 mm / 400 mm.

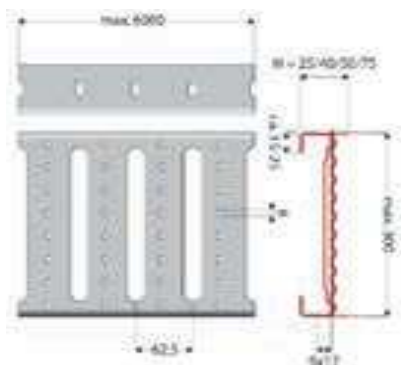
Standard height:

For the full range of materials and finishes: 40 mm / 50 mm / 75 mm.



PS-OVA

PS-OVA safety grid has a very high load-bearing capacity. This kind of grid is often used for facade cladding.



- Maximum lengths:**
- Untreated or galvanised steel: 6,000 mm.
 - Untreated or pickled 304 or 316 stainless steel: 2,000 mm.
 - Aluminium: 6,000 mm.

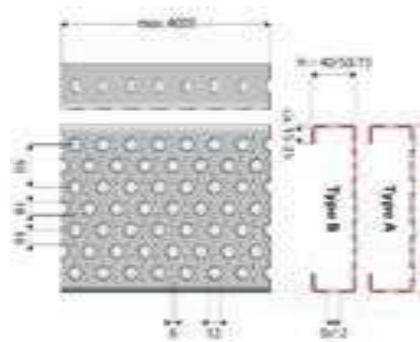
Standard widths:
For the full range of materials and finishes: 150 mm / 200 mm / 250 mm / 300 mm.

Standard height:
For the full range of materials and finishes: 30 mm / 40 mm / 50 mm / 75 mm.



PS-OFF

PS-OFF safety grid has the same advantages as PS-PERF safety grid. It grips extremely well due to the perforations stamped at the top end which allow liquid to drain through.



- Maximum lengths:**
- Untreated or galvanised steel: 6,000 mm.
 - Untreated or pickled 304 or 316 stainless steel: 2,000 mm.
 - Aluminium: 4,000 mm.

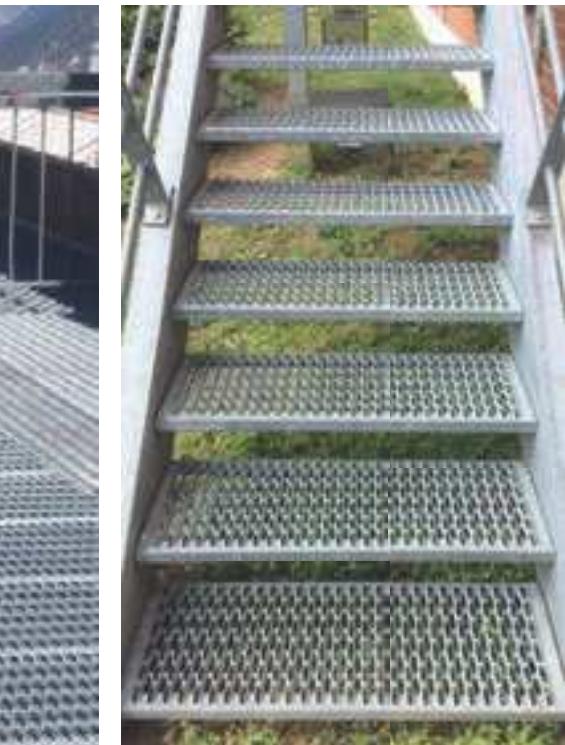
Standard widths:
For the full range of materials and finishes: 150 mm / 200 mm / 250 mm / 300 mm.

Standard height:
For the full range of materials and finishes: 40 mm / 50 mm / 75 mm.

STEEL | STAINLESS STEEL | ALUMINIUM



SAFETY GRID STAIR TREADS



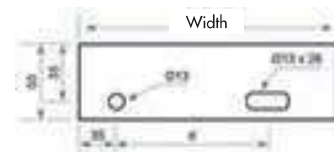
PS-CRANT TREADS



PS-PERF TREADS

Models and dimensions on stock : PS-CRANT and PS-PERF in 800 x 300 mm, 1000 x 300 mm and 1200 x 300 mm.
Other models and dimensions on request.

Tread width (in mm)	150 to 159	160 to 169	170 to 179	180 to 189	190 to 199	200 to 249	250 to 279	280 to 309	310 to 339	340 to 369
Dimension d (in mm)	70	80	90	100	110	120	150	180	210	240



Other dimensions for drill holes in stair risers on request.



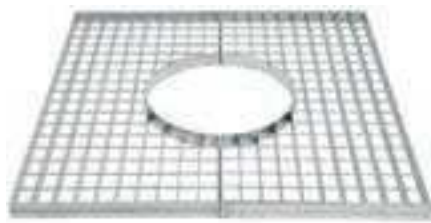
STAIR TREADS
SPiral STAIRCASES
SAFETY GRIDS
FRP
SHELving, FENCING AND SAFETY RAILINGS
LOUVRED GRATING
STAINLESS STEEL AND ALUMINIUM
PRESS-LOCKED
PRESS-WELDED
SPECIAL GRATINGS
FASTENING SYSTEMS AND ACCESSORIES
TECHNICAL SUPPORT
STOCK PROGRAMME

Gratings have a wide range of use. In order to meet the most specific needs, GEI has developed a range of special, custom-made gratings.



URBAN FURNITURE GRATINGS

Urban furniture is a term used for any item that has been installed in a public space for the benefit of the public. GEI has a range of special gratings specifically designed for this type of use.



Benches:

In press-locked steel, stainless steel or aluminium, benches become designer items. In a wide spectrum of shapes and colours, press-locked metal brings an aesthetically pleasing and original touch to your creations.

Bins:

In order to complete their urban furniture grating range, GEI has revolutionised the style of bins. A wide selection of shapes and colours are on offer.

Tree guards:

If you want to protect your trees in style and showcase them beautifully, GEI has designed a wide range of gratings for tree guards, with a selection of shapes and colours.

T3A AND T3B GRATING

T3A is a press-locked variety of grating (mesh: 30 x 130. Bearing bar: 40 / 3) which has been specially designed for motorways. It can be equipped with a spacing and connecting device on request.



T3B is an press-welded variety of grating (mesh: 30 x 100. Bearing bar: 40 / 3) which has been specially designed for motorways.

CUSTOM-MADE

SPECIAL GRATINGS



PRESS-LOCKED

PRESS-WELDED

STAINLESS STEEL AND ALUMINIUM

LOUVRED GRATING

SHELVING, FENCING AND SAFETY RAILINGS

FRP

STAIR TREADS

SPIRAL STAIRCASES

SAFETY GRIDS

SPECIAL GRATINGS

FASTENING SYSTEMS AND ACCESSORIES

TECHNICAL SUPPORT

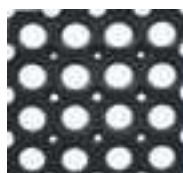
STOCK PROGRAMME

RUBBER GRATINGS

GEI rubber gratings can be used in a number of different areas, such as building entrances, walkways, staircases, access roads, production lines, ski resorts, etc.

Standard rubber grating

- Dimensions: 1,000 x 1,500 mm or 800 x 1,200 mm.
- Height: 22 mm.



Main advantages:

- Effective in damp environments
- Good drainage via rubber grips on the underside
- Tough
- Anti-slip

Reduced mobility grating

- Dimensions: 910 x 1,520 mm.
- Height: 22 mm.



Main advantages:

- Meets the P98-350 standards for disadvantaged persons due to a mesh diameter restriction below 2 cm
- Good drainage via rubber grips on the underside
- Tough
- Anti-slip
- Cut to size as requested

LADDER RUNGS RANGE

Ladders used in slippery environments require optimal safety conditions, and therefore GEI has developed two ranges of ladder rungs that are suitable for this use.

Materials: untreated or galvanised steel, 304 (1.4301) or 316Ti (1.4571) stainless steel and aluminium.

Perforations : 12 mm diameter at the top.

Custom-made option.

Range with 1 row of holes

Standard length: 2,000 mm.

Width: 25 mm.

Height: 39 mm.

Thickness: 2 mm.



Range with 2 rows of holes

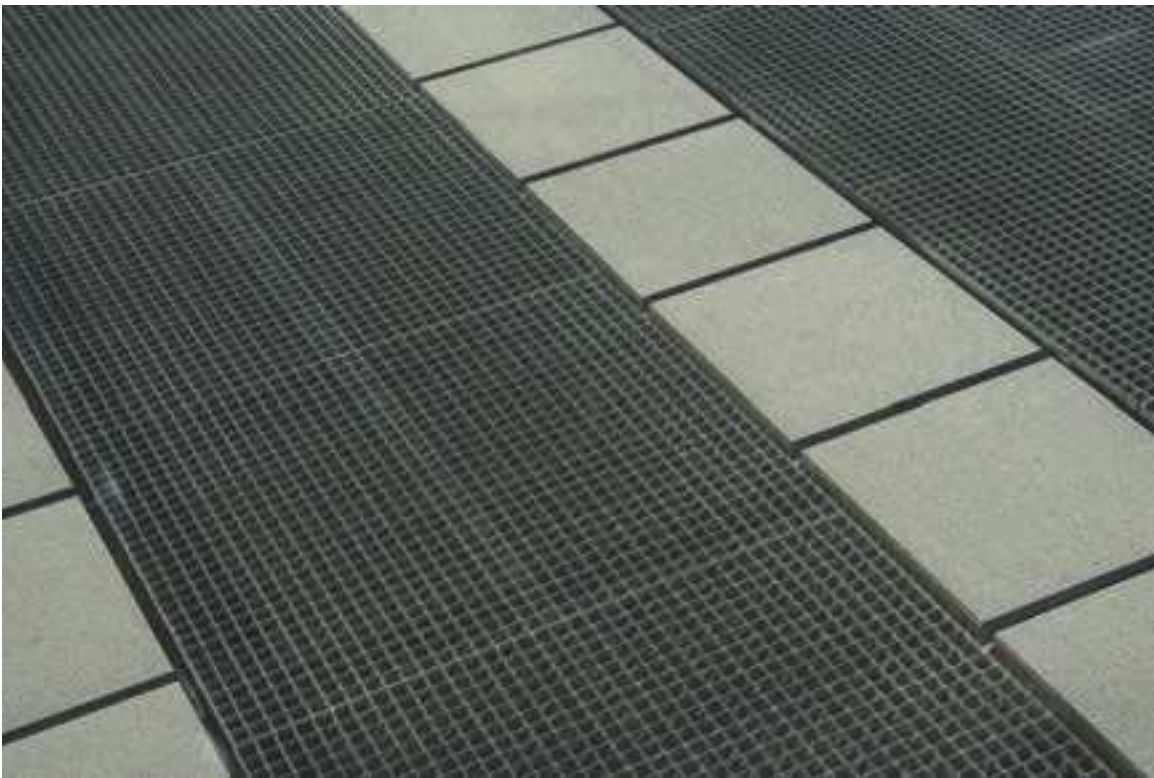
Standard length: 2,000 mm.

Width: 50 mm.

Height: 39 mm.

Thickness: 2 mm.





FASTENING SYSTEMS

GEI fastening systems allow you to fix gratings to metal structures quickly and securely. The choice of fastening system type depends on various criteria: grating type, mesh gauge, height and thickness of the bearing bars. GEI has a wide selection of fastening systems types that suit your every need.



Standard fastening system

Standard (or single) fastening system is composed of 4 parts:

- 1 washer or upper clip
- 1 screw
- 1 bottom clip (or shoe)
- 1 square bolt

Finishes available:

- Galvanised single fastening system used to secure untreated steel or galvanised gratings.
- Stainless steel single fastening system used to secure stainless steel and aluminium gratings.



Double fastening system

GEI double fastening system allows two gratings to be fixed together and is composed of 4 different parts:

- 2 washers or upper clips
- 2 screws
- 2 square bolts
- 1 bottom clip (or shoe)

Finishes available:

- Galvanised double fastening system used to secure untreated steel or galvanised gratings.
- Stainless steel double fastening system used to secure stainless steel and aluminium gratings.



Upper clip and self-posting screw (available individually)

Universal fastening system

Universal fastening system fixes to a single bearing bar, which means they can be used for gratings with large mesh gauges. They are also very discrete due to their shape. Each fastening system is composed of 4 parts:

- 1 upper clip
- 1 screw
- 1 bottom clip (or shoe)
- 1 square bolt



Stainless steel fastening system for FRP grating

Stainless steel standard retaining fastening system is used to secure FRP stair treads and gratings. Each fastening system is composed of 4 parts:

- 1 washer or upper clip
- 1 screw
- 1 bottom clip (or shoe)
- 1 square bolt



S-type fastening system for safety grids

S-type fastening system is a special fastening system used to fix safety grids to their supports. For PS-CRANT grids, it is composed of 3 parts:

- 1 S-shaped lower grip
- 1 screw
- 1 olive



For PS-PERF, PS-OFF and PS-OVA grids, S-type fastening system is composed of 2 parts:

- 1 S-shaped lower grip
- 1 screw



FASTENING SYSTEMS AND ACCESSORIES



PRESS-LOCKED
PRESS-WELDED
STAINLESS STEEL AND ALUMINIUM
LOUVRED GRATING
SHELVING, FENCING AND SAFETY RAILINGS
FRP
STAIR TREADS
SPIRAL STAIRCASES
SAFETY GRIDS
SPECIAL GRATINGS
FASTENING SYSTEMS AND ACCESSORIES
TECHNICAL SUPPORT
STOCK PROGRAMME

ADJUSTABLE FEET

GEI also supplies adjustable feet allowing you to adjust the height of steel grating (19 x 19 gauge mesh) and FRP grating (30 x 30 gauge mesh) for small surfaces that are weak load-bearing (gutters, door thresholds).

Adjustable foot for steel grating

GEI adjustable foot for steel grating is composed of 2 parts:

- 1 sleeve
- 1 actuator

Technical specifications:

- Dimensions of insert: 25 x 25 mm.
- Thickness of insert: 20 mm.
- Height of foot: 40 or 70 mm.



Adjustable foot for FRP grating

GEI adjustable foot for FRP grating is composed of 2 parts:

- 1 sleeve
- 1 actuator

Technical specifications:

- Dimensions of insert: 35 x 35 mm.
- Thickness of insert: 20 mm.
- Height of foot: 40 or 70 mm.



ADJUSTABLE PADS

Used for raised flooring in the chemical, mechanical, offshore, metallurgical or sanitation industries, pads provide security and stability. Different varieties are available dependant on your technical constraints.



Advantages of using pads:

- Adjustable up to 965 mm
- UV resistant
- Holds well in water
- Resistant to loads of up to 1,000 kg/pad
- Slope corrector available on request

Base parts:

- Mount head
- Connecting sleeve (socket)
- Pad base

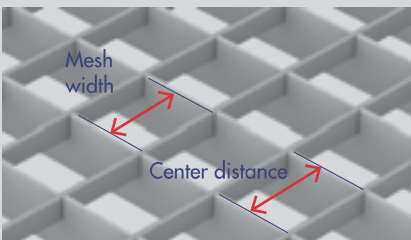


TECHNICAL INFORMATION

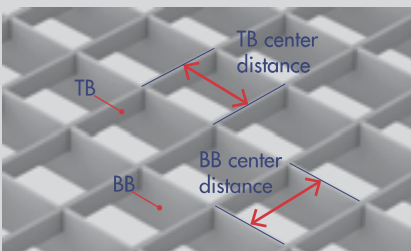
Structures

Mesh: spacing between bearing bars (BB) and transverse bars (TB). Mesh created in this way has two characteristics: mesh width and mesh centre spacing (pitch).

- **Mesh width:** the width of the opening that is between the BBs and TBs
- **Mesh centre spacing (pitch):** the distance between the centre of BBs and TBs (for example, the distance between the centre of one bearing bar and the centre of the nearest adjacent bearing bar)



Mesh gauge/type: mesh is made up of two values (in mm), where the first dimension is the distance between adjacent bearing bars, and the second dimension being the distance between adjacent transverse bars (for example: 33.33 x 33.33; 33.33 x 11.11; 55.55 x 55.55; etc.). For convenience's sake, the term "mesh gauge" is more frequently used (for example: 30 x 30 - 30 x 10 - 50 x 50 - etc.)



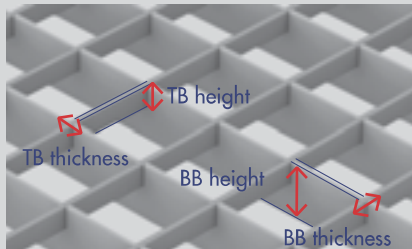
Bearing bars (BB): straight rods bearing the weight and arranged in rows at right angles to the transverse bars and supports.



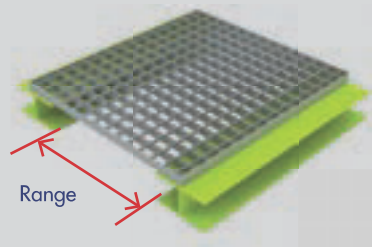
Transverse bars or cross bars (TB): arranged at right angles to the bearing bars, and bonded to the bearing bars by the exertion of high pressure (press-locked grating) or by electrowelding (press-welded grating). The transverse bars are manufactured respectively in "straight metal" or as square, twisted bars.



BB and TB gauge: this is defined by two values (in mm), where the first corresponds to their height and the second to their thickness. Gauge examples: 30 / 2; 30 / 3; 40 / 3; etc.



Range: gap between the supports on which the ends of the bearing bars rest.



Impermeability – Security bars: security mesh uses the following mesh gauge: 30 x 19; 19 x 30; 19 x 19; etc. It is recommended for industrial environments (14122 standard) and allows nothing exceeding a 20 mm diameter ball to pass through it.



Support bracket: bracket welded to the ends of the grating rendering it suitable for certain uses (for example: shelving, guttering).

Materials and finishes

3 types of "classic" materials:

- Steel
- Stainless steel
- Aluminium

As well as "classic materials", GEI has a range of FRP gratings available in 3 different resins depending on the environment:

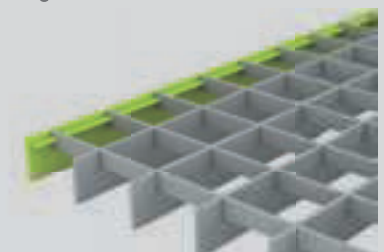
- Isophthalic
- Orthophthalic
- Vinylester

3 finish options:

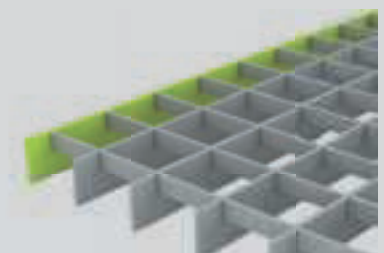
- Untreated, galvanised or powder-coated steel
- Stainless steel: untreated, pickled or electropolished
- Aluminium: untreated, anodised or powder-coated

Finishes

Banding bar: bar which forms the outer frame of the panels. Two types of banding bar are available:

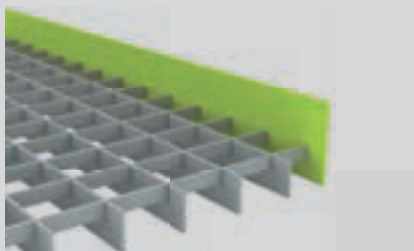


"T" banding bar (press-locking only)

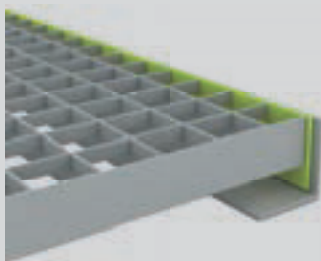


"Flat" banding bar

Toe plate - Raised border: straight metal welded onto the end of the grating This may also be called a toe plate or raised border.



Toe plate



Raised border

Serration: various types of serration can be applied to bearing and/or transverse bars. Please note that this double serration option (for BBs as well as TBs) is only applicable to press-locked grating. Serration can only be applied to bearing bars for press-welded grating.



Single anti-slip serration on BB



Single anti-slip serration on TB



Double anti-slip serration on BBs and TBs

Specific applied standards:

ISO 14122: Permanent means of access to machines and industrial plants

ISO 14122-2: Working platforms and walkways

ISO 14122-3: Stairs, ladders and handrails

RAL-GZ 638: Manufacturing tolerances for gratings

RAL-GZ 639: Manufacturing tolerances for safety grids

EN ISO 1461: Galvanisation requirements

P98-350: Integration of disadvantaged people

EN 10025: Steel standard



STOCK PROGRAMME
 TECHNICAL SUPPORT
 FASTENING SYSTEMS AND ACCESSORIES
 SPECIAL GRATINGS
 SAFETY GRIDS
 SPIRAL STAIRCASES
 STAIR TREADS
 FRP
 SHELVING, FENCING AND SAFETY RAILINGS
 LOUVRED GRATING
 STAINLESS STEEL AND ALUMINIUM
 PRESS-WELDED
 PRESS-LOCKED

ADVISORY GRATING LOAD (250 KG/M²)

FOR MESH 19 x ...

Range in mm

BB	500	600	700	800	900	1000	1100	1200	1300	1400	1500	1600	1700	1800	1900	2000
20 / 2	Green	Green	Green	Green	Green	Orange	Red	Red	Grey	Grey	Grey	Grey	Grey	Grey	Grey	Grey
20 / 3	Green	Green	Green	Green	Green	Green	Orange	Red	Red	Grey	Grey	Grey	Grey	Grey	Grey	Grey
25 / 2	Green	Green	Green	Green	Green	Green	Green	Orange	Red	Red	Grey	Grey	Grey	Grey	Grey	Grey
25 / 3	Green	Green	Green	Green	Green	Green	Green	Green	Orange	Orange	Red	Grey	Grey	Grey	Grey	Grey
30 / 2	Green	Green	Green	Green	Green	Green	Green	Green	Orange	Orange	Red	Grey	Grey	Grey	Grey	Grey
30 / 3	Green	Green	Green	Green	Green	Green	Green	Green	Green	Orange	Orange	Red	Red	Grey	Grey	Grey
35 / 2	Green	Green	Green	Green	Green	Green	Green	Green	Green	Orange	Orange	Red	Red	Grey	Grey	Grey
35 / 3	Green	Green	Green	Green	Green	Green	Green	Green	Green	Green	Green	Green	Green	Orange	Orange	Grey
40 / 2	Green	Green	Green	Green	Green	Green	Green	Green	Green	Green	Green	Green	Green	Green	Orange	Orange
40 / 3	Green	Green	Green	Green	Green	Green	Green	Green	Green	Green	Green	Green	Green	Green	Green	Green
45 / 2	Green	Green	Green	Green	Green	Green	Green	Green	Green	Green	Green	Green	Green	Green	Green	Green
45 / 3	Green	Green	Green	Green	Green	Green	Green	Green	Green	Green	Green	Green	Green	Green	Green	Green
50 / 2	Green	Green	Green	Green	Green	Green	Green	Green	Green	Green	Green	Green	Green	Green	Green	Green

FOR MESH 30 x ...

Range in mm

BB	500	600	700	800	900	1000	1100	1200	1300	1400	1500	1600	1700	1800	1900	2000
20 / 2	Green	Green	Green	Green	Red	Red	Red	Grey	Grey	Grey	Grey	Grey	Grey	Grey	Grey	Grey
20 / 3	Green	Green	Green	Green	Green	Orange	Red	Red	Red	Grey	Grey	Grey	Grey	Grey	Grey	Grey
25 / 2	Green	Green	Green	Green	Green	Green	Orange	Red	Red	Red	Grey	Grey	Grey	Grey	Grey	Grey
25 / 3	Green	Green	Green	Green	Green	Green	Green	Orange	Orange	Red	Grey	Grey	Grey	Grey	Grey	Grey
30 / 2	Green	Green	Green	Green	Green	Green	Green	Green	Orange	Red	Red	Grey	Grey	Grey	Grey	Grey
30 / 3	Green	Green	Green	Green	Green	Green	Green	Green	Green	Orange	Orange	Red	Red	Grey	Grey	Grey
35 / 2	Green	Green	Green	Green	Green	Green	Green	Green	Green	Orange	Orange	Red	Red	Grey	Grey	Grey
35 / 3	Green	Green	Green	Green	Green	Green	Green	Green	Green	Green	Orange	Orange	Orange	Red	Red	Grey
40 / 2	Green	Green	Green	Green	Green	Green	Green	Green	Green	Green	Orange	Orange	Orange	Orange	Red	Red
40 / 3	Green	Green	Green	Green	Green	Green	Green	Green	Green	Green	Green	Green	Green	Green	Orange	Orange
45 / 2	Green	Green	Green	Green	Green	Green	Green	Green	Green	Green	Green	Green	Green	Orange	Orange	Orange
45 / 3	Green	Green	Green	Green	Green	Green	Green	Green	Green	Green	Green	Green	Green	Green	Green	Green
50 / 2	Green	Green	Green	Green	Green	Green	Green	Green	Green	Green	Green	Green	Green	Green	Green	Orange

GALVANISED PRESS-LOCKED WEIGHT (KG/M²)

Mesh

BB	19 x 19	19 x 30	30 x 10	30 x 19	30 x 30
20 / 2	23.30	20.85	25.45	18.25	15.85
25 / 2	27.25	24.85	28.20	21.00	18.60
30 / 2	31.30	28.90	30.95	23.75	21.35
35 / 2	35.30	32.85	33.70	26.50	24.10
40 / 2	39.25	36.90	36.45	29.25	26.85
25 / 3	35.90	33.50	33.90	26.70	24.30
30 / 3	41.60	39.20	37.80	30.55	28.15
40 / 3	53.00	50.60	45.55	38.30	35.90

GALVANISED PRESS-WELDED WEIGHT (KG/M²)

Mesh

BB	19 x 19	19 x 30	19 x 40	30 x 19	30 x 30	30 x 40
25 / 2	29.30	26.20	24.80	21.80	18.70	17.30
30 / 2	33.45	30.40	28.95	24.45	21.35	20.00
40 / 2	41.75	38.70	37.25	29.75	26.70	25.25
25 / 3	38.35	35.25	33.80	27.30	24.20	22.75
30 / 3	44.25	41.20	39.75	31.05	27.95	26.50
40 / 3	56.15	53.10	51.65	38.60	35.45	34.05

For further information or any other uses, please contact our design office.

ADVISORY GRATING PUBLIC LOAD (450 KG/M²)

FOR MESH 19 x ...

Range in mm

BB	500	600	700	800	900	1000	1100	1200	1300	1400	1500	1600	1700	1800	1900	2000
20 / 2	Green	Green	Green	Green	Red	Red	Red	Grey	Grey	Grey	Grey	Grey	Grey	Grey	Grey	Grey
20 / 3	Green	Green	Green	Green	Green	Orange	Red	Red	Grey	Grey	Grey	Grey	Grey	Grey	Grey	Grey
25 / 2	Green	Green	Green	Green	Green	Green	Orange	Red	Red	Grey	Grey	Grey	Grey	Grey	Grey	Grey
25 / 3	Green	Green	Green	Green	Green	Green	Green	Orange	Orange	Red	Grey	Grey	Grey	Grey	Grey	Grey
30 / 2	Green	Green	Green	Green	Green	Green	Green	Green	Orange	Red	Red	Grey	Grey	Grey	Grey	Grey
30 / 3	Green	Green	Green	Green	Green	Green	Green	Green	Green	Orange	Orange	Red	Grey	Grey	Grey	Grey
35 / 2	Green	Green	Green	Green	Green	Green	Green	Green	Green	Orange	Orange	Red	Red	Grey	Grey	Grey
35 / 3	Green	Green	Green	Green	Green	Green	Green	Green	Green	Green	Orange	Orange	Red	Red	Grey	Grey
40 / 2	Green	Green	Green	Green	Green	Green	Green	Green	Green	Green	Orange	Orange	Orange	Red	Red	Grey
40 / 3	Green	Green	Green	Green	Green	Green	Green	Green	Green	Green	Green	Green	Green	Orange	Orange	Red
45 / 2	Green	Green	Green	Green	Green	Green	Green	Green	Green	Green	Green	Green	Green	Orange	Orange	Orange
45 / 3	Green	Green	Green	Green	Green	Green	Green	Green	Green	Green	Green	Green	Green	Green	Green	Green
50 / 2	Green	Green	Green	Green	Green	Green	Green	Green	Green	Green	Green	Green	Green	Green	Green	Orange

FOR MESH 30 x ...*










Range in mm

BB	500	600	700	800	900	1000	1100	1200	1300	1400	1500	1600	1700	1800	1900	2000
20 / 2	Green	Red	Red	Red	Grey	Grey	Grey	Grey	Grey	Grey	Grey	Grey	Grey	Grey	Grey	Grey
20 / 3	Green	Green	Green	Green	Red	Red	Grey	Grey	Grey	Grey	Grey	Grey	Grey	Grey	Grey	Grey
25 / 2	Green	Green	Green	Green	Red	Red	Red	Grey	Grey	Grey	Grey	Grey	Grey	Grey	Grey	Grey
25 / 3	Green	Green	Green	Green	Green	Green	Orange	Red	Red	Grey	Grey	Grey	Grey	Grey	Grey	Grey
30 / 2	Green	Green	Green	Green	Green	Green	Green	Orange	Red	Red	Grey	Grey	Grey	Grey	Grey	Grey
30 / 3	Green	Green	Green	Green	Green	Green	Green	Green	Orange	Red	Red	Grey	Grey	Grey	Grey	Grey
35 / 2	Green	Green	Green	Green	Green	Green	Green	Green	Green	Orange	Red	Red	Grey	Grey	Grey	Grey
35 / 3	Green	Green	Green	Green	Green	Green	Green	Green	Green	Green	Orange	Orange	Red	Grey	Grey	Grey
40 / 2	Green	Green	Green	Green	Green	Green	Green	Green	Green	Green	Orange	Orange	Red	Grey	Grey	Grey
40 / 3	Green	Green	Green	Green	Green	Green	Green	Green	Green	Green	Green	Orange	Orange	Orange	Grey	Grey
45 / 2	Green	Green	Green	Green	Green	Green	Green	Green	Green	Green	Green	Orange	Orange	Red	Grey	Grey
45 / 3	Green	Green	Green	Green	Green	Green	Green	Green	Green	Green	Green	Green	Green	Orange	Orange	Orange
50 / 2	Green	Green	Green	Green	Green	Green	Green	Green	Green	Green	Green	Green	Green	Green	Orange	Red

* 30 gauge mesh cannot be used in zones intended for use by persons with reduced mobility.


LOAD TYPES

Reference values. Please ask us if you have any specific requests.

	Traffic type								
	 Foot traffic (technical)	 Foot traffic (public)	 Light vehicle	 Coach	 3.5 T Utility	 11 T Heavy goods vehicle	 38 T Trailer	 Forklift	 Transpallet
Dimension of impact (in mm)	200 x 200	200 x 200	150 x 150	250 x 250	150 x 150	300 x 150	500 x 250	100 x 100 300 x 200	70 x 70
Load per impact (in kg)	100	150	550	3625	1170	3650	7800	2680 4300	500
Uniform distribution of load (in kg)	250	400							



PRESS-LOCKED
PRESS-WELDED
STAINLESS STEEL AND ALUMINIUM
LOUVRED GRATING
SHELVING, FENCING AND SAFETY RAILINGS
FRP
STAIR TREADS
SPIRAL STAIRCASES
SAFETY GRIDS
SPECIAL GRATINGS
FASTENING SYSTEMS AND ACCESSORIES
TECHNICAL SUPPORT
STOCK PROGRAMME

GALVANISED PRESS-LOCKED PANELS

PANELS WITH BANDING BARS 30 X 30 MESH			
BB	Dimensions in mm ¹	Foot traffic	Light vehicle
30 / 2	200 x 1000	✓	✓
	200 x 1250	✓	✓
	250 x 1000	✓	✓
	250 x 1250	✓	✓
	300 x 500	✓	✓
	300 x 1000	✓	✓
	400 x 500	✓	
	400 x 1000	✓	
	500 x 500	✓	
	500 x 1000	✓	
	600 x 500	✓	
	600 x 1000	✓	
	700 x 1000	✓	
	800 x 500	✓	
	800 x 1000	✓	
	900 x 1000	✓	
	1000 x 400	✓	
	1000 x 500	✓	
	1000 x 600	✓	
	1000 x 700	✓	
1000 x 800	✓		
1000 x 900	✓		
1000 x 1000	✓		
1000 x 1250	✓		
1000 x 2000	✓		
1100 x 1000	✓		
1200 x 500	✓		
1200 x 600	✓		
1200 x 1000	✓		
1250 x 1000	✓		
1300 x 1000	✓		
2000 x 1000			
20 / 2	400 x 600	✓	
30 / 3	1000 x 1000 ●	✓	
	1000 x 1500 ●	✓	
	1400 x 1000	✓	
	1500 x 500	✓	
	1500 x 1000	✓	

⁽¹⁾ The first value represents the bearing direction

● Available in 10 to 15 days

PANELS WITH BANDING BARS 30 X 10 MESH			
BB	Dimensions in mm ¹	Foot traffic	Light vehicle
30 / 2	800 x 1000	✓	
	900 x 1000	✓	
	1000 x 500	✓	
	1000 x 600	✓	
	1000 x 700	✓	
	1000 x 800	✓	
	1000 x 900	✓	
	1000 x 1000	✓	
30 / 3	1500 x 1000	✓	

PANELS WITH BANDING BARS 30 X 19 MESH

30 / 2	800 x 1000	✓	
	1000 x 1000	✓	
	1200 x 1000	✓	
30 / 3	1500 x 1000	✓	

PANELS WITH BANDING BARS 19 X 19 MESH

30 / 2	500 x 1000	✓	
	800 x 1000	✓	
	1000 x 1000	✓	
30 / 3	1500 x 1000	✓	

PANELS WITH BANDING BARS 19 X 30 MESH DOUBLE SAW-TOOTHED SERRATION

30 / 3	500 x 1000	✓	
	600 x 1000	✓	
	700 x 1000	✓	
	800 x 1000	✓	
	900 x 1000	✓	
	1000 x 1000	✓	
	1000 x 1200	✓	
	1000 x 1500	✓	
	1200 x 1000	✓	
	1500 x 1000	✓	

PANELS WITH BANDING BARS 30 X 30 MESH DOUBLE HALF-MOON SERRATION

30 / 2	600 x 1000 ●	✓	
	700 x 1000 ●	✓	
	800 x 1000 ●	✓	
	900 x 1000 ●	✓	
	1000 x 1000 ●	✓	
30 / 3	1200 x 1000 ●	✓	
	1500 x 1000 ●	✓	

UNTREATED AND GALVANISED PRESS-LOCKED MATS

MATS WITHOUT BANDING BARS UNTREATED

Mesh	BB	Dimensions in mm ¹
30 x 30	30 / 2	3000 x 994
	30 / 3	3000 x 994
30 x 19	30 / 2	3000 x 994
	30 / 3	3000 x 994
30 x 10	30 / 2	3000 x 994
19 x 19	25 / 2	3000 x 994
	30 / 2	3000 x 994
	40 / 2	3000 x 994

MATS WITHOUT BANDING BARS GALVANISED

30 x 30	30 / 2	3000 x 994
	30 / 2	4000 x 1200
	30 / 3	3000 x 994
19 x 19	30 / 2	3000 x 994

MATS WITHOUT BANDING BARS UNTREATED SIMPLE HALF-MOON SERRATION

30 x 10	30 / 3	3000 x 994
---------	--------	------------

MATS WITHOUT BANDING BARS UNTREATED DOUBLE HALF-MOON SERRATION

30 x 30	30 / 2	3000 x 994
	30 / 3	3000 x 994
19 x 30	30 / 2	3000 x 994
	30 / 3	3000 x 994



ALUMINIUM PRESS-LOCKED PANELS

PANELS WITH BANDING BARS DKP MESH 30 X 30

BB	Dimensions in mm ¹	Foot traffic	Light vehicle
40 / 2	1000 x 1000	✓	

PANELS WITH BANDING BARS DKP MESH 30 X 19

40 / 2	1000 x 1000	✓	
--------	-------------	---	--

PANELS WITH BANDING BARS DKP MESH 19 X 19

40 / 2	1000 x 1000	✓	
--------	-------------	---	--



CUSTOM-MADE MANUFACTURING AND ONE OF THE LARGEST GRATING STOCKISTS IN EUROPE

As well as custom-made products drafted by our design office according to your plans and specifications, **GEI** carries a large stock of standard steel, stainless steel and FRP (panels, mats, stair treads and safety grids). We guarantee to always stay in touch with your delivery times and requirements, as responsiveness is one of our core values.

This is why we have made an Express service available to our customers, which allows us to provide same-day expedition for products that are in stock and have been ordered before 10am. Being responsive, ensuring availability of our products and delivering them in the best time possible are daily challenges that we set ourselves in order to guarantee your complete satisfaction.

PRESS-LOCKED

PRESS-WELDED

STAINLESS STEEL AND ALUMINIUM

LOUVRED GRATING

SHELVING, FENCING AND SAFETY RAILINGS

FRP

STAIR TREADS

SPIRAL STAIRCASES

SAFETY GRIDS

SPECIAL GRATINGS

FASTENING SYSTEMS AND ACCESSORIES

TECHNICAL SUPPORT

STOCK PROGRAMME

GALVANISED PRESS-LOCKED STAIR TREADS

PRESS-LOCKED TREADS 30 X 30 MESH

BB	Dimensions in mm ¹	Drilling center distance
25 / 2	500 x 200 ●	120
	500 x 240 ●	120
	600 x 200 ●	120
30 / 2	600 x 230	120
	600 x 240	120
	600 x 260	150
	600 x 270	150
	600 x 305	180
	600 x 330	210
	700 x 200 ●	120
	700 x 230	120
	700 x 240	120
	700 x 260	150
	700 x 270	150
	700 x 305	180
	700 x 330	210
	800 x 200 ●	120
	800 x 230	120
	800 x 240	120
	800 x 260	150
	800 x 270	150
	800 x 305	180
	800 x 330	210
900 x 200 ●	120	
900 x 230	120	
900 x 240	120	
900 x 260	150	
900 x 270	150	
900 x 305	180	
900 x 330	210	
1000 x 200 ●	120	
1000 x 230	120	
1000 x 240	120	
1000 x 260	150	
1000 x 270	150	
1000 x 305	180	
1000 x 330	210	
1200 x 200 ●	120	
1200 x 240 ●	120	
1200 x 330	210	
1400 x 330	210	
40 / 2	600 x 270	150
	800 x 270	150
	1000 x 270	150
	1200 x 270	150
30 / 3	1200 x 270	150
	1200 x 305	180
	1200 x 330	210

PRESS-LOCKED TREADS 30 X 19 MESH

BB	Dimensions in mm ¹	Drilling center distance
30 / 2	600 x 330	210
	700 x 330	210
	800 x 330	210
	900 x 330	210
	1000 x 330	210
40 / 2	900 x 330	210
	1200 x 330	210
40 / 3	1400 x 330	210

PRESS-LOCKED TREADS 19 X 19 MESH

30 / 2	600 x 330	210
	700 x 330	210
	800 x 330	210
	900 x 330	210
	1000 x 330	210
	1000 x 350	240
35 / 2	1200 x 330	210
	1400 x 330	210
40 / 2	1000 x 330	210
	1200 x 350	240
	1400 x 350	240

PRESS-LOCKED TREADS 30 X 10 MESH

25 / 2	600 x 240 ●	120
	600 x 270 ●	150
	700 x 240 ●	120
	700 x 270 ●	150
30 / 2	600 x 270	150
	800 x 240	120
	800 x 270	150
	900 x 240 ●	120
	900 x 270	150
	1000 x 240 ●	120
	1000 x 270	150
40 / 2	1200 x 240 ●	120
	1200 x 270 ●	150
40 / 3	1200 x 305	180

⁽¹⁾ The first value represents the bearing direction

● Available in 10 to 15 days

GALVANISED PRESS-LOCKED STAIR TREADS

PRESS-LOCKED TREADS 30 X 30 MESH DOUBLE HALF-MOON SERRATION

BB	Dimensions in mm ¹	Drilling center distance
30 / 2	600 x 240 ●	120
	600 x 270 ●	150
	700 x 240 ●	120
	700 x 270 ●	150
	800 x 240 ●	120
	800 x 270 ●	150
	900 x 240 ●	120
40 / 2	900 x 270 ●	150
	1000 x 240 ●	120
	1000 x 270 ●	150
	1200 x 240 ●	120
	1200 x 270 ●	150

PRESS-LOCKED TREADS 30 X 10 MESH SIMPLE HALF-MOON SERRATION

30 / 2	800 x 240	120
30 / 3	1000 x 270	150
40 / 3	1200 x 305	180

PRESS-LOCKED TREADS 19 X 30 MESH DOUBLE SAW-TOOTHED SERRATION

30 / 3	700 x 250	150
	800 x 250	150
	800 x 300	180

STAINLESS STEEL PRESS-LOCKED MATS, PANELS AND STAIR TREADS

PRESS-LOCKED PANELS WITH BANDING BARS STAINLESS STEEL 304 DKP 30 X 30 MESH

BB	Dimensions in mm ¹	Foot traffic	Light vehicle
30 / 2	500 x 1000	✓	
	800 x 1000	✓	
	1000 x 1000	✓	

PRESS-LOCKED PANELS WITH BANDING BARS STAINLESS STEEL 304 DKP 30 X 19 MESH

30 / 2	1000 x 1000	✓	
--------	-------------	---	--

PRESS-LOCKED PANELS WITH BANDING BARS STAINLESS STEEL 304 DKP 19 X 19 MESH

30 / 2	1000 x 1000	✓	
--------	-------------	---	--

PRESS-LOCKED PANELS WITHOUT BANDING BARS UNTREATED STAINLESS STEEL

Mesh	BB	Dimensions in mm ¹
30 x 30	30 / 2	3000 x 1000
30 x 19	30 / 2	3000 x 1000



PRESS-LOCKED TREADS STAINLESS STEEL 304 DKP 30 X 30 MESH

BB	Dimensions in mm ¹	Drilling center distance
30 / 2	800 x 300	180
	1000 x 300	180



PRESS-WELDED PANELS AND STAIR TREADS

PRESS-WELDED PANELS WITH BANDING BARS 30 X 30 MESH

BB	Dimensions in mm ¹		
		Foot traffic	Light vehicle
30 / 2	200 x 1000	✓	✓
	250 x 1000	✓	✓
	300 x 1000	✓	✓
	400 x 1000	✓	
	500 x 1000	✓	
	600 x 1000	✓	
	700 x 1000	✓	
	800 x 1000	✓	
	900 x 1000	✓	
	1000 x 1000	✓	
30 / 3	1500 x 1000	✓	

PRESS-WELDED STAIR TREADS 30 X 30 MESH

BB	Dimensions in mm ¹	Drilling center distance
30 / 2	600 x 230	120
	600 x 240	120
	600 x 260	150
	700 x 230	120
	700 x 240	120
	800 x 230	120
	800 x 240	120
	800 x 260	150
	800 x 305	180
	800 x 330	210
	900 x 230	120
	900 x 240	120
	900 x 305	180
	900 x 330	210
	1000 x 230	120
	1000 x 240	120
1000 x 260	150	



PRESS-WELDED STAIR TREADS 30 X 19 MESH

30 / 2	600 x 230	120
	600 x 240	120
	600 x 260	150
	700 x 230	120
	700 x 240	120
	800 x 230	120
	800 x 240	120
	800 x 260	150
	800 x 270	150
	900 x 230	120
	900 x 330	210
	1000 x 230	120
	1000 x 240	120
	1000 x 260	150

⁽¹⁾ The first value represents the bearing direction

Find our latest innovations on:

WWW.GEISA.LU

PRESS-WELDED MATS AND HALF-MATS

30 X 30 MESH

BB	Dimensions in mm ¹		
		Galvanised	Untreated
25 / 2	6100 x 1000	•	•
	3050 x 1000	•	•
25 / 3	6100 x 1000	•	•
	3050 x 1000	•	•
30 / 2	6100 x 1000	•	•
	3050 x 1000	•	•
30 / 3	6100 x 1000	•	•
	3050 x 1000	•	•
40 / 2	6100 x 1000	•	
40 / 3	6100 x 1000	•	•
40 / 5	6100 x 1000	•	•

19 X 68 MESH

25 / 2	6100 x 1000		•
30 / 2	6100 x 1000		•

19 X 40 MESH

25 / 2	3050 x 1000		•
25 / 3	6100 x 1000	•	•
30 / 2	6100 x 1000	•	•
30 / 3	6100 x 1000	•	•
	3050 x 1000	•	

19 X 19 MESH

30 / 2	6100 x 1000	•	•
	3050 x 1000	•	•
30 / 3	6100 x 1000	•	•

30 X 100 MESH

25 / 2	6100 x 1000		•
--------	-------------	--	---

30 X 40 MESH

25 / 2	3050 x 1000	•	•
30 / 3	6100 x 1000	•	•
	3050 x 1000	•	•

30 X 19 MESH

30 / 2	6100 x 1000	•	•
30 / 2	3050 x 1000	•	•
30 / 3	6100 x 1000	•	•
40 / 3	6100 x 1000	•	•

GALVANISED PRESS-WELDED MATS HALF-MOON ANTI-SLIP SERRATION

Mesh	BB	Dimensions in mm ¹
30 x 100	25 / 5	6100 x 1000
30 x 100	30 / 5	6100 x 1000
30 x 40	40 / 5	6100 x 1000

FASTENING SYSTEMS AND ACCESSORIES

GALVANISED FASTENING SYSTEMS

	Mesh
Stainless steel standard retaining fastening system with clip	19 x 19
	30 x 10
	30 x 19
Stainless steel standard retaining fastening system with washer	30 x 30
	30 x 30
Universal fastening system	Large mesh
Stainless steel double retaining fastening system with clip	19 x 19
	30 x 30
Complete fastening system for FRP grating	19 x 19
Upper clip	19 x 19
	30 x 10
	30 x 19
	30 x 30
Universal upper clip	40 x 19
	Large mesh

STAINLESS STEEL FASTENING SYSTEMS

	Mesh
Stainless steel standard retaining fastening system with clip	19 x 19
	30 x 30
Complete fastening system with clip for FRP grating	38 x 38
Complete fastening system with washer for FRP grating	19 x 19
Upper clip	30 x 30
	19 x 19

HILTI FASTENING SYSTEM

HILTI fastening system without cartridge
--

SAFETY GRID FASTENING SYSTEM

S-type fastening system without olive
FRP olive for serrated grids

SCREW

	Ø mm	Length in mm
Self-tapping screw	6.3	50
	6.3	60

STAIR TREAD SUPPORT

	Mesh
FRP grating stair tread support	30 x 30
	19 x 19

ADJUSTABLE FEET

	Insert thickness in mm	Insert dimensions in mm	Foot height in mm
For FRP grating	20	35 x 35	40 ou 70
For steel grating	20	25 x 25	40 ou 70




ADJUSTABLE PAD

For grating	Height adjustment in mm
	90 à 145

• In stock.

FRP MATS AND STAIR TREADS

FRP MATS

Height in mm	Mesh	Dimensions in mm ¹	 RAL 6010 Green		 RAL 7035 Grey		 RAL 1001 Beige	
			Gritted	Concave	Gritted	Concave	Gritted	Concave
30	38 x 38	1000 x 2026	•	•	•	•		
	38 x 38	1000 x 3055	•	•	•	•		
	38 x 38	1220 x 3055	•	•	•	•		
38	38 x 38	1000 x 2026	•	•				
	38 x 38	1000 x 3055	•	•				
	38 x 38	1220 x 3055	•	•				
25	19 x 19	198 x 2026			•			
	19 x 19	198 x 3055			•			
	19 x 19	312 x 2026			•			
	19 x 19	312 x 3055			•			
	19 x 19	1000 x 2026			•			
	19 x 19	1000 x 3055			•			
30	19 x 19	1000 x 2026	•	•	•	•		•
	19 x 19	1000 x 3055	•	•	•	•		•
	19 x 19	1220 x 3055	•	•	•	•		
38	19 x 19	1000 x 2026	•		•			
	19 x 19	1000 x 3055	•		•			
	19 x 19	1220 x 3055	•		•	•		
30	26 x 26	1000 x 3075	•		•			
50	50 x 50	1220 x 3055				•		
	50 x 50	1220 x 3660				•		

FRP GRATING FULLY COVERED WITH GRIT

30 + 3	38 x 38	1000 x 3055	•		•			
--------	---------	-------------	---	--	---	--	--	--


FRP STAIR TREADS WITH GRITTED NOSING

38	38 x 38	800 x 275		•		•		
	38 x 38	1000 x 275		•		•		
	38 x 38	1000 x 350		•		•		
	19 x 19	800 x 275		•		•		
	19 x 19	1000 x 275		•		•		
	19 x 19	1000 x 350		•		•		

FRP CORNER PROTECTORS

Thickness in mm	Dimensions in mm	Length in mm	 RAL 6010 Green	 RAL 7035 Grey	 RAL 1001 Beige
5	30 x 30	3000		•	
6.35	50 x 50	3000		•	

STANDARD RUBBER GRATING


Height in mm	Dimensions in mm	
22	1000 x 1500	
	800 x 1200	



⁽¹⁾ The first value represents the bearing direction

SAFETY GRIDS

PS-CRANT SAFETY GRIDS

Length in mm	Width in mm	Height / Thickness in mm		
			Galvanised	Untreated
4020	120	50 / 2		•
	180	50 / 2	•	•
	240	50 / 2	•	•
	300	50 / 2	•	•
	360	50 / 2	•	•
	480	50 / 2	•	•



PS-PERF SAFETY GRIDS

4020	200	50 / 2	•	•
	250	50 / 2	•	•
	300	50 / 2	•	•



PS-OFF SAFETY GRIDS

4020	200	50 / 2	•	•
	250	50 / 2	•	•
	300	50 / 2	•	•



PS-OVA SAFETY GRIDS

4020	200	50 / 2	•	•
	250	50 / 2	•	•
	300	50 / 2	•	•



PS-FERM SAFETY GRIDS

4020	200	50 / 2	•	•
	250	50 / 2	•	•
	300	50 / 2	•	•



PS-CRANT GALVANISED TREADS

800	300	50 / 2	•	
1000	300	50 / 2	•	
1200	300	50 / 2	•	



PS-PERF GALVANISED TREADS

800	300	50 / 2	•	
1000	300	50 / 2	•	
1200	300	50 / 2	•	



PRESS-LOCKED

PRESS-WELDED

STAINLESS STEEL AND ALUMINIUM

LOUVRED GRATING

SHELVING, FENCING AND SAFETY RAILINGS

FRP

STAIR TREADS

SPIRAL STAIRCASES

SAFETY GRIDS

SPECIAL GRATINGS

FASTENING SYSTEMS AND ACCESSORIES

TECHNICAL SUPPORT

STOCK PROGRAMME



120, boulevard de la Pétrusse
L-2330 LUXEMBOURG

Tel.: 00352 26 29 66 51
Fax: 00352 26 29 61 05
Email: gei@geisa.lu

WWW.GEISA.LU
