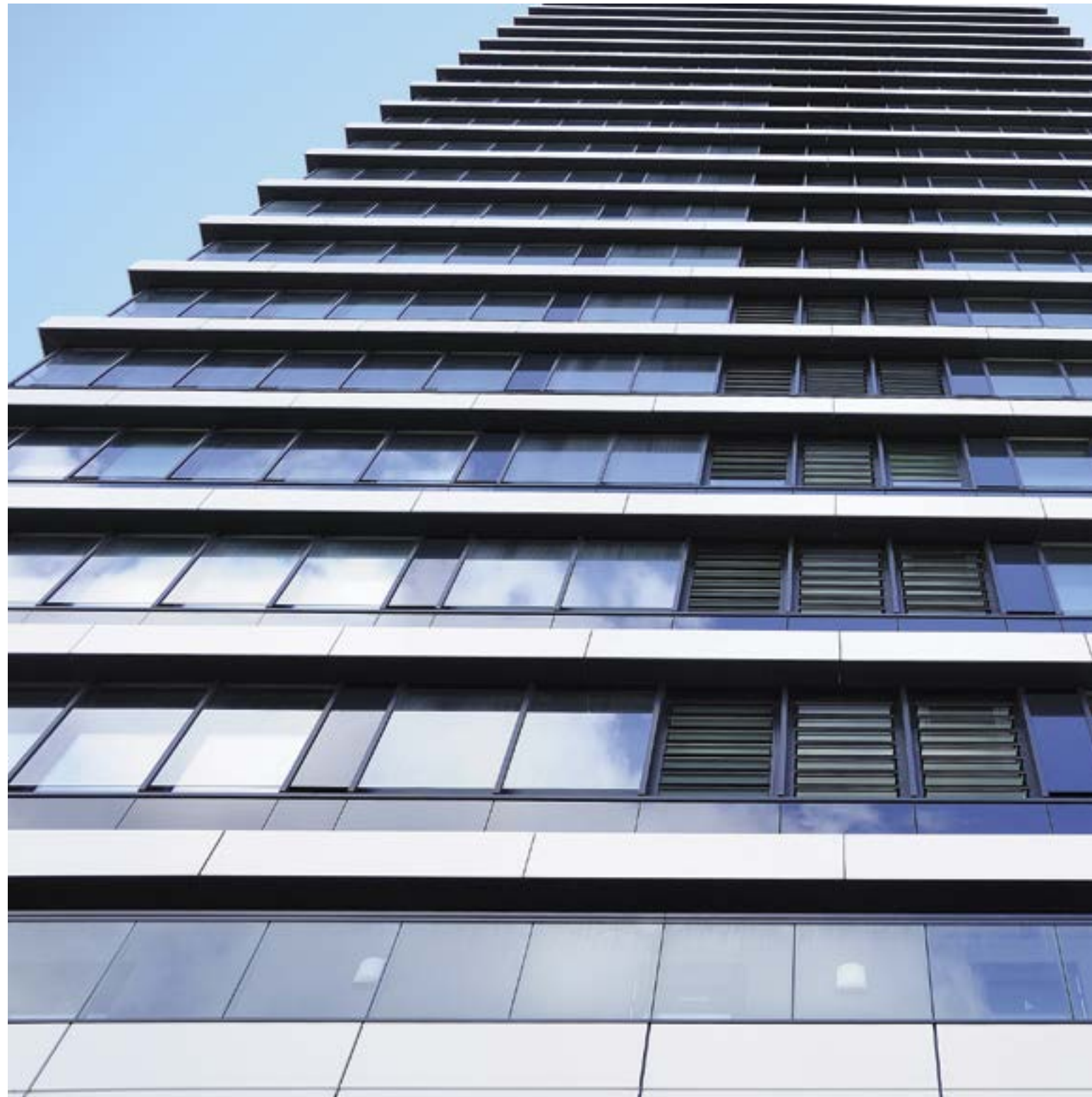




LOUVRE . VENT . TECHNOLOGY .



OPENING UP NEW PERSPECTIVES.



The reason why our employees come to work every morning – highly motivated and committed to what they do – is the same reason I founded this company in 2000: “We want to make things better.”

When I started FIEGER I only had one goal in mind – and this is no different today: **Not just to cultivate high standards but to set new quality standards, too.**

This spirit lives on to this day in our products, as well as in our principles of working together. Reliability, respect and trust on the basis of fairness and loyalty is not just an empty phrase for us, it is our day-to-day reality.

This is reflected in our many and long-lasting partnerships, as well as by the quality and originality of our products. Our motto is always the same, whether it involves traditional louvre vents, the use of novel louvre technologies or the development of new products: **If it is physically possible, then we can make it.**

IF IT IS PHYSICALLY
POSSIBLE, THEN WE
CAN MAKE IT.



Thomas Fieger | CEO FIEGER

Perhaps this may sound pompous to some, but how can you achieve anything if you don't have goals?

In any case, we still have a lot of plans for the future and some other complete solutions up our sleeve, which will surely convince you from both an aesthetic and economic point of view. For everything else, we have the ambition, the will and the expertise to develop with you the feasible out of what is imaginable.

My team and I look forward to working with you, taking on your challenging requirements.

**FIEGER – Louvre. Vent. Technology.
It works.**

FIEGER DOES NOT CHANGE EVERYTHING BUT LOOKS TO DO THINGS BETTER.



Picture credit: Gerhard Hagen, poolima



Knauf-Museum Iphofen: The rotary movement of the blades is created by the rack-and-pinion drive, developed by FIEGER. The compact nature of this element made it possible for the whole operating mechanism, including the motors and wiring, to be integrated within the curtain wall transoms.

FIEGER – Louvre. Vent. Technology. gives you a new insight.

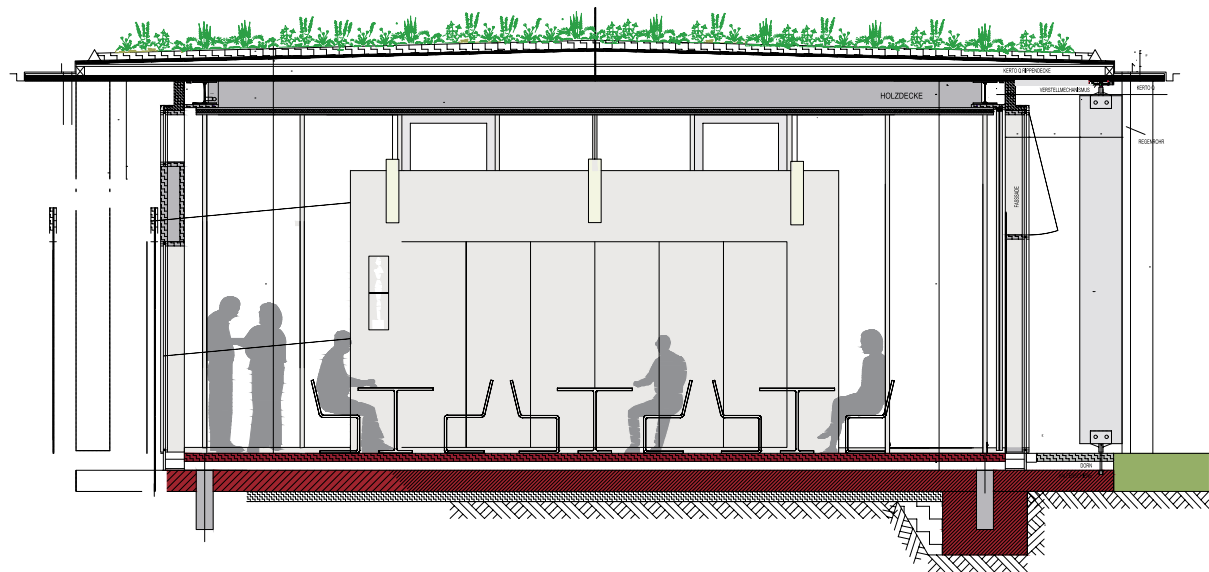
Our patents and countless recommendations are the expression of our innovative strength – worldwide. This is manifested in small or large projects, in made to measure applications, with our standard extrusions, or in bespoke solutions, in projects in Europe or across the world; e.g. in San Francisco, New York, Cape Town, Sydney.



Picture credit: Gerhard Hagen, poolima

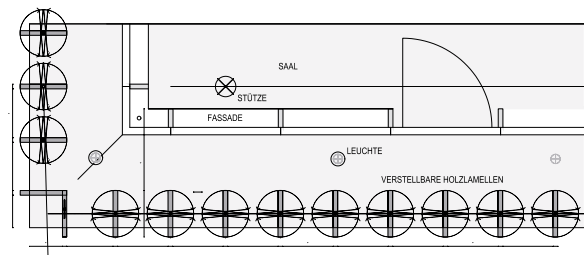
Knauf-Museum Iphofen: Large glazed surfaces are shaded internally, using aluminium louvres. These blades are decorated with laser-cut ornate abstract patterns and are installed throughout the building. Depending on the time of day, the appearance changes through the shading, which creates an exciting interplay of light.

FIGER CREATES PATTERNS OF LIGHT AND SHADE.



The considerate use of energy and natural resources is of growing importance.

Our patented products combine aesthetic appeal with maximum flexibility and functionality. A choice of materials is available (glass, aluminium, wood, etc.), to create the desired visual effect, both internally and externally, with louvres fitted either vertically or horizontally. Consequently, we can contribute effectively to achieving the right sort of environment, so that people feel at ease.



A design for GKT Architects of Würzburg as part of a feasibility study. FDS rotating vertical solar shading louvres, manufactured from engineered wood.



Sigmund-Freud institute Frankfurt:
Architect: Stefan Wagner,
completion 2015, FDS (rotating
vertical aluminium blades)

FIEGER MAKES PUPILS AND STUDENTS MORE INTELLIGENT.



Friedrich List School, Karlsruhe: The ventilation of the classrooms is provided solely using full height louvre windows. The vents are manually controlled by specially modified hand levers.



Karl Friedrich School, Mannheim:
Natural ventilation of classrooms.



Everyone knows how important oxygen is for the efficiency of the human brain.

Without adequate ventilation, oxygen levels in the classroom, lecture theatre and gymnasium can be quickly depleted. We have a solution for

this: intelligent louvre windows, which contribute, with control sensors, to always letting sufficient fresh air in whenever necessary. This leads to a positive impact on the mental and physical performance of the students.

FIGER MAKES BUILDINGS MORE SECURE.



*SIMPLY THROUGH
NATURAL CONVECTION –
FAST AND RELIABLE*

600 deaths a year through fires in buildings. 90% of casualties die from the effects of smoke, which not only impair vision but critically breathing as well.

Not surprisingly, fire protection of buildings is one of the most important legal requirements, because in the event of fire, every second counts to get people out of the danger zone. FIGER has the right products to

meet this requirement. Our certified SmoTec louvre windows provide fast and reliable extraction of smoke and toxic gases and ensure a smoke-free layer by exploiting the thermal effects in the fire zone, thus enabling people to escape.

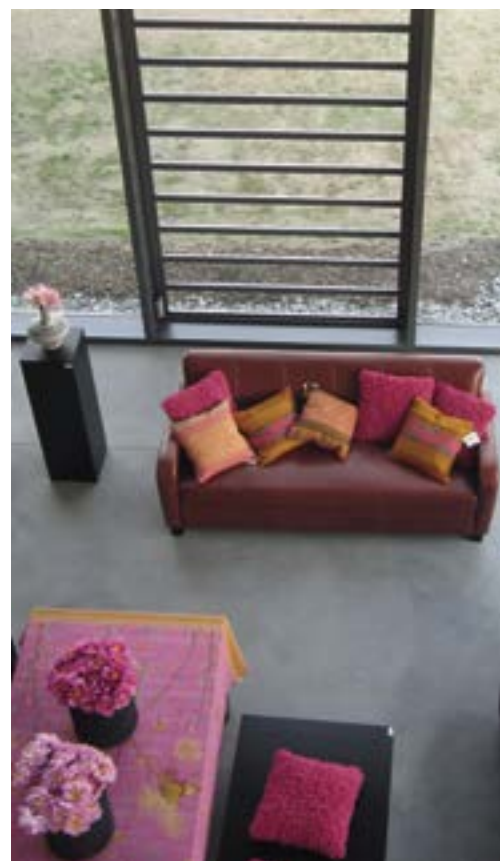


Rheinpark-Center Neuss: NSHEV louvre windows with sun protection glass for four rotundas. A special feature here is that all of the vents slope inwards without any adverse impact on performance.

FIEGER IMPROVES THE ENVIRONMENT.

Louvre windows can make a significant contribution to reducing harmful emissions as well as energy costs.

Together with innovative mechanics and sophisticated ventilation technology, we can take advantage of the laws of physics.



In an ideal situation, and given the right basic conditions, we can even make air conditioning superfluous. The new headquarters of a computer giant is currently being built in California - without the need for any air conditioning, but fully equipped with natural ventilation units, specially developed and designed for this building.



Furniture store in Hirschberg: The louvre vents provide day-to-day crossflow ventilation. The units have split controls, whereby the upper blades can be opened independently to operate as a night cooling system.



FIEGER MAKES VENTILATION INVISIBLE.



FLW²⁴ **Spiegel Ericusspitze Hamburg:** Louvre vents with an insulated panel infill for day-to-day ventilation and heat and smoke exhaust in case of fire, were installed on the roof. Approximately 100 m² of vents provides 59 m² of aerodynamic ventilation area.



FLW²⁸

3684 louvre windows serve as supply air elements above the facade in an office building in San Francisco. The ventilation concept stipulates that the opening angle of the louvres varies depending on the temperature. This obviates the need for air conditioning within the building. The concealed positioning creates an unbroken glazed effect on the external façade.



FLW²⁸

BMW World Munich: Louvre windows comprising a total of 1025 louvre blades and covering an area of 400 m² were installed on the roof. The vents were fitted behind a façade of perforated steel plates and ensure day-to-day ventilation and natural heat and smoke release in the event of fire.

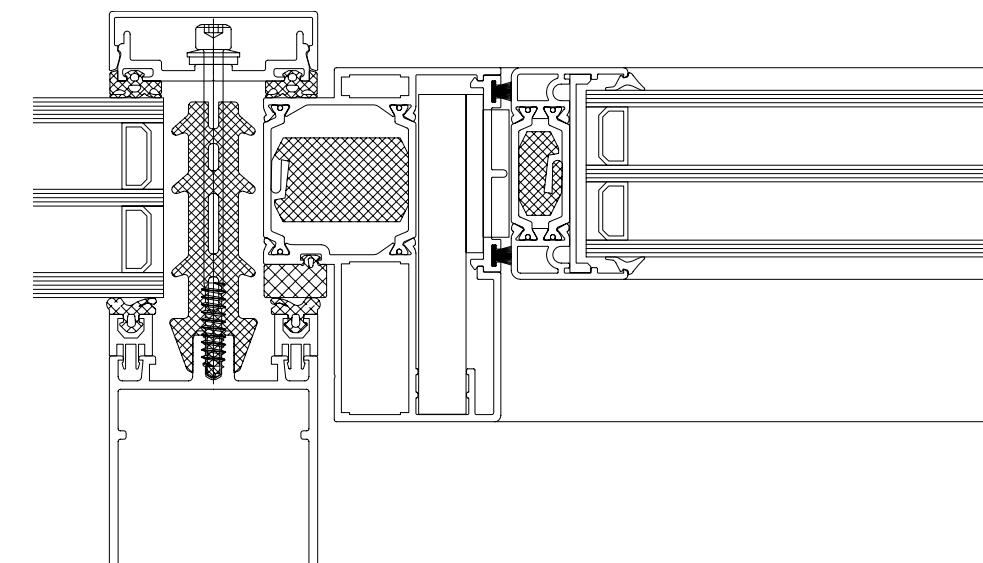
FIEGER ENABLES ARCHITECTS TO BE MORE CREATIVE.



LOUVRES OFFER A WIDE VARIETY OF DESIGN POSSIBILITIES

You have the ideas. We have the expertise to realize these ideas in terms of light and airflow.

Our operable louvre blades offer a wide variety of design possibilities, with regard to form, colour & function. Our products adapt to the application. It doesn't matter if you wish to use our products with transparent, opaque or colourful glazing or for shading or temperature regulation: there is the possibility to make an individual statement in terms of innovative architecture and classic house design.



Deutschhaus School by Wulf Architects, Würzburg: The glazed stair hall allows the light to go as far as the ground floor. The louvre windows fitted in the façade provide dual-purpose day-to-day ventilation and emergency smoke release in the event of fire.

FIEGER MAKES LIVING MUCH MORE INTERESTING.



Freisitz Lohmayer:
FLM bolted glass
brackets with stepped
glazing to create a
flush-face design.



HOMEOWNERSHIP IS STILL SOMETHING PRECIOUS

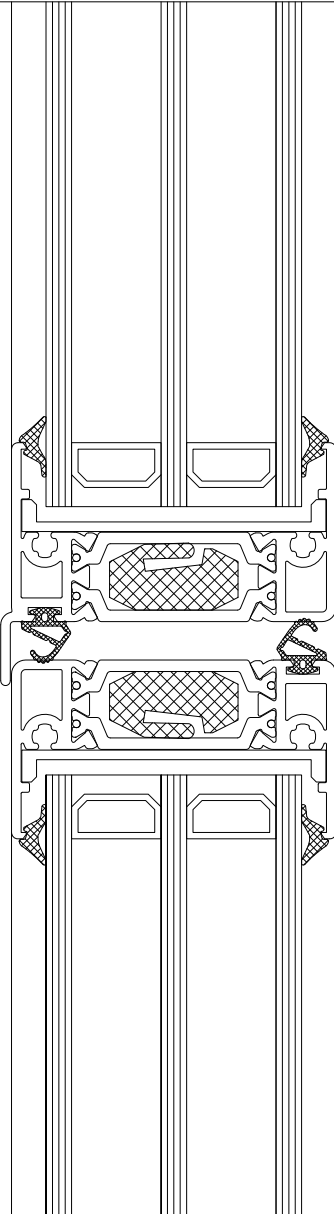
For most people it is the most expensive purchase of their life. Expectations therefore are correspondingly high in terms of comfort and enjoyment. FIEGER louvre windows can make a significant contribution to these expectations, because firstly they provide maximum comfort and secondly not everyone has them.



Residential Home Limberger: Natural Ventilator
with exceptional thermal insulation values.



FIGER MAKES WINDOWS MULTI-FUNCTIONAL.



You can tilt and open windows or look through them.

FIGER can do an awful lot more: conserve warmth, displace CO₂, save energy (and hence money), better resist forced entries, as well as precisely control the position of the blades via a BMS network. They offer a wide variety of design possibilities, which provide a sophisticated look to any façade no matter whether it involves our standard products or our bespoke solutions. In any event, they set new standards: economically, ecologically, visually and technically.

*FIGER SUCCEEDS
IN SETTING
SOPHISTICATED TRENDS*



Centre Hospitalier Bretagne Atlantique,
Vannes, France: NHSEV air inlet vents with
fall protection.

FIEGER MAKES CUSTOMERS HAPPIER.

We look forward to working with you!

FIEGER



FIEGER Lamellenfenster GmbH
Auf der Aue 10
D-69488 Birkenau i. Odw.
www.fieger-lamellenfenster.de