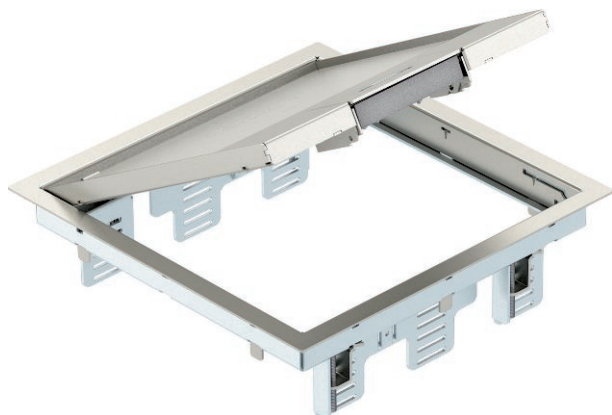


Technical data sheet

GES9M-2 service outlet with handle clamp

Art.-Nr. 7405371



Service outlet with handle clamp for up to 12 individual Modul 45 devices in 3 UT4 universal supports, use in duct systems and system floors.
Locking ladder made of galvanised sheet steel

A2 Stainless steel, rustproof 1.4301

Additional product text, instruction	Up to 9 installation devices with 50 mm central plate can be inserted.
Additional product text 1	

Master data

Item no.	7405371
Type	GES9M-2 10U
Description 1	Service outlet
Description 2	for universal mounting
Dimension	266x266x69
Material	Stainless steel, material no. 1.4301
Material symbol	A2
Smallest sales unit	1,00 Piece
Weight	360,00 kg/100 pc.

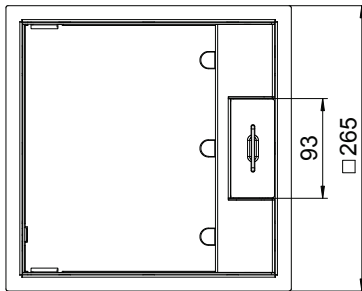
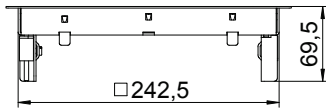
Technical data sheet

GES9M-2 service outlet with handle clamp

Art.-Nr. 7405371



Technical data



Length	265,00 mm
Width	265,00 mm
Height	67,00 mm
Wide external dimensions	265,00 mm
Wide installation dimensions	244,00 mm
Length of external dimensions	265,00 mm
Length of installation dimensions	244,00 mm
Number of installable devices	12,00
Number of mounting boxes	3,00
Floor covering thickness	10,00 mm
Floor covering protection frame	<input checked="" type="checkbox"/>
Floor care	Dry
Version for	Square
Seal installation option	<input type="checkbox"/>
Installation depth	78,00 mm
Floor height	78 mm
Device support to accept mounting boxes	<input checked="" type="checkbox"/>
Suitable for wet care	<input type="checkbox"/>
Suitable for screed-flush closed underfloor ducts	<input type="checkbox"/>
Suitable for screed-covered underfloor ducts	<input checked="" type="checkbox"/>
Suitable for raised floor installation	<input checked="" type="checkbox"/>
Suitable for cavity floor installation	<input checked="" type="checkbox"/>
Suitable for underfloor ducts	<input checked="" type="checkbox"/>
With floor covering recess	<input checked="" type="checkbox"/>
Nominal size for device installation units	9
Suitable for underfloor box	250/350
Opening mechanism	Handle
Frame version	Carpet protection frame
Schwerlastausführung	<input type="checkbox"/>
Typ des Einbausystems	MT4 / GB3