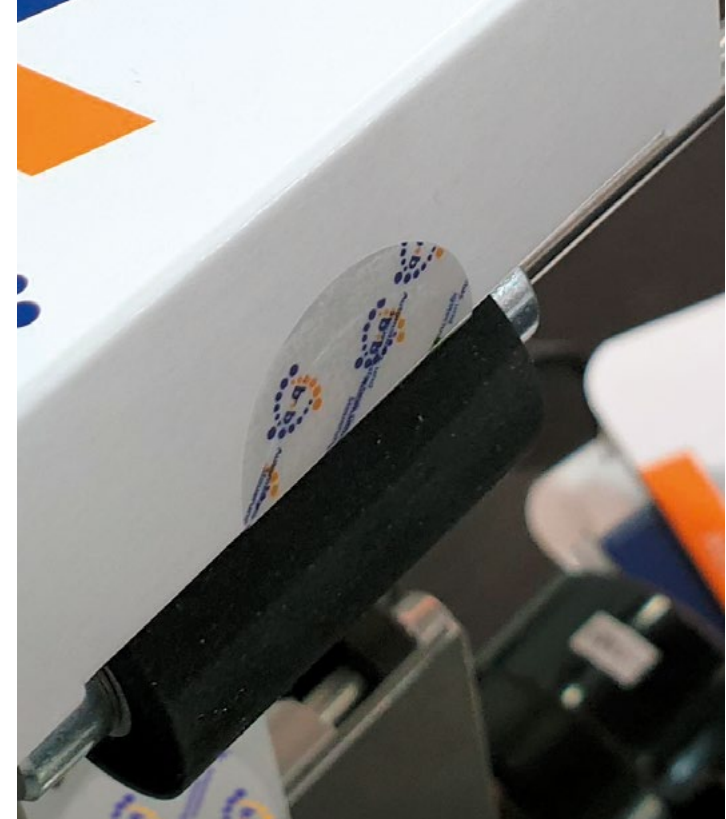


M-TE 80

The solution for smaller, decentralised labelling units:

- _seal labeling or bottom labeling
- _can be converted in just a few simple steps
- _ideal table label dispenser
- _reliable
- _handy with handle bar
- _non-slip stand
- _also suitable for transparent labels
- _easy change to other formats
- _repeatable application of the labels from product to product
- _economical solution



MODEL M-TE 80

MANUAL SEAL LABELLING |
BOTTOM LABELLING



b+b Automations- und Steuerungstechnik GmbH
Beerfelden Site I · Dieselstrasse 18 · Airlenbach Site II · Eichenstrasse 38a ·
64760 Oberzent (Germany)
phone: +49 (0) 6068 9310-0 · fax: +49 (0) 6068 9310-8990
info@bb-automation.com · www.bb-automation.com



S A F E
SERIALISATION
LABELLING
AUTOMATION

MANUAL LABELLERS

Especially for the labeling of small batches manual label dispensers are ideal - while fully automatic lines are converted to the product, the products are with this device already labeled.

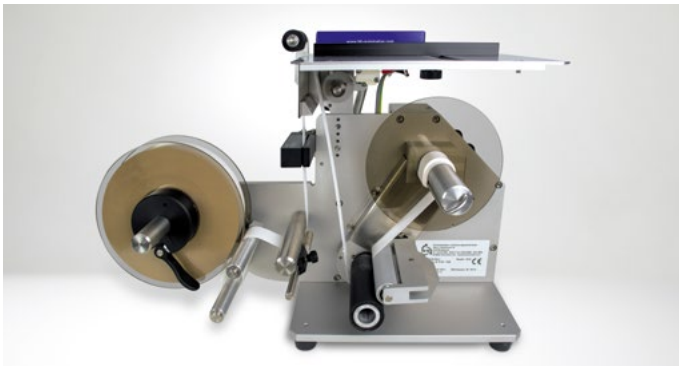


SEAL LABELING

POSSIBLE ON ALL LATCHES

The compact table unit was developed to seal boxes and small cartons in small batches with one or more sealing labels – while fully automatic lines onto the product be converted, are the products with this device already sealed.

The seal label can be placed on all latches.



M-TE 80/200 – seal labelling

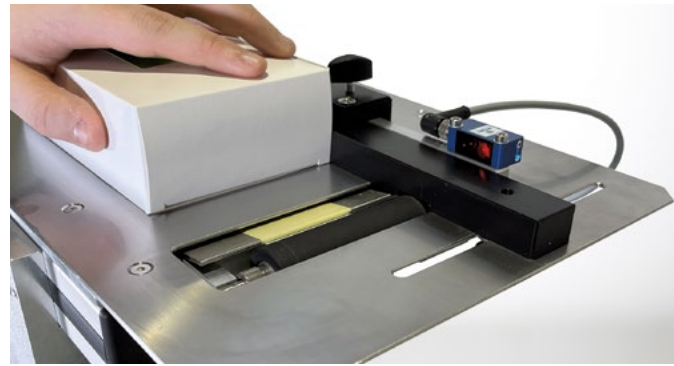
VIGNETTE LABELLING

FAST AND RELIABLE APPLICATION

Thanks to the development of a new dispensing head, the manual label dispenser M-TE 80/200 is now also available as bottom labeler for flat products.

Small batches can now be processed in no time at the bottom side to be labeled.

The manual dispensing device can be converted into a seal or bottom labeller in just a few simple steps.



M-TE 80 – bottom labelling

TECHNICAL DETAILS

MODEL VARIANTS

The manual label dispenser M-TE 80 is available in two models. The models differ in three points:

- carton sizes to be processed
- max. outer diameter of the label roll
- device size

Only the model variant M-TE 80/200 can also be used for underside labeling. The device can be used for underside labeling in just a few simple steps.

M-TE 80/200		Carton sizes: 40 - 300 mm
for transparent / non-transparent labels		
core diameter	76 mm	
max. outer diameter	200 mm	
max. label width	80 mm	
winding	außen	
power supply	230V - max. 0,5 A	

M-TE 80/300		Carton sizes: 20 - 490 mm
for transparent / non-transparent labels		
core diameter	76 mm	
max. outer diameter	300 mm	
max. label width	80 mm	
winding	außen	
power supply	230V - max. 0,5 A	

technical details of the model variants



M-TE 80/300 – seal labelling

status: 08.2022



M-TE 80 – bottom labelling