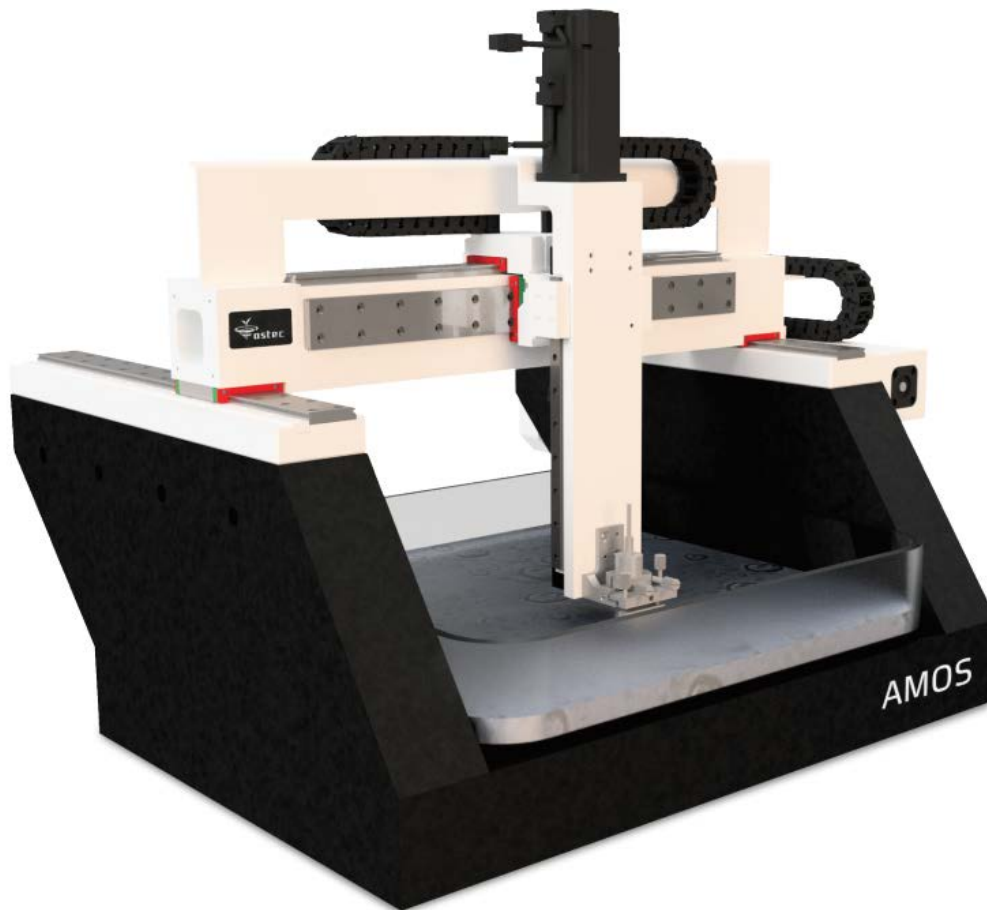


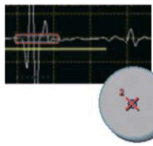
AMOS Scanning acoustic microscope



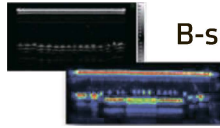
Mechanical parameters:

- XYZ resolution: 1 μm
- Working area of the device: 400x400x200 mm
- Travel speed: 500 mm/s
- Scanning speed: from 20 mm/s at 50 MHz frequency
- Set of adjustable trays with sample holders

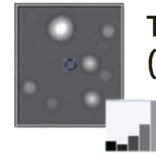
Applications:



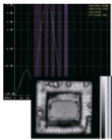
Real-time A-scan
& A-scan Capture



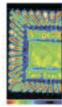
B-scan & SLICE



Threshold Mapping
(post processing)



Frequency Domain
Imaging (FFT)



C-scan with Multi-gate
SALI & SALI Groups



Cluster Analysis
(post processing)



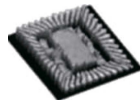
Advanced
Time-of-Flight
& Thickness
Measurements



Scan Math
Before and After Reflow
Characterization

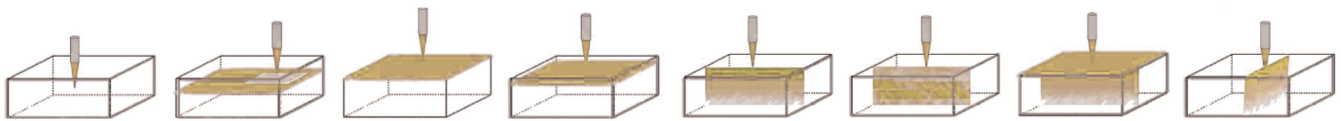


Void Gating
(real-time)



3D Imaging

Available modes:



A-Scan

Patch
Scan

Top
Scan

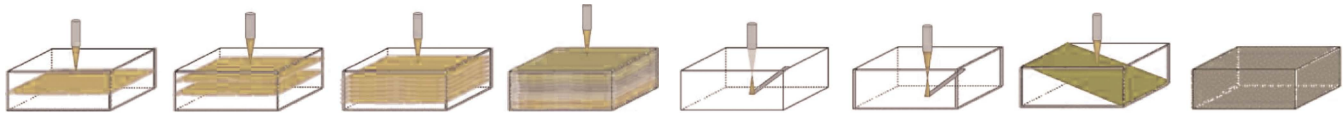
Counterfeit
Detection

B-Scan

Focus B

Sub B

Cross B



C-Scan

Dual
Gate

SALI

SALI
Groups

TX-Scan

Concurrent
PE/TX

D-Scan

3D

+ 7 (800) 700-65-55
info@ostec-instruments.com



future's
in the making

All configurations and specifications
are subject to change without notice

www.ostec-instruments.com