



Automation & Robotics

# Control Unit for Single Vision Semi-Finished Lenses

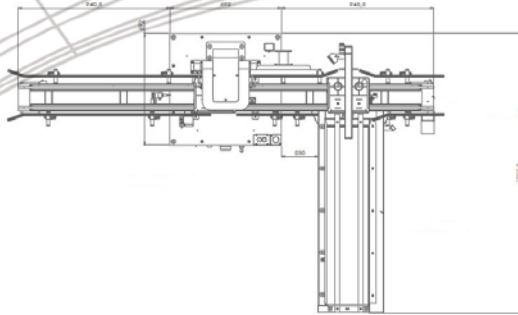
The control unit for single vision semi-finished lenses (MCSFU) is the perfect tool for the free-form laboratories.

With a capacity of more than 360 lenses an hour, the MCSFU detects any picking, supply or data error.

It measures, accurately and contactless, the radius of the front curve of the single vision semi-finished lenses. The measured data are directly transmitted to the LMS (Lab Management System) software so that the measured data can be taken into account for the calculation.



## Main Features



1. Job tray identification  
Loading of the semi-finished SV lens
2. Contactless measurement of the convex surface  
(LensMapper by Reflection)
3. Export of the measured data (VC DCS format)

Type: MCSFU

## Technical Specifications



Range : - diameter : 65-85mm  
- convex base : 0 to -14.5D\*  
(spherical and aspherical)  
- overall thickness : 7 to 25 mm  
- edge thickness : 7 to 25 mm

Accuracy : 0,02 D\* in the range from 0D to 10D and 0.04D in the range from 10D to 14.5D  
("spherical equivalent" power with 8 mm aperture)

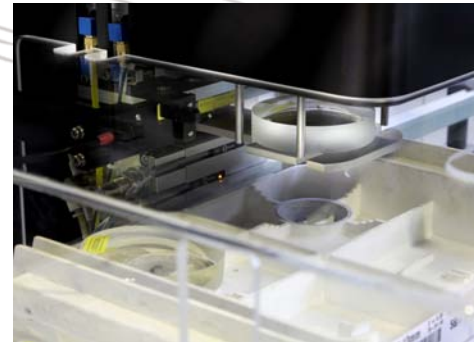
\* surface power calculated for 1.525 index

Capacity : 360 lenses/hour

Fluids & Energy :

- Compressed air : 2,5 bars - 3,5l/min  
(5,5l/min max.)  
(Quick fitting device 1/8 - Legris)
- Electricity : 220-240 VAC - single phase -  
100W - 50/60 Hz

## Advantages



- More accurate prescription lenses  
(real value taken into account)
- Less semi-finished rejected
- Tool to qualify your suppliers of semi-finished lenses
- Improvement of the production flow  
(better delivery times)
- Small footprint (L 700 x W 700 x H 1700 mm)
- Easy to integrate in the production flow
- Easy maintenance
- VC DCS (OMA) compatible

## Options & Extensions



- Conveyor for rejected lenses
- Ticket printer for rejected job