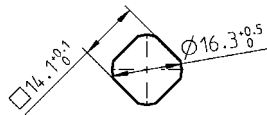
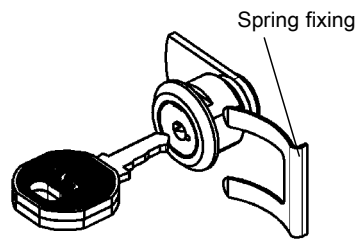
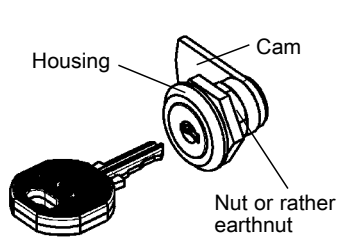


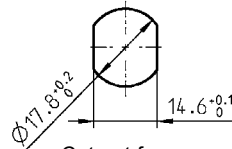
Cylinder quarter turn, small version

PROGRAM 1022

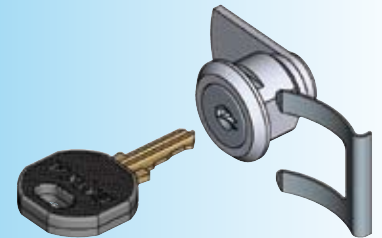
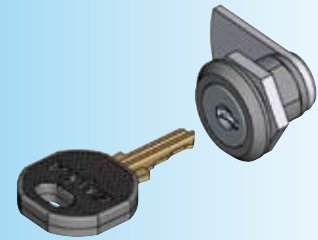
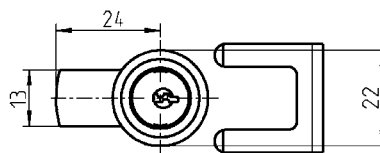
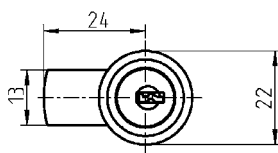
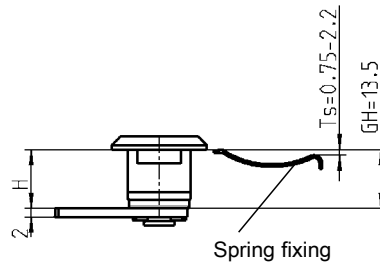
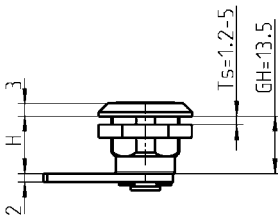
Beschlagteile



Cut out for nut fixing



Cut out for spring fixing



Cylinder quarter turn material on choice, zinc die chrome plated or polyamide GF black, round cylinder zinc die with stainless steel cap, nut or earthnut and safety washer m.s. zinc plated
 1) with one key silver steel and polyamide GF grip black
 2) with one key m.s. nickel plated

	H	Zinc die with nut	Zinc die with earthnut	Polyamide with nut
		1)	1)	2)
keyed 2233X	7,5	1022-U16	1022-U22	1022-U65
	13,5	1022-U17	1022-U23	1022-U66
	19,5	1022-U18	1022-U24	1022-U67
keyed different	7,5	1022-U19	1022-U25	1022-U68
	13,5	1022-U20	1022-U26	1022-U69
	19,5	1022-U21	1022-U27	1022-U70
	H	Zinc die with spring fixing		
		1)		
keyed 2233X	7,5	1022-U10		
	13,5	1022-U11		
	19,5	1022-U12		
keyed different	7,5	1022-U13		
	13,5	1022-U14		
	19,5	1022-U15		

Application area:
Small doors and panels

Further parts see page
– Spare key 12B-140