

Metal Bellows Coupling I Series KP

- /// 4-corrugation bellows // short design // high torsional stiffness
- /// simple installation with lateral EASY-clamping hub

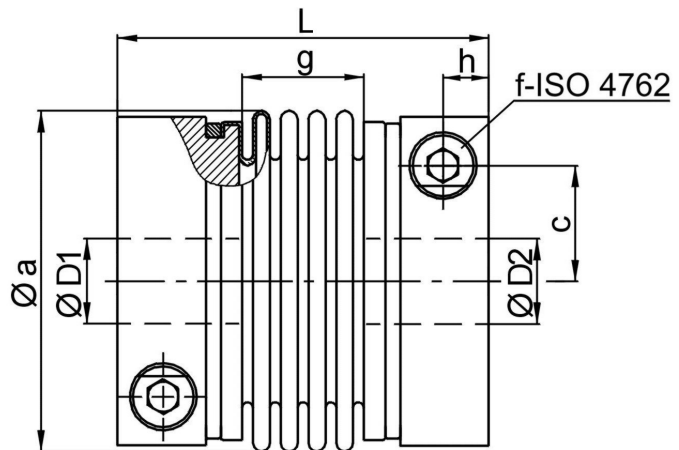
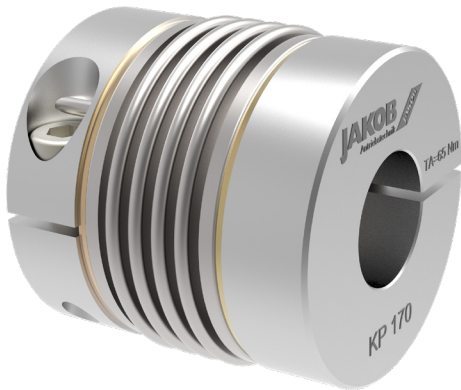
technical data:

KP size	TN [Nm]	moment of inertia [10 ⁻³ kgm ²]	torsional stiffness [Nm/arcmin]	max. shaft misalignment (mm)		axial spring rate [N/mm]	lateral spring rate [N/mm]	tightening torque of screws [Nm] (*)	nmax [upm]
				axial±	lateral				
25	25	0,064	4	0,5	0,15	36	180	8	19000
35	35	0,13	9	0,5	0,2	70	450	14	17000
60	60	0,27	14	0,6	0,2	70	650	35 (30)*	16000
100	100	0,35	20	0,6	0,2	110	1200	35 (30)*	13500
170	170	0,76	28	0,8	0,2	98	1000	65 (50)*	12000
270	270	2	52	0,8	0,2	90	1300	115 (90)*	10000
400	400	2,15	74	0,7	0,2	135	1500	115 (90)*	10000
600	600	5,0	106	0,7	0,2	140	2800	180 (140)*	8000
900	900	9,0	156	0,8	0,2	210	3050	180 (140)*	7500

smaller couplings from 2 Nm - 12 Nm see series MKP

(*) note: reduced tightening torque for bigger hub bore diameter - see also $\varnothing D/2$ max!
size KP 25 - with 5-corrugation bellow and optional with EASY-PIN.
temperature range: -40°C up to +200°C

material:
hubs: high-tensile strength aluminum
bellows: stainless steel
screws: ISO 4762 / 12.9



Dimensions [mm]: length dimensions according to DIN ISO 2768 cH

KP	Øa	c	f	g	h	L	L*	mass ~ [kg]	ØD1/2 min	ØD1/2 max
25	50	17	M 5	24	6	58	-	0,18	10	28
35	56	19	M 6	21	8	61	72	0,3	10	32
60	66	22	M 8	23	9	67	77	0,4	13	28 (35)*
100	71	25	M 8	23	9	68	-	0,5	14	30 (38)*
170	82	28,5	M 10	28	11,5	80	92	0,8	18	32 (43)*
270	101	35	M 12	29	13	87	93	1,3	25	42 (55)*
400	101	35	M 12	33	13	91	97	1,4	28	42 (55)*
600	122	42	M14	36	16	104	-	2,3	32	55 (68)*
900	133	47	M14	37	18,5	127	-	3,3	40	65 (75)*

note: L* \neq variable length with bigger clamping hub size (see order example)

order example: KP 170 - D1 = \varnothing 28^{G6} D2 = 35^{G6}
KP 170 | 92 - D1 = 32^{G6} D2 = 42^{G6}