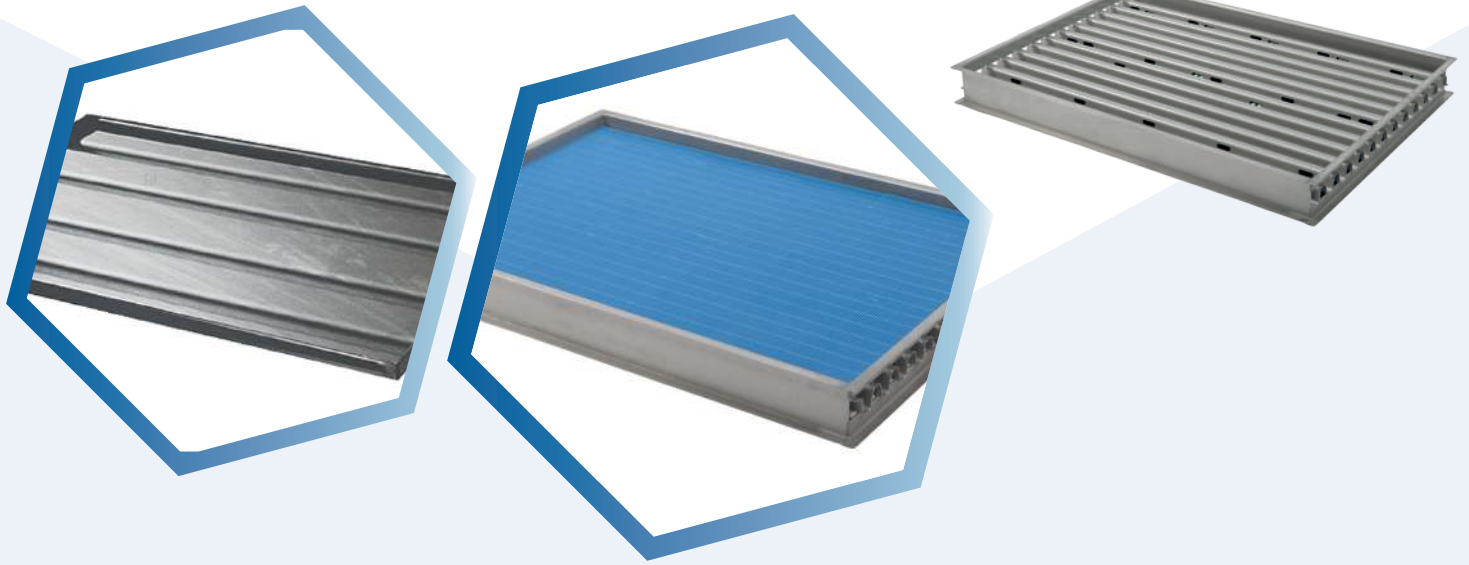




DRAINING TRAYS

STAINLESS STEEL - ALUMINIUM



Designed and manufactured by Servi Doryl since 1972, the trays allow a peripheral draining by means of transverse grooves. They can be used with a draining mat and are suitable for mechanised lines.

RANGE

- Single-sided trays
- Double-sided trays

USE

Moulding and draining of cheeses in moulds, block-moulds of all shapes

MATERIALS

Stainless steel or aluminium

MAX. DIMENSIONS

- Length (stainless steel) : 995 mm
- Length (aluminium) : 1100 mm
- Width : 600 mm
- Thickness (stainless steel) : 1.2 or 1.5 mm
- Thickness (aluminium) : 3 mm



Made of stainless steel or aluminium
Materials suitable for heavy products
Very high rigidity



Cleanability foreseen from the design phase
Easy maintenance, fast drying



Possibility of turning in stack with a double-sided model
Safe movement on mechanised lines
Optimum drainage



Recyclable materials, controlled recycling circuits
Possibility to take back trays at the end of their life
Reduction of the environmental footprint

