



Automation & Robotics

ProMapper™

The ProMapper™ is the A&R table-top solution dedicated to all Rx labs whatever their size. It provides state-of-the-art optical inspection according to the industry standards (ISO/ANSI), totally independent from the operator.

In addition, it supplies freeform surface evaluation based on the A&R Error Map technology, making sure that no surface defect is shipped to the customer.

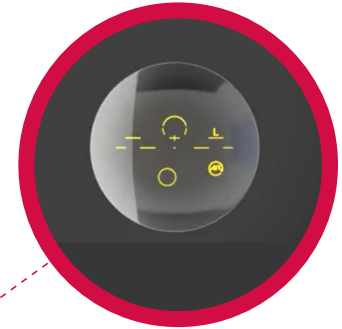
Based on the Error Map, surface quality features like the GMC (Global Mapping Criteria) are evaluated and constitute extremely relevant inspection data for Statistical Process Control applications (SPC), maintenance and troubleshooting.



ProMapper



ProMapper_Ink



ProMapper_Block



Main Features

Technical Specifications

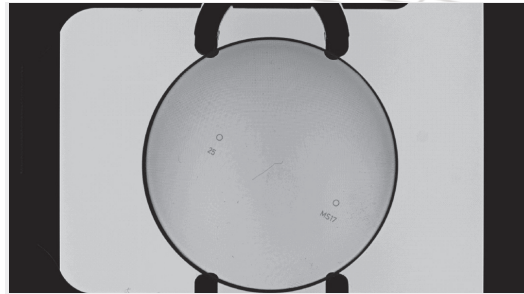
Benefits

Versions



- Total inspection of lens optical and geometrical properties, including power, prism, addition, thickness, shape and polarization axis.
- Freeform surface evaluation with Error Map and Go/NoGo.
- Powers given in Focus-On-Axis configuration, according to the Standards.
- Automatic detection of the permanent markings or multifocal segment.
- Upload of measurement values and surface quality features like the GMC (Global Mapping Criterion) for statistical process control applications, maintenance and troubleshooting.
- Off-line Viewer : visualization of Theoretical, Measured and Error Maps + Mapping Criteria

Types: ProMapper™ (inspection)
 ProMapper™_Ink (inspection and inking)
 ProMapper™_Block (inspection and blocking)



Range
 Any type of organic lenses, any shape :
 SV, PAL's, multifocal (freeform or conventional)
 Lens size : max. dia 82 mm, min. B-size 18 mm
 Maximum power for positive axis : +12D
 Minimum power for negative axis : -12D
 Cylinder : 0 to 4D
 Max prism at PRP : 5Δ
 Max overall lens height : 20mm

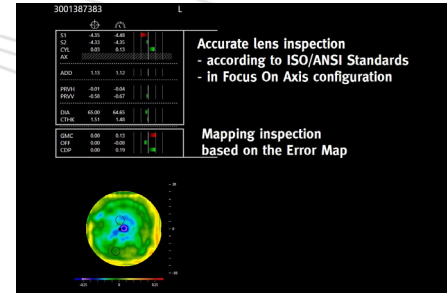
Accuracy
 Diameter: 0.3 mm
 Sph. equivalent and cyl. power : 0.03D to 6.00D
 0.04D to 12.00D

Prism: 0.03 Δ + 1%
 e-line or d-line
 Thickness: 0.03mm

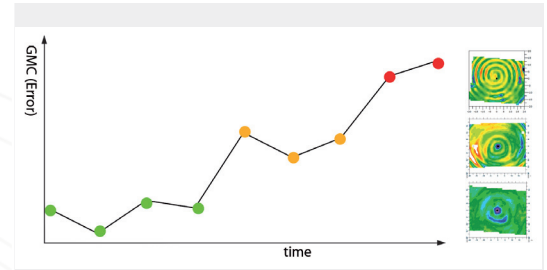
Error Map
 Covered area: 60mm from -12D to +5D,
 40mm from +5D to +10D

Throughput :50 sec. / job
Instrument size: H 776 x L 737 x I 618 mm
Net weight: 62 Kg (67Kg with inking module)

VC-DCS compliant, CE certified
 Power : 110 – 240VAC (50/60Hz) - 0,2 kW



- Newest A&R technologies in a table-top inspection device
- Reaching the highest quality of lenses with accurate lens inspection (ISO/ANSI standard compliant)
- Total operator independence with automatic positioning and automatic decision
- Freeform evaluation to make sure no surface defect is shipped
- Extremely relevant inspection data like the Global Mapping Criterion for process control applications, maintenance and troubleshooting.
- Industrial design – not dust/dirt sensitive
- Contactless measurements – also suitable for non-coated and high index lenses
- Gripper designed to handle any lens shape
- Super easy to use and to calibrate
- Automatic detection of the permanent markings or segment
- Easy to connect (OMA-DCS)
- Flexible inking (also for cut lenses)
- Accurate centering and blocking



- ProMapper™:**
- lens inspection according to the ISO/ANSI Standards
 - mapping inspection (GMC/Go-NoGo)
- ProMapper™_Ink:**
 including a wax digital inking module
 Dual Step printing technology :
- excellent image quality (high resolution)
 - better adhesion on hydrophobic coatings
- Additional cycle time : 3 secs/lens
- ProMapper™_Block :** available soon
 including a blocking module (before edging)



- TARGET «ZERO DEFECT» :**
- Highly accurate automatic inspection
 - Optimal production process (detection of drift)
 - No surface defect shipped to the customer

For information purpose only.
 Specifications subject to change without prior notice.