

VisioCablePro®

AVAILABLE AS FROM

NOW

α ONE

THE NEW ALPHA SERIES. THE NEW FLEXIBILITY.

The new **AlphaOne** - the combination of precision and flexibility. With the compact and simultaneously highly precise measuring device for **cross section measurements of cables and hoses**, you receive new possibilities in your quality assurance process. Configure a measuring device individually adapted to your extrusion line. **Save material costs** together with maximum flexibility.



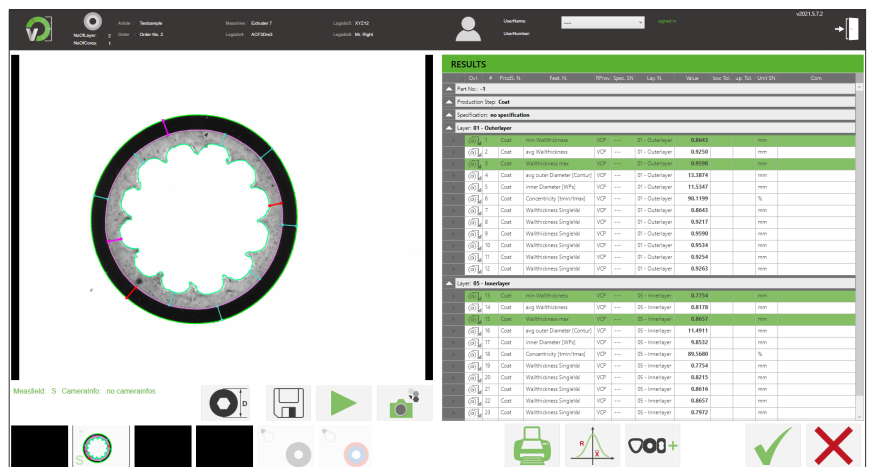
ALPHA ONE FACTS.

- One measuring field - customer specified
- Quick and very easy measurement
- Compact design - especially suited for the use at a production line
- Measurements according to standards IEC 60811 -201; -202; -203, LV112, ICEA S-94-649
- Suitable for all VisioCablePro® software
- Various external CAQ software are connectable

NEW SOFTWARE INCLUDED.

VELOX

Our new **software VELOX** helps you evaluate obtained test results from our cable measuring devices securely and is always **included**, when buying one of our products from the **VisioCablePro® Alpha series**. Therefore, VELOX is your guarantee for secure quality testing of geometrical attributes of cables, isolated conductors, hoses and pipes.



CONTACT.

**iim MEASUREMENT
ENGINEERING**

iim AG measurement + engineering
Neuer Friedberg 5
98527 Suhl
GERMANY



(+49) 3681 / 455 19-0



VisioCablePro.Sales@iimAG.de



www.cable-measurement.com



**AUTOMATIC
CABLE MEASURING
DEVICES**

PRODUCT COMPARISON



AlphaOne



VCPX5

MEASURING FIELD	one measuring field, between 0 and 130 mm (0-5.11") for example: 1-5; 3. 5-18; 5-24; 7-34 mm (0.04-0.2; 0.1-0.7; 0.2-0.9; 0.3-1.3")	up to 3 measuring fields, between 0 and 130 mm (0-5.11")
CAMERA	one camera	up to 3 cameras
MULTI-LAYER CABLE SAMPLES	(✓)	✓
FRONTLIGHT AND BACKLIGHT	✓	✓
AUTOMATIC LIGHTING Directly programmable via the database	✗	✓
COLOUR IMAGES Using an intelligent color lighting for complex, multi-layered samples, colour images are generated despite a Black&White camera.	✗	✓
DATABASE CONNECTION	is possible	is possible
INTEGRATED PC	✗	✓
INTERFACES	1x USB 3.0 (Connection to control PC)	4x USB 2.0 for peripheral devices 1x Ethernet
OPERATION VIA TOUCH PANEL	✗	✓
INTUITIVE OPERATION & EASY USER TRAINING	✓	✓

CONTACT.



iim AG measurement + engineering
Neuer Friedberg 5
98527 Suhl
GERMANY



(+49) 3681 / 455 19-0



VisioCablePro.Sales@iimAG.de



www.cable-measurement.com

