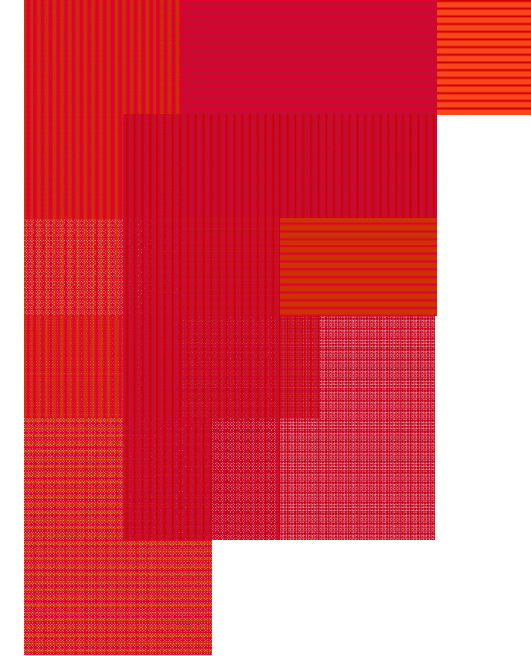
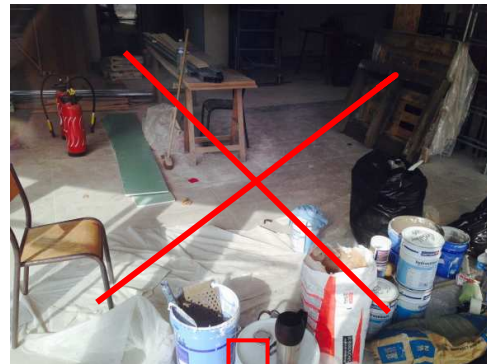


Diplast "B"

PP corrugated sheeting for Building



FLOOR-, WALL AND WINDOW PROTECTION



To provide an excellent impact protection (falling tools, scratch resistance, tire marks...) in a renovation building site with neither wrinkling nor easy tearing, just lay PP Diplast corrugated sheets (20sqm in 5 mn).

A translucent corrugated sheet placed against a window for protection lets daylight in, enabling the detection of objects in a dark building site.

A fire resistant sheet is recommended in sites exposed to welding sparks.

Black corrugated sheets are made of more than 50% reground PP and thus reduce their carbon footprint by half.

Heavy duty reusable protective boards can be jet washed and moved from site to site. Ask for the specific leaflet.



- Waterproof, holds spills and protects against wet foot traffic,
- Safe working on a flat surface,
- Easy to cut (the black sheets must be at least during 24h in an ambient temperature $\geq 15^{\circ}\text{C}/60^{\circ}\text{F}$).



Technical Data are just for information. Distriplast may make modifications. Building122016

DIPLAST "B" for BUILDING



Distriplast is unique in its exclusive focus on the Polypropylene (PP) corrugated sheet continuous manufacturing throughout the year. Distriplast markets a comprehensive programme of solutions for construction.

A DIPLAST® sheet is made out of Polypropylene, a clean, light weight, cheap and completely recyclable material which resists moisture and greasy environments. It is particularly convenient for the building sites.

Certified ISO9001:2008 and ISO14001:2004, Distriplast is a member of Beaulieu International Group and is situated in Dunkirk (F).



Type	> < (mm)	◆◆◆	📄	↔ current (mm)°	Use
BLD2-240	1,8±0,2	◆	570	2400//x1200	floor
BLD2-250	2±0,1	◆	525	2400//x1200	floor
BLL2-250	2±0,1	◇	525	2400//x1200	LPCB: LPS1207 Issue 3 FR cert. #1353
BLM2-270	2±0,1	◆	525	2400//X1200	M1 FR
BMD3-350	3±0,1	◆	300	2400//x1200	Floor with medium heavy duty
BHD4-650	4±0,1	◆	260	2400//x1200	Floor with heavy traffic/scaffold

Other sizes/colours from $\approx 2000\text{m}^2$: Length (flute direction) Mini 0,7m, Maxi 7,5m (or rolls 50m long). Possible width up to 3m.

Tolerances: Length-width $\pm 5\text{mm}/\text{m}$ ($> \pm 5\text{mm}$ & $\pm 1\text{flute}/\text{width}$), Diagonal $\pm 5\text{mm}/\text{m}$, Weight $\pm 5\%$ ($\pm 10\%$ selectively).

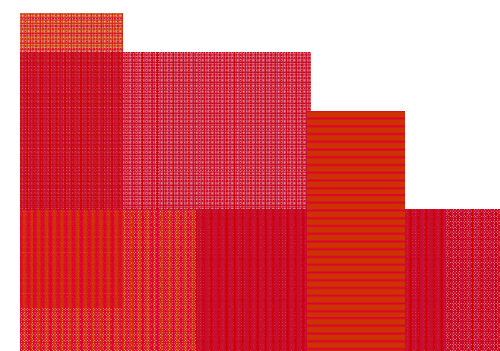
Packaging: Series Building Heavy/Medium/Light Duty (BHD-BMD-BLD): On a wood pallet, PE stretchable film + PE cap.

Distriplast Flandre SAS, Z.I. Petite Synthe, BP 20106 F - 59944Dunkerque Cedex 2 | www.distriplast.com
Distriplast.flandre@bintg.com - T +33 (0)3 28 29 24 80 - F +33 (0)3 28 25 19 93
TVA FR 10349077941 - SAS au capital de 6 900 000€
RCS Dunkerque 89B7 - Siret 349 077 941 00012 - NAF 252A
BIC : NATXFRPP, IBAN : FR76 3000 7999 9904 2085 9100 077



Wide PP sheet-Programme for Construction

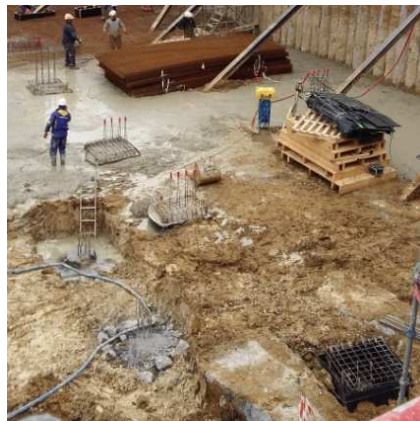
- Beam formwork
- Fencing, construction panel
- Lid for continuity strip casing
- Floor, Wall and Window protection
- Reusable Floor Protection



Diplast "B"

PP corrugated sheeting for Building

BEAM FORMWORK



Contractors use more and more PP integrated (*lost*) casings:

- Fast and effective means of forming ground beams and pile caps,
- Lightweight,
- Easy to cut on site,
- Security enhanced by absence of nails and splinters,
- Less rising damp.



Type	> < (mm)	◆◆◆◆	📦	↶ current (mm) ¹	Use
BHD10	10±0,1	◆◆◆◆	70	3000//x2400 ²	Heavy duty ground beamform
BMD10	10 +0/-0,5	◆	70	2700//x2400	Ground beamform
BMD8	8±0,1	◆	85	2200//x2400	Ground beamform, earthwork
BMD7	7±0,1	◆	40	4000//x2400	Formwork

¹ Other sizes: length (flute direction) Mini 1.2m, Maxi 7.5m, from 700m² (with width 2400mm).

² Colours on request: length (flute direction) Mini 1.2m, Maxi 7.5m, from 700m² (with width 2400mm).

Tolerances: Length-width ±5mm/m (>±5mm & ±1flute/width), Diagonal ±5mm/m, Weight ±5% (±10% selectively).

Packing : Serie Building High/Medium Duty (BHD-BMD) from 8mm : On a pallet, 2 PP-straps + PE stretchable film + PE cap. 📦 Pallets may be replaced like BMD7 by bundles on wooden bearers to optimize transport (bigger load, no stretchable film), storage, time and reduce waste on the building site.

FENCING, CONSTRUCTION PANEL



Fencing with Diplast prevents sight on the building site whilst, being translucent, enabling light transfer.

Graffiti, posters on a PP-surface may be removed easily.

UV - treatment on request.

- Brightness/Security of passageways
- Background noise reduction
- Easy cleaning.



Type	> < (mm)	◆◆◆	📦	↶ current (mm)	Use
BHD10	10±0,1	◆◆◆	70	2100//x2400 ³	Hoarding
PHD5	5±0,05	◇	200	3000//x2000	Panel
PHD8	8±0,1	◇	85	3000//x2000	Panel

³ Building Light Duty (BMD) : length (flute direction) Mini 1.2m, Maxi 7.5m, from 700m² (with width 2400mm)

Tolerances: Length-width ±5mm/m (>±5mm & ±1flute/width), Diagonal ±5mm/m, Weight ±5% (±10% selectively).

Packing : On a pallet, 2 PP-straps + PE stretchable film + PE cap. Serie PHD : additional PP protective sheets.

For the construction panel to let print (PHD), the Corona 42 Dynes treatment is guaranteed 6 months following receipt. On stock.