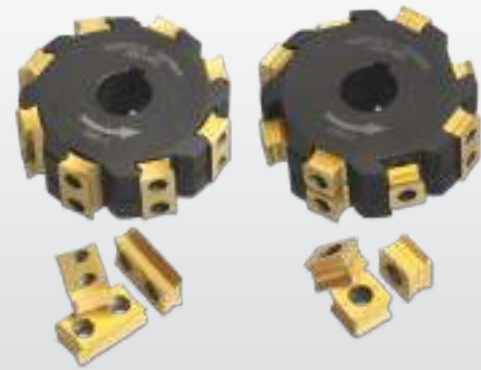
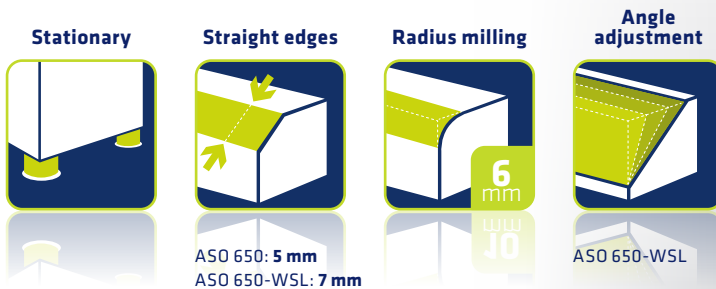


# ASO 650 | ASO 650-WSL

## Chamfering Machine with V-prism for Straight Edges

Deburring and chamfering of big workpieces is an easy job. Rounding of edges in use with radius inserts is also possible. Speed control is very useful when processing aluminum or stainless steel.



### Applications

- ▶ Minimum workpiece thickness 2 mm
- ▶ Clean and burr-free chamfering
- ▶ Suitable for sturdy continuous operation
- ▶ For preparing welding seams
- ▶ For short or thin workpieces below 5mm, the guide rails must be rotated and used with a 2mm cutting gap





ASO 650

### Professional advantages

- ▶ Axial adjustment of the cutter head for full utilization of the cutting inserts
- ▶ Chamfer adjustment by micrometer screw
- ▶ For continuous operation

Further accessories can be found in our **Accessory Catalogue**.

### Features

- ✔ Sturdy cast iron construction with swarf drawer
- ✔ Wear-resistant, hardened and ground guide rails
- ✔ Precise chamfer adjustment by micrometer screw
- ✔ Various cutting inserts for different materials
- ✔ Long useful life due to sturdy square cutting inserts and circumferential cut

### Options

- ✔ Automatic feed
- ✔ Radius cutting inserts R1,2-6 mm

### Delivery contents

- ✔ Allen key 4 mm
- ✔ Side-and-face milling cutter KX/DL equipped with cutting inserts
- ✔ Operating manual

### Technical data

	ASO 650	ASO 650-WSL
Motor	0.75 kW   2,800 rpm	0.95 kW   0 - 6,000 rpm
Energy	400 V, 50/60 Hz	400 V, 50/60 Hz
Maximum chamfer width	5 mm	7 mm
Angular adjustment	45°	15° - 45°
Dimensions (LxWxH)	400 x 500 x 300 mm	400 x 500 x 300 mm
Weight	52 kg	55 kg
Item no.	10229	10230



ASO 650-WSL