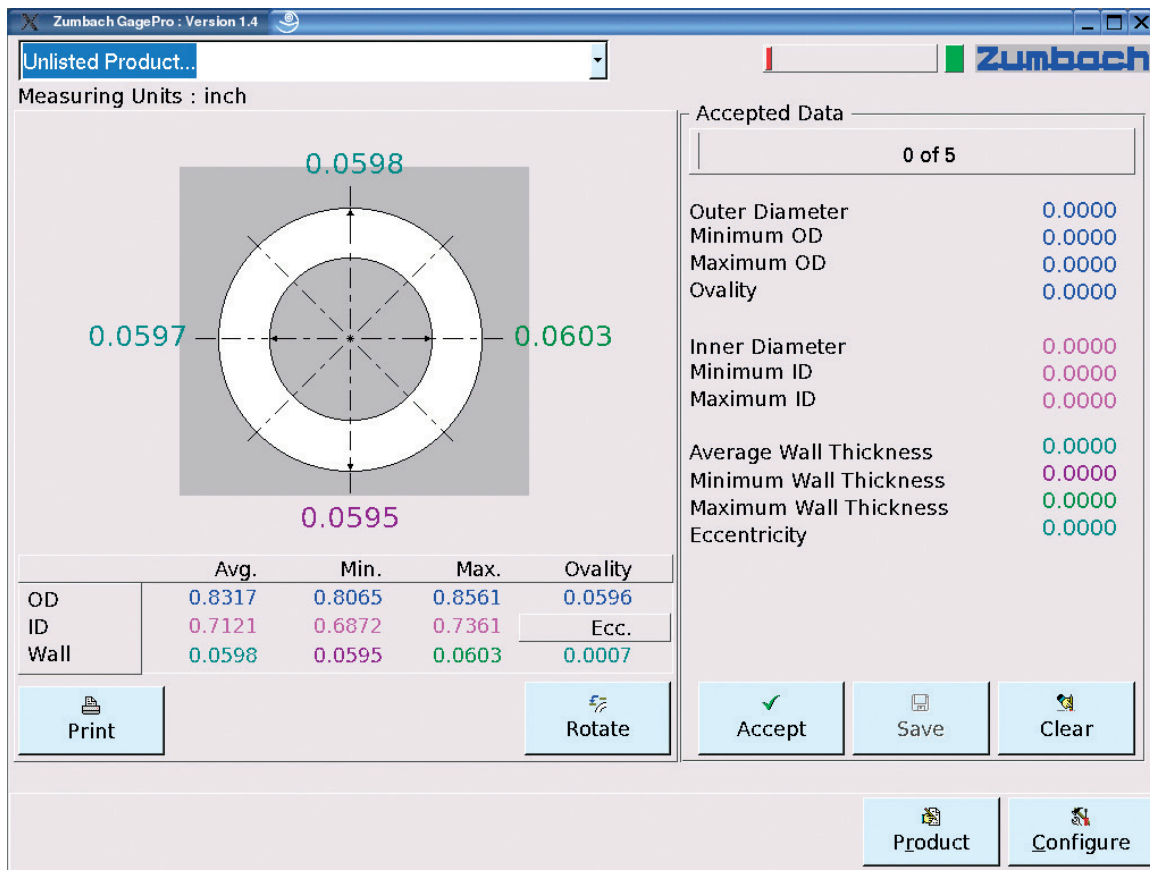


GaugePro 8/22

GaugePro is an expert measuring system for off-line use, an invaluable OD-ID-WALL Gage to instantly measure and record all critical geometrical parameters of tubular samples. Segments of tubing, hose, small pipe and more are measured with ultrasonic speed and accuracy.



Applications

- Medical tubing
- Packaging tubing
- Shrink tubing
- Rubber tubing
- Hose
- Small Pipe and more

Within seconds, **GaugePro** provides you with:

- **Wall Thickness** (measured at 4 or 8 points) average / minimum / maximum
- **Inner Diameter** (average)
- **Outer Diameter** (average)

11 values are derived carefully from 4 simultaneous measurements or computed with an accuracy and a repeatability which cannot be achieved on soft or semi-rigid material with conventional contact measuring systems such as micrometers, dial gauges or calipers.

For increased coverage of the product circumference, **GaugePro** features an eight point wall thickness measurement mode.

GaugePro is a true non-contact measurement without deformation of the specimen under test.

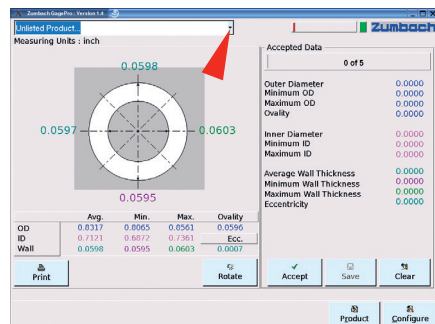
The system features a unique self-calibration algorithm.

Simple sample preparation and easy loading of the gauge yields a QC productivity level never achieved before.

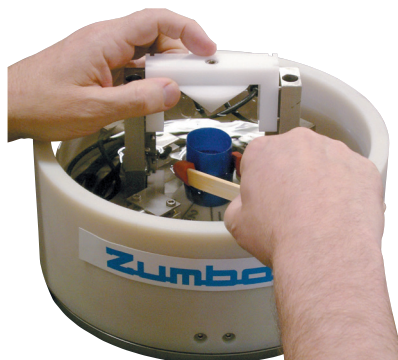
Never could the vital dimensions of a tubular product be measured so precisely in such a short time!

GaugePro is a unique solution, providing highly accurate dimensional measurements in just a few seconds, utilizing the well-proven UMAC CI processor, a versatile product sample holder and a dedicated user interface, and it is... as easy as 1, 2, 3...

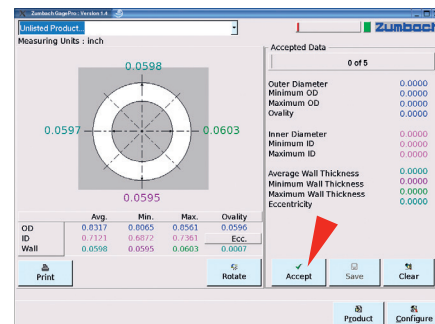
1. Select product



2. Insert sample



3. Accept measurements



GaugePro measures most materials incl. plastics, rubber, metal and more

Impartial precision measurements: Easy – Fast – Simple – Dependable

Main Data

Specifications	GaugePro 8	GaugePro 22	
		Range A***	Range B***
Minimum tube inside diameter (ID)	1.4 mm (.055 in.)	2.2 mm (.086 in.)	6.0 mm (.236 in.)
Minimum tube outside diameter (OD)	2.5 mm (.1 in.)	3.6 mm (.142 in.)	6.8 mm (.267 in.)
Maximum tube outside diameter (OD)	8 mm (.31 in.)	6.5 mm (.256 in.)	22 mm (.866 in.)
Minimum wall thickness (WALL)*	0.5 mm (.020 in.)	0.4 mm (.015 in.)	0.4 mm (.015 in.)
Repeatability wall measurement**	0.002 mm (.00008 in.)	0.003 mm (.00012 in.)	0.0035 mm (.00014 in.)
Repeatability OD/ID measurement**	0.002 mm (.00008 in.)	0.003 mm (.00012 in.)	0.0035 mm (.00014 in.)
Measurement error	< ± 0.001 mm (.00004 in.) < ± 0.02 %	< ± 0.001 mm (.00004 in.) < ± 0.03 %	< ± 0.001 mm (.00004 in.) < ± 0.035 %
Each GaugePro includes a standard to verify the calibration of the system.			
Materials	Most solid/homogenous materials including plastics, rubber, metal etc.		
Measuring Device			
Dimensions	Diameter: 330 mm (13 in.)		Height: 248 mm (9.75 in.)
Weight	8.5 kg (19 lbs.)		
UMAC CI Signal Processor			
Repeatability wall measurement	< ± 0.001 mm (.00004 in.)		
User interface	PC with flash memory, 15 in. LCD color screen		
Networking	TCP/IP Ethernet		
Power supply	114 ... 240 V ~, 50/60 Hz.		
Dimensions (w x h x d)	433 x 83 x 215 mm (17.1 x 3.3 x 8.5 in.)		
Weight	6.8 kg (15 lbs.)		

* Smaller and larger dimensions possible, depending on material

• Technical specifications are subject to change without notice

** For 3 Sigma with 1 second averaging

*** GaugePro 22 can be configured for two ranges by moving the transducers between two positions

The GaugePro is a QC solution combining the UMAC CI processor with a dedicated user interface, a versatile product sample holder and transducer assembly, producing highly accurate and unbiased measurements in seconds. All pertinent dimensions are defined, based on either 4 or 8 measurements around the product circumference.