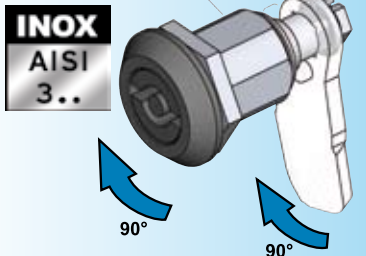


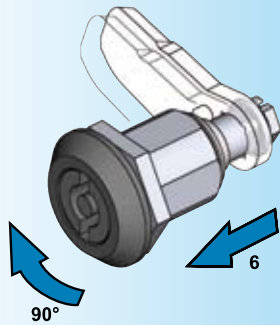
Compression latch PROGRAM 1000

Beschlagteile



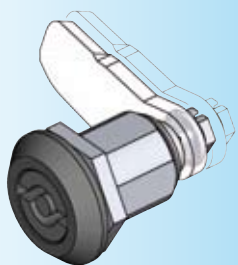
Open condition

The first 90° of rotation of the insert also turns the cam 90°.



Closed position

The second 90° of rotation of the insert draws the cam toward the door 6 mm axially.



Compressed condition

Unlock:
Reversed rotation

Further parts see page

- Cam with or without catch from 1C-120
- (not for cam with rod control)
- Accessories from 1C-320
- Escutcheon 3B-140
- Key 12B-120

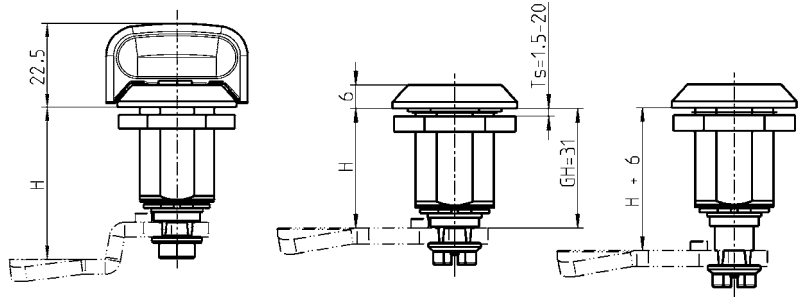


Vibration proof

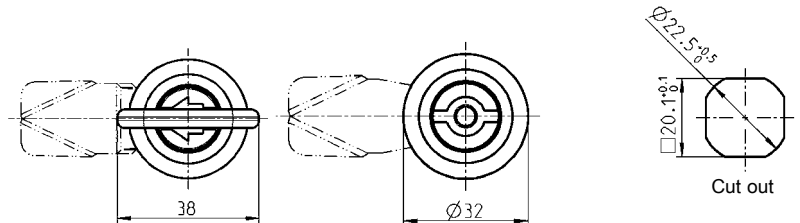
The compression latch is of a vibration-proof design. Depending on the installation location and operational conditions specific checks are necessary and/or supplementary measures of fastening required.



for stainless steel version



Housing with indicator on request



Housing and insert zinc die black p.c. or AISI 316, shaft and nut m.s. zinc plated, with spring and gasket

	Zinc die black powder coated	AISI 316
Square 6 with arrow	on request	on request
Square 7 with arrow	1000-U796	on request
Square 8 with arrow head	1000-U798	on request
Square 8 with indicator	on request	1000-U755-01
Triangular 6,5 CNOMO	on request	on request
Triangular 7	1000-U795	on request
Triangular 8	1000-U783	on request
Triangular 9	on request	on request
Triangular 10	on request	on request
Double bit 3	1000-U749	1000-U749-01
Double bit 5	1000-U748	1000-U748-01
Male hexagon 11mm with indicator	on request	on request
Hexagon female 8mm	1000-U807	on request
Hexagon female 8mm with pin	1000-U805	on request
Hexagon female 10mm	1000-U809	on request
Square female 6mm	on request	on request
Square female 7	on request	on request
Square female 8	1000-U811	on request
Daimler Benz	on request	on request
Slot 1,2 x 3	on request	on request
Slot 2 x 4	1000-U777	1000-U777-01
Slot 2 x 4 coinproof	on request	on request
Crown type	on request	on request
Railway	1000-U831	1000-U831-01
Tube with indicator	on request	on request
Wing knob	1000-U882	on request