



### BICYCLE-STAND 453

Steel + Stainless steel | 860 mm

#### Specifications

U-rack made from perpendicular steel profiles (rectangular profile 50 x 20 mm mitre-cut). Other profile dimensions, heights and widths are available upon request at a surcharge. An assembly model is available.



### BICYCLE-STAND 453 LED

Steel + Stainless steel | 860 mm

#### Specifications

Bike rail made from right-angled steel profiles with LED strip on the underside of the cross tube (50 x 20 mm rectangular profile, mitre-cut). Operated with 24 V low voltage, 1 m connector cable with plug socket at the base of the rail. Protection type IP 67. Other profile dimensions, heights and widths are available upon request at a surcharge. An assembly model is available.

#### Technical information

LED strip (approx. 24.5 x 770 mm) on the underside of the cross tube

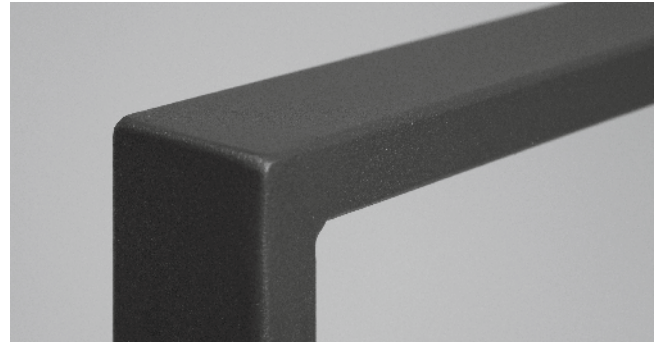
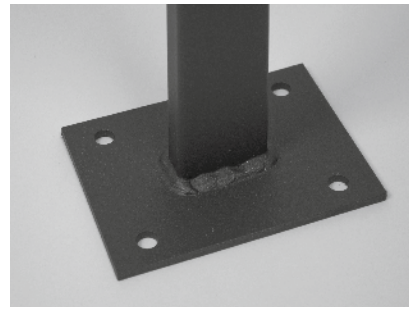
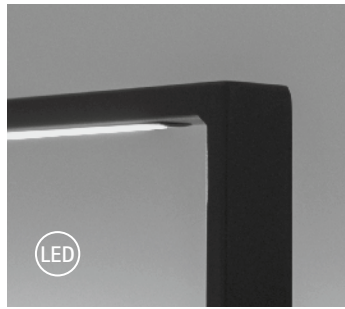
Power supply:	24 Volt DC
Power input:	ca. 6,7 W
Luminous flux:	approx. 560 lm
Reflected beam angle:	120°
Light colour:	4000 K
Light output:	CRI > 80
Protection type IP 67:	IP 67
Connector cable:	approx. 1 m with plug, IP 67

The connection, incl. all technical components, is arranged by the customer, and is not part of the delivery.

**The LED unit is available as a spare part and be replaced in case of damage.**



2018



► Usable side by side as a handrail or railing (see p. 125)

**Mounting**

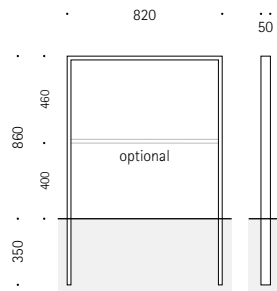
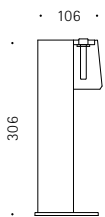
Concrete embedment  
 Option: removable with ground shells  
 Alternative: version with two flanges to enable screwing

**The 453 LED bike rails are removable to enable defective LEDs or cables to be replaced if damaged.**

**Finish**

- Stainless steel 1.4301 pickled and smoothed, grain 240  
 Optional: electropolished/high-gloss (no surcharge)
- Steel ST37, galvanised with powder coating in standard RAL colours or DB 703
- Other colours available on request at a surcharge
- Optionally with knee rail

**Ground shell\***  
(Cross-section)



Ground shells (pair), 400 mm*	<b>458.002</b>
Cover plates for ground shells	<b>458.003</b>
Assembly model	<b>458.004</b>

	Concrete embedding/Removable*	With flanges to enable screwing
<b>453</b> Steel ST37, galvanised	<b>453.001</b>	<b>453.240</b>
<b>453</b> Steel ST37, powder-coated	<b>453.011</b>	<b>453.040</b>
<b>453</b> Stainless steel 1.4301	<b>453.002</b>	<b>453.140</b>

	Concrete embedding/Removable*	With flanges to enable screwing
<b>453 LED</b> Steel ST37, galvanised	<b>453.101</b>	<b>453.540</b>
<b>453 LED</b> Steel ST37, powder-coated	<b>453.111</b>	<b>453.340</b>
<b>453 LED</b> Stainless steel 1.4301	<b>453.102</b>	<b>453.440</b>

\*For the removable version, two ground shells are needed.

