

# Fact Sheet

# BIZERBA

## iL Economy 4000F/MP

*Although of low design, the load receptors of the iL Economy models are suitable for harsh industrial environments. Their flexibility makes them universally usable - outstanding weighing results are guaranteed.*



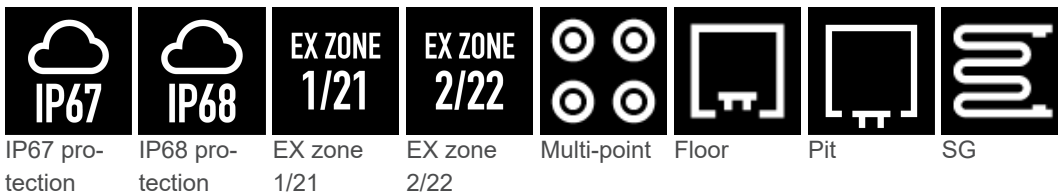
**More information**  
High performance  
with a wide range of  
solutions and options.

Specifications	Facts	Details
<b>Weighing ranges</b>	1,500-3,000 kg	Interval: 500-1,000 g
<b>Strain gauge load cell made of stainless steel</b>	Strain gauge shear beam	Stainless steel load cell
	Nominal load max. 1,100 kg	Load capacity: 4,000 kg Design load 1: 4,000 kg Design load 2: 2,800 kg Design load 3: 2,000 kg Wheel load: 600 kg Axle load: 1,200 kg
<b>Dimensions of load platter</b>	1,000x1000 mm	
	1,250x1,000 mm	
	1,500x1,250 mm	
	1,500x1,500 mm	
<b>Materials</b>	All stainless steel	
	Painted steel	
<b>Overall height</b>	78 mm	Level adjustment by means of foot screws, approx. +5 mm
<b>Mounting method</b>	Free-standing	Without ramp including 2 fixing plates With 1 ramp including 3 fixing plates With 2 ramps including 4 fixing plates Pit frame (optional)
	Built-in	
<b>IP rating</b>	IP67	Load cells
<b>Explosion-proof version</b>	Zone 1/21	Load cells in Ex ib version for Ex zone 1/21
	Zone 2/22	Additional plate for Ex zone 2/22 No explosion-proof version for painted load platters
<b>Ambient temperature</b>	-10 °C to +40 °C	Operation
	-50 °C to +85 °C	Storage
<b>Net weight of device</b>	Load receptor:	Weight load receptor / weight ramp
	1,000x1,000 mm	84 kg / 34 kg
	1,250x1,000 mm	100 kg / 34 kg
	1,500x1,250 mm	146 kg / 42 kg
	1,500x1,500 mm	172 kg / 50 kg

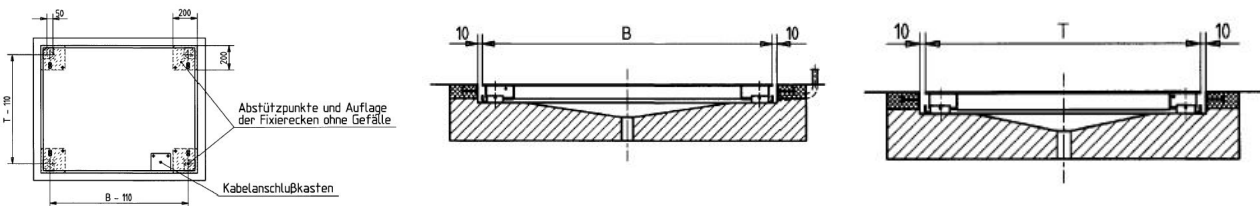
Options	Facts	Details
<b>Cable junction box</b>	IP67 protection	Compound filled
<b>Drive-on ramps</b>	Length 650 mm or extra long with 1,000 mm Width 1,000 mm – Painted plane – Painted checkered plate – Stainless steel plane – Stainless steel checkered plate Width 1,250 mm – Painted plane – Painted checkered plate – Stainless steel plane – Stainless steel checkered plate	Painted not for explosion-proof version Painted not for explosion-proof version  Painted not for explosion-proof version Painted not for explosion-proof version
<b>Pit frame</b>	Stainless steel or painted Welded version	Dimension 1,000x1,000 mm Dimension 1,250x1,000 mm Dimension 1,500x1,250 mm Dimension 1,500x1,500 mm
<b>Pit support plates</b>	Version, stainless steel	Required if pit/pit frame available

## Info graphics

### Symbols



### Dimensional drawings



### See also

[Tabelle\\_iL\\_Economy\\_4000FMP.pdf](#) [▶ 3]

Weighing range	Scale interval	Dimensions	Load cell	max. preload	Version		
					All stainless steel	Painted	EX
1,500 kg	500 g	1,000 x 1,000 mm	Strain gauge	2,000 kg	X	X	X
3,000 kg	1,000 g	1,250 x 1,000 mm		1,000 kg	X	X	X
1,500/3,000 kg Dual range	500/1,000 g	1,500 x 1,250 mm		1,000 kg	X	X	X

---

**Bizerba SE & Co. KG**

Wilhelm-Kraut-Straße 65  
72336 Balingen

T +49 7433 12-0  
fax: +49 7433 12-2696  
marketing@bizerba.com

**[www.bizerba.com](http://www.bizerba.com)**