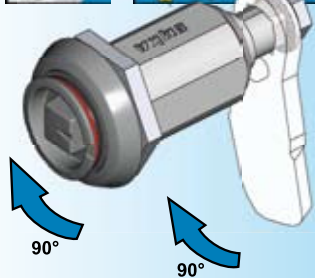


#### Vibration proof

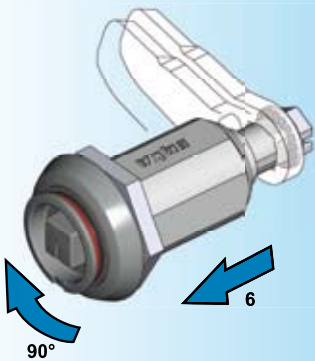
The compression latch is vibration-proof as such. Depending on the installation location and the operating conditions specific checks are required and/or fastening measures necessary.

When the compression latch is used in combination with the dust cap (page 1C-330), another security aspect is added:

Additionally to the red ring being visible, the dust cap can not be locked.



**Open condition**  
By turning the insert by 90° the cam is turned.



**Closed position**  
The second 90° of rotation of the insert draws the cam toward the door 6 mm axially.



#### Compressed condition

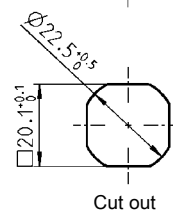
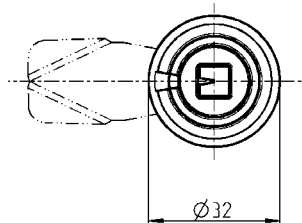
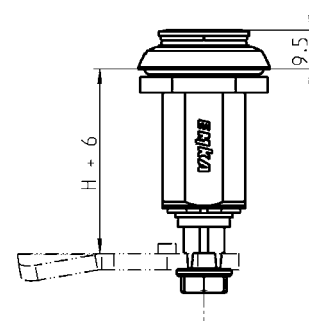
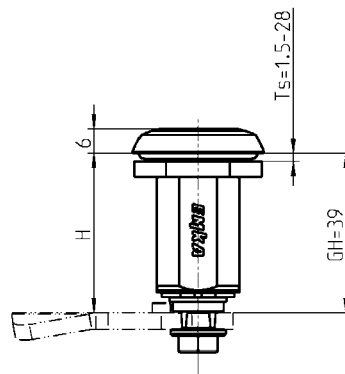
**Unlock:**  
Reversed rotation

#### Further parts see page

- Cam with or without catch from 1C-120
- (not for cam with rod control)
- Accessories from 1C-320
- Escutcheon 3B-140
- Key 12B-120

Compressed condition

Open condition



Housing and insert zinc die black powder coated, signal ring red, nut and screw m.s. zinc plated, with spring and seal

Square 8	1000-U846
National railway	1000-U848