

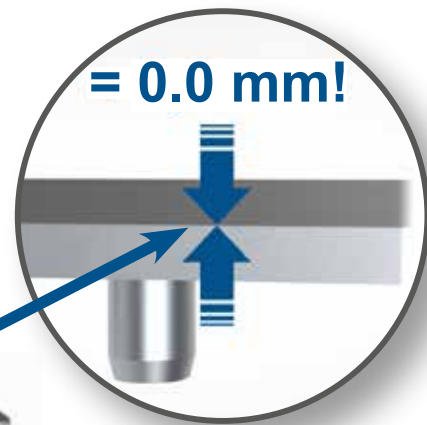


## **HONSEL RIVET NUT “headless”**

### **FLUSH MOUNT BLIND RIVET NUT**

- ✓ Protusion 0mm
- ✓ Flush mount in smooth bores

# HONSEL RIVET NUT „headless“



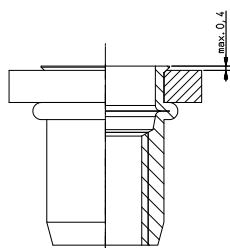
Flush mounted blind rivet nut,  
Protusion 0mm.

The **HONSEL RIVET NUT** “headless” can be used in existing and new applications. The blind rivet nut can be flush mounted in smooth bores without countersinking. The omission of the “countersink” process of the hole realizes enormous potential for savings. Due to the **0 mm protrusion**, components can be mounted without interfering edges or slide over one another without obstruction.

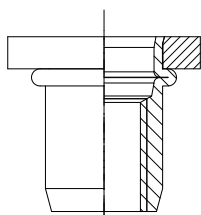
Existing HONSEL standard setting tools can continue to be used. The use of manual hand-held setting tools, pneumatic/hydraulic setting tools and battery-powered setting tools is possible using an adapted mouthpiece.

## Advantages:

- ✓ Flush mount in smooth bores
- ✓ No countersink required
- ✓ Protrusion 0 mm
- ✓ No interfering edges
- ✓ High-quality corrosion protection (zinc-nickel) with 720 h salt spray test resistance



Standard countersunk blind rivet nut in a smooth bore; Protrusion approx. 0.4mm.



**HONSEL RIVET NUT** “headless” in a smooth bore; protrusion 0 mm.



Name	Dimension	Material	Clamping range	Length	Setting force	Tightening torque	Axial test force	Article no.
SM 6-55-R	M6	Steel	2.5 - 5.5 mm	18 mm	max. 10,000 N	min. 10 Nm	min. 15,000 N	20801060550
SM 8-55-R	M8	Steel	2.5 - 5.5 mm	19 mm	max. 15,000 N	min. 24 Nm	min. 23,500 N	20801080550
SM 10-55-R	M10	Steel	2.5 - 5.5 mm	22 mm	max. 25,000 N	min. 48 Nm	min. 37,000 N	20801100550



Trade and industry: **HONSEL** Distribution GmbH & Co. KG | Friedrich-Wöhler-Str. 44 | D-24536 Neumünster | Telefon: +49-(0)4321-96 71 71  
 Automotive: **HONSEL** Umformtechnik GmbH | Wernher-von-Braun Str. 2 | D-58730 Fröndenberg/Ruhr | Telefon: +49-(0)2373-7550  
 E-Mail: [info@honsel.de](mailto:info@honsel.de)