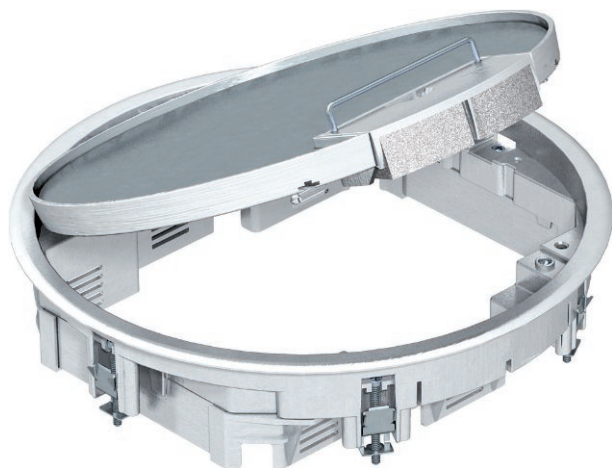


# Technical data sheet

## GESRA7/10 service outlet with handle clamp

Art.-Nr. 7405544



Service outlet with handle clamp for up to 10 individual Modul 45 devices in 2 UT3 and one UT4 universal support, use in duct systems and system floors.

Cord outlet made from polyamide RAL 9011.

10 mm floor covering recess in hinged cover can be reduced to 5 mm using enclosed pressboard filler.



**AIG** Die-cast aluminium

Additional product text, instruction | Up to 7 installation devices with 50 mm central plate can be inserted.

### Master data

Item no.	7405544
Type	GESRA7 10U
Description 1	Service outlet
Description 2	for universal mounting
Dimension	294x294x71
Material	Die-cast aluminium
Material symbol	AIG
Smallest sales unit	1,00 Piece
Weight	206,50 kg/100 pc.

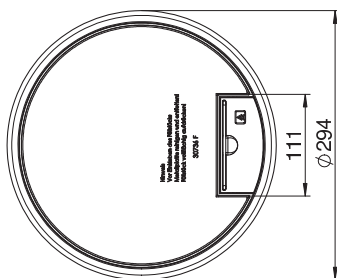
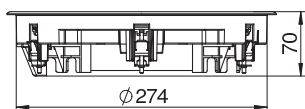
# Technical data sheet

## GESRA7/10 service outlet with handle clamp

Art.-Nr. 7405544



### Technical data



External diameter	294,00 mm
Installation diameter	275,00
Number of installable devices	10,00
Number of mounting boxes	3,00
Floor covering thickness	10,00 mm
Floor covering protection frame	<input checked="" type="checkbox"/>
Floor care	Dry
Version for	Round
Seal installation option	<input type="checkbox"/>
Installation depth	78,00 mm
Floor height	78 mm
Device support to accept mounting boxes	<input checked="" type="checkbox"/>
Suitable for wet care	<input type="checkbox"/>
Suitable for screed-covered underfloor ducts	<input checked="" type="checkbox"/>
Suitable for raised floor installation	<input checked="" type="checkbox"/>
Suitable for cavity floor installation	<input checked="" type="checkbox"/>
Suitable for underfloor ducts	<input checked="" type="checkbox"/>
With floor covering recess	<input checked="" type="checkbox"/>
Nominal size for device installation units	R7
Suitable for underfloor box	350
Opening mechanism	Handle
Frame version	Carpet protection frame
Schwerlastausführung	<input type="checkbox"/>
Typ des Einbausystems	UT3 / UT4
Approvals	VDE