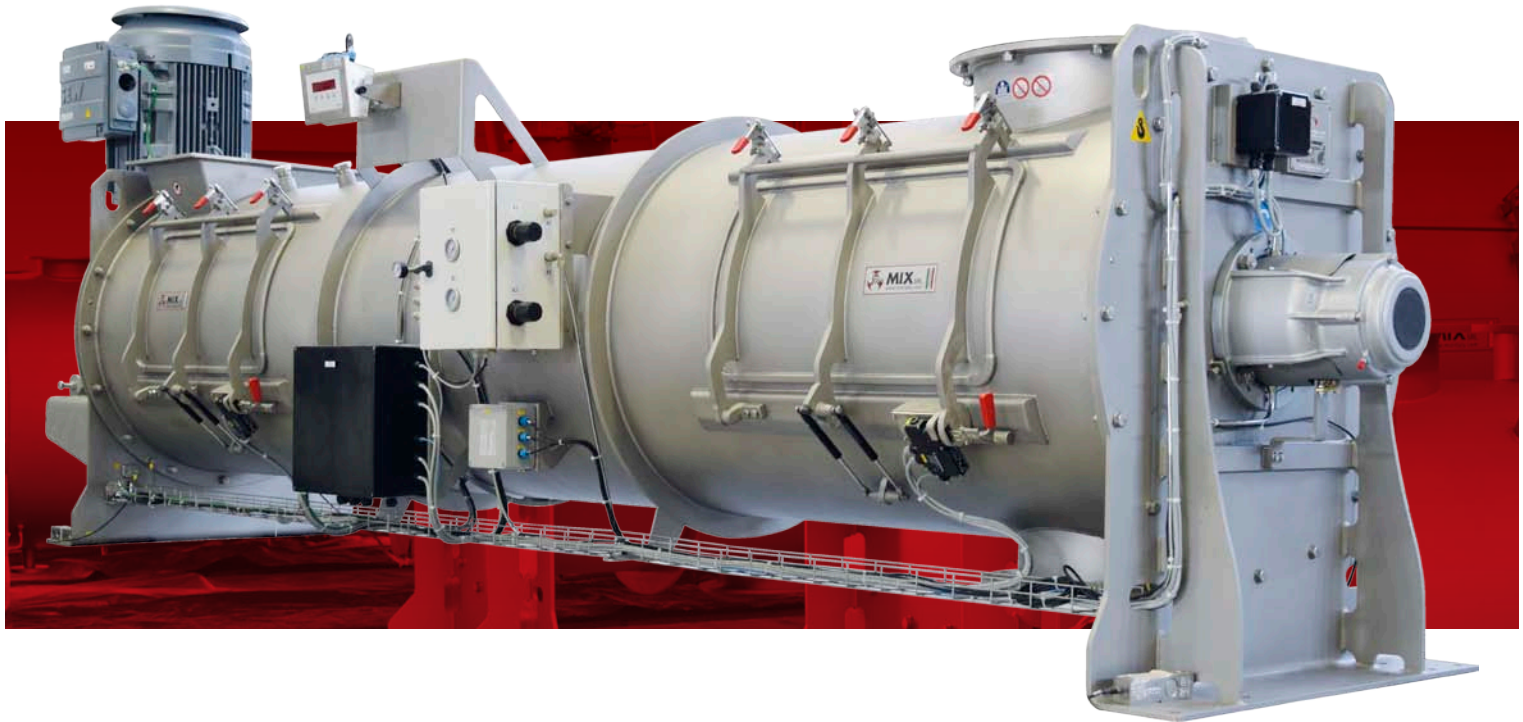




CONTINUOS A-MXAH3000



Products	Biopolyester, Biopolimer, additives and polyethylene
Process	Process temperature between 15°C and 50°C
Batch size (net volume)	1.600 liters
Mixing chamber type	Cylindrical
Parts in contact with the product	AISI 304 Final roughness 0,2 - 0,25 µm
Mixing tools	Ploughshares
Discharge door type	Discharge door with round profile, recreating the roundness of the mixing chamber
ATEX Certification	⚡ II 1/3 D c b T100°C / T135°C
Year of production	2019
Country of installation	Italy