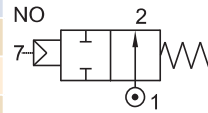


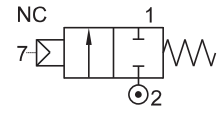
2/2 AIR OPERATED, ISOLATED PISTON, NORMALLY CLOSED/ OPEN VALVE

TYPE	PRESSURE

TYPE	PRESSURE
23202	0 - 20 bar



TYPE	PRESSURE
23102	0 - 20 bar



FEATURES

- Bubble tight shut off
- Mounts in any position
- Vibration resistance up to 9g
- Suitable for high speed cycling
- Speed up to 600 cycles/ min
- Life >10 million cycles



WETTED PARTS

Code	※	B18	
Body	Powder Coated Aluminium Cast/ CF8M	CF8M Aluminium	
Internals	Aluminium, Brass and SS 316	Brass SS 316	
Spring	SS 302		
Fasteners	SS 304		
Seat, Seals	NBR, Viton		

※ Do not specify code if opted for. Refer Page # 22 for Value of ※

AMBIENT AND FLUID TEMPERATURE

-30 °C to 75 °C

MEDIA

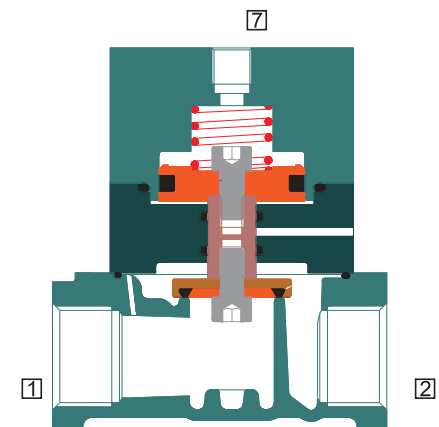
Air, Inert Gases, Water, Vacuum, Free Flowing Liquid, Oil, Diesel, Kerosene, LPG, Furnace Oil

APPLICATION

Ideally suited for ON/ OFF control of fuel gas

PORT CONNECTION

	INLET	OUTLET	PILOT INLET
NC	2	1	7
NO	1	2	7



SPARES

(Refer page 25 for ordering code)

SPARE KIT	CODE
Seal Kit : Oring Set	98
Repair Kit : Oring Set, Fastener, Springs	99

Contact Rotex for

- Any other ambient, fluid temperature, media and application

2/2 AIR OPERATED, ISOLATED PISTON, NORMALLY CLOSED/ OPEN VALVE

SPECIFICATION

PORT CONNECTION			PRE-SURE bar		ORIFICE (mm)	FLOW FACTOR kv (LPM OF WATER @ 1 bar ΔP)	VALVE TYPE	PILOT PRESSURE	BODY MATERIAL AND INTERNALS			SEALS					MANUAL OVERRIDE		SOLENOID ENCLOSURE		SUFFIX		POWER VA		CONSTRUCTION REFERENCE NUMBER				
SIZE	BSP(F)	NPT(F)	MINIMUM	MAXIMUM					ALUMINIUM	BRASS	CF8M/ Aluminium	NBR	Viton	EPDM	HYTREL	PTFE	NIL	STAYPUT CUM MOMENTARY	MOMENTARY	FLYING LEAD	PLUG IN, IP67	SQ. PLUG IN, IP67	TERMINAL BOX IP67	Ex d IIC, T4 OR T6, IP67		LARGE ENCLOSURE	SOLENOID SIZE	OXYGEN	AMONIA
2/2 NORMALLY CLOSED																													
1/2"	4G	4R	0	20	12	60	23102	2-20	✳	B18	✳	S2																	85
3/4"	6G	6R	0	20	20	110	23102	2-20	✳	B18	✳	S2																	86
1"	8G	8R	0	20	25	185	23102V01	2-20	✳	B18	✳	S2																	87
1 1/4"	10G	10R	0	20	40	400	23102V01	2-20	✳		✳	S2																	88
1 1/2"	12G	12R	0	20	40	440	23102V01	2-20	✳		✳	S2																	88
2"	16G	16R	0	20	50	650	23102V01	2-20	✳		✳	S2																	90
2/2 NORMALLY OPEN																													
1/2"	4G	4R	0	20	12	60	23202	2-20	✳	B18	✳	S2																	85
3/4"	6G	6R	0	20	20	110	23202	2-20	✳	B18	✳	S2																	86
1"	8G	8R	0	20	25	185	23202V01	2-20	✳	B18	✳	S2																	87
1 1/4"	10G	10R	0	20	40	400	23202V01	2-20	✳		✳	S2																	88
1 1/2"	12G	12R	0	20	40	440	23202V01	2-20	✳		✳	S2																	88
2"	16G	16R	0	20	50	650	23202V01	2-20	✳		✳	S2																	90

6

✳ = Do not specify when opted for. Refer Page # 22 for Value of ✳
 ✓ = Options available

* Valve type printed in red colour is external pilot air/ air operated valve

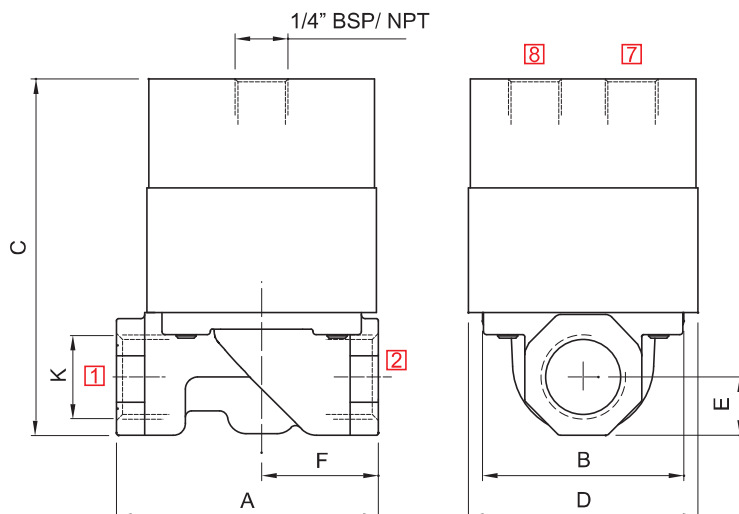
ORDERING CODE AND EXAMPLE VALVE

VALVE TYPE - SUFFIX - ORIFICE - PORT CONNECTION - BODY AND INTERNALS - SEAL - MEDIA

e.g. 23102-12-4R-B18-S2

DIMENSIONS

All Dimensions are in mm



NW	K (PORT SIZE)	A	B	C	D	E	F	CONST. REF.
12	1/2"	65	50	99	57	15	29	85
20	3/4"	84	64	110	63	17	42	86
25	1"	110	95	135	82	22	52	87
40	1 1/4"	135	94	181	100	30	66	88
40	1 1/2"	135	94	181	100	30	66	88
50	2"	165	140	210	150	38	76	90