

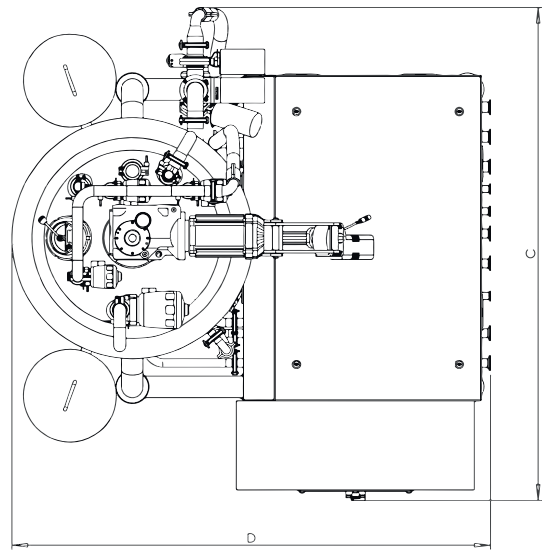
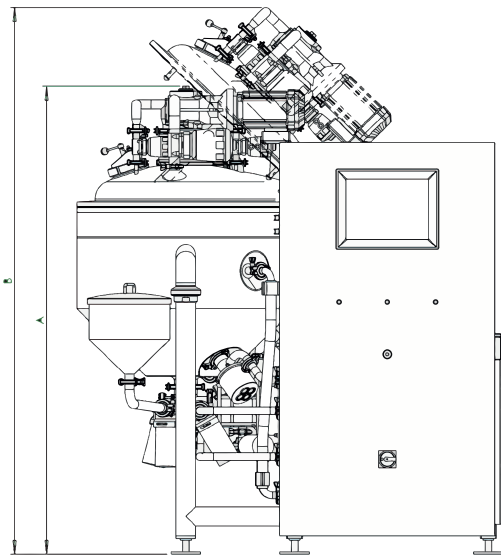
I Application

VACUUM REACTOR WITH HOMOGENIZATION, HEATING AND COOLING :

- (Introduction of raw materials (liquids and solids.
- Vacuum/Pressure system.
- Agitator type anchor.
- Homogenizer with pump function included.
- Heating/Cooling jacket.
- Temperature control.
- Product recirculation.
- Built-in CIP.

I Additional options :

- Lobe pump
- Oil & water phase tanks
- The possibility of emptying the container for unloading
- Additional documentation is available upon request: IQ, PQ, DQ, OQ, FAT, SAT



WHITESTEEL GmbH
We Create Solutions

| SPECIFICATIONS

Quantity (unit)- 1

Capacity (L) – 300

Material quality:

o In contact with product – AISI316L

o Remaining – AISI304L

Design data:

DESCRIPTION VESSEL TUBES CHAMBER

MIN / MAX PRESSURE (bar) -1 / +0.5 - 4

PROJECT PRESSURE (bar) ATM - 6

MIN / MAX TEMPERATURE (°C) AMB/95 - -

PROJECT TEMPERATURE (°C) AMB/100 - 145

FLUID CONTENTS: Cream Cheese - Processed cheese - analogue cheese - block cheese - milk cream - mayonnaise - Ketchup - Mastards Sauce - Soup - Sauces - Chocolate - Ice cream - cosmetics creams and ointments...

DENSITY (kg/m³) up to your request.

VISCOSITY (cP) up to your request.

| MORE INFORMATION

Vessel with scraper agitator

Powerful vacuum system

Homogenizer with built-in pump function

Double and insulating jacket

Temperature control

Heating/Cooling system

Easily understood and controlled by the operator

Long loop

Exterior CIP compatible

Built-in CIP

Lifting system for opening the vessel

Shaft sealing ring

Finishing:

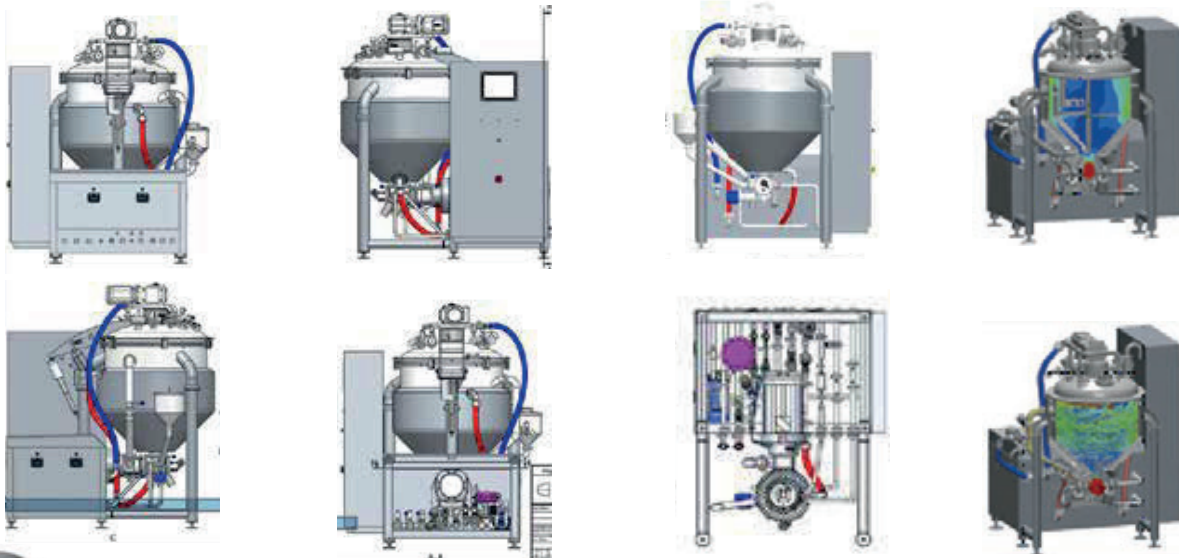
Inside: polished to brilliant RA <08

Outside: satin

Options:

Direct steam injection for fast heating - Receipts - Records - Dosing system - Weigh-

ing cells - Short loop



WhiteSteel
GmbH
We Create Solutions

Homogenizer

installed on the bottom of the preparation vessel to homogenize and smoothen the product

CIP System

Open and close CIP Ball

Valves System

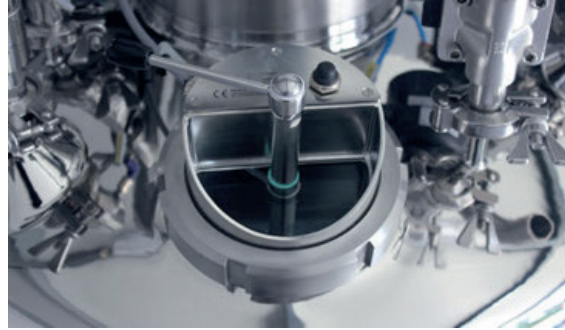
Diaphragm Valves

Temperature sensor

Infrared temperature sensor used To measure the temperatures that shown on the control screen

Blender system

The blending system is equipped with 6 Knives
The knives move at various speeds and are intended for materials with diverse viscosities.



■ **Compact Design**

All necessary equipments are equipped on the lid for efficient operation
2 Steam Valve To Inject steam during preparation

■ **Sight side glass to observe the process**

■ **Homogenisation system with cooling**



WHITESTEEL GmbH
We Create Solutions

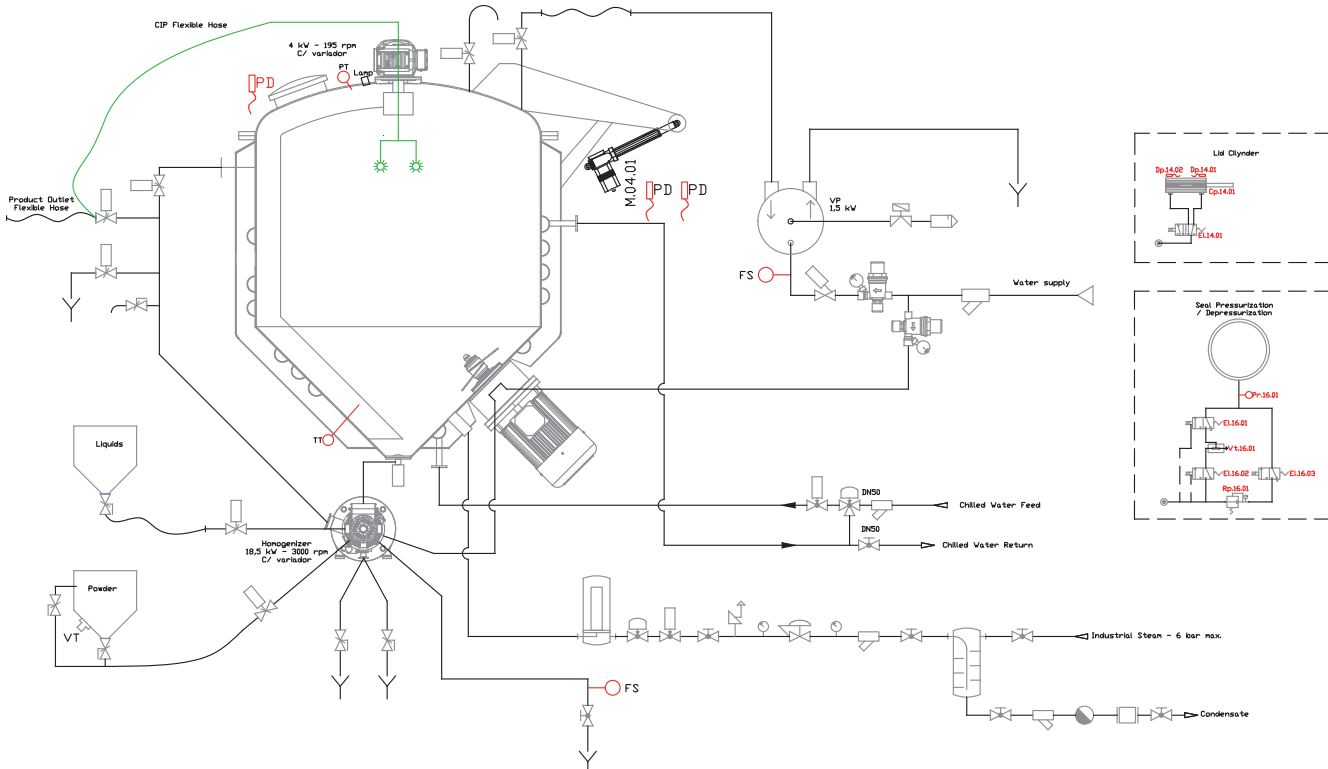
The information is for guidance only. We reserve the right to modify any material or feature without notice in advance.
Photos are not binding. For further information, please, consult our web site

www.whitesteel.de



Less Is More

VACUUM REACTOR



Machine Workflow

Available sizes

	A	B	C	D	Minimum useful vol. (L)	Maximum useful vol. (L)	Agitator	Homogenizer	Total (all equipment)	Total weight
VRWS10	1800 mm	2050 mm	1650 mm	1650 mm	40L	100L	0,75 Kw	7,5 Kw	12 Kw	700Kg
VRWS50	2480 mm	2950 mm	1800 mm	3000 mm	150L	500L	2,2 Kw	18,5 Kw	24 Kw	1300Kg
VRWS100	3000 mm	3500 mm	2000 mm	3250 mm	300L	1000L	4 Kw	22 Kw	30 Kw	2000Kg



The information is for guidance only. We reserve the right to modify any material or feature without notice in advance. Photos are not binding. For further information, please, consult our web site www.whitesteel.de



Vacuum Reactor