



# UFANET GROUP EQUIPMENT



**All products are tested  
on our own experience!**



**Solutions for all types  
of communication  
line installation**



**Best value  
for money**



**Continuous improvements  
based on exploitation  
by real consumers**



**We constantly improve our  
products based on the  
customer`s experience  
in using them**



# CABINETS

Ufanet group sells cabinets and containers of its own design for easy and fast installation communication lines and their protection both in urban settings and in the private sector.



## Optical distribution cabinet PON Camel-3

It is applied in private houses during installation of PON networks.

**Installation:** mounting the Cabinet to the support is carried out with a mounting tape. (2 PCs.)

**Overall dimensions:** 390\*450\*170

The housing is made of galvanized sheet steel.

The Cabinet has 4 slots for placement – - removable panel for optical crosses or - optical divider cassette type (130x100x25 mm) In addition, the Cabinet can accommodate up to 3 ku-1 Cassettes for optical fiber welded joints.

**Specification:** - the number of input trunk VOCs d 10 mm-up to 4 PCs the number of input subscriber VOCs d 6 mm-up to 16 PCs.



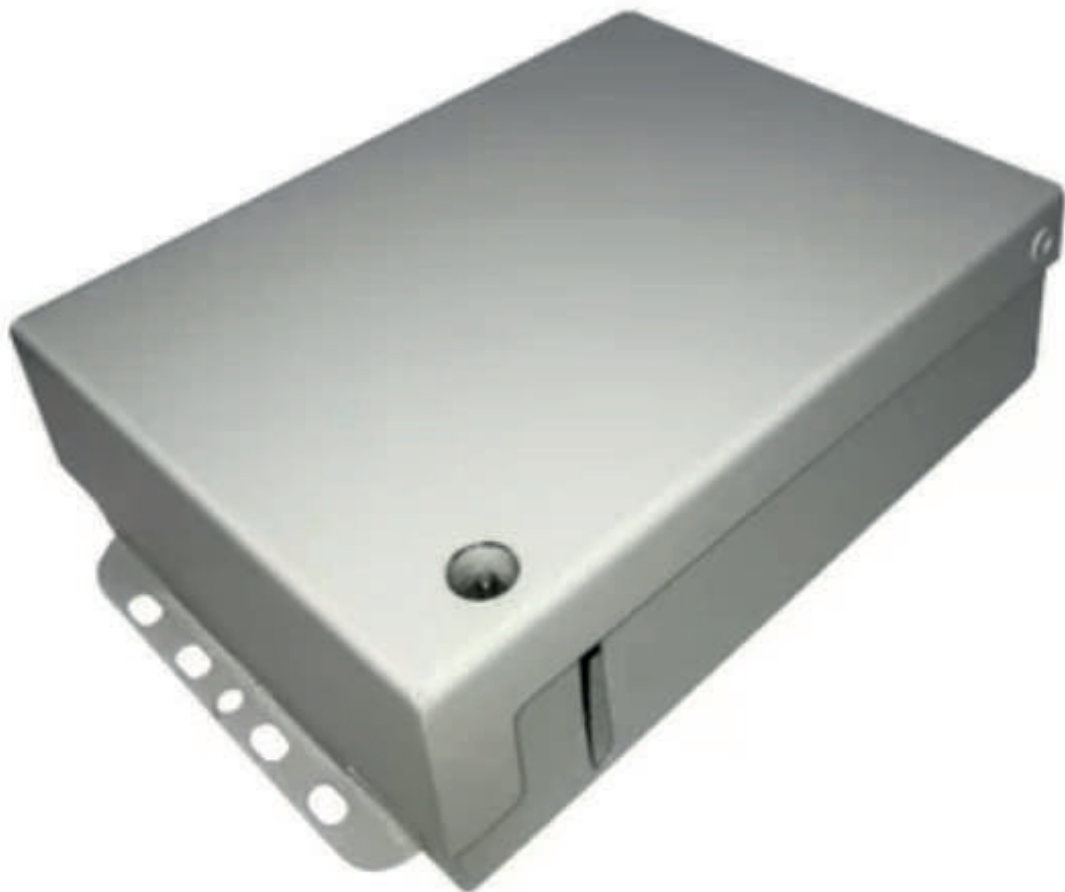
## Optical subscribers' cabinet Sharpey-TO

Designed for installation in communal stairwells, at staircases. It is applied during installation of PON networks in low-rise residential buildings (2—4 floors).

**Mounting:** Sharpey is fastened with dowels and screws directly to the wall in the communal stairwell. According to Ufanet standard, no more than 10 SM-1 cables are installed inside the cabinet.

**Overall dimensions:** 210\*70\*250

The Cabinet can be equipped with: - optical cassette divider (130\*100\*25) - 1 PC. - removable panel for optical crosses-optical case coupler (90\*20\*10) -1 PC. Fiber optic welding is not provided.



## Gnom-2 Subscriber Optical Cabinet

Designed for installation in hallways and staircases. Is used for PON networks in apartment buildings.

**Dimensions:** 195\*145\*50

**The cabinet can accommodate:**

- a removable panel for optical terminal boxes or an optical cassette type PLC splitter (130x100x25 mm)
- box-type optical coupler (90\*20\*10) – 2 pcs.
- 4 optical adapters SC type

No FOCL welding is required.  
Up to 8 pcs. of cable slack max 30 cm.

**Installation:** Mount the cabinet to the wall using 4 dowel screws



## Camcorder box with bracket

Designed for mounting video cameras on supports.

**Dimensions:** 120\*200\*60

**Box dimensions:** 120\*120\*60

The design includes a box for connecting FTP and standard camera wires as well as a bracket for attaching input cable. The camcorder is attached directly to the box with self-tapping screws.

**Installation:** Use a mounting tape (2 pcs) to attach the device to the support.



## Node cabinet 9U Spinner Ufanet

Used for PON station equipment with capacity up to 32 ports, its power supply equipment and backup equipment united in one node.

It is possible to install up to 9U active and passive equipment in the top part of the cabinet.

### **Installation:**

The cabinet is fastened with 4- 8 anchor bolts 12x100 (brick house), 12x75 (panel house).

Power supply equipment is located in the lower part of the Cabinet, including batteries.

**Overall dimensions:** 700\*840\*450

The Cabinet can be placed: Both indoors and outside of buildings as a thermal Cabinet when warming it with foil and installing a heater.





## Container USmini

Designed for installation in settlements and for providing the communication node.

### **Overall dimensions:**

1200\*1740\*2560 (with air conditioning 3160)

The container has 42U telecommunications rack, 19 inches, 800 mm deep — 1 pc.

### **Installation:**

The container is installed and mounted on the prepared foundation blocks FBS 12-3-6 (2 pcs). Cable lines are inserted through the floor holes. Climate control equipment: Air conditioning — cooling capacity 2638 kW; Heater — power 500 W.

### **Note:**

Pictures may vary depending on the modification of the container



**All products are tested  
on our own experience!**



**Solutions for all types  
of communication  
line installation**



**We developed  
the mounts and fastenings  
and brackets**



**Best value  
for money**



**Continuous improvements  
based on exploitation  
by real consumers**

# FASTENINGS AND BRACKETS

Ufanet group sells cabinets and containers of its own design for easy and fast installation communication lines and their protection both in urban settings and in the private sector.





## Fastening unit UK-N light

It is applied as anchor fastening for trunk and subscriber optical fibre transmission lines.

**Specification:**

Width – 70 mm

Height – 50 mm

**Installation:** The part is fastened to the support with the mounting band (1 pc.)

**Composition:**

steel angle 40\*40\*2

steel wire d. 6 mm

Workload — 2kN



## Fastening unit UK-N/P

It is applied as an anchoring and supporting fastener in private houses during installation of the trunk and subscriber optical fibre transmission lines.

### **Specification:**

Width – 70 mm

Height – 185 mm

### **Installation:**

The part is fastened to the support with the mounting band (2 pcs.)

### **Composition:**

steel angle 40\*40\*2

steel wire d. 6 mm

Workload in tension mode — 3 kN

Workload in support mode — 0.7 kN

# Universal fastening unit UK-N/U

It is applied as an anchor fastening for trunk and subscriber lines, providing offset up to 150 mm between the fixing point of the optical fibre transmission line and the support body.

This fastening unit can be fitted with the «installation bracket for the optical distribution cabinet with 150 mm offset (on SV support)» for further placement of the distribution optical cabinet.

## **Specification:**

Width – 150 mm

Height – 40 mm

**Installation:** The part is fastened to the support with the mounting band (1 pc.)

## **Composition:**

steel angle 40\*40\*4

steel wire d. 6 mm

Workload in tension mode — 2kN

Workload in support mode — limited by the strength of the mounting band (0.5 kN, band 0.7\*19 AISI 201)





## Bracket for FOC mounting

Is used for backbone and subscriber FOCLs as an addition to UK-N/U Multi Mounting Unit 150 mm extension (for reinforced-concrete supports) when a FOC needs to be mounted on a support. Provides 150 mm FOC projection from the support.

### **Parameters:**

Height 565 mm

Material: steel strip 25\*4

### **Installation:**

Use a mounting tape (1 pc.) to attach the unit to the support



## KUB-1 Support Mount

Is used for backbone and subscriber FOCL supports as a loop fastening for vertical and horizontal cable installation along the support.

Replacement of UK-P-(Sh)

### **Installation:**

Use a mounting tape (1 pc) to attach the unit to the support. Use a banding tape or nylon clamps (ties) to fasten the loops to the unit.

### **Parameters:**

Height 40 mm

Width 40 mm

**Material:** Manufactured from 40\*20 shaped tubes





## Lite-1 Bracket for Fastening Flat Couplings to Supports

Is used for backbone and subscriber FOCL supports as a bracket for an optical distribution box type SNR-FTTH-FDB-24A.

This bracket allows storing a cable slack in a coil  $\text{Ø}350$  mm in the space between the bracket and the support body.

### **Cable slack:**

Cable  $\text{Ø}10$  mm – 2 pcs, 5 m each  
Cable  $\text{Ø}6$  mm – 8 pcs, 1.5 m each

### **Parameters:**

Height 350 mm Width 300 mm Depth 80 mm

### **Installation:**

Use a mounting tape (2 pcs.) to attach the unit to the support. Use 3 M5 screws and M5 nuts (3 pcs) to mount the optical distribution box.

**Material:** Painted galvanized steel sheet



## Loop Support. Sling

Is used for backbone FOCL supports a supplemental fastening. This mount is sliding, which can significantly accelerate the installation of a cable line. This mount is multi-purpose and does not depend on cable diameter.

**Installation:** Installation requires a bow shackle No. 12

**Parameters:**

Sling – 25\*360

Working load – 1kN



# SUBSCRIBER TERMINALS

High-performance multifunctional subscriber terminals designed for modern telephony, IPTV, OTT, and high-speed Internet. Besides, subscriber terminals enable operators to provide users with a wide range of services and capabilities for working in a local network.



## Subscriber terminal C-DATA FD600-701GA

### Description:

Cable TV 1xRF output,  
SC/APC type PON connector,  
Broadcast storm control, ACL access control

### Specifications:

Technology: GPON

**Standard:** G.984 Class B+

Number of PON ports: 1

**PON connector:** SC/APC

**Number of Ethernet ports:** 1xGE

**Downlink speed:** 2.488Gbps

**Uplink rate:** 1.244Gbps

**Cable TV (CATV):** Yes, 1xRF output 47MHz~1000MHz

**Wi-Fi:** No

**Power:** 12V DC

**Maximum current:** 0.5 A

**Power consumption:** less than 5W



## Subscriber terminal C-Data FD600-511G- HZ660.2A

**Description:**

SC/APC type PON connector

Specifications:

**Technology:** GPON

**Standard:** G.984 Class B+

**Number of PON ports:** 1

**PON connector:** SC/APC

**Number of Ethernet ports:** 1xGE

**Downlink speed:** 2.488Gbps

**Uplink rate:** 1.244Gbps

**Wi-Fi:** No

**Power:** 12V DC

**Maximum current:** 0.5 A

**Power consumption:** less than 5W

## **RUSSIA AND THE CIS**

☎ +7 (347) 292-77-55

✉ [export@ufanet.ru](mailto:export@ufanet.ru)

## **FOR PARTNERS FROM OTHER COUNTRIES**

☎ +421 233331073

✉ [distrib@iridaworld.com](mailto:distrib@iridaworld.com)

bld. 4/3, Prospekt Oktyabrya st.,  
Ufa, Russia, 450001