

SMA 60-BHV | SMA 60-BER

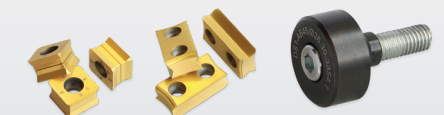
Chamfering Machine, handheld, electric

They are the most robust and powerful manual edge milling machines for heavy-duty use. Thanks to the spring-loaded flywheel technology, large chamfers can be milled even more easily, safely and economically.



SMA 60-BHV

SMA 60-BER



Further accessories can be found in our **Accessory Catalogue**.

Applications

- ▶ Chamfering of flat workpieces made of steel, stainless steel, cast iron, aluminium, brass, and plastic
- ▶ Chamfering of straight edges and contours, rounding edges
- ▶ For welding seam preparation to produce maximum welding bevels



Features

- ✔ Absolutely burr-free cutting
- ✔ Clean and consistent processing of component parts and series
- ✔ Cutter quick-change system
- ✔ Special spring technology saves the tools
- ✔ Long tool life of the cutting inserts
- ✔ Ergonomic two-hand operation

Options

- ✔ Radius cutter and radius inserts from R2 – R15 mm
- ✔ Cutter heads in various degrees
- ✔ Guide stop for straight edges
- ✔ 3D- swivel arm

Delivery contents

- ✔ Allen key 5 mm
- ✔ Torx key T 15
- ✔ Tool box
- ✔ Operating manual

Technical data

	FU 2.2	SMA 60-BHV	SMA 60-BER
Motor	-	2.9kW 1,000-8,500 rpm	2,2kW 2.200-7.800 rpm
Energy	230 V, 50/60 Hz	230 V, 300 Hz	230 V, 50/60 Hz
Maximum chamfer width	-	30 mm	30 mm
Cutter head	-	0° – 80°	0° – 80°
Guide ball bearing	-	min. Ø 26.3 mm	min. Ø 26,3 mm
Controller	-	FU 2.2	-
Weight	9.9 kg	13 kg	11 kg
Item no.	10601	71203	71478