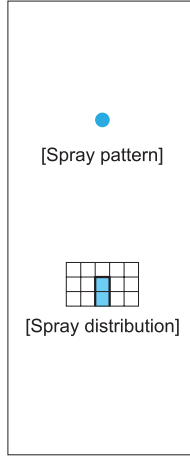


Standard Solid Stream Jet

CCP/CP

Solid Stream



[Features]

- Our highest impact solid stream. Interior design featuring minimal pressure drop generates much larger flow of solid stream jet as compared with other solid stream nozzles having the same orifice diameters.

[Standard pressure]

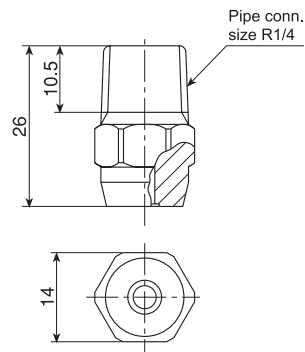
3 MPa

[Applications]

High pressure cleaning:
Wire and felt parts of paper making machines, vehicles, returnable containers, machinery, parts
Trimming: Paper making, asbestos plate

CCP series

| CCP series | |
|------------|--|
| Structure | • Made of metal, one-piece structure. |
| Material | • S303 [Note] Use CCP series nozzles below the pressure of 3.5 MPa. • Optional material: S316, B (brass) |
| Mass | • 20 g |



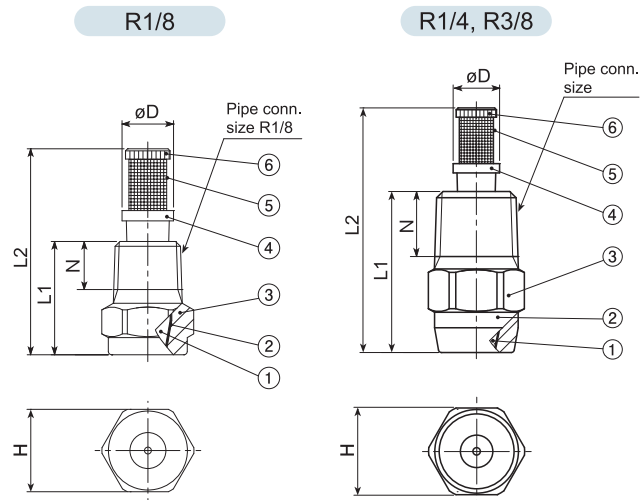
[Note] Appearance and dimensions may differ slightly depending on materials and nozzle codes.

CP series

| CP series (with ceramic orifice inserted) | |
|---|--|
| Structure | • One-piece structure with ceramic orifice inserted. |
| Material | • Nozzle orifice: ceramic • Metal parts: S303 or B (brass) • Optional material: S316 |

| Pipe conn. size | Dimensions (mm) | | | | | Mass (g)*1 | |
|-----------------|-----------------|------|----|-----|------|------------|-----|
| | L1 | L2 | H | øD | N | S303 | B |
| R1/8 | 16.5 | 30 | 12 | 7.5 | 7 | 7.1 | 7.8 |
| R1/4 | 26 | 39.5 | 14 | 7.5 | 10.5 | 19.5 | 21 |
| R3/8 | 30 | — | 19 | — | 11 | 38 | 40 |

*1) When with a strainer, add 2–5 g to the above mass.



- ①Ceramic orifice ②Adhesive: Araldite® ③Nozzle body
④Strainer holder ⑤Strainer screen ⑥Strainer cap

No strainer available for size R3/8.

[Note] Appearance and dimensions may differ slightly depending on materials and nozzle codes.

| Spray capacity code | Pipe connection size | | | | Spray capacity (ℓ/min) | | | | | | | | | | | | | Free pass. dia. (mm) | Strainer mesh size |
|---------------------|----------------------|------|------|------|------------------------|---------|---------|---------|-------|-------|-------|-------|-------|---------|-------|--------|--------|----------------------|--------------------|
| | CCP | | CP | | 0.1 MPa | 0.3 MPa | 0.5 MPa | 0.7 MPa | 1 MPa | 2 MPa | 3 MPa | 4 MPa | 5 MPa | 6.5 MPa | 8 MPa | 10 MPa | 15 MPa | | |
| | R1/4 | R1/8 | R1/4 | R3/8 | | | | | | | | | | | | | | | |
| 25 | | ● | ● | | 0.45 | 0.78 | 1.01 | 1.19 | 1.43 | 2.02 | 2.47 | 2.85 | 3.19 | 3.64 | 4.03 | 4.51 | 5.52 | 0.8 | 50 |
| 31 | | ● | ● | | 0.56 | 0.98 | 1.26 | 1.49 | 1.78 | 2.52 | 3.09 | 3.57 | 3.99 | 4.55 | 5.05 | 5.64 | 6.91 | 0.9 | 50 |
| 37 | | ○ | ○ | | 0.68 | 1.17 | 1.51 | 1.79 | 2.14 | 3.03 | 3.71 | 4.28 | 4.79 | 5.46 | 6.06 | 6.77 | 8.30 | 1.0 | — |
| 43 | | ○ | ○ | | 0.79 | 1.37 | 1.77 | 2.09 | 2.50 | 3.54 | 4.33 | 5.00 | 5.59 | 6.37 | 7.06 | 7.91 | 9.67 | 1.1 | — |
| 49 | | ○ | ○ | | 0.90 | 1.56 | 2.02 | 2.39 | 2.86 | 4.04 | 4.94 | 5.71 | 6.38 | 7.28 | 8.07 | 9.04 | 11.1 | 1.2 | — |
| 56 | | ○ | ○ | | 1.02 | 1.76 | 2.27 | 2.69 | 3.22 | 4.54 | 5.56 | 6.42 | 7.18 | 8.19 | 9.08 | 10.2 | 12.4 | 1.2 | — |
| 62 | | ○ | ○ | | 1.13 | 1.95 | 2.52 | 2.99 | 3.57 | 5.05 | 6.18 | 7.14 | 7.98 | 9.10 | 10.1 | 11.3 | 13.8 | 1.3 | — |
| 68 | | ○ | ○ | | 1.24 | 2.15 | 2.78 | 3.28 | 3.93 | 5.55 | 6.80 | 7.85 | 8.79 | 10.0 | 11.1 | 12.4 | 15.2 | 1.4 | — |
| 74 | | ○ | ○ | | 1.35 | 2.35 | 3.03 | 3.58 | 4.29 | 6.06 | 7.42 | 8.56 | 9.58 | 10.9 | 12.1 | 13.6 | 16.6 | 1.4 | — |
| 80 | | ○ | ○ | | 1.47 | 2.54 | 3.28 | 3.88 | 4.65 | 6.56 | 8.04 | 9.28 | 10.4 | 11.8 | 13.1 | 14.7 | 18.0 | 1.5 | — |
| 87 | | ○ | ○ | | 1.58 | 2.74 | 3.54 | 4.18 | 5.00 | 7.07 | 8.66 | 10.0 | 11.2 | 12.8 | 14.1 | 15.8 | 19.4 | 1.6 | — |
| 93 | | ○ | ○ | | 1.69 | 2.93 | 3.79 | 4.48 | 5.36 | 7.58 | 9.28 | 10.7 | 12.0 | 13.7 | 15.2 | 17.0 | 20.8 | 1.6 | — |
| 99 | | ○ | ○ | | 1.81 | 3.13 | 4.04 | 4.78 | 5.72 | 8.08 | 9.89 | 11.4 | 12.8 | 14.6 | 16.2 | 18.1 | 22.1 | 1.7 | — |
| 111 | | ○ | ○ | | 2.03 | 3.51 | 4.53 | 5.36 | 6.43 | 9.09 | 11.1 | 12.9 | 14.4 | 16.4 | 18.2 | 20.3 | 24.9 | 1.8 | — |
| 124 | | ○ | ○ | | 2.26 | 3.92 | 5.06 | 5.99 | 7.15 | 10.1 | 12.4 | 14.3 | 16.0 | 18.2 | 20.2 | 22.6 | 27.7 | 1.9 | — |
| 136 | ○ | ○ | ○ | | 2.48 | 4.30 | 5.55 | 6.57 | 7.85 | 11.1 | 13.6 | 15.7 | 17.6 | 20.0 | 22.2 | 24.8 | 30.4 | 2.0 | — |
| 148 | | ○ | ○ | | 2.70 | 4.68 | 6.04 | 7.15 | 8.57 | 12.1 | 14.8 | 17.1 | 19.2 | 21.8 | 24.2 | 27.1 | 33.2 | 2.0 | — |
| 161 | | ○ | ○ | | 2.94 | 5.09 | 6.57 | 7.78 | 9.28 | 13.1 | 16.1 | 18.6 | 20.8 | 23.7 | 26.2 | 29.3 | 35.9 | 2.1 | — |
| 173 | | ○ | ○ | | 3.16 | 5.47 | 7.06 | 8.36 | 9.99 | 14.1 | 17.3 | 20.0 | 22.4 | 25.5 | 28.3 | 31.6 | 38.7 | 2.2 | — |
| 186 | | ○ | ○ | | 3.40 | 5.88 | 7.59 | 8.98 | 10.7 | 15.2 | 18.6 | 21.4 | 24.0 | 27.3 | 30.3 | 33.9 | 41.5 | 2.3 | — |
| 198 | | ○ | ○ | | 3.61 | 6.26 | 8.08 | 9.56 | 11.4 | 16.2 | 19.8 | 22.8 | 25.5 | 29.1 | 32.3 | 36.1 | 44.2 | 2.4 | — |
| 210 | | ○ | ○ | | 3.83 | 6.64 | 8.57 | 10.1 | 12.1 | 17.2 | 21.0 | 24.3 | 27.1 | 30.9 | 34.3 | 38.4 | 47.0 | 2.4 | — |
| 223 | ○ | | ○ | | 4.07 | 7.05 | 9.10 | 10.8 | 12.9 | 18.2 | 22.3 | 25.7 | 28.7 | 32.8 | 36.3 | 40.6 | 49.8 | 2.5 | — |
| 247 | | | ○ | | 4.51 | 7.81 | 10.1 | 11.9 | 14.3 | 20.2 | 24.7 | 28.6 | 31.9 | 36.4 | 40.4 | 45.2 | 55.3 | 2.6 | — |
| 272 | | | ○ | | 4.97 | 8.60 | 11.1 | 13.1 | 15.7 | 22.2 | 27.2 | 31.4 | 35.1 | 40.0 | 44.4 | 49.7 | 60.8 | 2.7 | — |
| 297 | | | ○ | | 5.42 | 9.39 | 12.1 | 14.3 | 17.1 | 24.2 | 29.7 | 34.3 | 38.3 | 43.7 | 48.5 | 54.2 | 66.4 | 2.9 | — |
| 322 | ○ | | ○ | | 5.88 | 10.2 | 13.1 | 15.6 | 18.6 | 26.3 | 32.2 | 37.1 | 41.5 | 47.3 | 52.5 | 58.7 | 71.9 | 3.0 | — |
| 346 | | | ○ | | 6.32 | 10.9 | 14.1 | 16.7 | 20.0 | 28.3 | 34.6 | 40.0 | 44.7 | 51.0 | 56.5 | 63.2 | 77.4 | 3.1 | — |
| 371 | | | ○ | | 6.77 | 11.7 | 15.1 | 17.9 | 21.4 | 30.3 | 37.1 | 42.8 | 47.9 | 54.6 | 60.6 | 67.7 | 82.9 | 3.2 | — |
| 396 | | | ○ | | 7.23 | 12.5 | 16.2 | 19.1 | 22.8 | 32.3 | 39.6 | 45.7 | 51.1 | 58.2 | 64.6 | 72.2 | 88.5 | 3.3 | — |
| 420 | | | ○ | | 7.67 | 13.3 | 17.1 | 20.3 | 24.3 | 34.3 | 42.0 | 48.5 | 54.3 | 61.9 | 68.7 | 76.8 | 94.0 | 3.4 | — |
| 445 | ○ | | ○ | | 8.12 | 14.1 | 18.2 | 21.5 | 25.7 | 36.3 | 44.5 | 51.4 | 57.5 | 65.5 | 72.7 | 81.3 | 99.5 | 3.5 | — |
| 470 | | | ○ | | 8.58 | 14.9 | 19.2 | 22.7 | 27.1 | 38.4 | 47.0 | 54.3 | 60.7 | 69.2 | 76.7 | 85.8 | 105 | 3.6 | — |
| 495 | | | ○ | | 9.04 | 15.7 | 20.2 | 23.9 | 28.6 | 40.4 | 49.5 | 57.1 | 63.8 | 72.8 | 80.8 | 90.3 | 111 | 3.7 | — |
| 519 | | | ○ | | 9.48 | 16.4 | 21.2 | 25.1 | 30.0 | 42.4 | 51.9 | 60.0 | 67.0 | 76.4 | 84.8 | 94.8 | 116 | 3.8 | — |
| 544 | | | ○ | | 9.93 | 17.2 | 22.2 | 26.3 | 31.4 | 44.4 | 54.4 | 62.8 | 70.2 | 80.1 | 88.8 | 99.3 | 122 | 3.9 | — |
| 569 | ○ | | | ○ | 10.4 | 18.0 | 23.2 | 27.5 | 32.8 | 46.4 | 56.9 | 65.7 | 73.4 | 83.7 | 92.9 | 104 | 127 | 4.0 | — |
| 594 | | | | ○ | 10.8 | 18.8 | 24.2 | 28.7 | 34.3 | 48.5 | 59.4 | 68.5 | 76.6 | 87.4 | 96.9 | 108 | 133 | 4.1 | — |
| 717 | ○ | | | ○ | 13.1 | 22.7 | 29.3 | 34.6 | 41.4 | 58.6 | 71.7 | 82.8 | 92.6 | 106 | 117 | 131 | 160 | 4.5 | — |
| 767 | | | | ○ | 14.0 | 24.3 | 31.3 | 37.0 | 44.3 | 62.6 | 76.7 | 88.5 | 99.0 | 113 | 125 | 140 | 171 | 4.6 | — |
| 890 | ○ | | | ○ | 16.2 | 28.1 | 36.3 | 43.0 | 51.4 | 72.7 | 89.0 | 103 | 115 | 131 | 145 | 163 | 199 | 5.0 | — |
| 1040 | ○ | | | ○ | 19.0 | 32.9 | 42.5 | 50.2 | 60.0 | 84.8 | 104 | 120 | 134 | 153 | 170 | 190 | 232 | 5.4 | — |

●: Available with/without strainer ○: Available without strainer

Solid Stream

Standard Solid Stream Jet
CCP/CP series

Sister Products

■ **Small orifice diameter CP series**

Solid Stream

| Orifice diameter code | Pipe connection size | | Spray capacity (ℓ/min) | | | | | | | | | | | | Orifice diameter (mm) | Strainer mesh size |
|-----------------------|----------------------|------|------------------------|-------|---------|-------|---------|-------|---------|-------|---------|-------|--------|--------|-----------------------|--------------------|
| | R1/8 | R1/4 | 1 MPa | 2 MPa | 2.5 MPa | 3 MPa | 3.5 MPa | 4 MPa | 4.5 MPa | 5 MPa | 6.5 MPa | 8 MPa | 10 MPa | 15 MPa | | |
| ø0.1 | ● | ● | 0.020 | 0.028 | 0.031 | 0.034 | 0.037 | 0.039 | 0.042 | 0.044 | 0.050 | 0.056 | 0.062 | 0.076 | 0.1 | 200 |
| ø0.15 | ● | ● | 0.044 | 0.063 | 0.070 | 0.077 | 0.083 | 0.089 | 0.094 | 0.099 | 0.113 | 0.126 | 0.141 | 0.172 | 0.15 | 200 |
| ø0.2 | ● | ● | 0.08 | 0.11 | 0.13 | 0.14 | 0.15 | 0.16 | 0.17 | 0.18 | 0.20 | 0.22 | 0.25 | 0.31 | 0.2 | 200 |
| ø0.25 | ● | ● | 0.12 | 0.18 | 0.20 | 0.22 | 0.23 | 0.25 | 0.26 | 0.28 | 0.32 | 0.35 | 0.39 | 0.48 | 0.25 | 200 |
| ø0.3 | ● | ● | 0.18 | 0.25 | 0.28 | 0.31 | 0.33 | 0.36 | 0.38 | 0.40 | 0.46 | 0.51 | 0.56 | 0.69 | 0.3 | 150 |
| ø0.4 | ● | ● | 0.32 | 0.45 | 0.50 | 0.55 | 0.59 | 0.63 | 0.67 | 0.71 | 0.81 | 0.90 | 1.00 | 1.23 | 0.4 | 150 |
| ø0.5 | ● | ● | 0.50 | 0.70 | 0.79 | 0.86 | 0.93 | 0.99 | 1.05 | 1.11 | 1.27 | 1.40 | 1.57 | 1.92 | 0.5 | 100 |
| ø0.6 | ● | ● | 0.72 | 1.01 | 1.13 | 1.24 | 1.34 | 1.43 | 1.52 | 1.60 | 1.83 | 2.02 | 2.26 | 2.77 | 0.6 | 100 |
| ø0.7 | ● | ● | 0.97 | 1.37 | 1.53 | 1.68 | 1.81 | 1.94 | 2.06 | 2.17 | 2.47 | 2.74 | 3.07 | 3.76 | 0.7 | 50 |
| ø0.8 | ● | ● | 1.27 | 1.80 | 2.01 | 2.20 | 2.38 | 2.54 | 2.69 | 2.84 | 3.24 | 3.59 | 4.02 | 4.92 | 0.8 | 50 |

●: Available with/without strainer

[Note] The above nozzles are manufactured for specific orifice diameters, therefore spray capacity is not guaranteed.

How to order

Please inquire or order for a specific nozzle using this coding system.

① **Standard CP and CCP series**

⟨Example⟩ 1/8M CP 25 S303 W

| Pipe conn. size ² | Series | Spray capacity code | Material | Strainer |
|------------------------------|--------|---------------------|----------|------------------------------------|
| 1/8M | CCP | 25 | S303 | W (with strainer) |
| 1/4x1/8M | CP | ∅ | B | (Blank denotes "without strainer") |
| 1/4M | | 1040 | | |
| 3/8M | | | | |

② **Small orifice diameter CP series**

⟨Example⟩ 1/8M CP ø0.1 S303 W

| Pipe conn. size ² | Orifice diameter code | Material | Strainer |
|------------------------------|-----------------------|----------|------------------------------------|
| 1/8M | ø0.1 | S303 | W (with strainer) |
| 1/4x1/8M | ∅ | B | (Blank denotes "without strainer") |
| | ø0.8 | | |

*2) "M" indicates male thread ("R" of the ISO standard) and "F" indicates female thread ("Rc" of the ISO standard), e.g. 1/8M = R1/8. In the standard CP series, when spray capacity code is 25–210, pipe connection size for R1/4 is indicated as "1/4x1/8M". In the small orifice diameter CP series, pipe connection size for R1/4 is indicated as "1/4x1/8M".