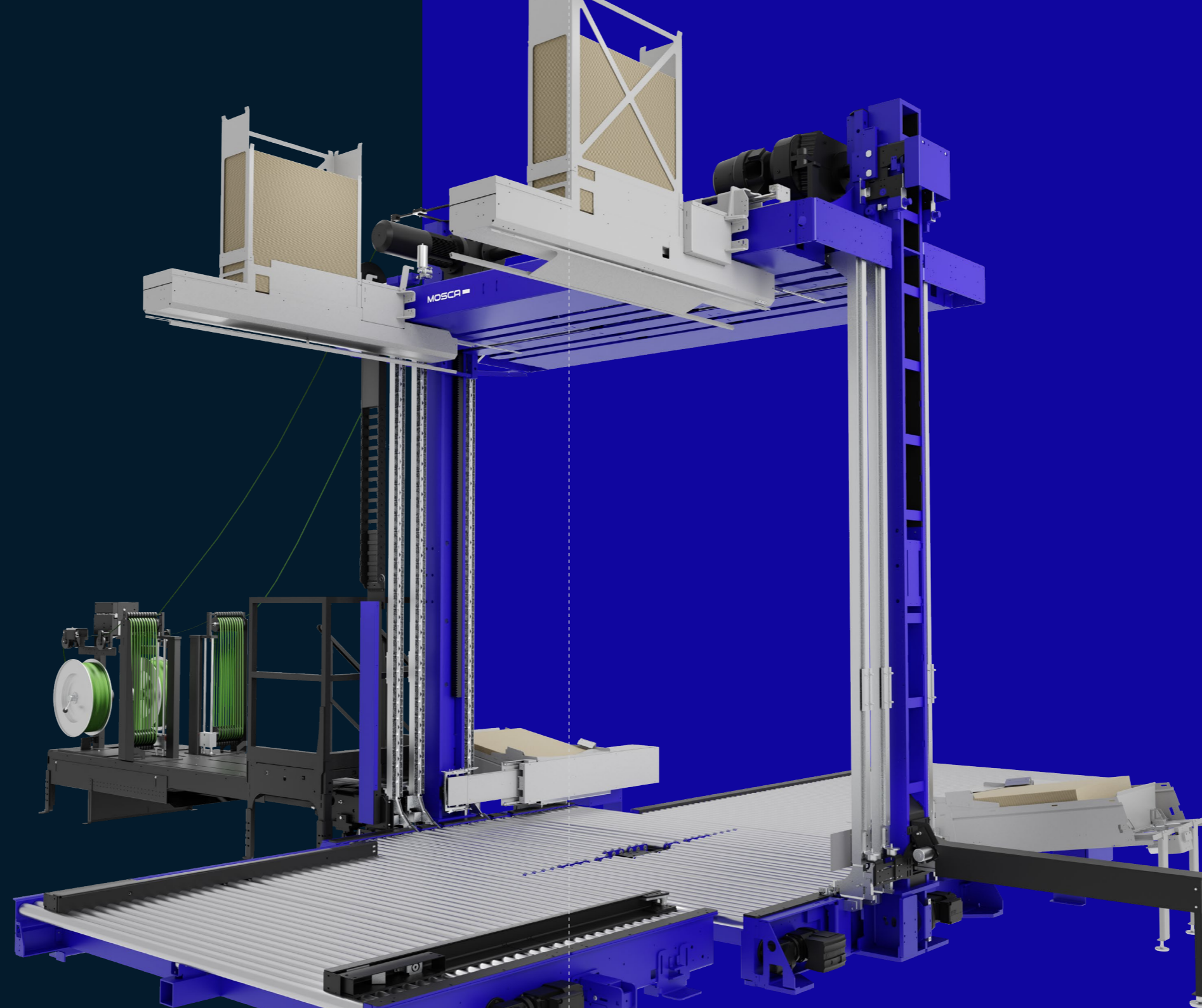


# PALLET PACKING PRESS

REVOLUTIONIZE YOUR  
END-OF-LINE [PACKAGING]  
PERFORMANCE

MOSCA



NONSTOP RESPONSIBLE  
NONSTOP RELIABLE  
NONSTOP INTELLIGENT  
NONSTOP PROGRESSIVE

Fully Automatic Pallet Packing Press



Newspapers & Print Media,  
Mail Order & Logistics, Food & Beverage,  
Corrugated Cardboard & Paper



SoniXs Sealing Unit | Top mounted



Energy-efficient electrical drives



For PET straps



Compression of 30,000 or 50,000 N



Edge protection (option)



NONSTOP PERFORMANCE

# PALLET PACKING PRESS

## FULLY AUTOMATIC PALLET PACKING PRESS FOR SECURING TRANSPORT GOODS

Pallet packing presses are designed to strap a wide variety of palletised goods - from print media, to food or corrugated cardboard. The machines apply 30,000/50,000 N of force to compress packages before the strapping cycle thus preventing the strap from loosening during transport. Two to four strap lances ensure optimum load security and maximum productivity. The top-mounted, weight-reduced SoniXs sealing unit (32 kg) is secured by quick-release fasteners and can be easily removed for maintenance.

For more demanding applications, the pallet packing press is also available with high-speed drive systems. This increases compression force to 33,000/55,000 N and enhances cycle performance. Two independent braking systems ensure maximum safety.

### TECHNICAL DATA

Performance:  
Up to 220 pallets / h. without edge protection\*  
Up to 185 pallets / h. with top and bottom edge protection\*  
\*with High Speed Package, twofold verticle strapped, transport 24m/min (depending on product size)

Passage widths in mm:  
1,800 - 3,200 mm (in 200 mm steps)

Conveying Height:  
Min. Conveyor Height 300 mm  
350 mm (Turntable with driven roller conveyor)

Straps:  
Standard machine grade PET straps  
Width: SoniXs: 9,5 - 12 mm  
KSR-2: 9,5 - 15,5 mm  
Thickness: SoniXs: 0,54 - 0,66 mm  
KSR-2: 0,54 - 1,0 mm

Strap tension: 200 - 2,500 N infinitely adjustable

Strap Guide Distance:  
2 strap guides: 440 mm or 625 mm

3 strap guides: 440 mm and 625 mm

4 strap guides: 440 mm and 810 mm centered,  
625 mm asymmetrical  
(185 mm possible),  
440 and 625 centered

Strap Coil Dispenser:  
Core diameter: 406 mm

Electricity:  
Voltage: 400 V, 50 Hz, 3L+N+PE  
(others on request)  
Power consumption: approx. 23,5 KVA (KCK-131),  
depending on equipment

Weight: (without options)  
approx. 5,000 kg

### STANDARD FEATURES

Top-mounted SoniXs ultrasonic sealing unit

Up to four strap lances for palletised products

Strap guide distance of 440, 625 and 810 mm

1-2 sealing units laterally movable

Siemens PLC control system

Operation via Siemens 9" touch panel

Can be integrated into any production line

Potential-free contacts to upstream and  
downstream machines

Strapping with medium compression  
(up to 30,000 N - version KC\_)

Strapping with high compression  
(up to 50,000 N - version KP\_)

Different Models:  
K\_R, Basic Model | Driven roller conveyor

K\_K, Version | Driven roller conveyor with lift  
turncross

K\_Z, Version | Driven roller conveyor with centering  
device

K\_A, Version | Driven roller conveyor with lift  
turncross and centering device

K\_T, Version | Turntable with driven roller conveyor

### OPTIONS

Three-part signal light including low strap detection

Underfeed channels (except K\_A and K\_Z)

Automatic, electric edge protector feed, top and  
bottom

Pallet length scanning

High Speed Drive  
(compression up to 33,000 N or 55,000 N)

High Speed Package for higher strapping  
performance

Strap sealing unit BSG 4

Safety guards

Air conditioning equipment

Data interface

Operating unit with 12" Touchpanel

Configurable strapping programs

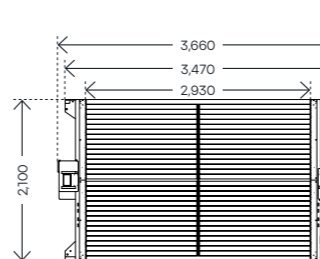
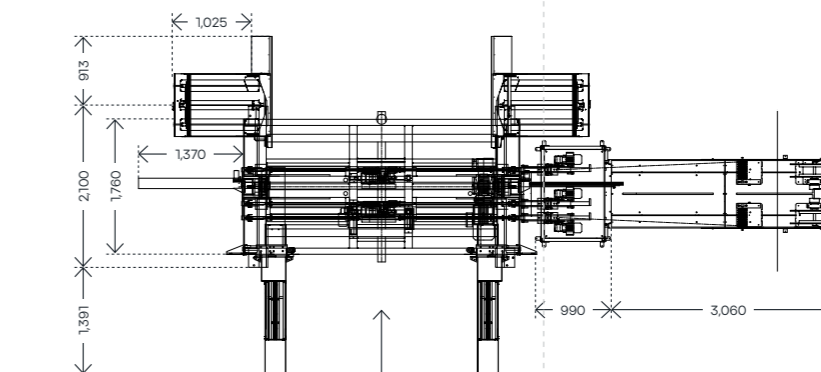
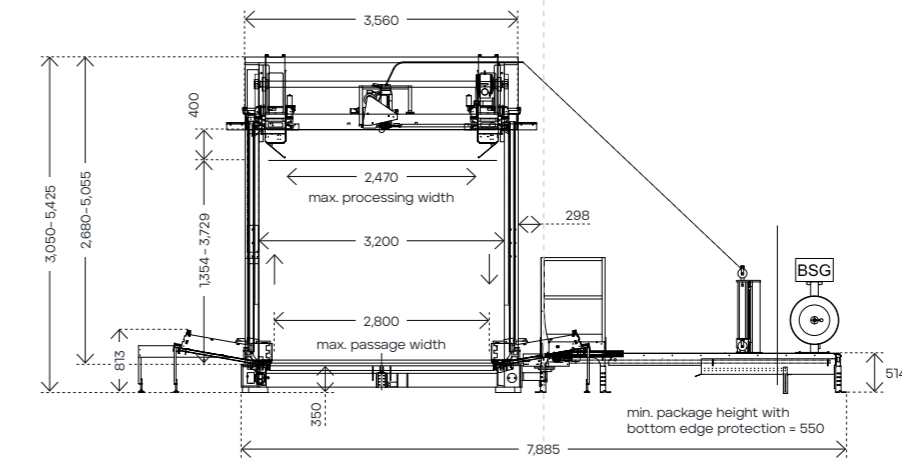
### CONTACT US FOR A PERFORMANCE CONSULTATION!

mosca.com

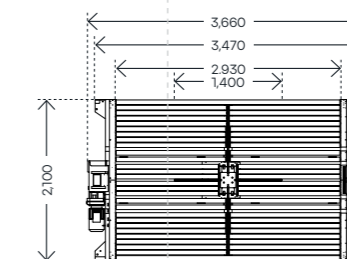
Mosca GmbH  
Gerd-Mosca-Straße 1 · 69429 Waldbrunn

info@mosca.com · +49 6274 / 932-0

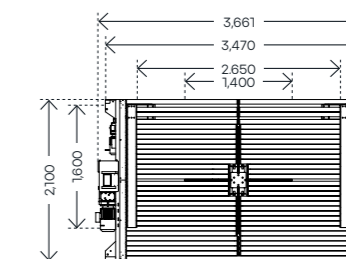
### DIMENSIONS / WORKING WIDTH MACHINE (in mm)



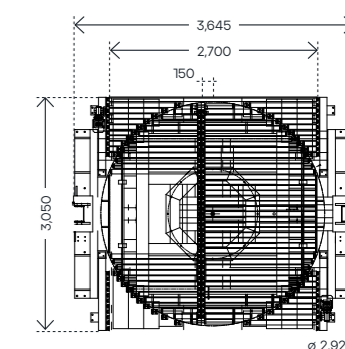
K\_R Driven roller conveyor



K\_K Driven roller conveyor  
with lift turncross



K\_A Driven roller conveyor with lift  
turncross and centering device  
K\_Z Driven roller conveyor with  
centering device



K\_T Turntable with driven  
roller conveyor

