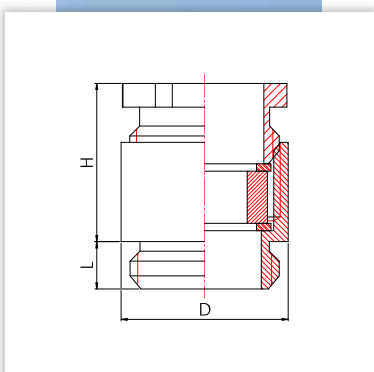
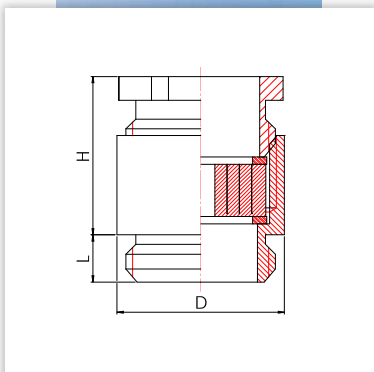


# Kabelverschraubungen / Cable Glands

wege® M Classic rund / round

<b>Material</b>	Messing vernickelt
<b>Dichtring</b>	<ul style="list-style-type: none"> <li>① NR/NBR</li> <li>② CR/EPDM</li> </ul>
<b>Schutzklasse</b>	IP54
<b>Temperaturbereich</b>	<ul style="list-style-type: none"> <li>① -40 °C bis +90 °C</li> <li>② -30 °C bis +120 °C</li> </ul>

<b>material</b>	brass nickel-plated
<b>sealing ring</b>	<ul style="list-style-type: none"> <li>① NR/NBR</li> <li>② CR/EPDM</li> </ul>
<b>protection class</b>	IP54
<b>range of temperature</b>	<ul style="list-style-type: none"> <li>① -40 °C to +90 °C</li> <li>② -30 °C to +120 °C</li> </ul>



Gewinde thread		Dichtring sealing ring		D	H	L		Bestell-Nr. ref.-number
----------------	--	------------------------	--	---	---	---	--	-------------------------

kurzes Anschlussgewinde / short connection thread

M 12 x 1,5	4 - 6	S	②	12	14	15	5	100	011.1200.0
M 16 x 1,5	2 - 10	UNI	②	16	18	16	5	100	011.1600.7
M 16 x 1,5	8 - 10	S	②	15	18	16	5	100	010.1609.0
M 20 x 1,5	3 - 14	UNI	②	20	22	19	6	50	011.2000.7
M 20 x 1,5	8 - 10	S	①	18	22	17	6	50	010.2011.0
M 20 x 1,5	10 - 12	S	①	20	22	19	6	50	010.2013.0
M 20 x 1,5	12 - 14	S	①	22	24	20	6	50	010.2016.0
M 25 x 1,5	7,5 - 18	UNI	②	25	27	22	7	50	011.2500.7
M 25 x 1,5	17 - 19	S	①	28	30	22	7	50	010.2521.0
M 32 x 1,5	15 - 25	UNI	②	32	34	24	8	25	011.3200.7
M 32 x 1,5	26 - 27	S	①	37	39	25	8	25	010.3229.0
M 40 x 1,5	22 - 33	UNI	②	40	42	26	8	20	011.4000.7
M 40 x 1,5	23 - 34	UNI	①	47	50	30	8	10	010.4036.6
M 50 x 1,5	31 - 42	UNI	②	50	52	29	9	5	011.5000.7
M 50 x 1,5	39 - 41	S	①	54	57	34	9	5	010.5042.0
M 63 x 1,5	40 - 51	UNI	②	64	66	35	10	5	011.6300.7
M 63 x 1,5	35 - 46	UNI	①	60	68	36	10	5	010.6348.6

Pg 7	4 - 6	S	①	13	14	15	5	100	010.0700.0
Pg 9	8 - 10	S	①	15	17	16	6	100	010.0900.0
Pg 11	8 - 10	S	①	18	20	17	6	50	010.1100.0
Pg 13,5	10 - 12	S	①	20	22	19	6,5	50	010.1300.0
Pg 16	12 - 14	S	①	22	24	20	6,5	50	010.1600.0
Pg 21	17 - 19	S	①	28	30	22	7	50	010.2100.0
Pg 29	26 - 28	S	①	37	39	25	8	25	010.2900.0
Pg 36	23 - 34	UNI	①	47	50	29	9	20	010.3600.6
Pg 42	39 - 41	S	①	54	57	33	10	10	010.4200.0

G 1/4"	4 - 6	S	①	13	14	15	5	100	010.0014.0
G 5/8"	12 - 14	S	①	22	24	20	6,5	50	010.0058.0
G 1"	15 - 25	UNI	②	32	35	25	8	50	010.0100.7

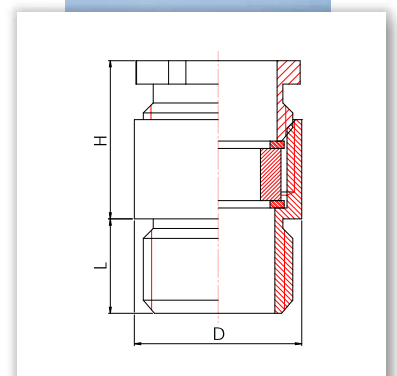
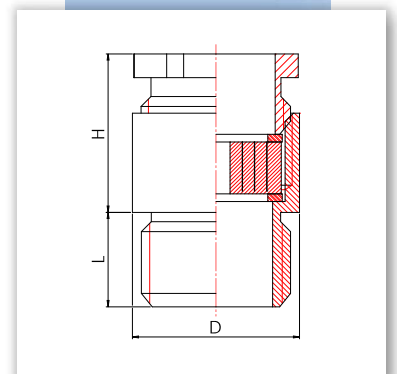
Gewinde thread		Dichtring sealing ring		D	H	L		Bestell-Nr. ref.-number
-------------------	---	---------------------------	---	---	---	---	---	----------------------------

langes Anschlussgewinde / long connection thread

M 12 x 1,5	4	- 6	S	②	12	14	15	10	100	021.1200.0
M 16 x 1,5	2	- 10	UNI	②	16	18	16	10	100	021.1600.7
M 16 x 1,5	4	- 11	UNI	②	15	18	16	10	100	020.1609.6
M 20 x 1,5	3	- 14	UNI	②	20	22	19	10	50	021.2000.7
M 20 x 1,5	6,5	- 13,5	UNI	①	18	22	17	10	50	020.2011.6
M 20 x 1,5	6,5	- 13,5	UNI	①	20	22	19	10	50	020.2013.6
M 20 x 1,5	6,5	- 16	UNI	①	22	24	20	10	50	020.2016.6
M 25 x 1,5	7,5	- 18	UNI	②	25	27	22	11	25	021.2500.7
M 25 x 1,5	9	- 20	UNI	①	28	30	22	11	50	020.2521.6
M 32 x 1,5	15	- 25	UNI	②	32	34	24	13	25	021.3200.7
M 32 x 1,5	17	- 28	UNI	①	37	39	25	13	25	020.3229.6
M 40 x 1,5	22	- 33	UNI	②	40	42	26	13	20	021.4000.7
M 40 x 1,5	23	- 34	UNI	①	47	50	30	13	10	020.4036.6
M 50 x 1,5	31	- 42	UNI	②	50	52	29	14	5	021.5000.7
M 50 x 1,5	29	- 40	UNI	①	54	57	34	14	5	020.5042.6
M 63 x 1,5	40	- 51	UNI	②	64	66	35	14	5	021.6300.7
M 63 x 1,5	35	- 46	UNI	①	60	68	36	14	5	020.6348.6

Pg 11	6,5	- 13,5	UNI	①	18	20	17	15	50	020.1100.6
Pg 13,5	6,5	- 13,5	UNI	①	20	22	19	15	50	020.1300.6
Pg 16	6,5	- 16	UNI	①	22	24	20	15	50	020.1600.6
Pg 21	9	- 20	UNI	①	28	30	22	15	50	020.2100.6
Pg 29	17	- 28	UNI	①	37	39	25	15	50	020.2900.6

G 1/4"	4	- 6	S	①	13	14	15	14	100	020.0014.0
G 3/8"	10	- 12	S	①	20	22	19	14,5	50	020.1338.0
G 1/2"	6,5	- 16	UNI	①	22	24	20	14,5	50	020.1612.6
G 5/8"	12	- 14	S	①	22	24	20	14,5	50	020.0058.0



**Universal (UNI) Dichtring**  
Universal (UNI) sealing ring



**Standard (S) Dichtring**  
Standard (S) sealing ring



• Weitere Dichtringe – Seite 88/89

• More sealing rings – page 88/89