

# MODULAR CONTAINER PLANS





## About Us

Module-T is specialised in the Design, Manufacturing and Installation of modular containers and fully-equipped prefabricated buildings on the worksites of companies operating in the fields of building and public works, oil, gas and mining.

With over 20 years experience as developers of large- scale worksite camps in 6 continents, Module-T exports and installs modular containers, prefabricated and modular buildings with all the necessary equipment for offices, housing, sanitary facilities (WC and showers), locker rooms, meeting rooms, infirmaries, kitchens, canteens, workshops, security booths and warehouses.

The structure and steel chassis, the sandwich panels, as well as the joinery for doors and windows are manufactured and assembled in our factories in Turkey. Our annual production capacity is equal to 65,000 20ft modular containers.

The quality of our service and production from the first contact to the installation on site, and a wide range of modular solutions at very competitive prices are the main advantages that have allowed Module-T to position itself on the international scene, developing successful projects, notably in Europe, Africa and South America.

## Quality Certificates



# INDEX

## INDEX

OFFICE CONTAINERS _____	3 - 8
SANITARY CONTAINERS _____	9 - 12
LOCKER CONTAINERS _____	13 - 14
SHOWROOM CONTAINERS _____	15 - 16
STORAGE CONTAINERS _____	17 - 18
CONTAINER HOUSES _____	19 - 24
CANTEEN CONTAINERS _____	25 - 28
CLASSROOM CONTAINERS _____	29 - 30
INFIRMARY CONTAINERS _____	31 - 32
KIOSK & SHOP CONTAINERS _____	33 - 36
OVERSIZE CONTAINER 300 cm WIDTH _____	37 - 40

# OFFICE CONTAINERS



OC-A3000.1  
300x240 cm

10'

OC-A6000.1  
600x240 cm

20'

OC-A6000.2  
600x240 cm

20'



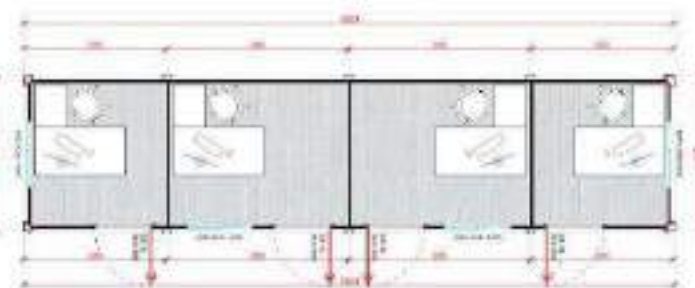
OC-A6000.3 20' 600x240 cm



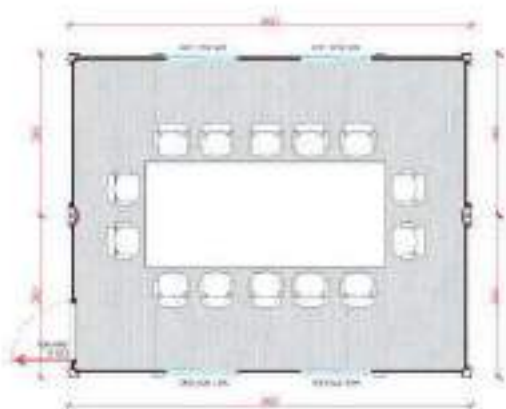
OC-A6000.4 20' 600x240 cm



OC-10 33' 1000x240 cm



OC-11 33' 1000x240 cm



**OC-12** 2x20' 2/600x240 cm

**OC-13** 2x20' 2/600x240 cm



**OC-14** 2x30' 2/900x240 cm



**OC-15** 2x40' 2/1170x240 cm

# OFFICE CONTAINERS



**OC-A10000.1** 33' 1000x240 cm



**OC-16** 33' 1000x240 cm



**OC-A11700.2** 40' 1170x240 cm



**OC-17** 40' 1170x240 cm



**OC-18** 40' 1170x240 cm



**OC-19** 40' 1170x240 cm



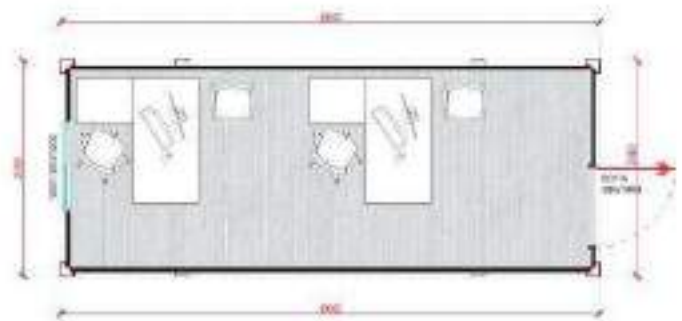
**OC-20** 20' 600x240 cm



**OC-21** 20' 600x240 cm



**OC-22** 20' 600x240 cm



**OC-23** 20' 600x240 cm



**OC-24** 20' 600x240 cm



**OC-25** 20' 600x240 cm



**OC-26** 2x20' 2/600x240 cm



**OC-27** 2x20' 600x240 cm

# OFFICE CONTAINERS



1st Floor



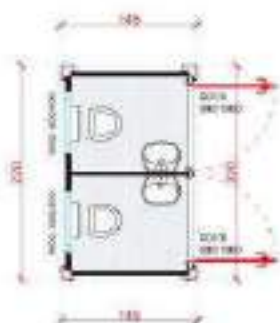
2st Floor







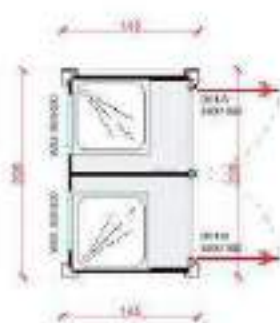
# SANITARY CONTAINERS



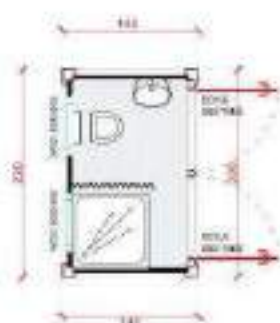
**SN-10**  
220x145 cm **5'**



**SN-11**  
220x145 cm **5'**

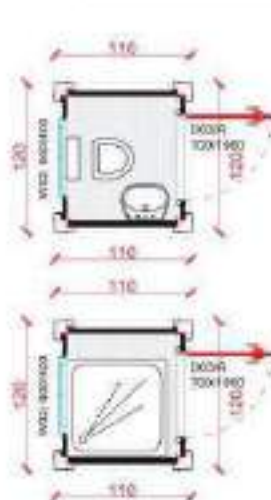


**SN-12**  
220x145 cm **5'**

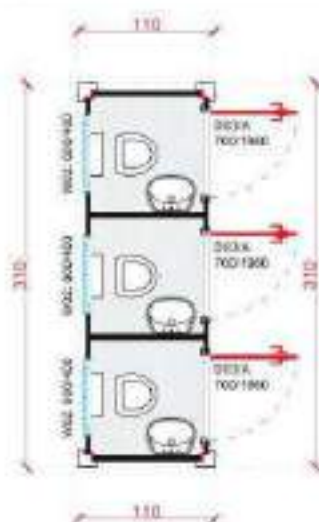


**SN-13**  
220x145 cm **5'**

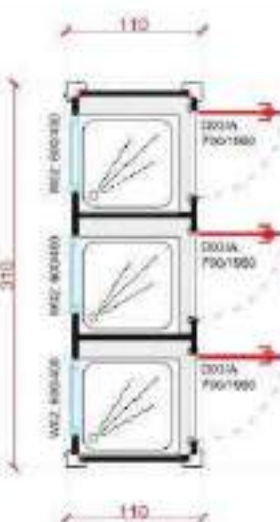
Small Sanitary Cabins (145cm width): Deliverable fully assembled with a shipping container!



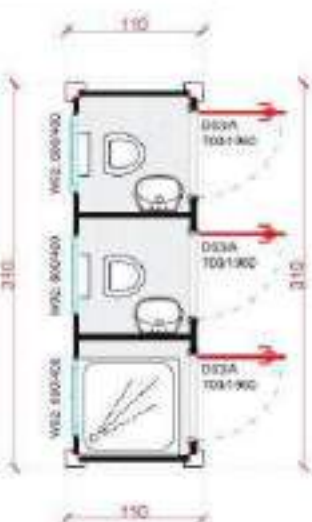
**SN-14/15**  
220x145 cm **5'**



**SN-16**  
220x145 cm **5'**



**SN-17**  
220x145 cm **5'**



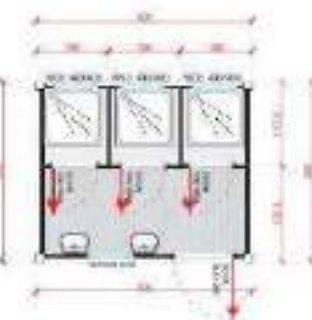
**SN-18**  
220x145 cm **5'**



**SC-A3000.1**  
300x240 cm **8'**



**SC-A3000.2**  
300x240 cm **10'**



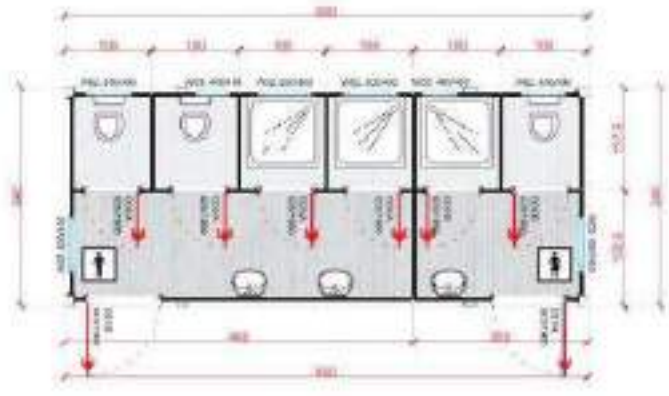
**SC-A3000.3**  
300x240 cm **10'**



**SC-A3000.4**  
300x240 cm **10'**

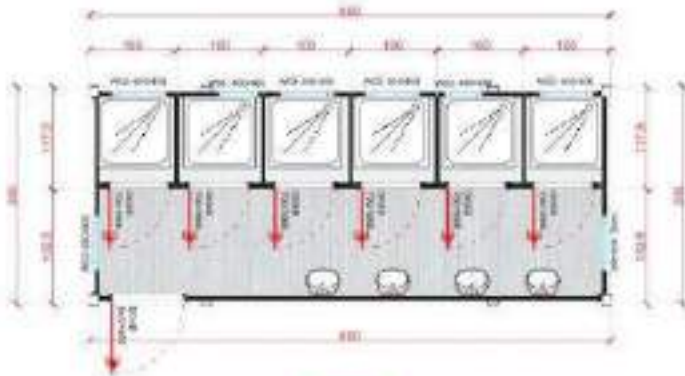


**SC-A6000.1** 20' 600x240 cm

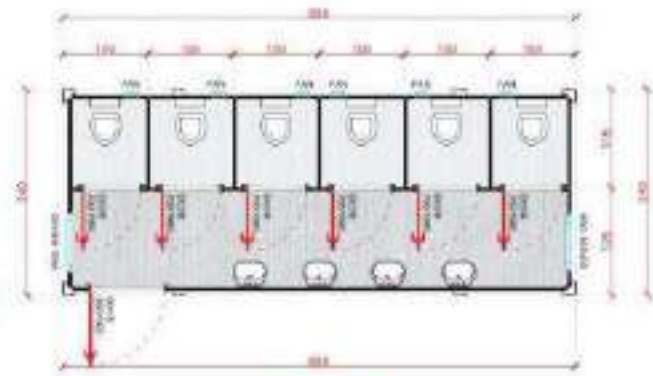


**SC-A6000.2** 20' 600x240 cm

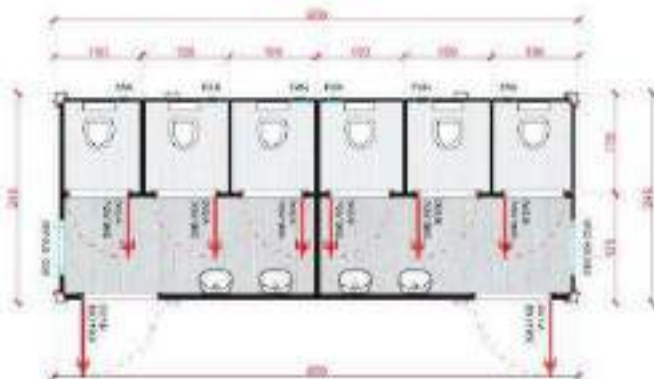
**Sanitary containers** (wc containers and shower containers) are sandwich panel modules used in all construction sites and especially in the living bases of companies operating in the construction and mining sectors.  
**Module-T supplies and installs toilet & shower containers all over the world.**



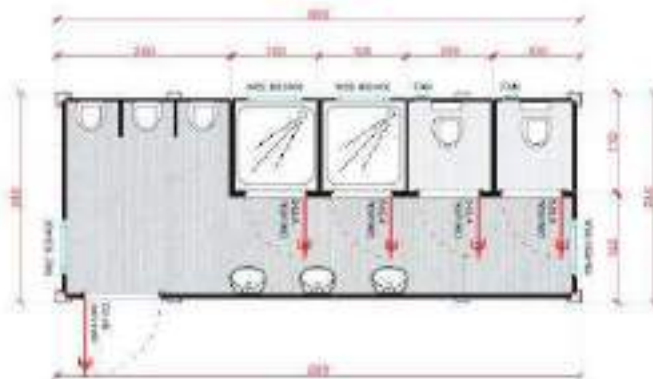
**SC-A6000.4** 20' 600x240 cm



**SN-30** 20' 600x240 cm

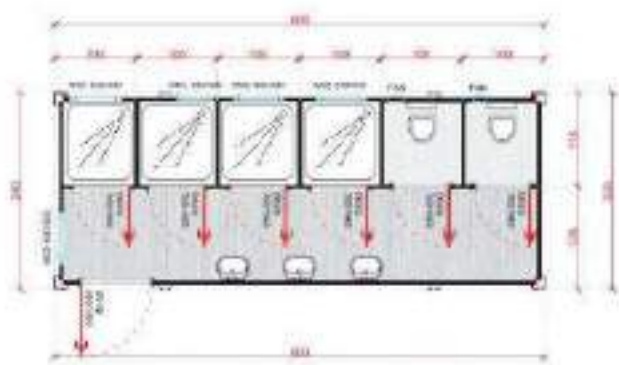


**SN-31** 20' 600x240 cm

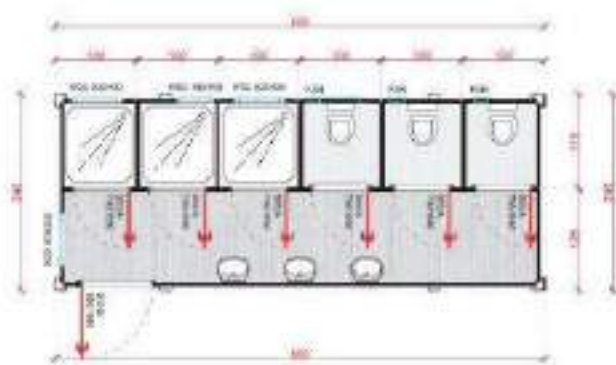


**SN-32** 20' 600x240 cm

# SANITARY CONTAINERS



**SN-33** 20' 600x240 cm



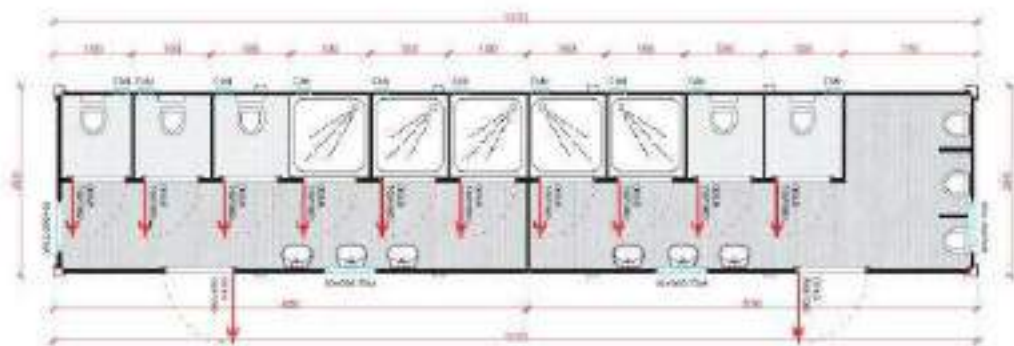
**SN-34** 20' 600x240 cm



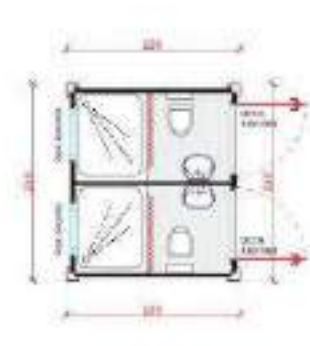
**SN-35** 38' 1170x240 cm



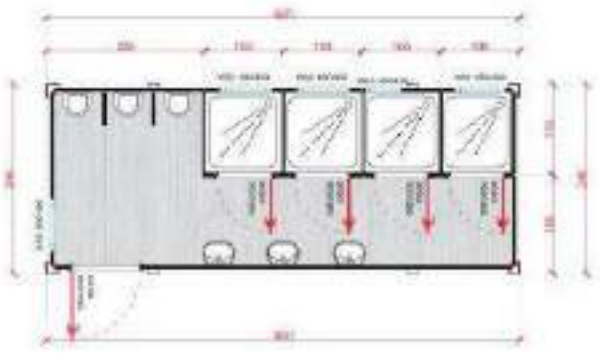
**SN-36** 8' 240x240 cm



**SN-37** 38' 1170x240 cm



**SN-38** 8' 240x220 cm

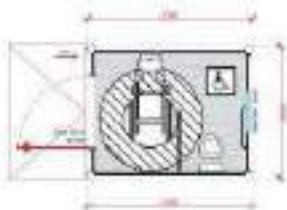


**SN-39** 20' 600x240 cm

**SN-40** 20' 600x240 cm



**SC-A6000.8** 20' 600x240 cm



We produce structures to meet the needs with customized products such as disabled toilets.

**SC-A2000.1** 8' 240x200 cm

# LOCKER CONTAINERS



LC-A3000.1 10'  
300x240 cm

LC-A3000.2 10'  
300x240 cm

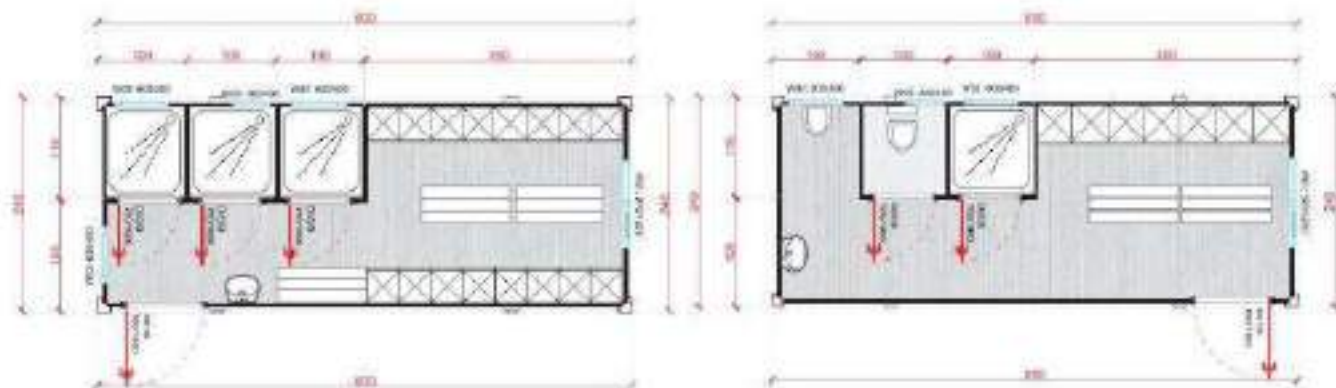
LC-A3000.3 10'  
300x240 cm

LC-A3000.4 10'  
300x240 cm



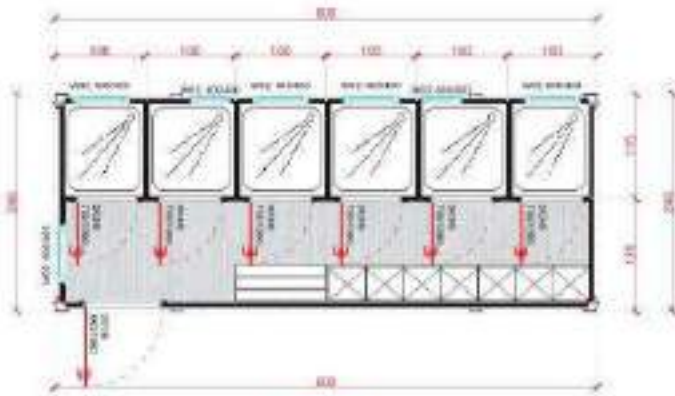
LC-A6000.1 20' 600x240 cm

LC-A6000.2 20' 600x240 cm

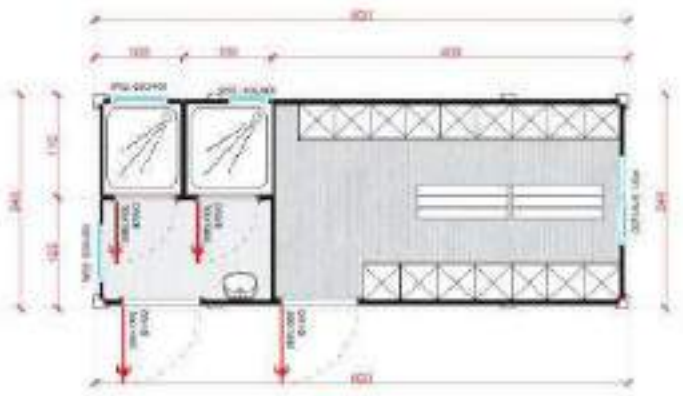


LC-10 20' 600x240 cm

LC-11 20' 600x240 cm



**LC-12** 20' 600x240 cm



**LC-13** 20' 600x240 cm



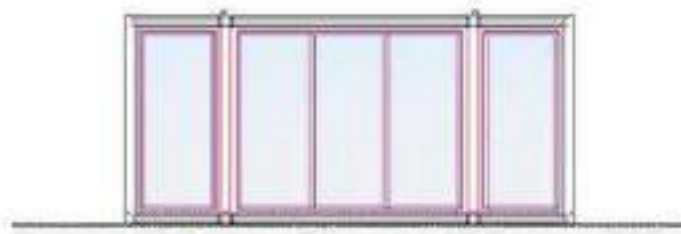
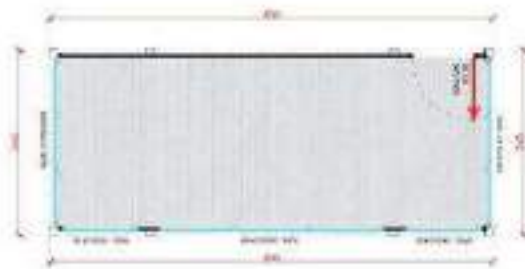
**LC-14** 20' 600x240 cm



**LC-15** 20' 600x240 cm

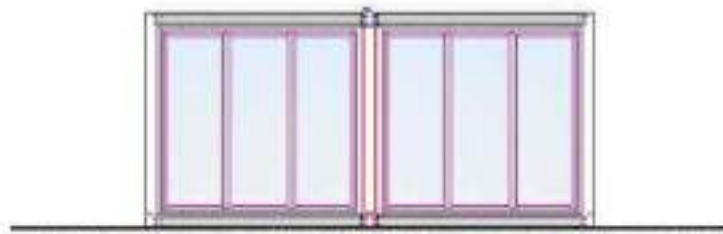


# SHOWROOM CONTAINERS



FRONT VIEW

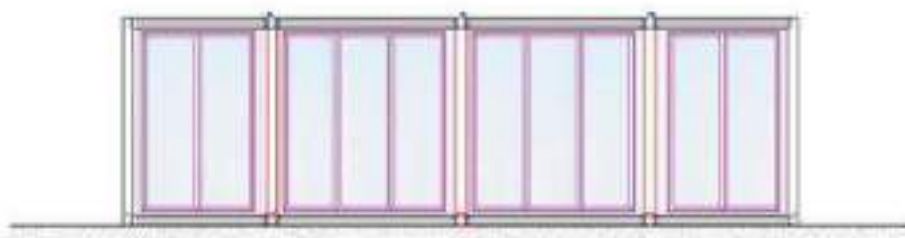
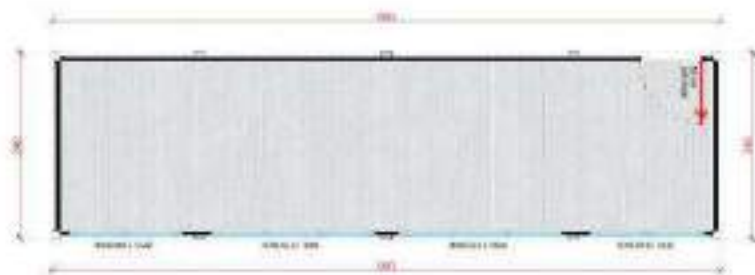
FSC-A6000.1 20' 600x240 cm



FRONT VIEW

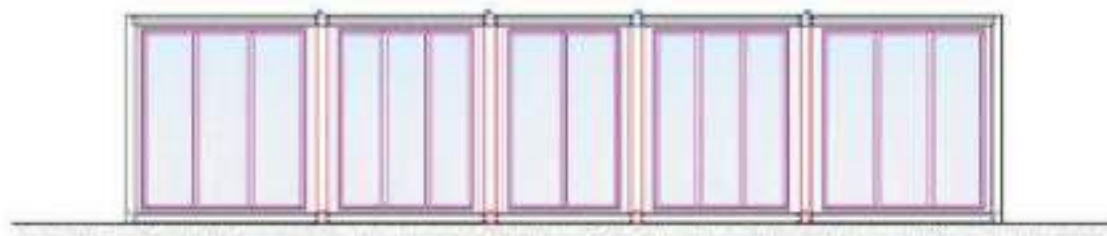
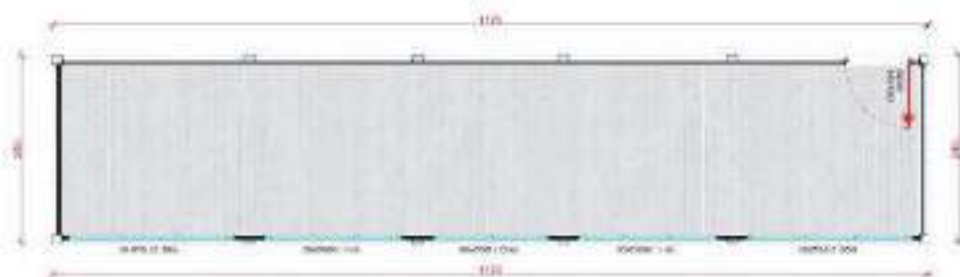
FSC-A6000.2 20' 600x240 cm





FRONT VIEW

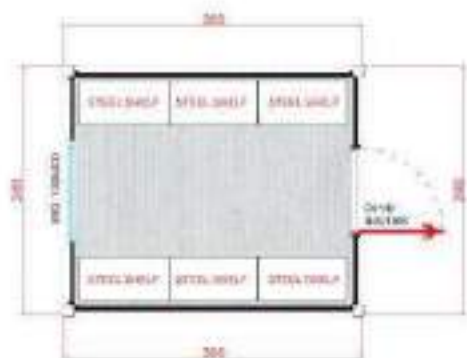
**FSC-A9000.1** 30' 900x240 cm



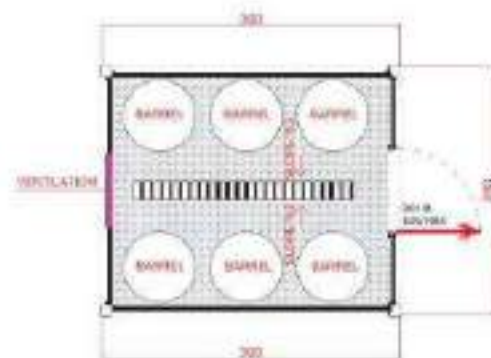
FRONT VIEW

**FSC-A11700.1** 40' 1170x240 cm

# STORAGE CONTAINERS



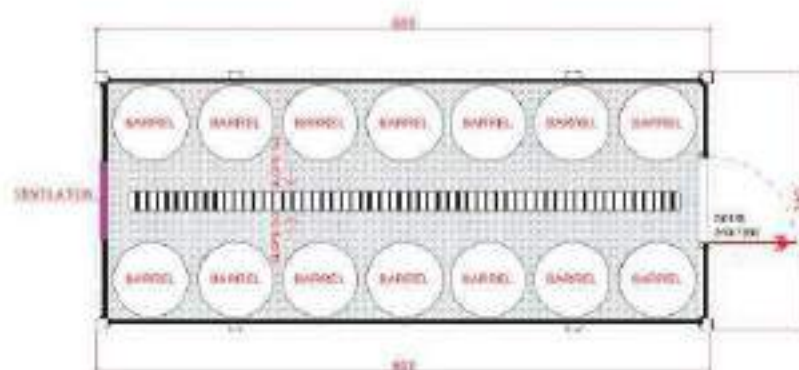
**STC-A3000.1** 10' 300x240 cm



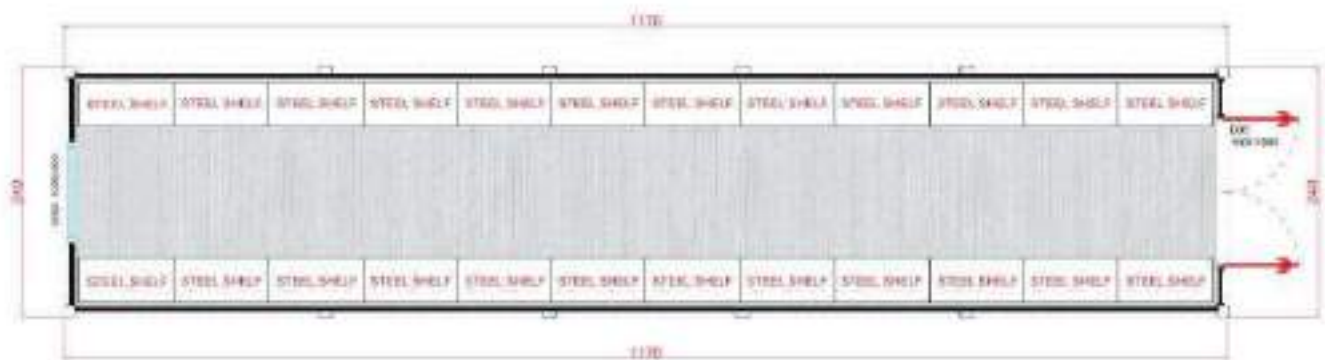
**STC-A3000.2** 10' 300x240 cm



**STC-A6000.1** 20' 600x240 cm



**STC-A6000.2** 20' 600x240 cm



**STC-A11700.1** 40' 1170x240 cm



# CONTAINER HOUSES



CH-A6000.1 20' 600x240 cm



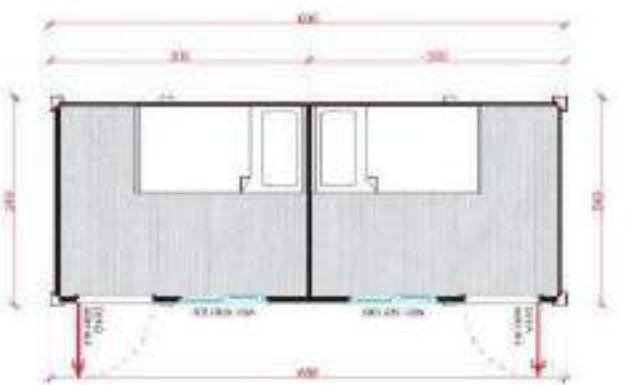
CH-A6000.2 20' 600x240 cm



DC-A6000.1 20' 600x240 cm



DC-A6000.2 20' 600x240 cm



CH-30 20' 600x240 cm



CH-31 20' 600x300 cm



CH-32

20'

600x240 cm



CH-33

20'

600x240 cm



DC-A6000.3

3x20'

3/600x240 cm



DC-A6000.4

3x20'

3/600x240 cm



DC-B11700.1

2/38'

2/1170x240 cm

# CONTAINER HOUSES



CH-34 20' 600x240 cm



CH-35 20' 600x240 cm



CH-36 20' 600x240 cm



CH-37 20' 600x240 cm



**CH-38** 2x20' 2/600x240 cm



**CH-39** 2x20' 2/600x240 cm

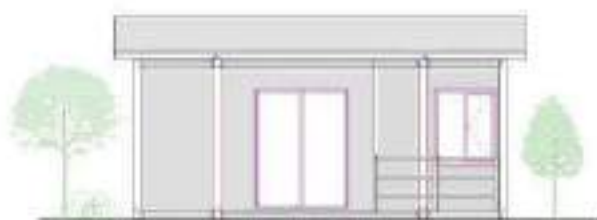


# CONTAINER HOUSES



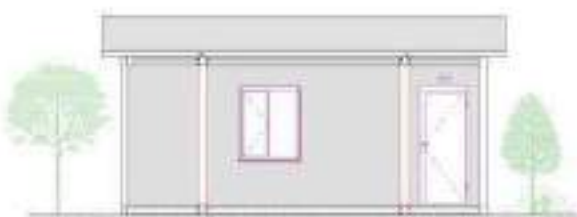
FRONT VIEW

**CH-A6000.3** 2x20' 2/600x240 cm



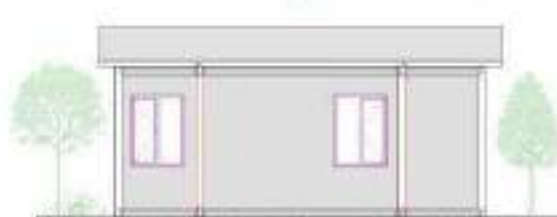
FRONT VIEW

**CH-A6000.4** 2x20' 2/600x240 cm



FRONT VIEW

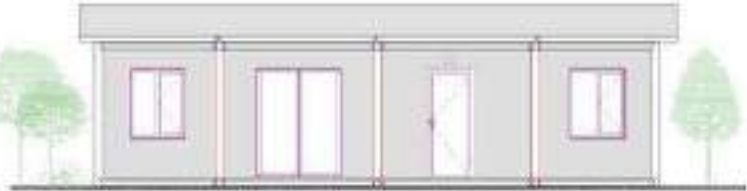
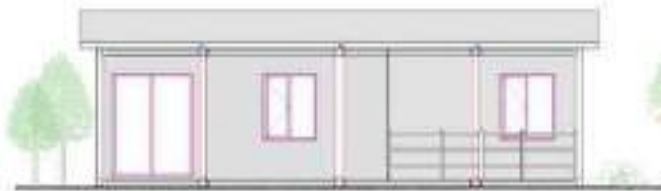
**CH-A6000.5** 2x20' 2/600x240 cm



FRONT VIEW

**CH-A6000.6** 3x20' 3/600x240 cm





FRONT VIEW

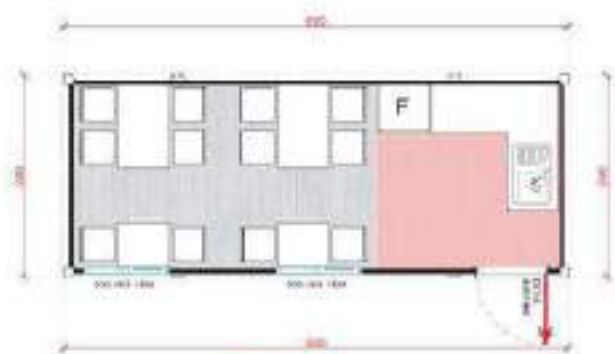
FRONT VIEW

**CH-A6000.7** 2x30' 3/900x240 cm

**CH-A6000.8** 2x33' 2/1000x240 cm



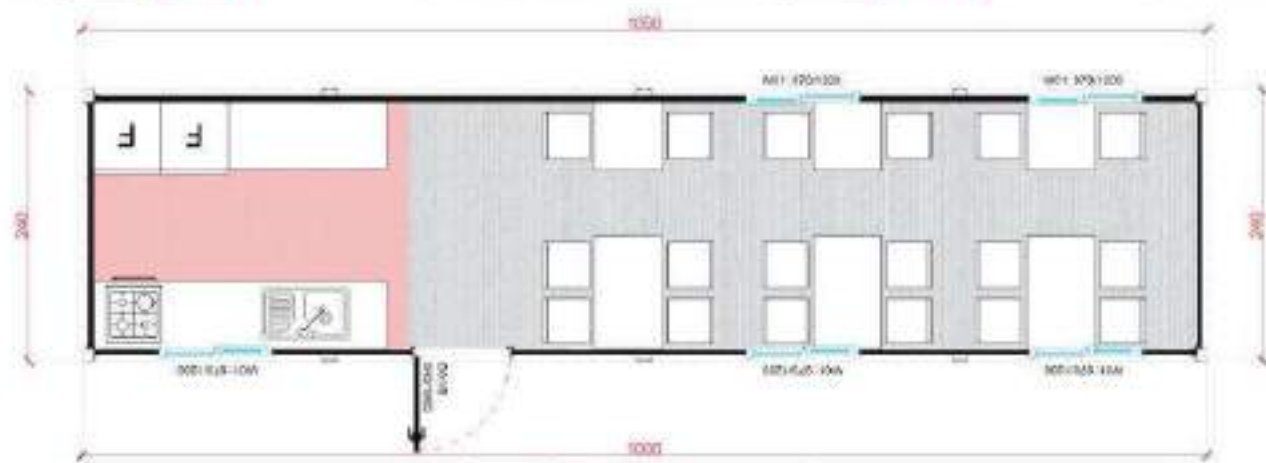
# CANTEEN CONTAINERS



12 PE **20'** HS-10  
600x240 cm



14 PE **26'** HS-11  
800x240 cm



18 PE **33'** HS-12  
1000x240 cm



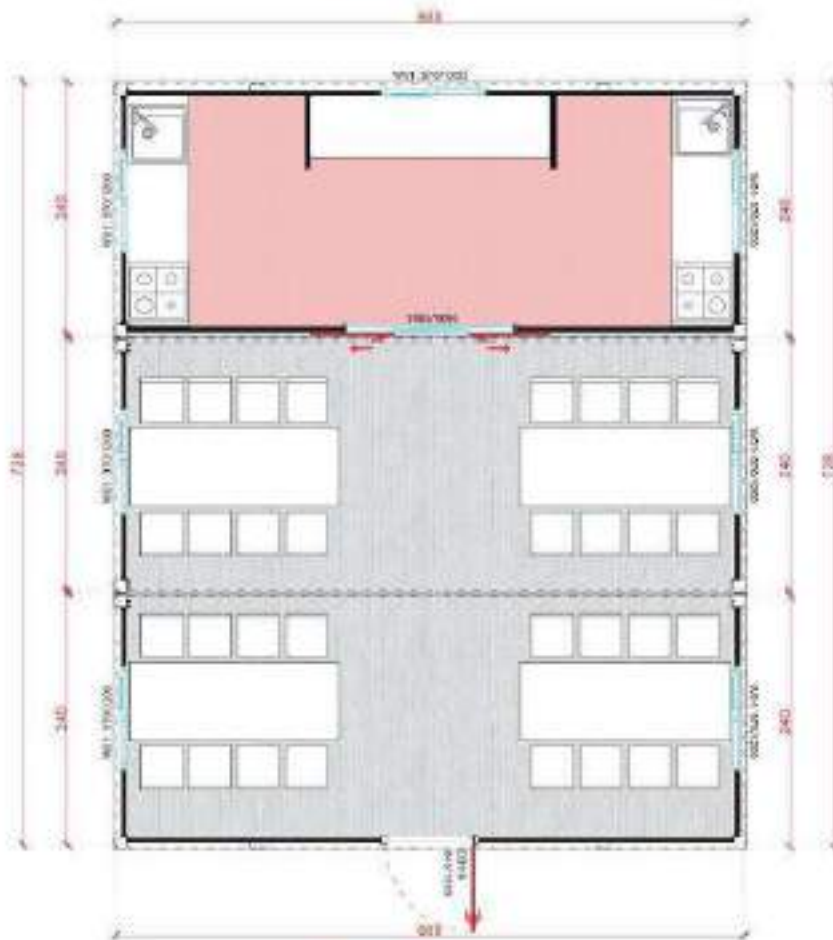
20 PE **2x20'** HS-13  
2/600x240 cm



24 PE **2x33'** HS-14  
2/1000x240 cm



**24**  
**PE** **33'** **HS-15**  
1000x300 cm



**32**  
**PE** **3x20'** **HS-16**  
3/600x240 cm

# CANTEEN CONTAINERS



44  
PE

2/33'

HS-17

2/1000x240 cm



56  
PE

6/20'

HS-18

6/600x240 cm



**52**  
**PE** **4/26'** **HS-19**  
 4/800x240 cm

**72**  
**PE** **4/33'** **HS-20**  
 4/1000x240 cm



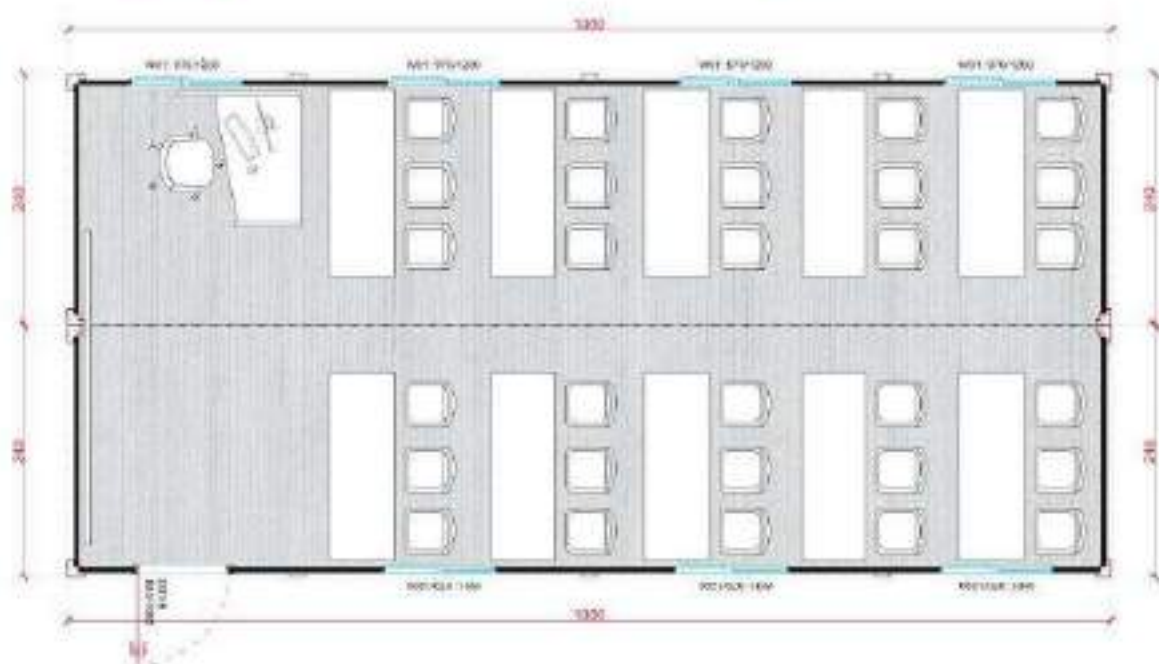
**76**  
**PE** **8x20'** **HS-21**  
 8/600x240 cm

# CLASSROOM CONTAINERS



14 PE **2/20'** MSC-10  
2/600x240 cm

24 PE **3/20'** MSC-11  
3/600x240 cm



30 PE **2/33'** MSC-12  
2/1000x240 cm



45 PE 3/33' MSC-13  
3/1000x240 cm



# INFARMARY CONTAINERS



**IC-30** 20' 600x240 cm



**IC-31** 26' 800x240 cm



**IC-32** 2/20' 2/600x240 cm



**IC-33** 2/20' 2/600x240 cm



**IC-34** 2/20' 2/600x240 cm



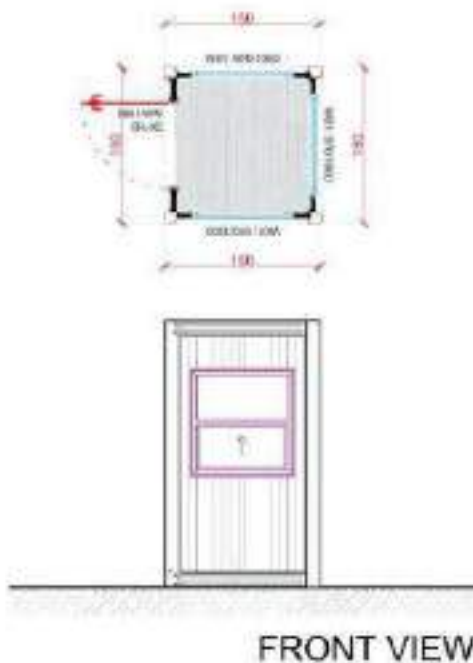


IC-35 33' 1000x240 cm

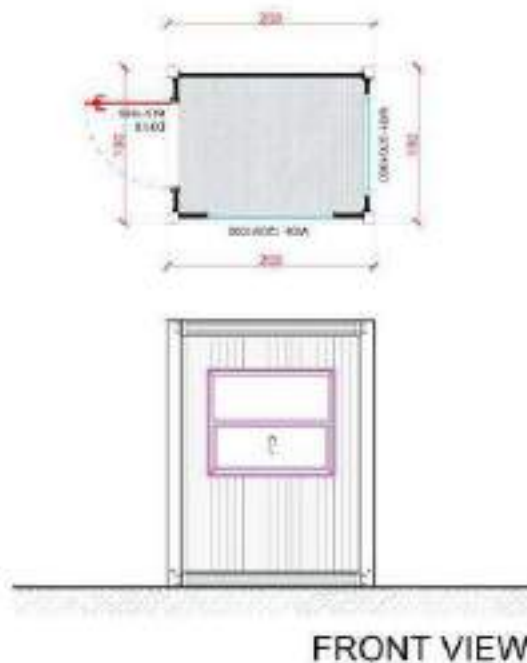


IC-36 2x33' 2100x240 cm

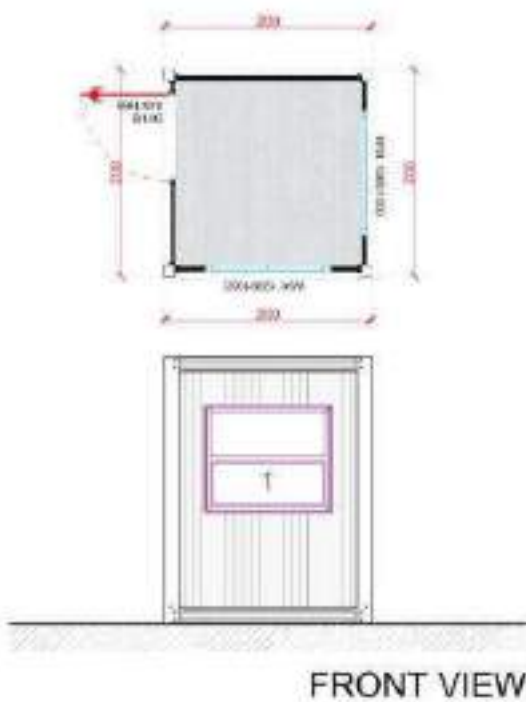
# KIOSK & SHOP CONTAINERS



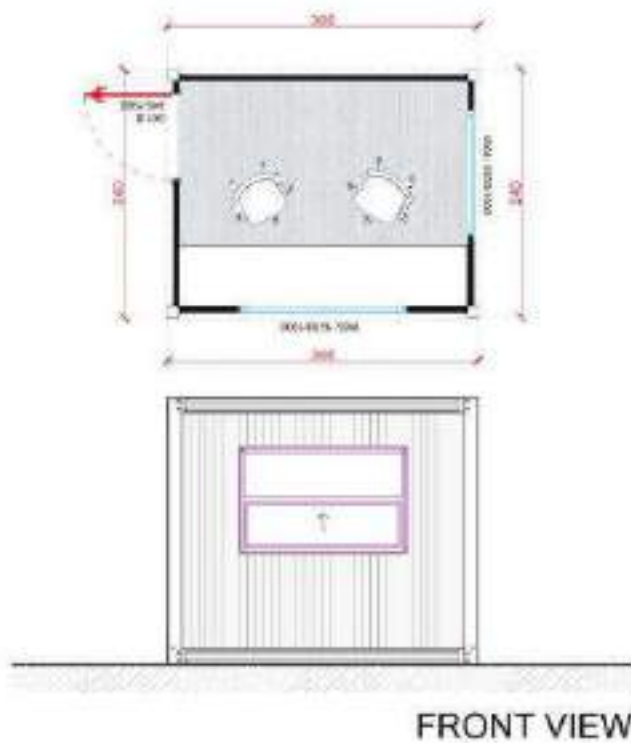
GH-1500.1 5' 150x150 cm



GH-1500.2 7' 200x150 cm



GH-2000.1 7' 200x200 cm

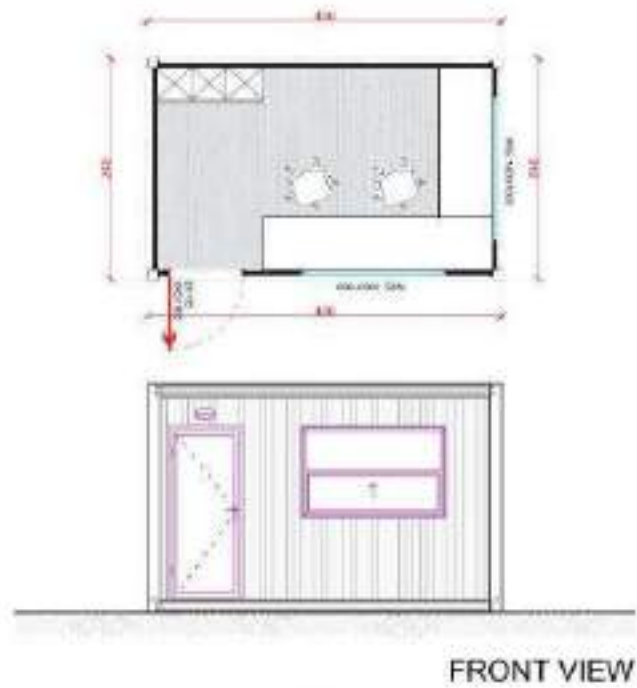


GH-3000.1 10' 300x240 cm



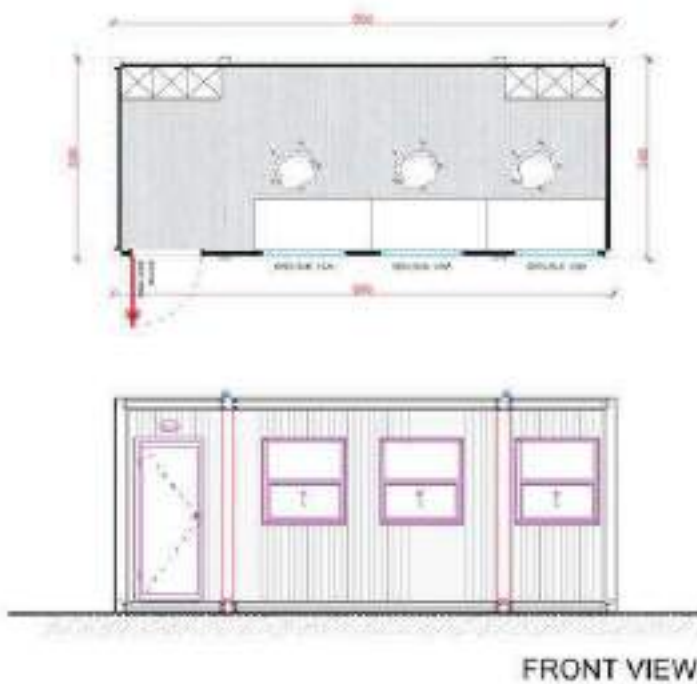
FRONT VIEW

**GH-2400.1** 8' 240x240 cm



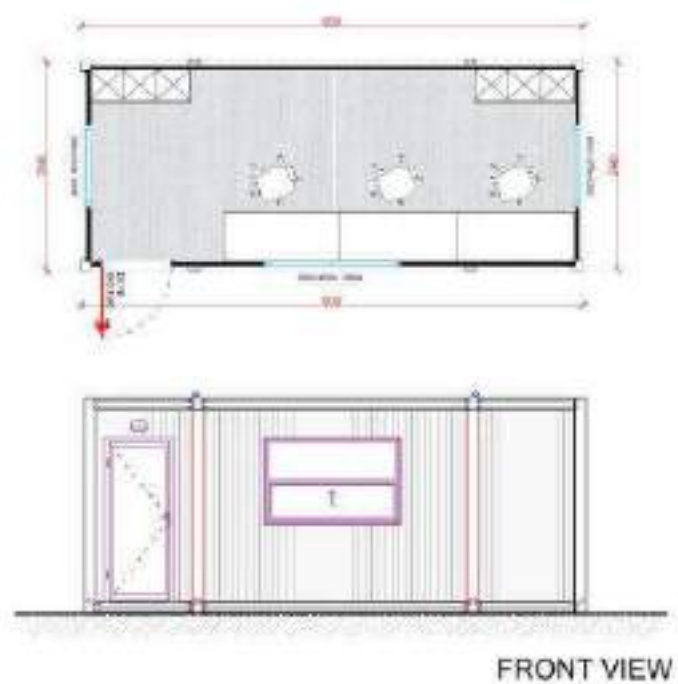
FRONT VIEW

**GH-2400.2** 13' 400x240 cm



FRONT VIEW

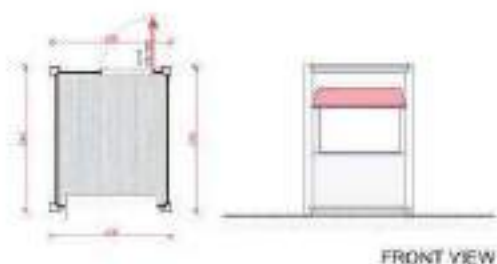
**GH-6000.1** 20' 600x240 cm



FRONT VIEW

**GH-6000.2** 20' 600x240 cm

# KIOSK & SHOP CONTAINERS

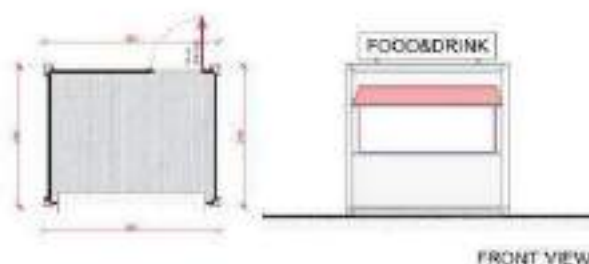


FRONT VIEW

**SP-10**

**7'**

240x200 cm



FRONT VIEW

**SP-11**

**10'**

300x240 cm



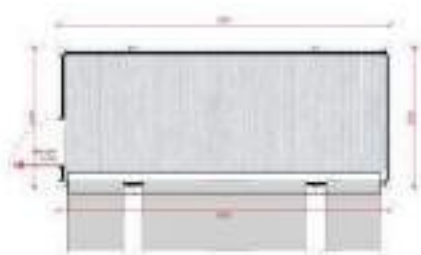
**SP-A6000.1**

**20'**

600x240 cm



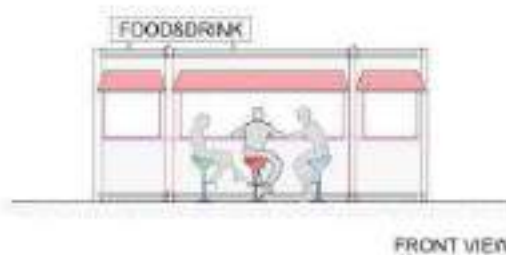
FRONT VIEW



**SP-A6000.2**

**20'**

600x240 cm



FRONT VIEW



**SP-A6000.3**

**20'**

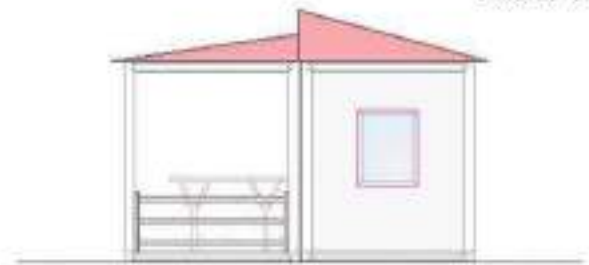
600x240 cm



FRONT VIEW

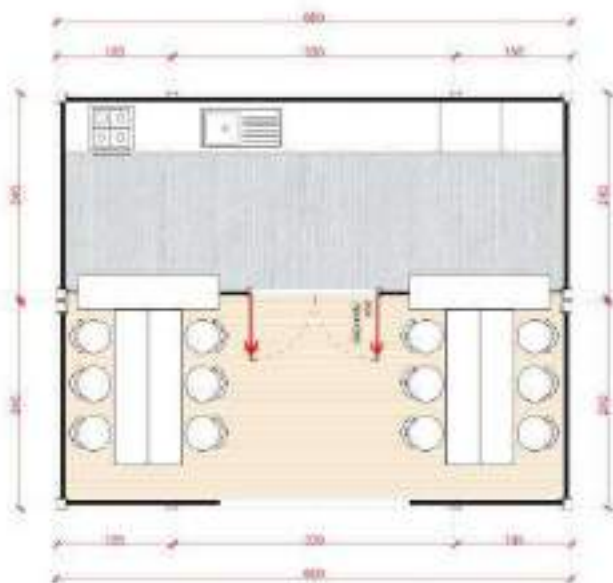


FRONT VIEW

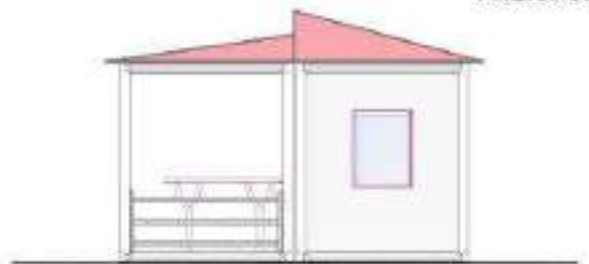


SIDE VIEW

**SP-A6000.4** 2x20' 2/600x240 cm



FRONT VIEW



SIDE VIEW

**SP-A6000.5** 2x20' 2/600x240 cm

# Oversize Container 300 cm width

Office Containers - 700x300 cm



MO-02



MO-03



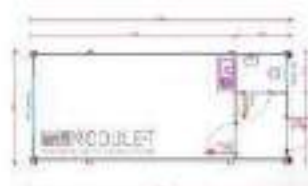
MO-04



MO-05



MO-06



MO-07



MO-08



MO-09



MO-10



MO-11



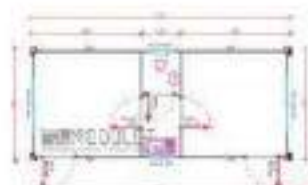
MO-12



MO-13



MO-14



MO-15



MO-16



MO-17



MO-18



MO-19

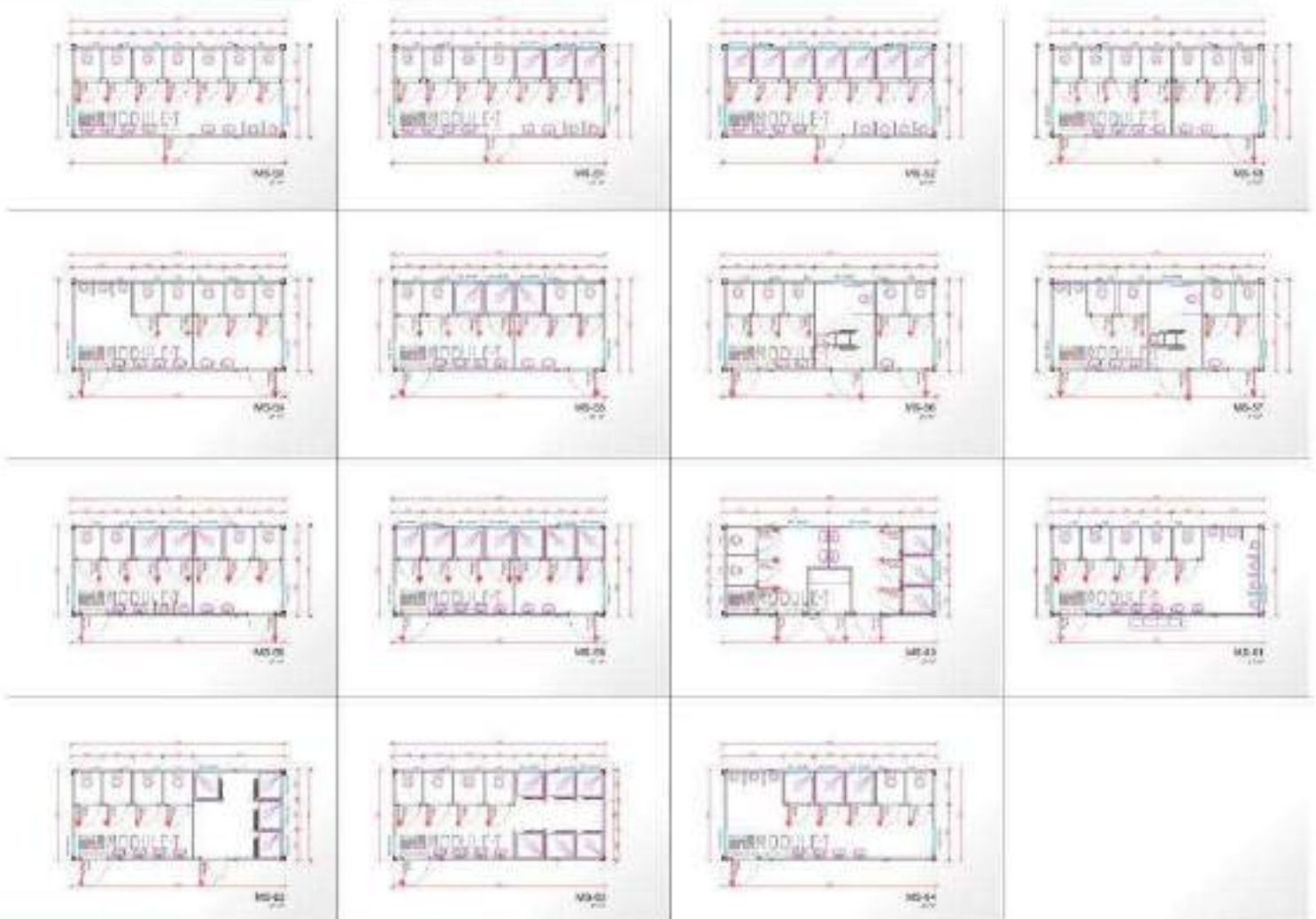


MO-20

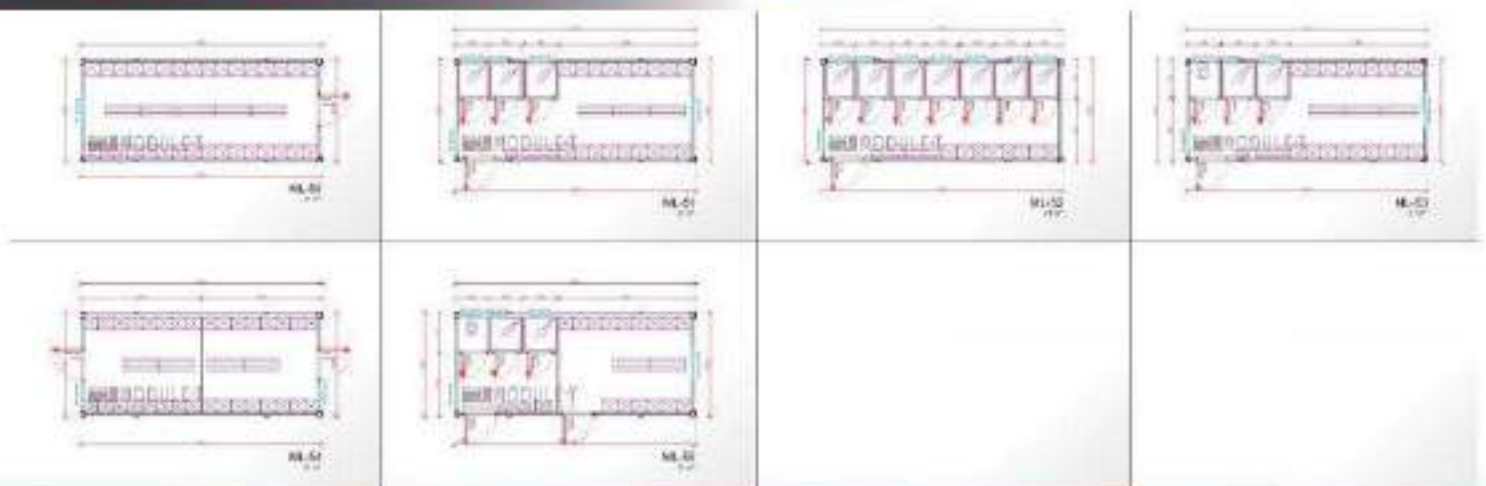


MO-21

**Sanitary Containers - 700x300 cm**



**Locker Containers - 700x300 cm**



**Custom Design  
& Manufacturing**

In response to the customer's request, we can manufacture any other module with different dimensions and technical specifications.

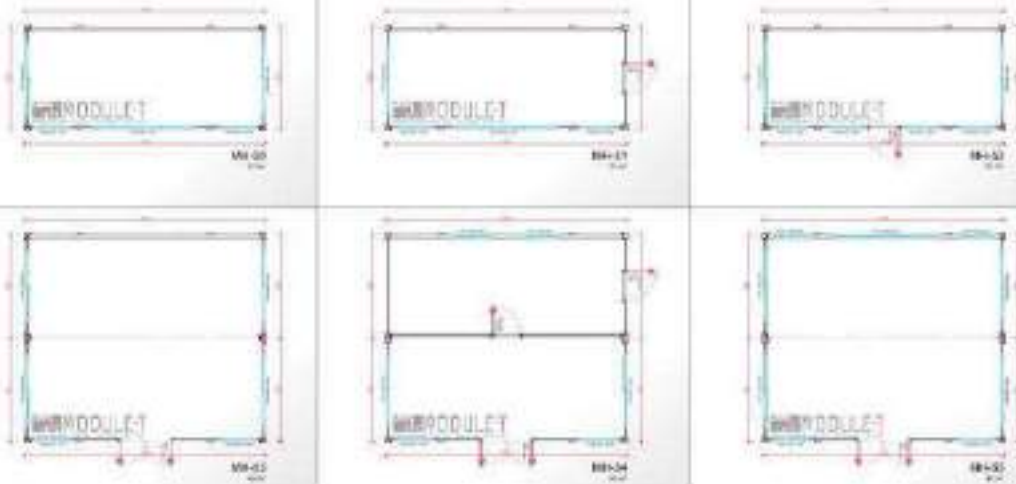
# Oversize Container 300 cm width

Accommodation Containers - 700x300 cm

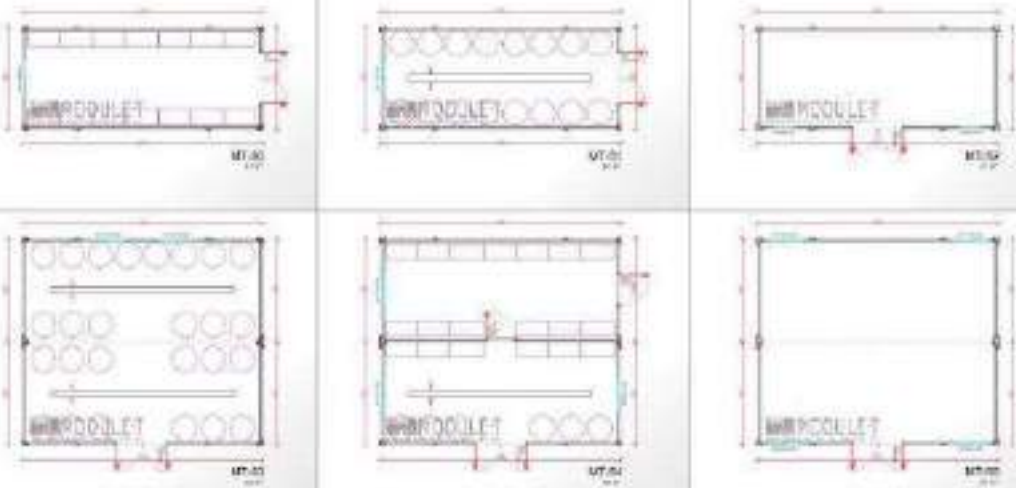




Showroom Containers - 700x300 cm



Storage Containers - 700x300 cm



Infirmiry Containers - 700x300 cm




**Custom Design  
 & Manufacturing**

In response to the customer's request, we can manufacture any other module with different dimensions and technical specifications.



## CONTACT US

 KURIS KULE D:100 GUNAY YANYOL NO: 2 / 77-78,  
KARTAL/ISTANBUL - TURKEY

 +90 216 441 01 77

 EN: +90 538 084 81 60 / FR: +90 543 457 38 11

 [info@module-t.com](mailto:info@module-t.com)

 <https://module-t.com>



 **MODULE-T**  
Modular and Prefabricated Construction Systems