

Frostproof Garden Hydrant



**WATER TAPPING.
THROUGHOUT THE WHOLE YEAR.**

The solution for a frostproof operation of water extraction points

The difficulty of frozen conduits and bursted water faucets is known by all who need to tap water outside throughout the whole year. During the transition period, prior to the beginning of the frost period, the point in time for locking the outside tapping point and emptying the supply line is missed regularly. An operation of the outside tapping point is not possible.

Known are frostproof valves for a horizontal installation on external walls, for which locking takes place in the frost free interior area. It becomes problematic when an external water tapping point, independent from a wall or a locking possibility in the frostproof interior is to be installed or when a horizontal installation is not possible due to the presence of a vertical water supply line outside.

The optimal solution is the new BEULCO garden hydrant. Only a supply line in the frost free area (around 80 cm depth) is necessary for the installation.

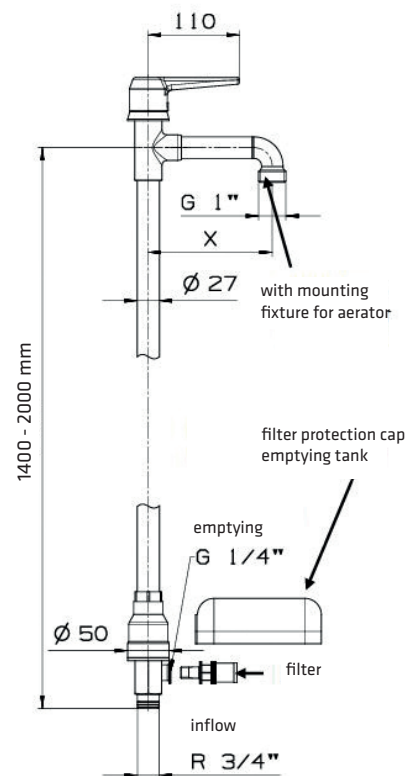
By use of this hydrant, a consistent operation of an outside tapping point throughout the whole year is possible. After each tapping activity, the hydrant is emptied and thus a freezing is impossible. An essential advantage is the maintenance-free ceramic locking in the frostproof area.

An operation at clayey and impermeable lands is also possible because the amount of water which is emptied (around 0,5 litres) runs out into a small gravel bed which is placed in the ground during installation of the hydrant.

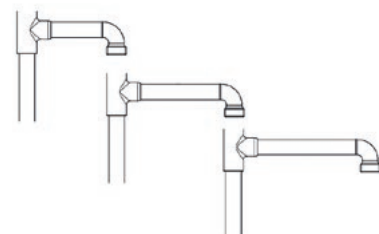
Features and advantages

- Tapping of water is also possible during frost periods because the hydrant is completely emptied when in „closed“ position
- Simple emptying per drainage
- Wear-free operation due to the use of ceramic disks
- Water jet and flow rate are alterable by use of different tap aerators
- Non-return valve in the water inlet
- Free choice of location (a wall etc. is not necessary)
- Hydrants are also available with lockable handle

Technical structure



available outlet lengths:
150 mm (standard), 250 mm, 300 mm



Materials

component	material
handle	zinc die casting chromed
body parts (tapping area)	chromed brass
body pipe	stainless steel
body parts (soil)	brass

Programme Overview



GARDEN HYDRANT - PROFESSIONELL Modell PLPGLS

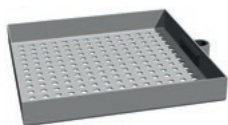
for an operation of outside tapping points all the year, even during the frost period

- with lockable handle
- incl. stabilization wings and basket with cap

height (mm)	outlet	EAN-no. 4027848-
1.400	150	376797
1.400	250	376803
1.400	300	376810
1.600	150	376827
1.600	250	376834
1.600	300	376841
2.000	250	376858
2.000	300	376865

More versions on request.

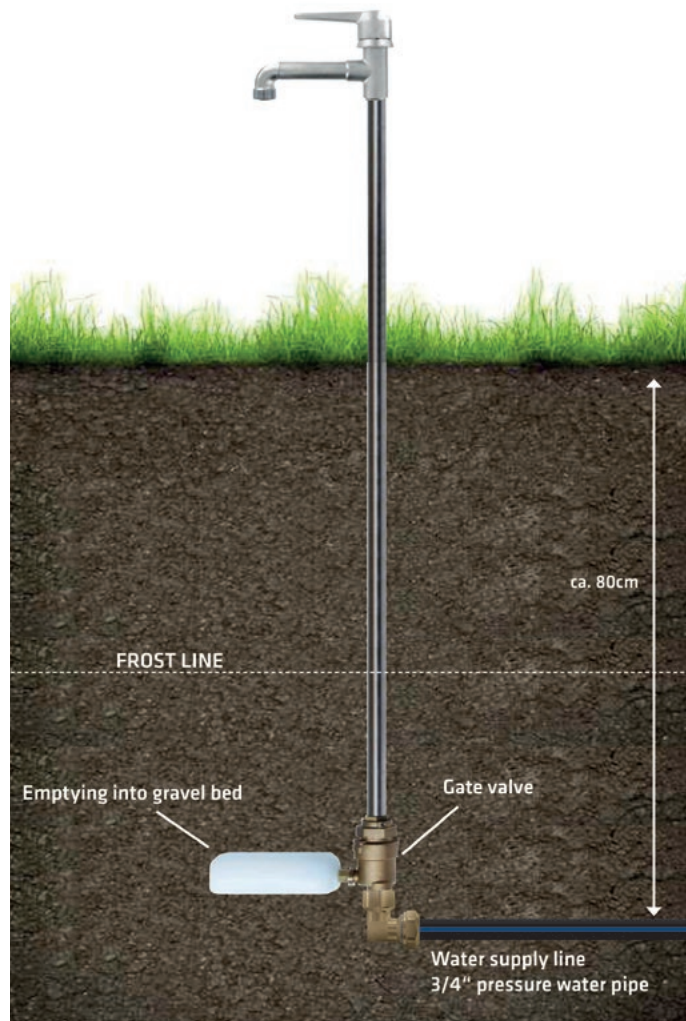
Accessories/Spare parts



components	EAN-no. 4027848-
drip pan	376872
set stabilization wings (spare parts)	376889
basket with cap (spare parts)	376896
self-locking long handle with display ring (open / closed)	376902

Installation and Operation Requirements

- The water supply line needs to be installed in the frost-free area
- The water supply line needs to be installed in the frost-free depth
- Rest water drained from the body (approximately 0,3l - 0,5l) flows into the soil. Depending on soil conditions and frequency of watertapping, a suitable gravel bed needs to be installed for taking the rest water.
- Before the frost period starts, the hydrant must be turned into the „closed“ position in order to drain rest water into the frost free level.
- During frost or danger of frost the hydrant must be turned in the „closed“ position after each tapping activity. This technique makes it possible to tap water during frost periods.
- To make the drainage work, hoses and other connection parts which impede ventilation must be removed.



BEULCO®