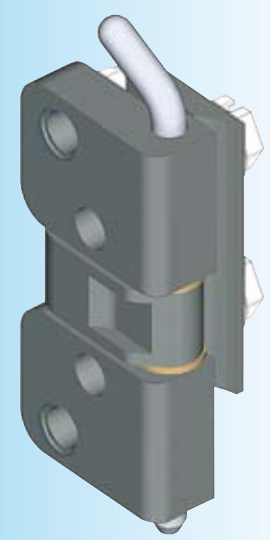
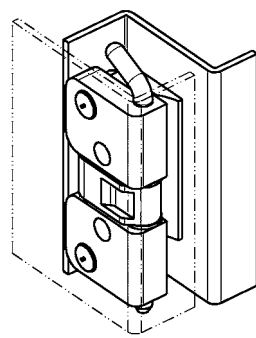


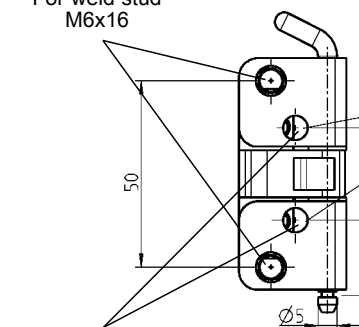
120° hinge

PROGRAM 1110

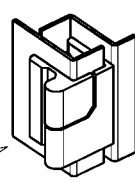
120° hinge for in-line cabinets with single door
for 25 mm door return



For weld stud
M6x16



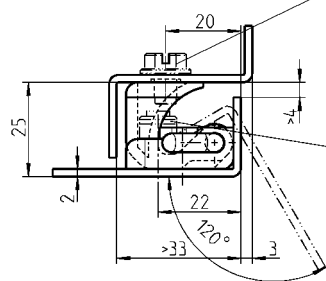
Holes can be used as jig boring
for changing to 180° hinge,
see page 4A-210



* Circlip
DIN 6799-4



* Vibration proof screw
1000-277-03JB (M6x8)



* Safety nut
M6



* For weld stud
M6x16

Available on request chrome plated
and with further RAL-colours

* not included

120° hinge zinc die black powder coated;
pin m.s. zinc plated

Further parts see page
– Fixing material

12E-100

1110-U86