

## Item description/product images

**Description****Material:**

Steel.

**Version:**

Contact faces case-hardened and ground.

**Note:**

The UNI lock mounting clamps can be installed in any position on machine tables, fixtures or workholding equipment (tooling plates, cubes, tombstones etc).

The modular design enables the number of clamps and distance between them to be ideally adjusted to suit the clamping task. The clamps can be supplied with or without rotation lock.

The high clamping forces are generated by the integrated spring package (the unit clamps when depressurised). Compressed air is applied to release the clamp.

The following holding forces are possible with the UNI lock clamping bolt in conjunction with M10, M12 or M16 fastening screws:

- Holding force (M10) 35,000N
- Holding force (M12) 50,000N
- Holding force (M16) 75,000N

**Supplied with:**

- 1x clamping module incl. 6 fastening screws.
- 6x screw protection caps.
- 2x air connection O-rings.
- 1x installation O-ring.

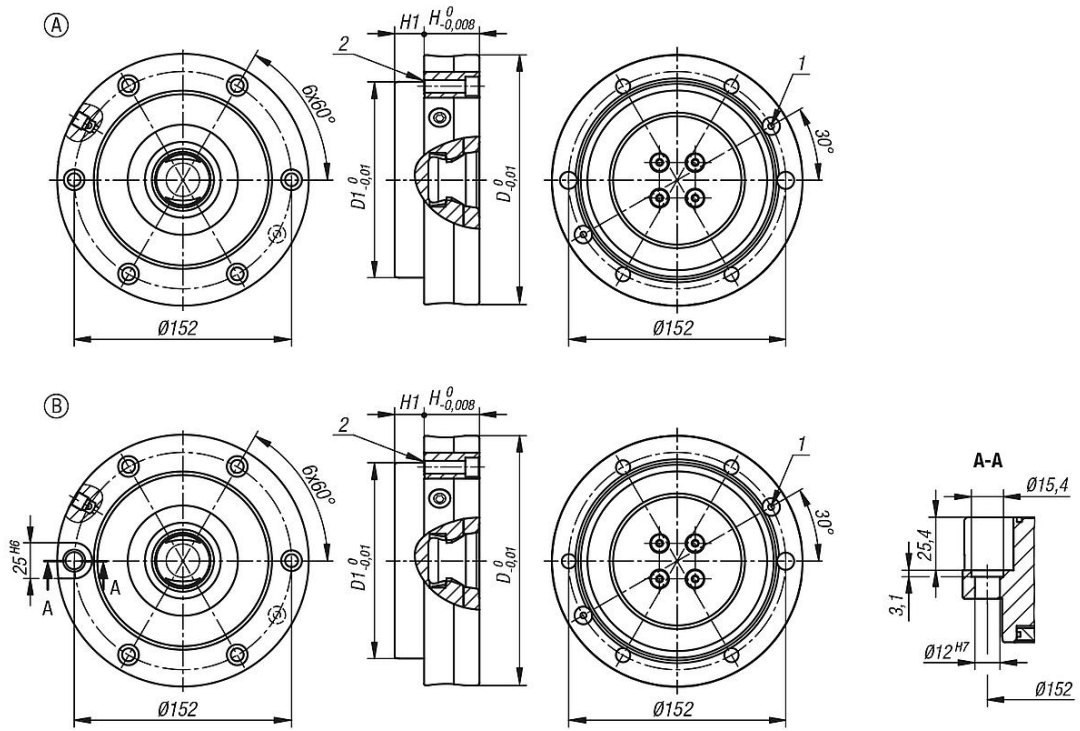
**Technical data:**

- Opening pressure: 6 bar, lubricated air
- Turbo pressure: 6 bar
- Air connection: G 1/8"
- Repeat accuracy  $\leq 0.005$  mm

**Drawing reference:**

- 1) O-ring ( $\emptyset 8 \times 2$ )
- 2) O-ring ( $\emptyset 138$ )

Drawings



Overview of items