

GEDA®
1500 Z/ZP



GEDA®
ORIGINAL



▷ Innovations
▷ Know-how
▷ Up-to-date production technologies

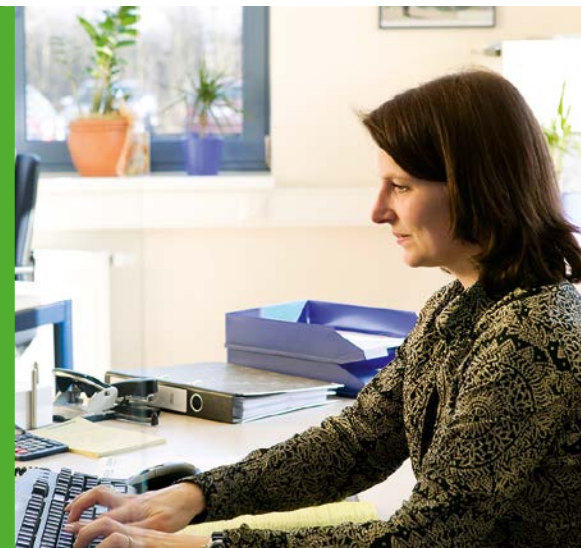


GEDA®
ORIGINAL



GEDA®
UNI-MAST

An ingenious system: you can use the GEDA UNI-MAST for all GEDA rack and pinion hoists from 300 kg to 2000 kg load bearing capacity. **Flexible and economic working with only one mast system!**



GEDA®
World-wide competence



Only put together the 1.5 m mast sections and screw them with captive screws and safety nuts.



Easy loading and transport of all kinds of building material. Special feature: Ideally suited for transporting standard plasterboard panels.



GEDA®
1500 Z/ZP

Your dealer:

GEDA®
ORIGINAL

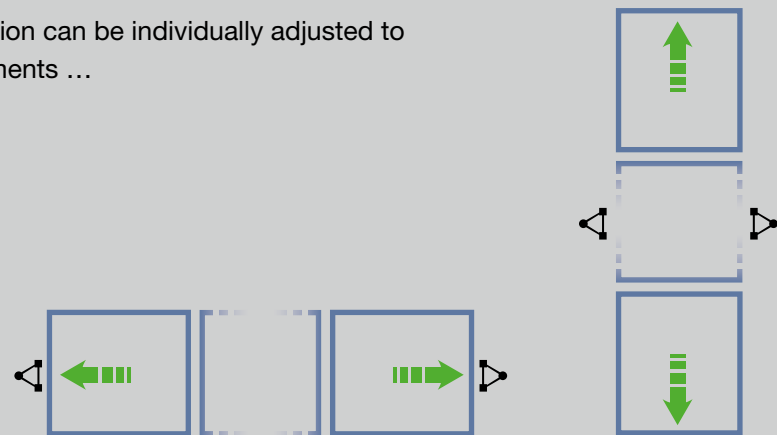
GEDA-Dechentreiter GmbH & Co. KG

Mertinger Straße 60
86663 Asbach-Bäumenheim
Phone +49 (0) 906 9809-0
Fax +49 (0) 906 9809-50
info@geda.de
www.geda.de

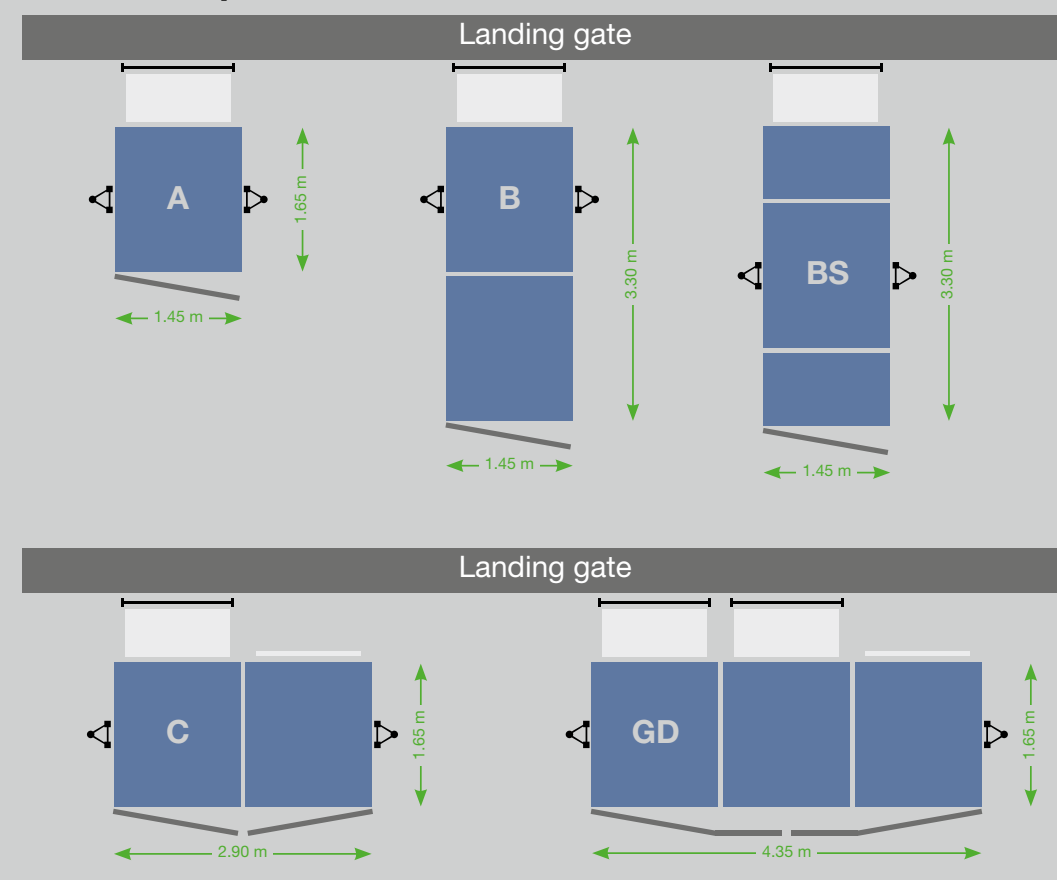
GEDA®
1500 Z/ZP

Transport platform for persons and material

The foot section can be individually adjusted to your requirements ...



Platform examples:



GEDA 1500 Z/ZP

Load capacity	
Persons	max. 2.000 kg
Material	max. 2.000 kg
Lifting height	100 m
Lifting speed	12/24 m/min.
Power connection	2 x 3,0/6,1 kW/400 V/50 Hz

CE **GEDA®**
ORIGINAL



Your powerful partner for heavy loads and efficient work methods.
Numerous different platform versions mean the unit can be employed to optimum capacity on all construction sites.

- 1 Platform version I
- 2 Platform version C
- 3 Platform version BS with roof
- 4 Platform version B

