

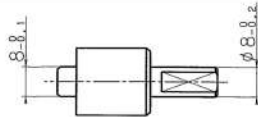
TD112 SERIES



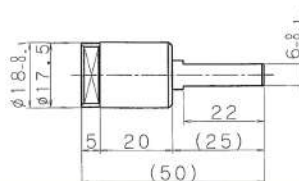
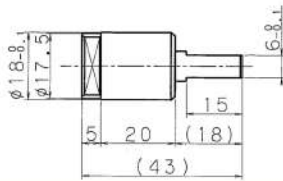
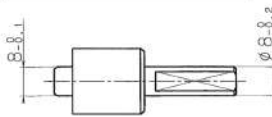
FEATURES

- RoHS compliance
- TD112 series is stronger ver. than TD56 series on durability-wise.
- TD112 DAMPER permits 2.94N·m of maximum torque.
- TD112 series has 2 types of shaft-length.

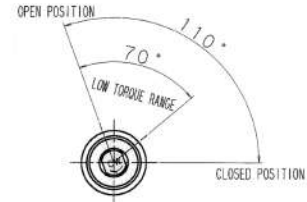
TD112A1/B1 series



TD112A2/B2 series



OPERATION ANGLE(SHAFT OPEN POSITION)



OPERATION ANGLE(SHAFT OPEN POSITION)

Above drawing shows operation angle of TD112 A1/A2 series dampers. Operation angle for TD112B1/B2 series dampers are symmetrical to the vertical line. Shaft position at the time of shipment is closed position.

<Standard Components>

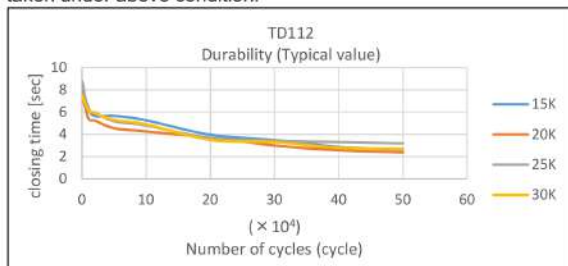
Part name	Material
Housing	ZDC
Shaft	ZDC
Cap	PBT

Code	Part No.	Allowable Torque [N·m]	(Kgf·cm)	Direction
611208	TD112A1-15K	[1.47]	(15)	CW(R)
611209	TD112B1-15K	[1.47]	(15)	CCW(L)
611202	TD112A1-20K	[1.96]	(20)	CW(R)
611203	TD112B1-20K	[1.96]	(20)	CCW(L)
611204	TD112A1-25K	[2.45]	(25)	CW(R)
611205	TD112B1-25K	[2.45]	(25)	CCW(L)
611200	TD112A1-30K	[2.94]	(30)	CW(R)
611201	TD112B1-30K	[2.94]	(30)	CCW(L)

Code	Part No.	Allowable Torque [N·m]	(Kgf·cm)	Direction
611234	TD112A2-20K	[1.96]	(20)	CW(R)
611235	TD112B2-20K	[1.96]	(20)	CCW(L)
611232	TD112A2-25K	[2.45]	(25)	CW(R)
611233	TD112B2-25K	[2.45]	(25)	CCW(L)
611230	TD112A2-30K	[2.94]	(30)	CW(R)
611231	TD112B2-30K	[2.94]	(30)	CCW(L)

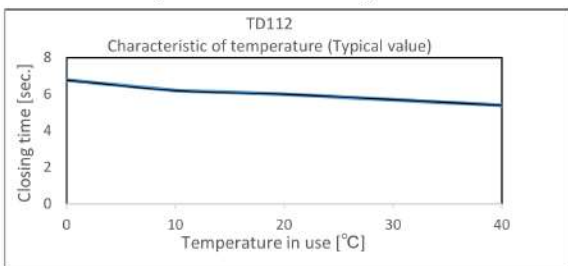
DURABILITY

Each damper is set-up with an applied torque and weight on the shaft of the testing device. Measurements for closing time are taken under above condition.

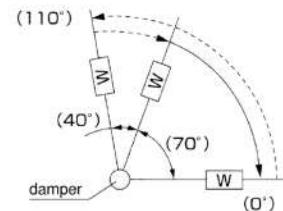


TEMPERATURE CHARACTERISTICS

After the damper is stabilized at room temperature for 1 hour or more. The closing time is measured using a TOK made device.



Operation angle	110°	
Durability	50,000 cycles	
Closing time	Applied torque	Initial value
	1.47N·m(15kgf·cm)	3~10 (sec)
	1.96N·m(20kgf·cm)	3~10 (sec)
	2.45N·m(25kgf·cm)	3~10 (sec)
	2.94N·m(30kgf·cm)	3~10 (sec)



TEST CONDITION

- ① Setting-up time : 20 sec/cycle
- ② Applied torque :
 - 1.0N·m(10kgf·cm)
 - 1.5N·m(15kgf·cm)
 - 2.0N·m(20kgf·cm)
 - 2.5N·m(25kgf·cm)
 - 3.0N·m(30kgf·cm)
- ③ Temperature : 23°C±2°C
- ④ Angle for measuring the closing time : 70° → 0°
- ⑤ Radial force : nothing
- ⑥ Closing time after durability test : 1 sec. or more

TOK, Inc.

HEAD OFFICE, TOKYO, JAPAN - TEL : 81-3-3969-1534 FAX : 81-3-3969-9354
EMAIL : en-contact@tok-inc.com

Product specification are subject to change without prior notice.

Before assembly or use of any bearing, please read "Caution for Use"