



Lightweight and quick to deploy, the inflatable Single Decontamination Unit from MFC International allows for rapid response in a decontamination scenario. Fully inflatable, the shower can be set up in a matter of minutes, and will stay standing without continuous inflation.

With no mechanical framework the shelters are lightweight to transport and compact to store. Showers can be used on hard or soft standing, and guy ropes are provided for securing in position during inclement weather.

Optional raised floor panels prevent contact with contaminated shower wash-off, which is collected in a chemically resistant sump. Sleeves for pumped extraction of contaminated water are included as standard.

Single Decontamination Showers come with a viewing window and optional chemically resistant PVC gloves to allow assisted decontamination by a third party stood outside of the unit.

## FEATURES

- Lightweight and easily portable
- Will be set up within a matter of minutes and will stay standing without continuous inflation
- Raised floor panels prevent contact with contaminated shower wash off which is collected in a PVC chemically resistant sump
- Sleeves for pumped extraction of contaminated water are included as standard
- Chemical resistant PVC gloves are added onto the sides of the shower to allow a second person to help wash down the contaminated person
- Can be used on hard or soft standing and guy ropes are provided for securing in position
- Minimal training, servicing and maintenance costs
- Available in Yellow PU material or Orange PVC material

## USED FOR

- Decontamination scenarios

## SUPPLIED WITH

- Valise
- Repair kit
- Inflation hose - 1m (for use with 8 bar regulator)

## OPTIONS & ACCESSORIES

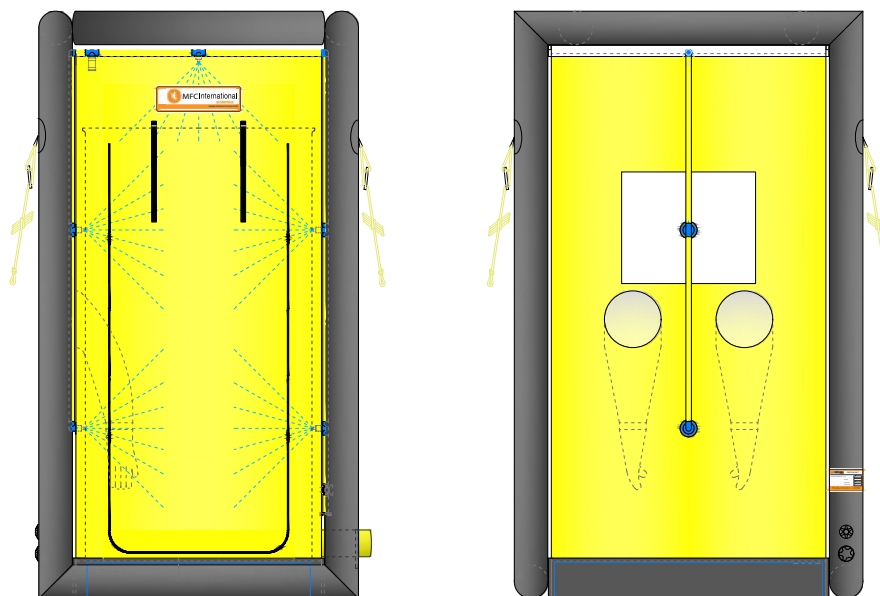
- Customer branding
- Electric inflater
- 8 bar regulator

## TECHNICAL DATA

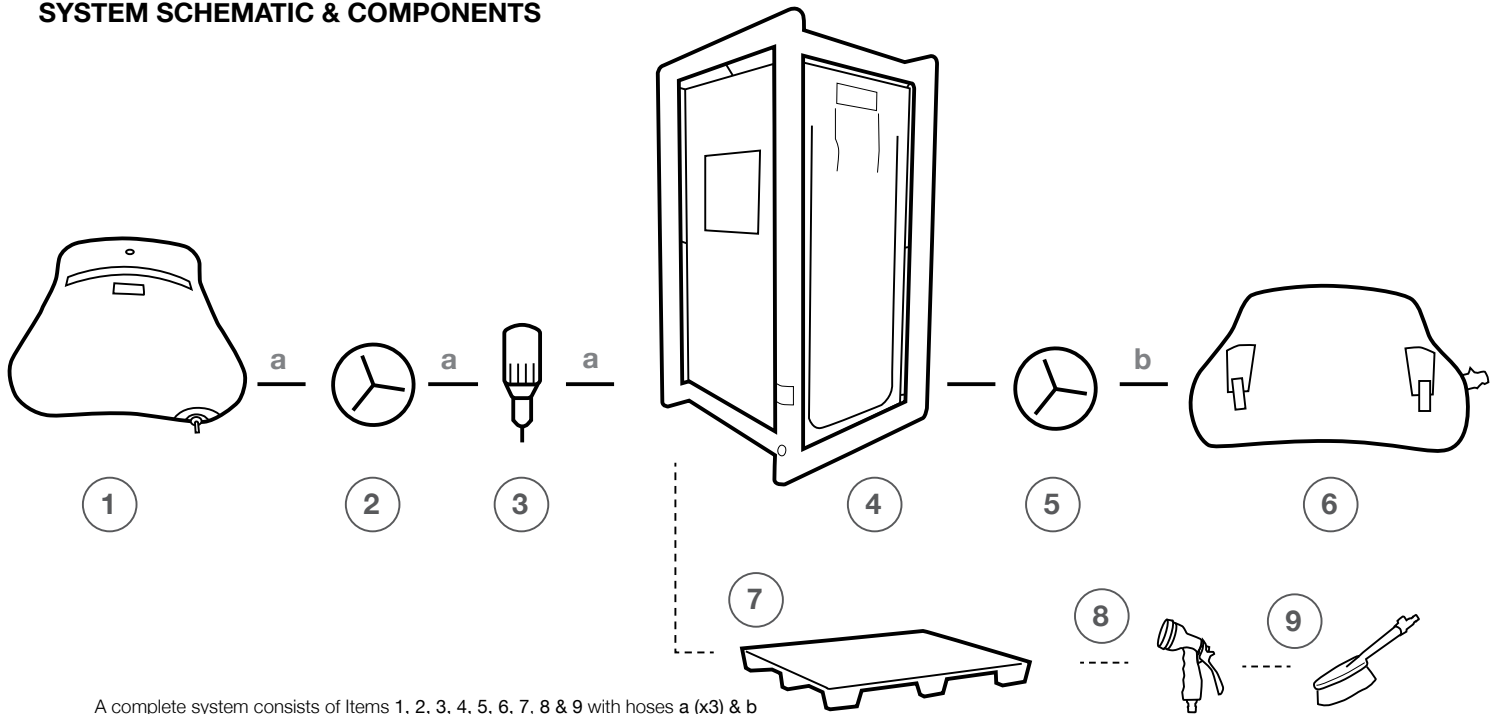
	Single - Without Gloves	Single - With Gloves
Product Code (Yellow PU)	DSW0022	DSW0022/001
Product Code (Orange PVC)	DSW0022/003	DSW0022/004
Length (cm)	143	156
Int. Length (cm)	110	123
Width (cm)	156	143
Int. Width (cm)	123	110
Height (cm)	250	250
Int. Height (cm)	215	215
Working Pressure (bar)	0.55	0.55
No. of chambers	1	1
Air Requirements (ltr)	400	400
Max. Water Inlet Pressure (bar)	3	3
Recommended pump flow-capacity (ltrs)	10 ltr/min per nozzle	10 ltr/min per nozzle
Number of Shower Nozzles	5	5
Number of Shower Hose Connectors	1	1
Number of Shower Brush Connectors	1	1
Number of Tubing Sleeves,	2	2
Pack size (cm)	70 x 45 x 30	70 x 45 x 30
Weight (kg)	25	25



## DETAIL DRAWING



## SYSTEM SCHEMATIC & COMPONENTS



A complete system consists of Items 1, 2, 3, 4, 5, 6, 7, 8 & 9 with hoses a (x3) & b  
 A system for an existing water supply consists of Items 4, 5, 6, 7, 8 & 9 with hose d

1



**Clean Water Pillow Tank (1000ltr)**  
 (x1 WS0028)  
 - see website for other sizes

2



**Inlet Water Pump**  
 (x1 DSA002)

3



**Dosatron with Trolley**  
 (x1 DSA005)

4



**Single Decon Shower**  
 (Yellow shower DSW022)  
 (Yellow shower with gloves DSW022-002)  
 (Orange shower DSW022-003)  
 (Orange shower with gloves DSW022-004)

5



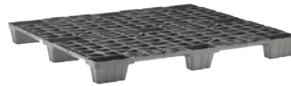
**Submersible Pump**  
 in Single Decon  
 (x1 DSA004)

6



**Waste Water Pillow Tank (1000ltr)**  
 (x1 WS0017)  
 - see website for other sizes

7



**Pallet for Single Decon**  
 (x1 DSA007)

8



**Spray Gun**  
 (DSA008)

9



**Hand Brush & Hose**  
 (180035)

a

**Green Hose**  
 Pillow Tank to Water Pump  
 (x3 630004)

b

**Clear Hose**  
 Sub. Pump to Pillow Tank  
 (x1 630006)

**N.B.** CAMLOCK couplings used on components and hoses as standard, other couplings are available on request.