



# SOLAR LIGHT TUBE

## Heavy Floor Models

*Passable flat domes*

They are ecological systems, where natural light is captured and directed through internally coated tube by highly reflective material, which minimizes the dispersion of the rays and allows a supply of light at considerable distances, without heat or cold transfer.

Made with robust materials, are resistant to the most severe weather conditions.

Studies indicate an average of about 80% of working hours indoors can be performed with natural light, thus contributing directly to reducing energy consumption and consequently to improve the energy efficiency of buildings.

**Factory:** Travessa da Zona Industrial - 1, nº 95 Rossio, 3730-601 Vila Cova do Perrinho, Vale de Cambra, PORTUGAL.

**Tel.** (+351) 256 472 888  
**Fax:** (+351) 256 425 794  
**Email:** comercial@chatron.pt  
**Url:** www.chatron.pt

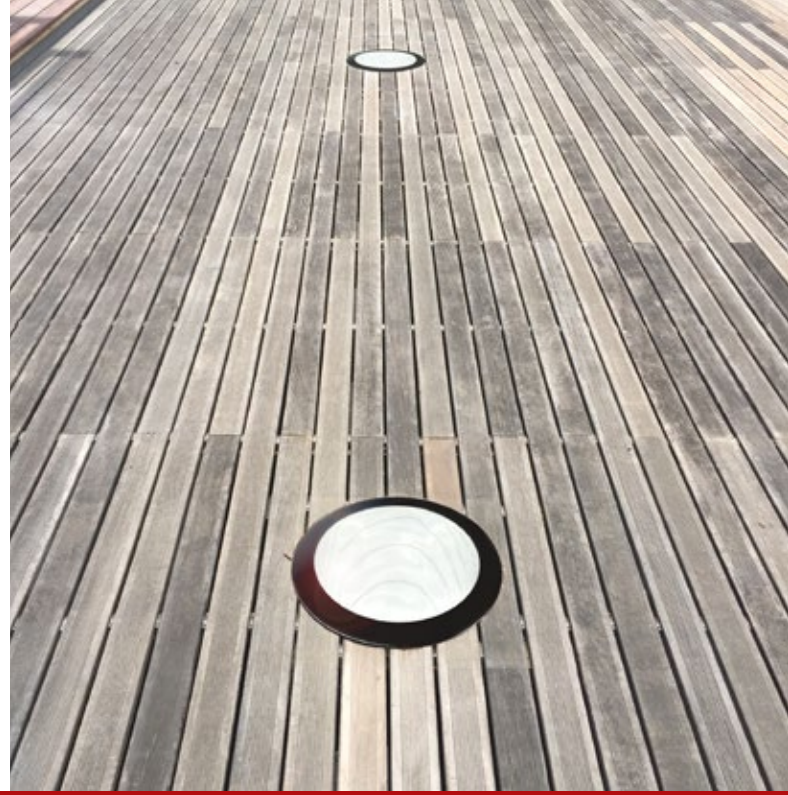
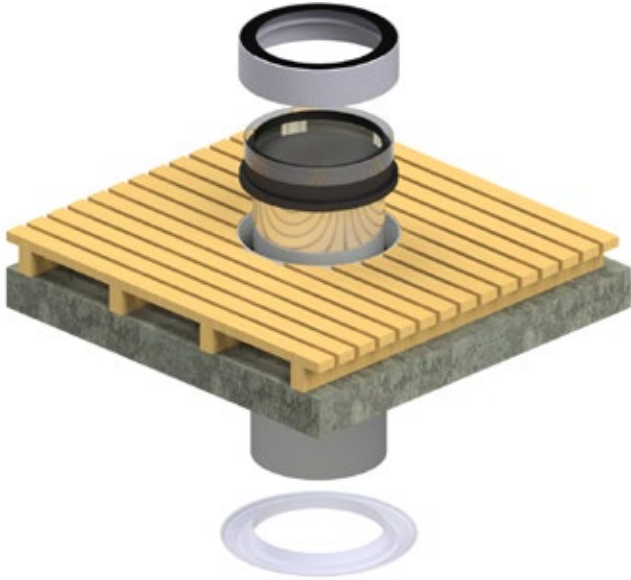
**The Heavy Floor models allow a perfect installation of the Chatron Solar Tube on floors, getting the diffuser built-in without any kind of overhang.**



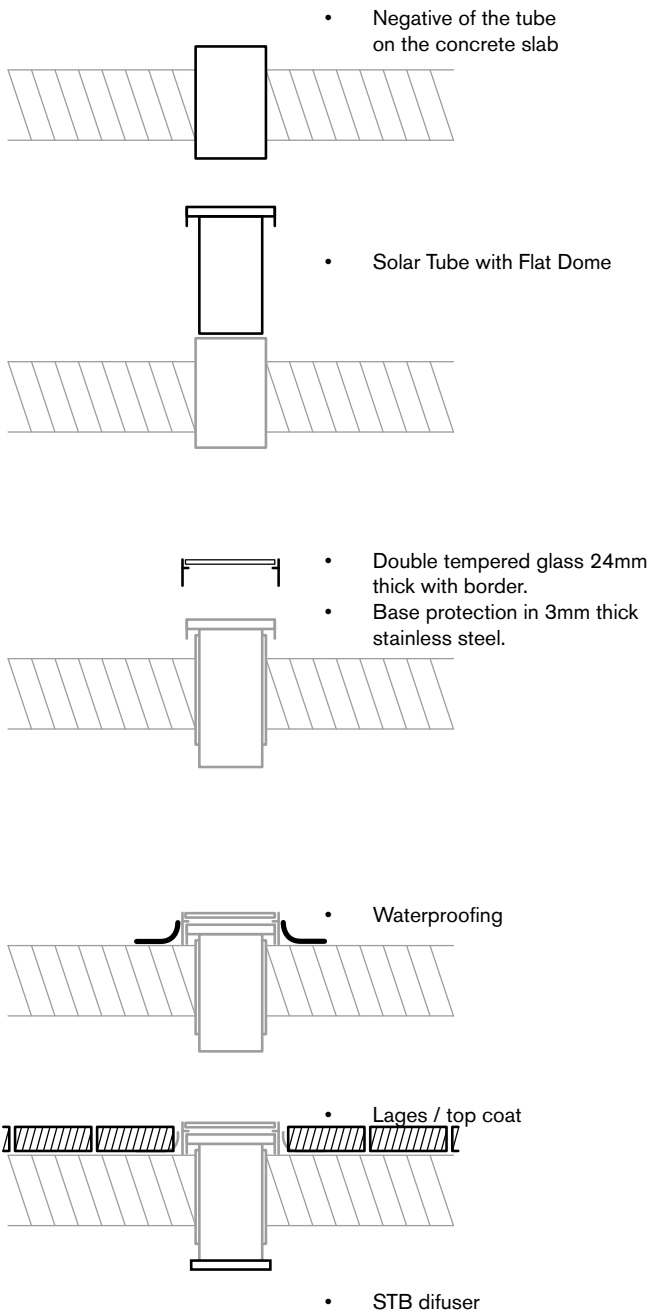
### Heavy Floor Model for TS 300.

They can also be produced in rectangular formats and with other dimensions. Structural accessory of walk to be cast or installed above the waterproofing.

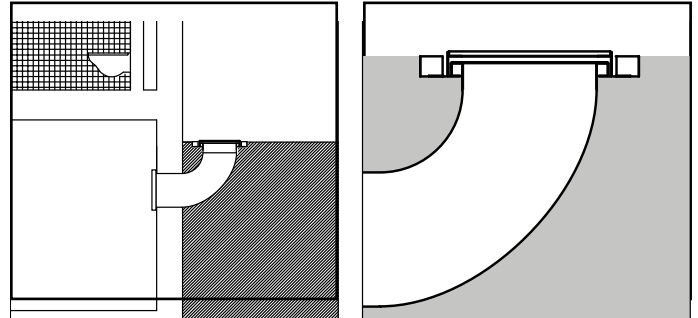
**Distributor:**



### Vertical Installation



### Installation with 90° curve



Available Models	TS-HF-300	TS-HF-530	TS-HF-750
Outside diameter	365 mm	595 mm	815 mm

