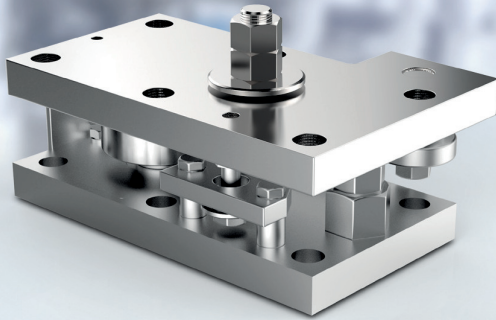


Load cell PR 6212

for maximum corrosion resistance



ⓘ Load cell PR 6212 benefits

- Maximum corrosion resistance
- High-temperature version available for up to 180 °C
- Easy and failure-free installation using the mounting kit PR 6012

ⓘ Mounting kit PR 6012 benefits

- Integrated jack-up and dummy function
- Low installation height

The load cell PR 6212 is a state-of-the-art product. This corrosion-resistant load cell has a compact design and also features high heat resistance. Its long product lifetime minimises downtime and ensures safer and more reliable processes in the chemical and steel industry.

Corrosion resistance and precision for demanding applications

- ⓘ Stainless steel 1.4418, unique in weighing technology, ensures **maximum corrosion resistance**. The PR 6212 is **also available with protective coating** for use in extremely aggressive environments.
- ⓘ The perfectly coordinated combination of the load cell PR 6212 and mounting kit PR 6012 meets all precision and handling requirements. The **inverted installation** provides additional corrosion protection for the load cell and is **simple and failure-free**.
- ⓘ The compact design **ensures a low system height** and allows for easy retrofitting of weighing technology.